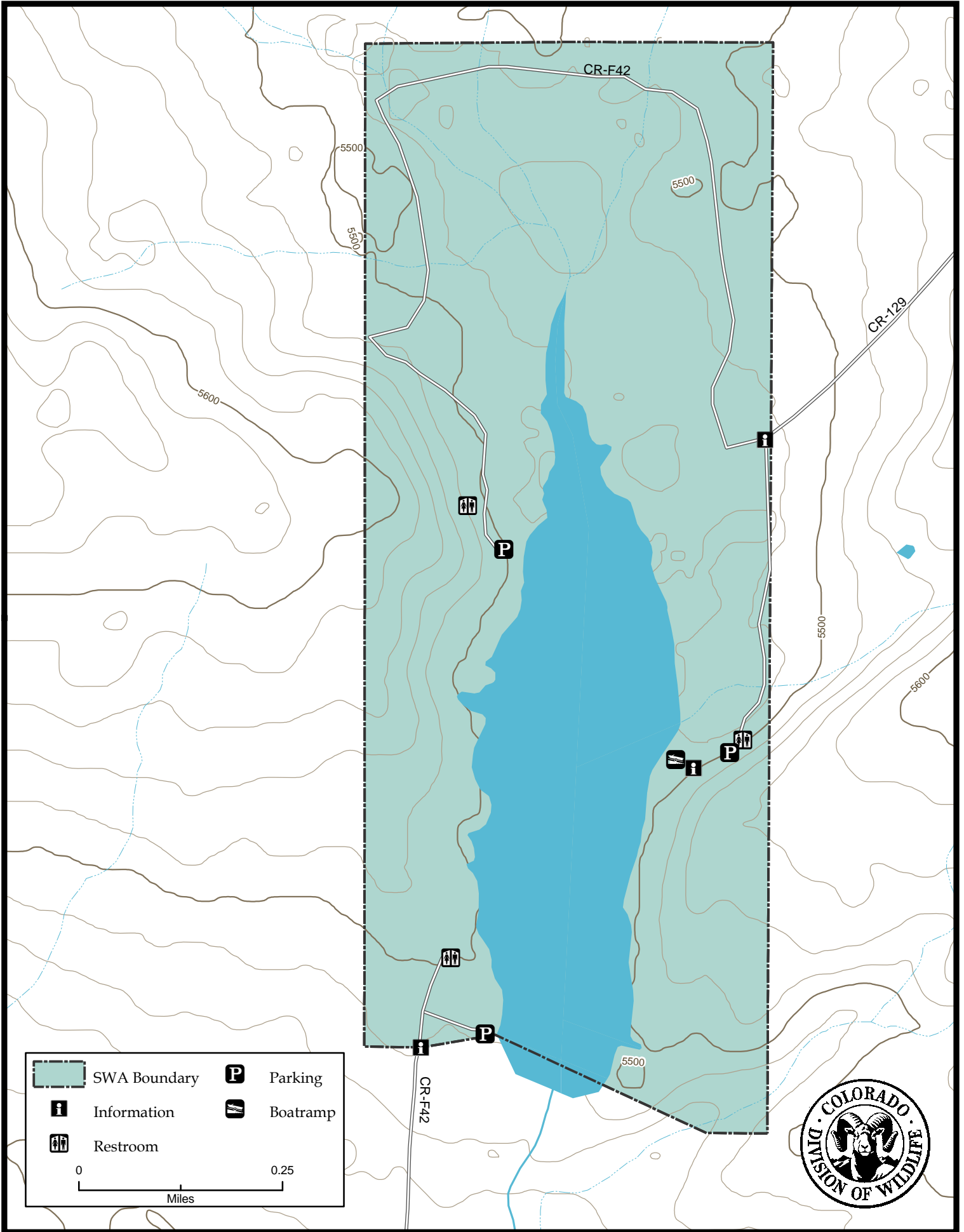
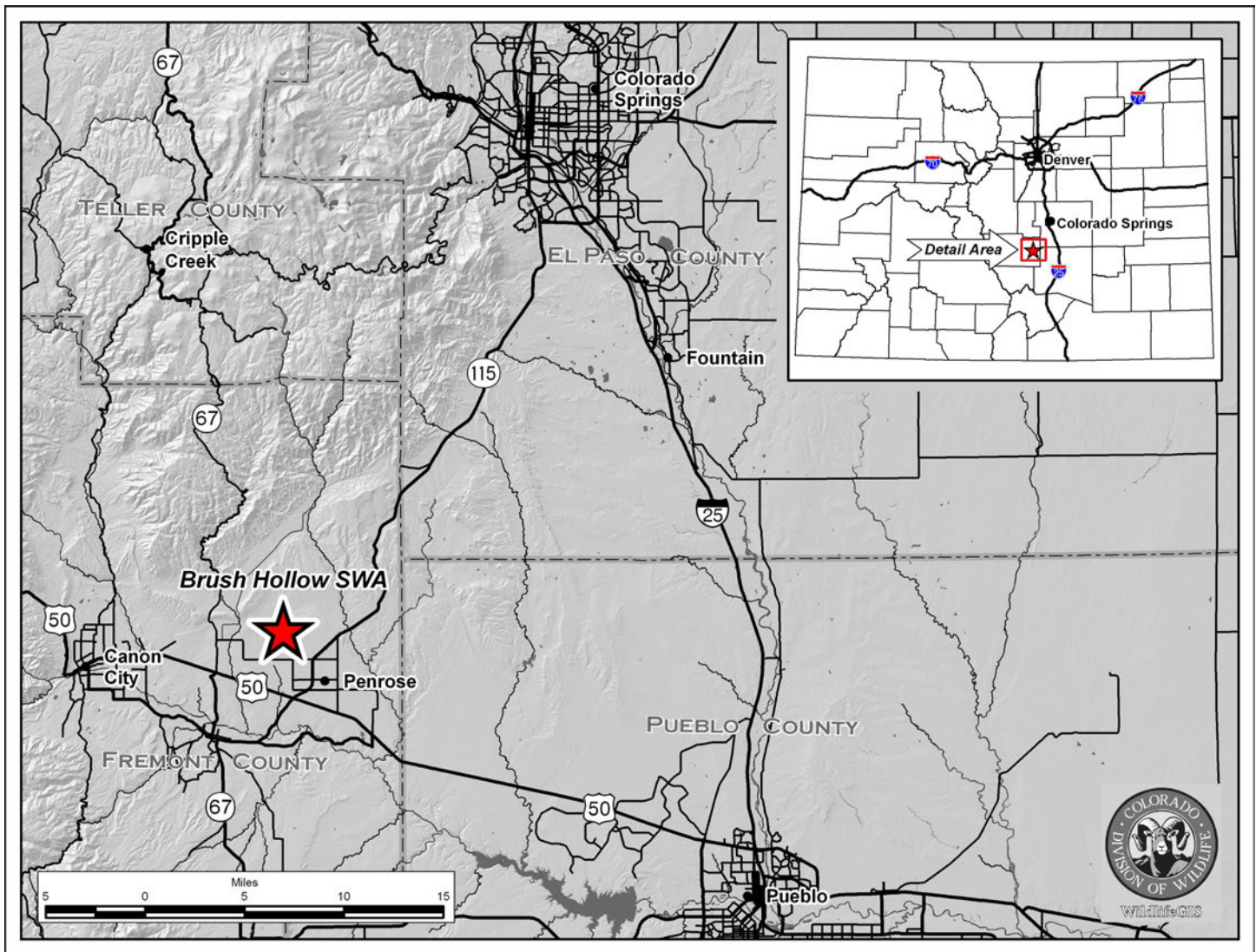


Brush Hollow State Wildlife Area





Brush Hollow SWA - Fremont County

From US 50 at Penrose, go 2 miles north on Highway 115 to County Road 123, then 1 3/4 miles west (left) to the access road on the right, and then go 2 miles north (right) to the property.

Area Offers:

Fishing: Coldwater Lake
 Recreation: Wildlife Viewing
 Facilities: Rest Rooms, Boat Ramp

Restrictions:

- A. Boating is prohibited in a manner that creates a white water wake.
- B. Camping is prohibited.
- C. Fires are prohibited.
- D. Minimum size for smallmouth, largemouth and spotted bass is **15** inches long.

In addition to or in place of those restrictions listed in regulation #900 the above listed provisions or restrictions apply (see Chapter 9, <http://wildlife.state.co.us/RulesRegs/Regulations/>).

This product is produced and distributed by: Colorado Division of Wildlife - GIS Group, 317 W. Prospect, Fort Collins, CO 80526. Information depicted hereon is for reference purposes only and is compiled from best available sources. Mapped property boundaries may or may not reflect actual legal holdings. Please observe and respect all marked boundaries and signs on the property. Regulations are subject to change - posted regulations at the individual SWA take precedence over any regulations referred to here. For further information, please see regulations brochures available at CDOW offices or wildlife.state.co.us.