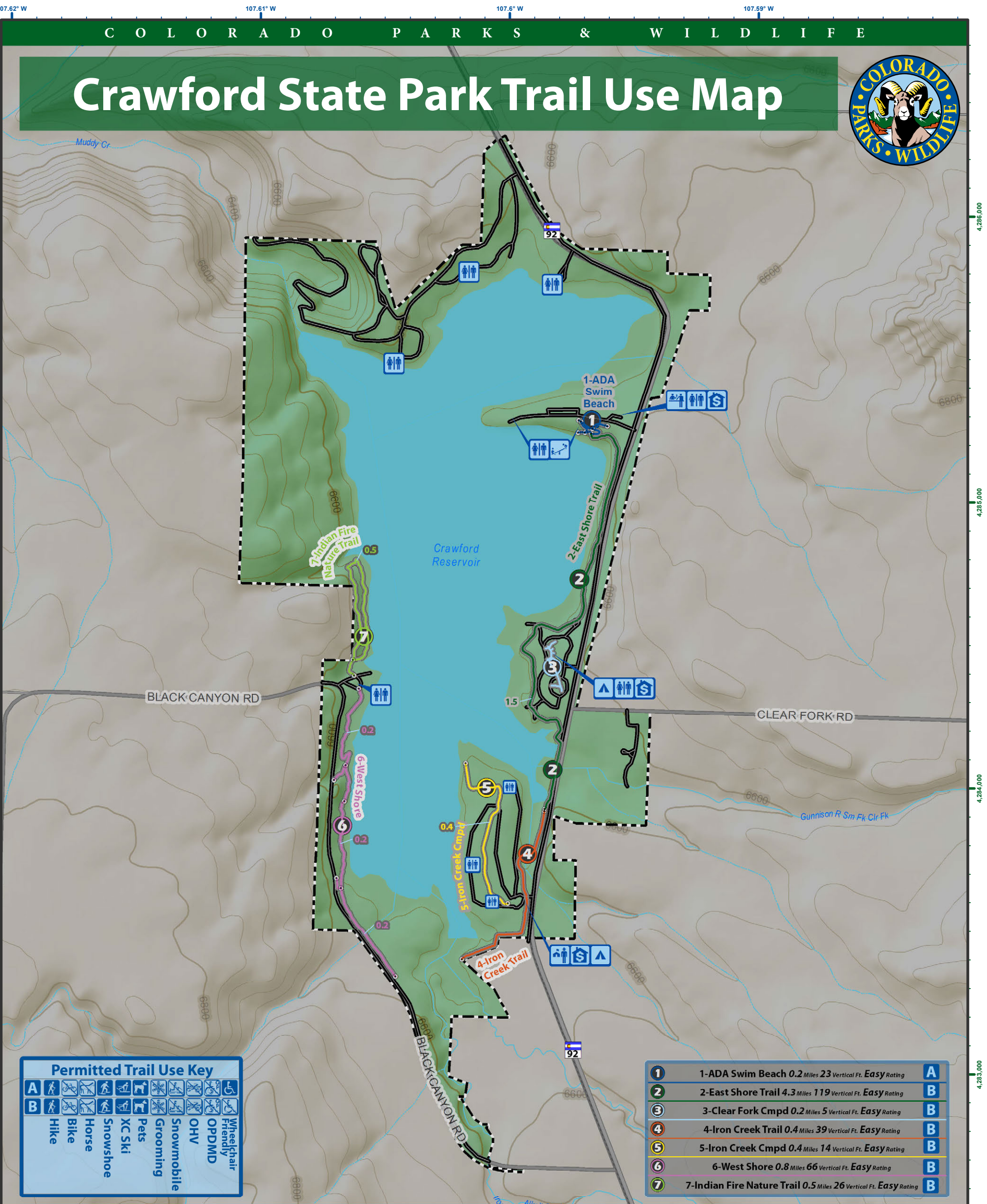


# Crawford State Park Trail Use Map



Permitted Trail Use Key	
<b>A</b>	Wheelchair Friendly
<b>B</b>	OPDMD
	Hike
	Bike
	Horse
	Snowshoe
	XC Ski
	Pets
	Grooming
	Snowmobile
	OHV

<b>1</b>	1-ADA Swim Beach 0.2 Miles 23 Vertical Ft. Easy Rating	<b>A</b>
<b>2</b>	2-East Shore Trail 4.3 Miles 119 Vertical Ft. Easy Rating	<b>B</b>
<b>3</b>	3-Clear Fork Cmpd 0.2 Miles 5 Vertical Ft. Easy Rating	<b>B</b>
<b>4</b>	4-Iron Creek Trail 0.4 Miles 39 Vertical Ft. Easy Rating	<b>B</b>
<b>5</b>	5-Iron Creek Cmpd 0.4 Miles 14 Vertical Ft. Easy Rating	<b>B</b>
<b>6</b>	6-West Shore 0.8 Miles 66 Vertical Ft. Easy Rating	<b>B</b>
<b>7</b>	7-Indian Fire Nature Trail 0.5 Miles 26 Vertical Ft. Easy Rating	<b>B</b>

**CPW PocketTrail Map # 21 of 60**

Crawford Trail Use Map: CRA\_1of1 showing trails within the Entire Park

Last Updated: 9/9/2013 9:33:19 AM  
Created by the Colorado State Trails Program  
Email revisions to: Eric.Drummond@state.co.us

**Infrastructure Legend**

	Visitor Center (1)		Trail Intersections
	Entrance station (1)		CPW Public Roads
	Fee Station (3)		CDOT Highways
	Restroom (13)		CDOT Major Roads
	Campground (2)		CDOT Local Roads
	Drinking Water (0)		CPW Service Roads
	Historic Site (0)		Rivers   Diversions
	Playground (1)		CPW Parking Lots
	Parking (0)		CPW Boundaries
	Scenic Overlook (0)		
	Wildlife Watching (0)		

**Cartographic Information**

0 0.1 0.2 0.3 0.4 0.5  
Miles

Scale: 1:13,000

Declination as of January 2013:  
9.8901° changing by -0.1274° per year

Coordinate System: NAD 1983 UTM Zone 13N

Department of Natural Resources Disclaimer:  
The Colorado Department of Natural Resources ("DNR") is not responsible and shall not be liable to the user for damages of any kind arising out of the use of data or information provided by DNR, including the installation of the data or information, its use, or the results from its use. ANY DATA OR INFORMATION PROVIDED BY THE DNR IS PROVIDED "AS IS" WITHOUT WARRANTY OF ANY KIND, EITHER EXPRESS OR IMPLIED, INCLUDING, BUT NOT LIMITED TO, THE IMPLIED WARRANTIES OF MERCHANTABILITY AND FITNESS FOR A PARTICULAR PURPOSE. Data or information provided by DNR shall be used and relied upon only at the user's sole risk, and the user agrees to indemnify and hold harmless the DNR, its officials, officers and employees from any liability arising out of the use of the data/information provided.

[http://bit.ly/CRA\\_1of1](http://bit.ly/CRA_1of1)

Download Map as .pdf