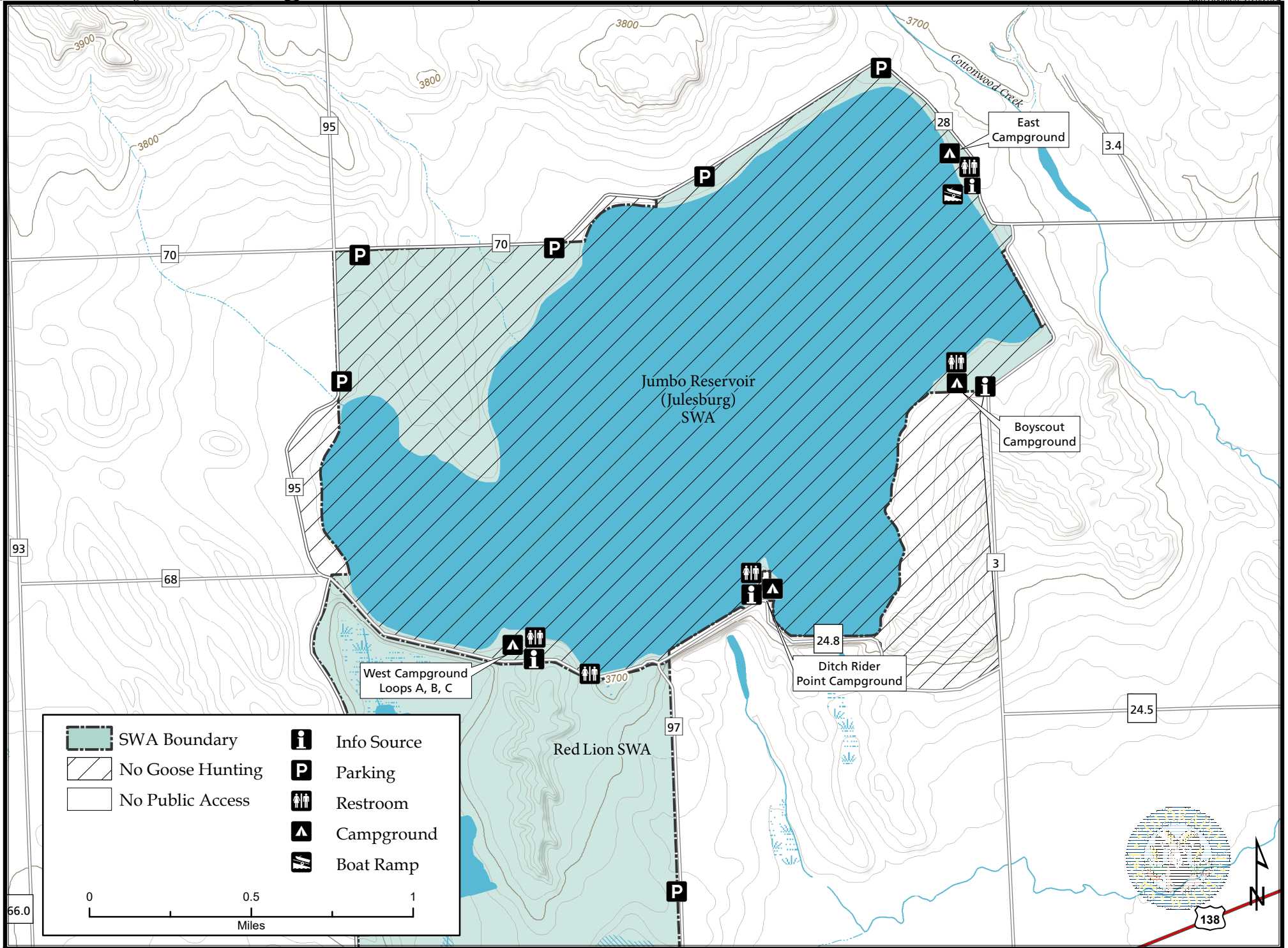


# Jumbo (Julesburg Reservoir) State Wildlife Area

Map Updated: 2/20/2024





### Jumbo (Julesburg Reservoir) State Wildlife Area – Logan & Sedgwick Counties

From Interstate 76 at the Red Lion exit (Exit 155), go 3 miles north (left) to Highway 138, then 1 mile northeast (right) to County Road 95, then 2 miles north (left) to the reservoir.

#### Wildlife Area Offers:

Hunting: Rabbit, Pheasant, Waterfowl, Dove (GMU 90)

Fishing: Warmwater

Recreation: Wildlife viewing, Camping

#### Regulations:

In addition to or in place of those restrictions listed in regulation #900 the below listed provisions apply (see Chapter 9, <https://cpw.state.co.us/aboutus/Pages/Regulations.aspx>)

- A. Property is limited to 250 vehicles.
- B. Hunting is prohibited from the frozen surface of the lake.
- C. Discharge of firearms or bows is prohibited, except while hunting.
- D. Launching and use of all vessels is allowed.
- E. Waterskiing is prohibited from 7:00 p.m. – 10:00 a.m., Friday through Monday of Memorial Day weekend.
- F. Vessels are prohibited within 50 feet of outlet structure.

- G. Launching of motorized vessels or sailboats is prohibited if the Aquatic Nuisance Species (ANS) inspection station is closed.
- H. Hand-launched and hand-powered vessels shall only be used for fishing, to setup/pick-up decoys or retrieve downed waterfowl after the ANS inspection station closes for the year or until the reservoir is frozen.
- I. Camping is allowed in designated areas in designated number sites.
- J. One camping unit is allowed per campsite. 35 k. Quiet hours will be enforced from 10:00 p.m. – 6:00 a.m. Legal hunting activities are except from quiet hours. l. Fires are allowed within a containment structure in designated camping areas. m. Dogs are allowed but must be kept under control on a physical leash by the handler at all times except as authorized in #900(C) (15).

#### More Information:

CPW Office (Brush): (970) 842–6300

CPW Website: <http://cpw.state.co.us>