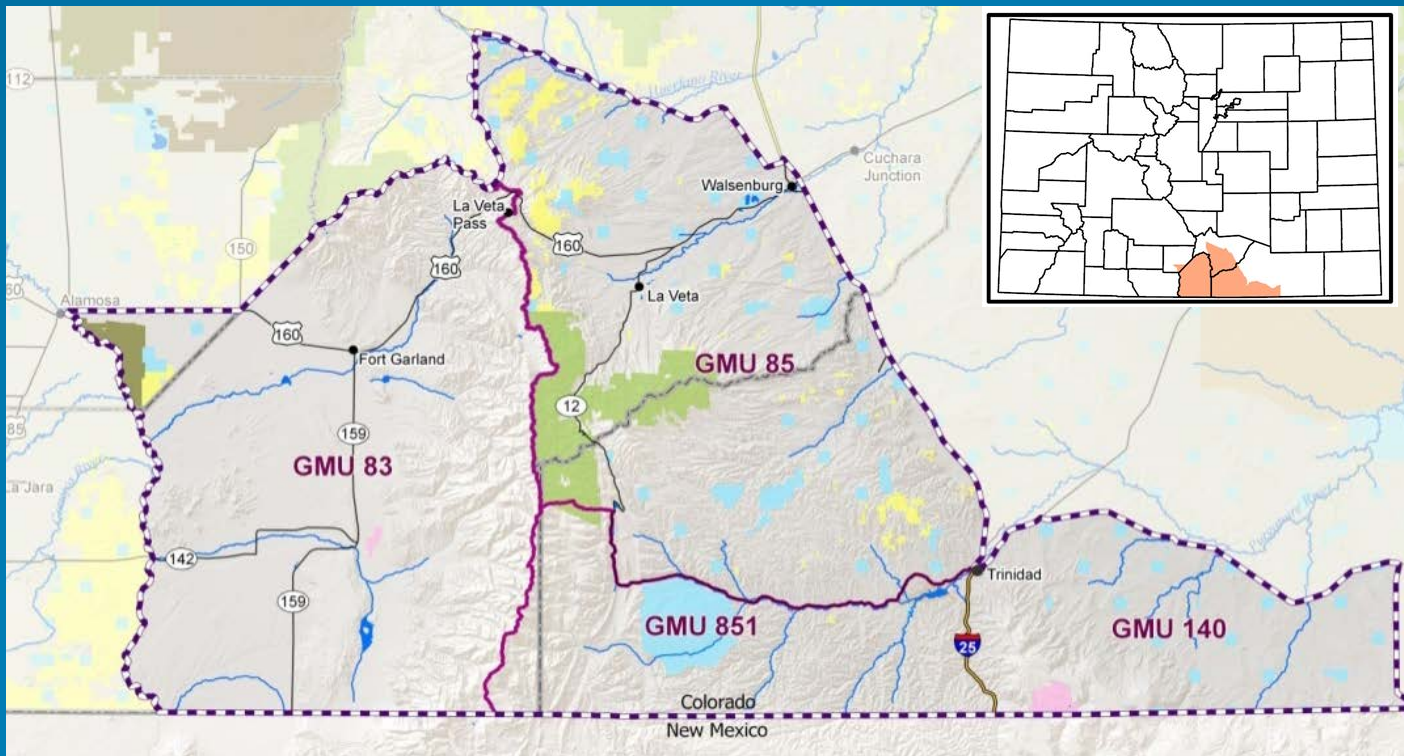


L-19: Mountain Lion Management Plan

- GMUs: 83, 85, 140, 851
- 3,321 mi² (90% Private, 10% Public,)
- Contains portions of Las Animas, Huerfano, Costilla Counties



COLORADO
Parks and Wildlife

Department of Natural Resources

Why is Revision Needed?

Increased Population

- Existing plan doesn't match field observations
- Public/Agency suggest an increase in sightings and conflicts

Plan Evaluation

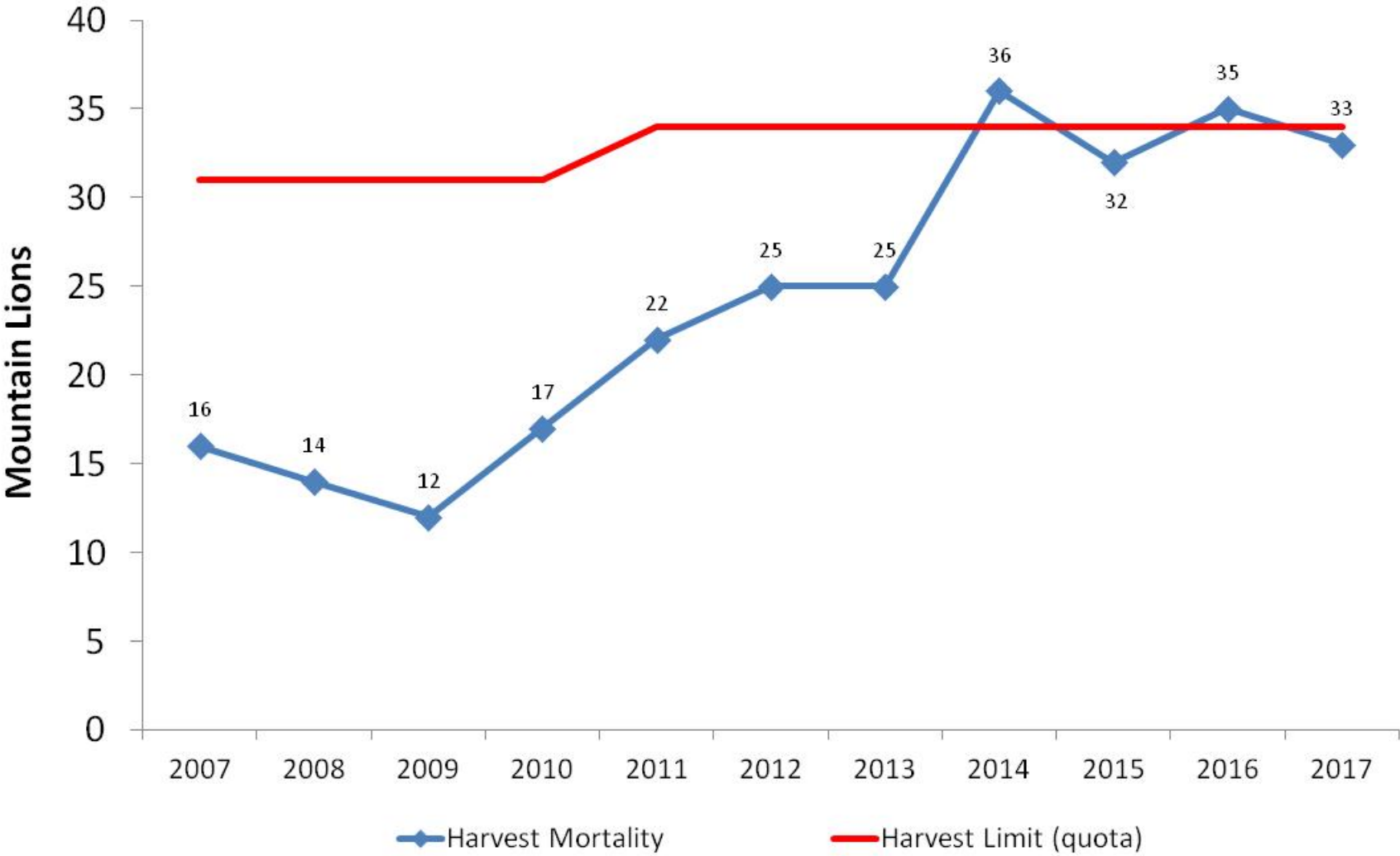
- Modeled population abundance
 - 45-94 more lions
- Current harvest rates may not be limiting the population



COLORADO
Parks and Wildlife

Department of Natural Resources

L-19 Mountain Lion Harvest 2007-2017



Scientific Studies

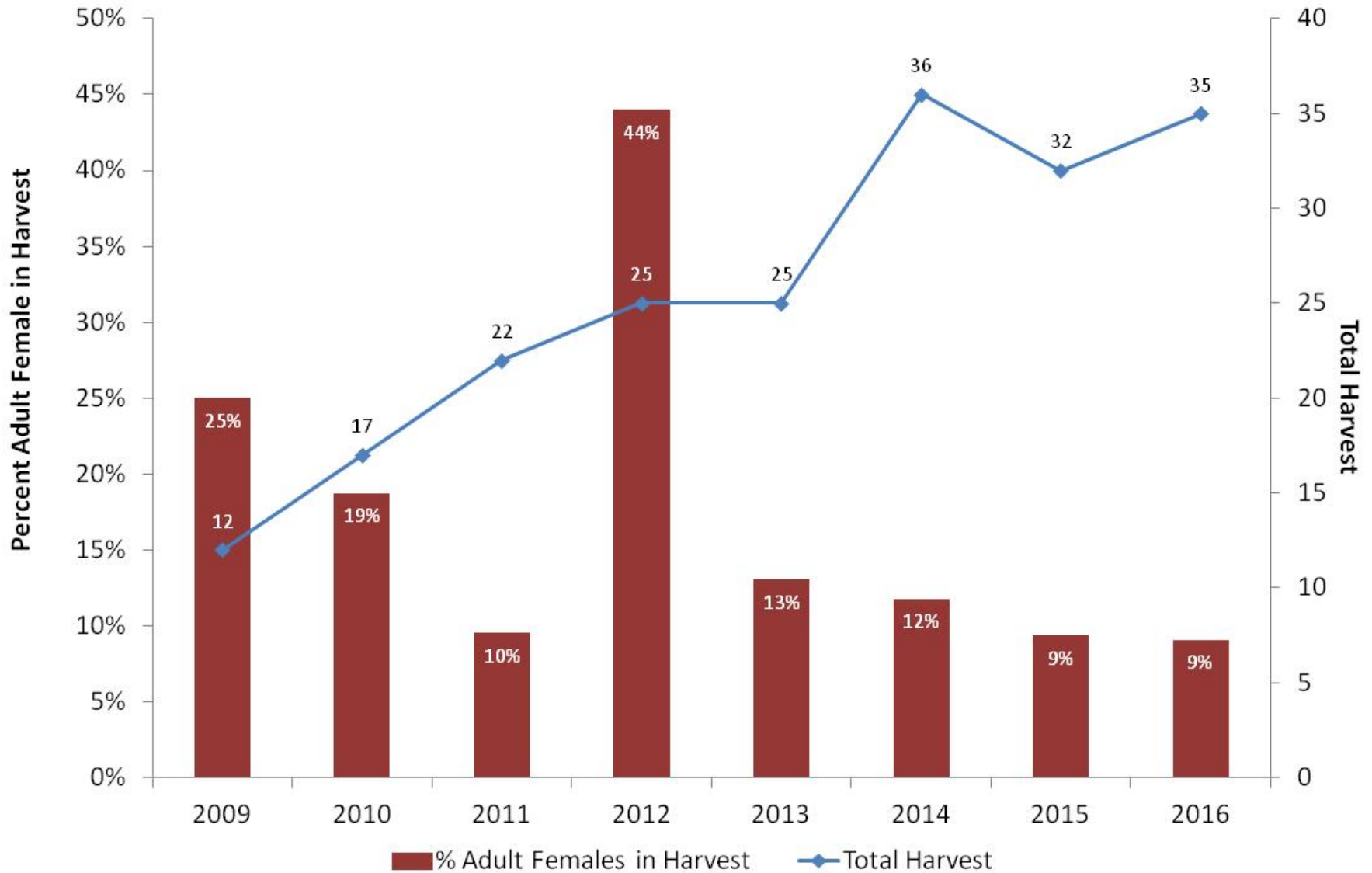
- Vulnerability to harvest using hounds may vary for different gender and age classes
- Studies indicate 20-25% of adult females in total harvest is an inflection point for a declining population
- ***We propose to use proportion of adult female in harvest as a monitoring variable***



COLORADO
Parks and Wildlife

Department of Natural Resources

L-19 Proportion of Adult Females in Harvest 2009-2016



Adaptive Management Approach

- Proposed Goal: Stable Management
- Monitoring Threshold: $\leq 20\%$ adult female in harvest over a 3-year running average
- Raise Harvest Limit:
 - Current: 34 lions
 - April 2019-March 2020 Proposal: 39 lions
- Annually:
 - Evaluate harvest limit changes relative to the monitoring threshold



COLORADO
Parks and Wildlife

Department of Natural Resources