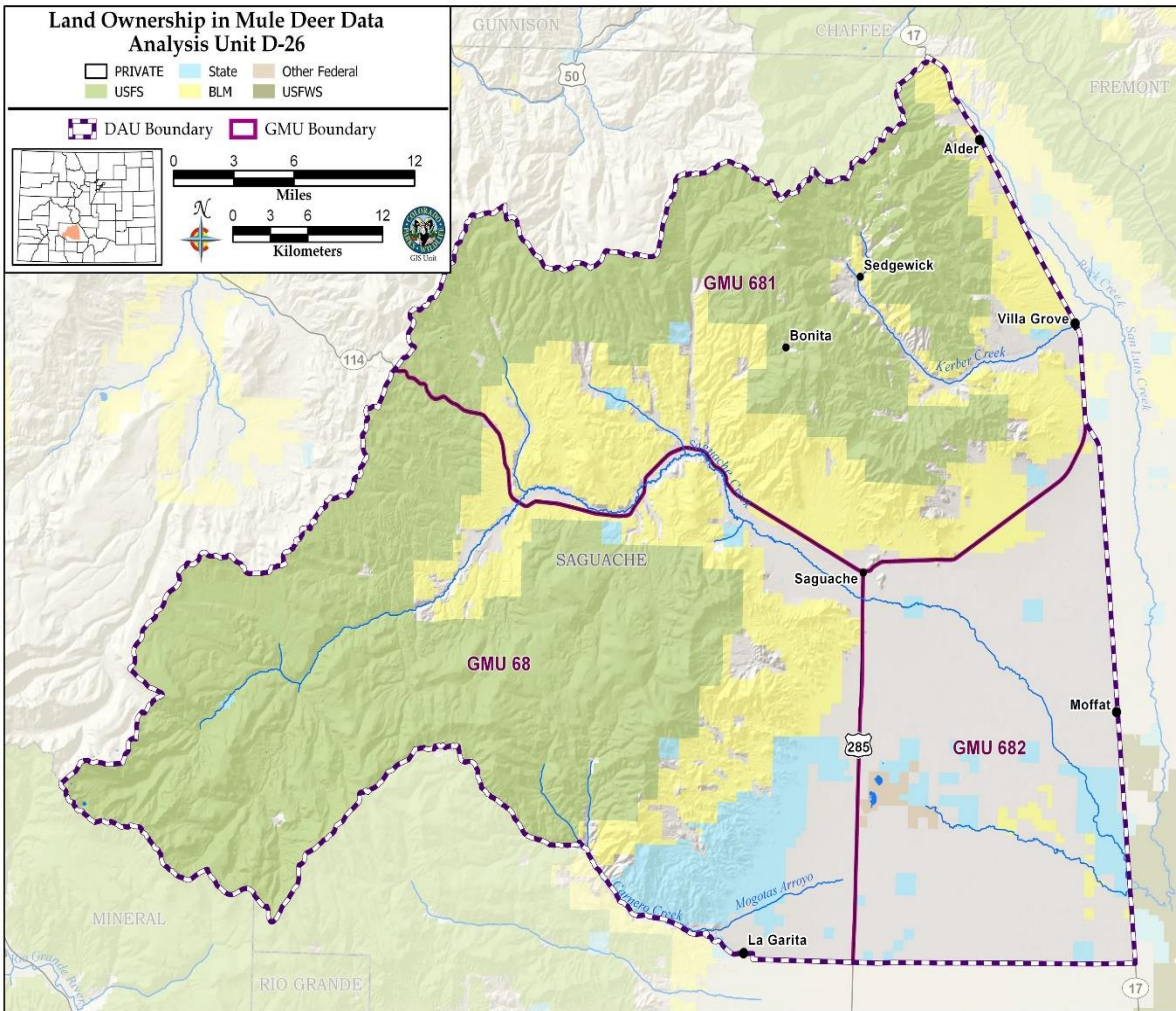


D-26 Saguache Deer HMP

GMU's 68, 681 & 682

~ 1,302 square miles
(833,000 acres)

47% RGNF, 20%
BLM, 6% CO State,
26% Private

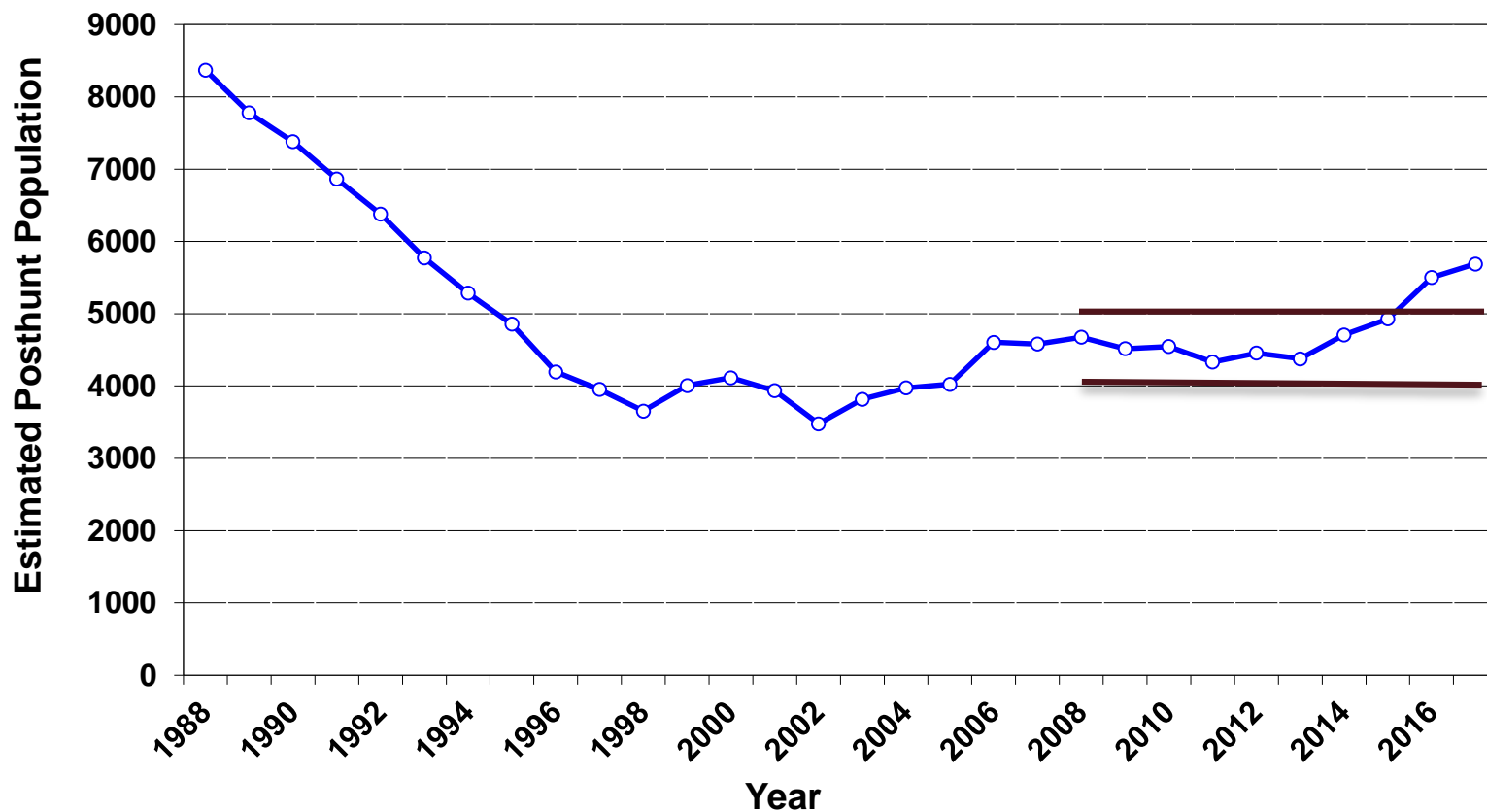


COLORADO
Parks and Wildlife
Department of Natural Resources

9 January 2019

Brent Frankland, Wildlife Terrestrial Biologist, SW Region

D-26 Posthunt Population Estimate



—○— Posthunt Population Estimate

— 2008 Population Objective

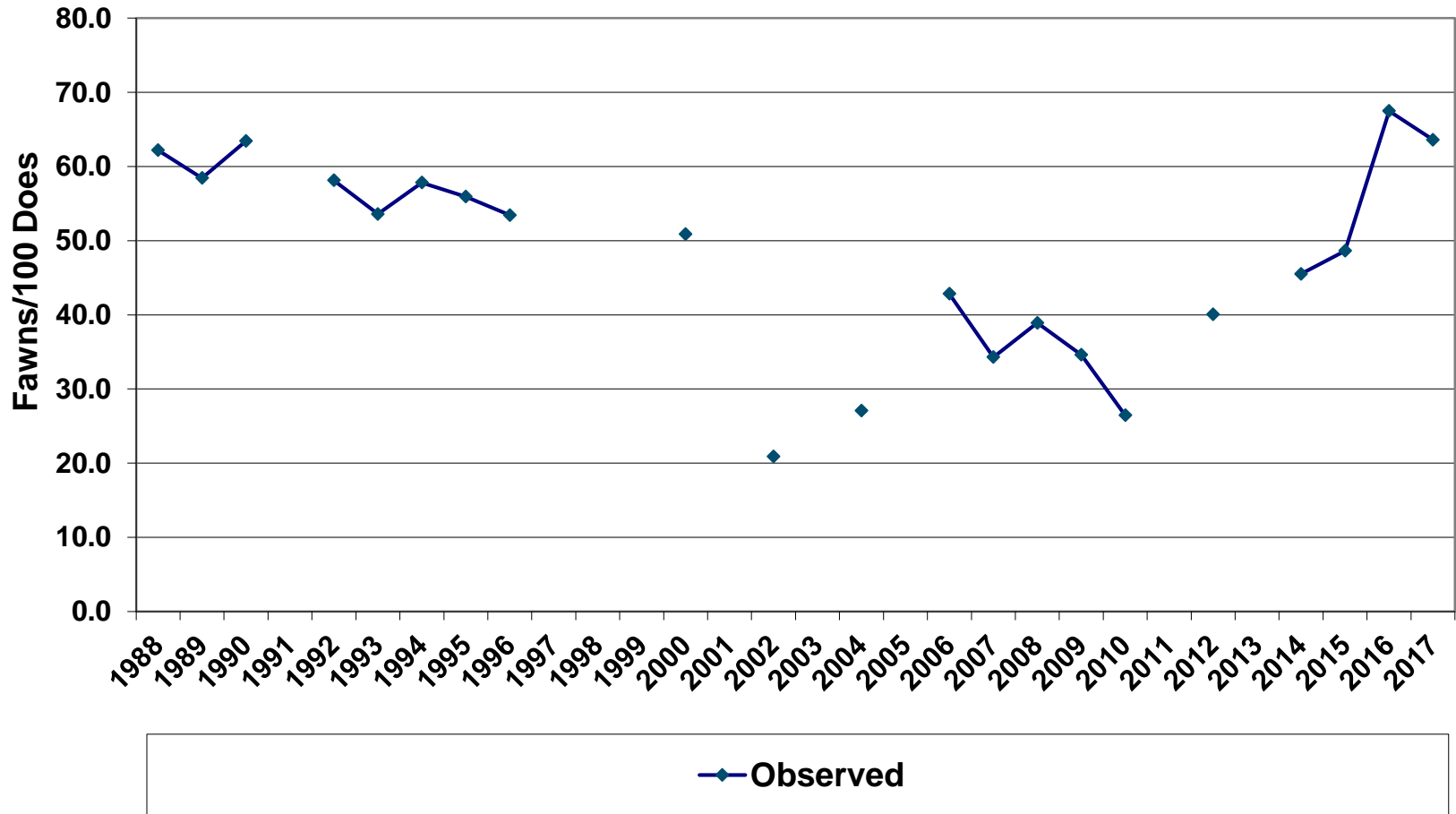


COLORADO

Parks and Wildlife

Department of Natural Resources

D-26 Observed Fawn/Doe Ratios



D-26 Herd Management Plan PUBLIC INPUT PROCESS

- Public meeting – Saguache
- Public online survey
- Public comment period
- Input from RGNF, BLM, HPP

Results:

Maintain estimated deer population
Increase buck to doe ratios



COLORADO

Parks and Wildlife

Department of Natural Resources

D-26 Herd Management Plan

ALTERNATIVE OBJECTIVES SUMMARY

Alternatives	Posthunt Population Size	Posthunt Sex Ratio
Current Objective	4-5,000 deer	21–24 bucks to 100 does
2017 Model Estimate	5,680 deer	30 bucks to 100 does
Alternative 1	3,5-4,500 deer	21-24 bucks to 100 does
Alternative 2	4,5-5,500 deer	24-26 bucks to 100 does
Alternative 3 PREFERRED	5,5-6,500 deer	26-29 bucks to 100 does



COLORADO

Parks and Wildlife

Department of Natural Resources

D-26 HMP

Significant Issues and Strategies to Address the Concerns

- Damage to agricultural land
- Winter range – quantity and quality, water
- Recreational activity
- Disease – CWD



COLORADO

Parks and Wildlife

Department of Natural Resources

Strategies For Achieving Objectives

- **Population** – adjust licenses
 - winter range habitat enhancement
- **Herd Composition** – adjust licenses
 - disease risk

