

Adjusting Population Size

Focus on Females

Population above objective

- Increase female harvest

Population below objective

- Decrease female harvest

Population within objective range

- Maintain female harvest levels
- Annual license adjustments depending on conditions



Adjusting Sex Ratio

Focus on Males

Sex ratio above objective

- Increase male harvest

Sex ratio below objective

- Decrease male harvest

Sex ratio within objective range

- Annual license adjustments depending on conditions

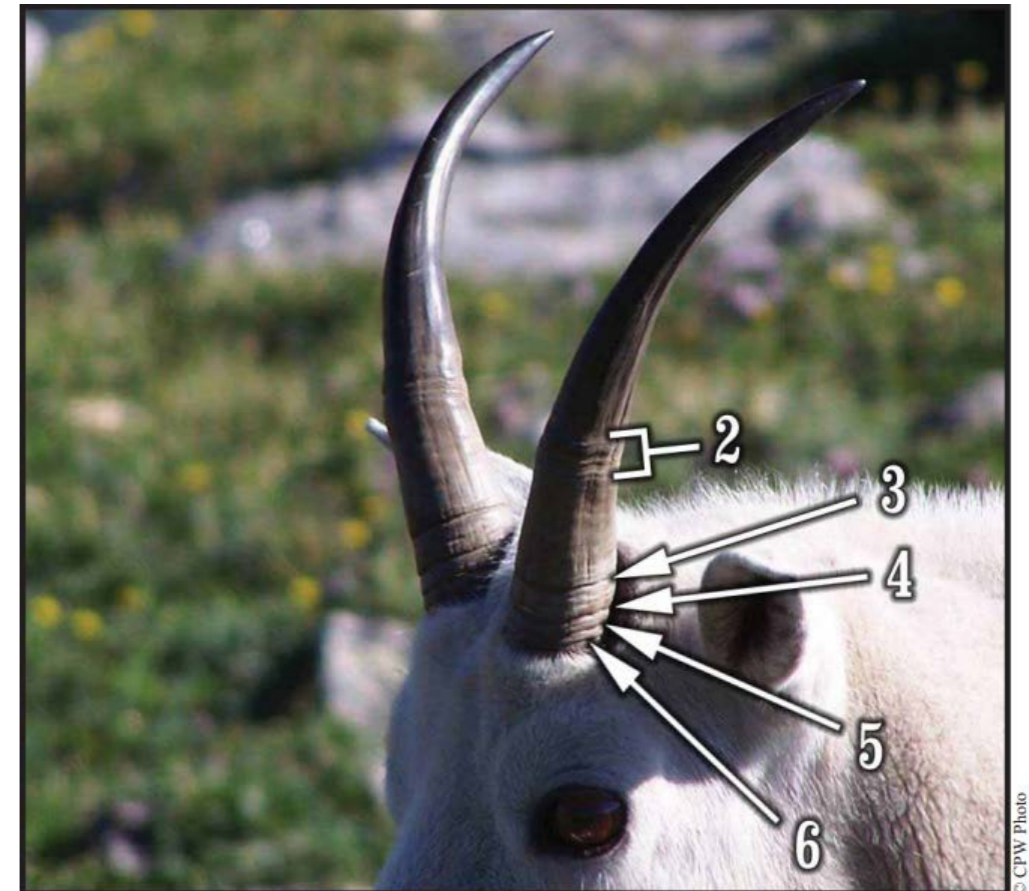


Harvest Strategies

Bighorn Sheep, Mountain Goats, Moose

License Numbers

- Mandatory Checks
 - Age of Harvested Animals
 - Hunter Success Rates
 - Hunter Observations
- Surveys
 - Helicopter
 - Ground Counts



Harvest Strategies

Black Bears & Mountain Lions

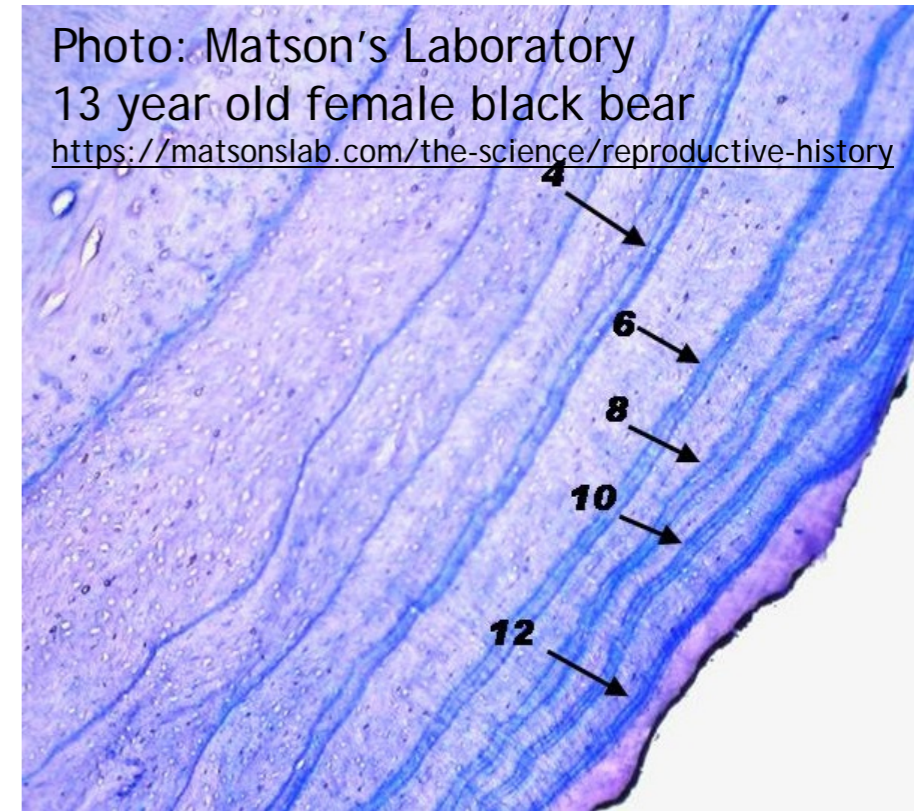
Mandatory Checks

- Game Management Unit
- Gender
- Age

Human-Wildlife Conflicts

Density Estimates

Photo: Matson's Laboratory
13 year old female black bear
<https://matsonslab.com/the-science/reproductive-history>



Harvest Strategies

Black Bears

Management Strategy

- Population trajectory
- Conflicts

Recommendations

- License numbers & types
- Targeted harvest
 - Areas of conflict



Harvest Strategies

Mountain Lions

Management Strategy

- Mortality Thresholds

Harvest Limits

- Set for one or more Game Management Units
- Reach harvest limit = close unit



© Ken Logan, CPW

