

JOHN MARTIN RESERVOIR

SWA Management Overview



COLORADO

Parks and Wildlife

Department of Natural Resources

Wildlife Area Overview

Reservoir project area is owned by US Army Corp of engineers

John Martin SWA is approximately 18,000 acres

Colorado Game Fish and Parks first acquired a license agreement in 1968

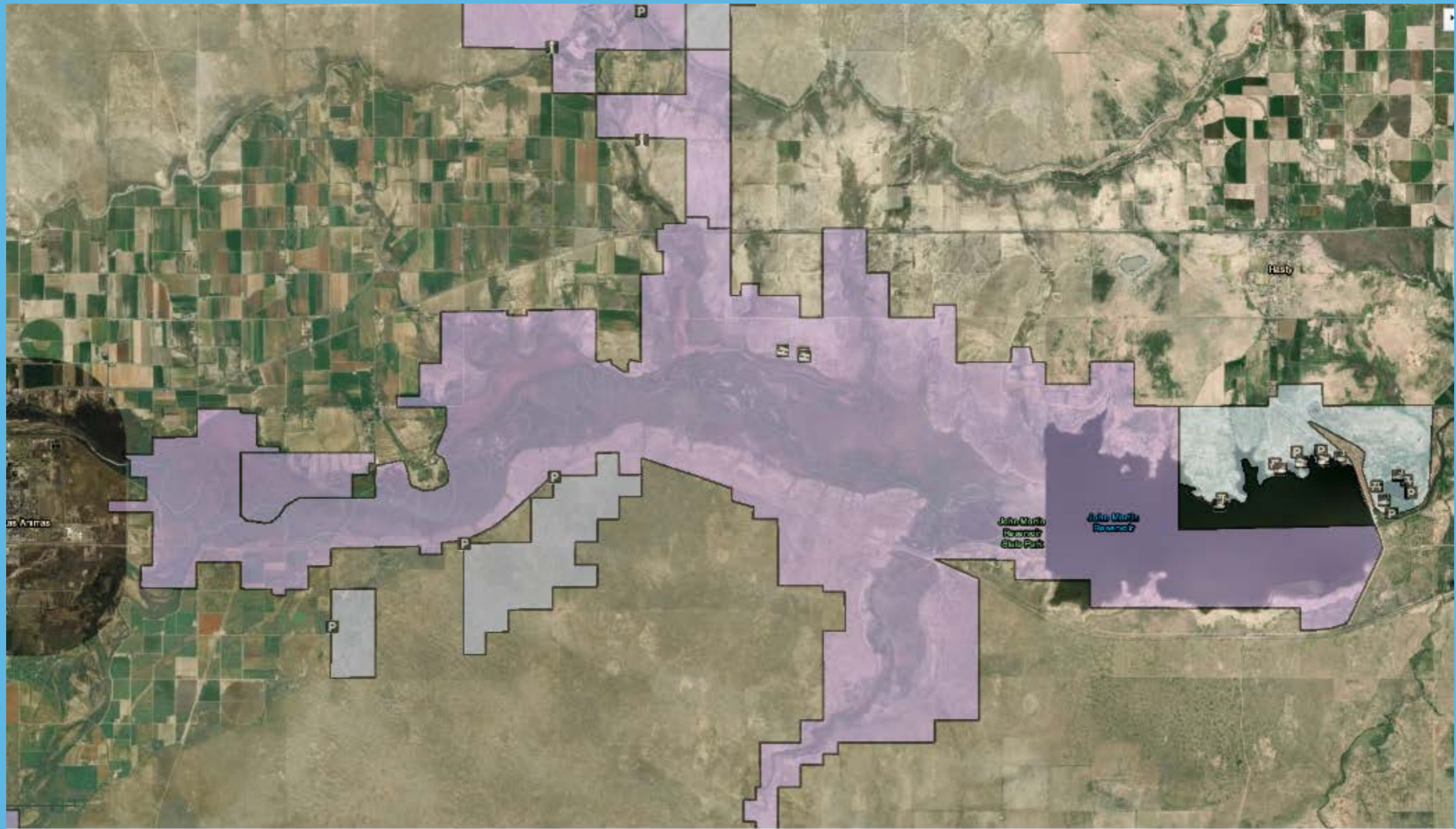
Updated agreement in 1993

Currently going through the process to renew the license agreement in 2019

Provides connectivity to other CPW interest



John Martin SWA Connectivity



SWA Description



Hunting & Fishing Access

Hunting

Elk

Whitetail deer

Mule deer

Pronghorn

Turkey

Waterfowl (Ducks and geese)

Smallgame (furbearers, rabbits, quail, pheasant, etc.)



Fishing

Largemouth bass, smallmouth bass, white bass, striped bass, wiper, saugeye/walleye, catfish (blue, flathead & channel), crappie and sunfish



Watchable Wildlife & Recreation

Watchable Wildlife

Over 415 bird species

100,000 migrating/overwintering waterfowl

Eagles

Game and Non-game species

Recreation

Camping

Shoreline water sports/boating access

Site-seeing



Species Conservation

T&E Species

Least Tern-Endangered

Piping Plover-Threatened

Black Rail-Proposed as threatened (final listing decision in the fall of 2019)



Specific Management Areas

Environmental Sensitive Areas (ESA's) on South and North shores

- No vehicle access

- Seasonal closures to all activity (nesting/brood rearing)

Cattail Slough Management Areas

Black Rail habitat along Gageby Creek and west river corridor

Waterfowl Seasonal Closure on East end of reservoir

No boating access to protect resting waterfowl and eagles

