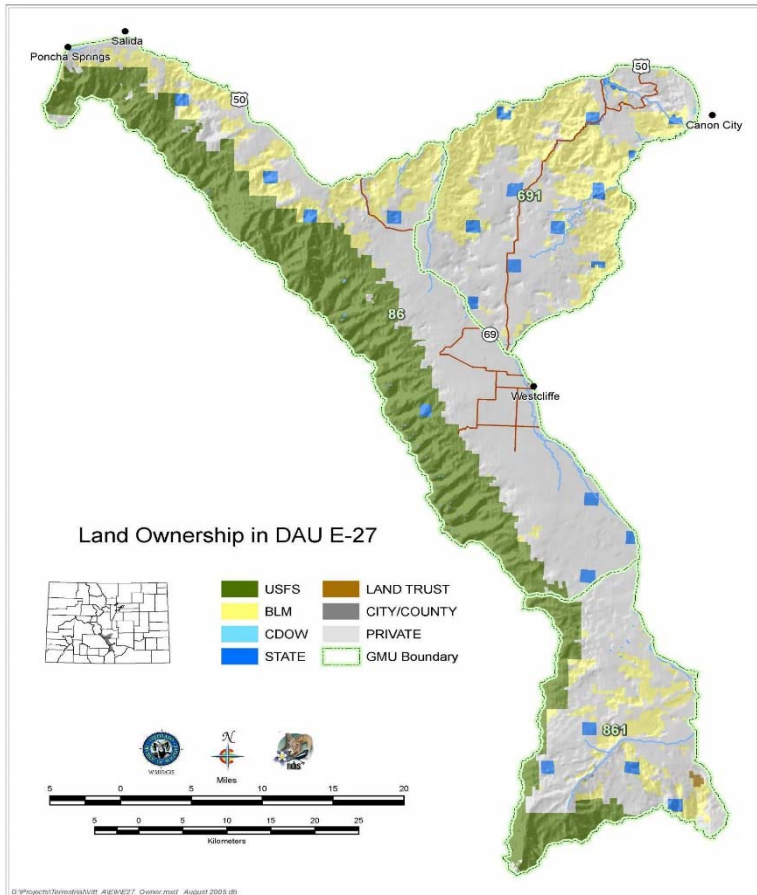


Sangre de Cristo Elk Herd Management Plan Data Analysis Unit E-27

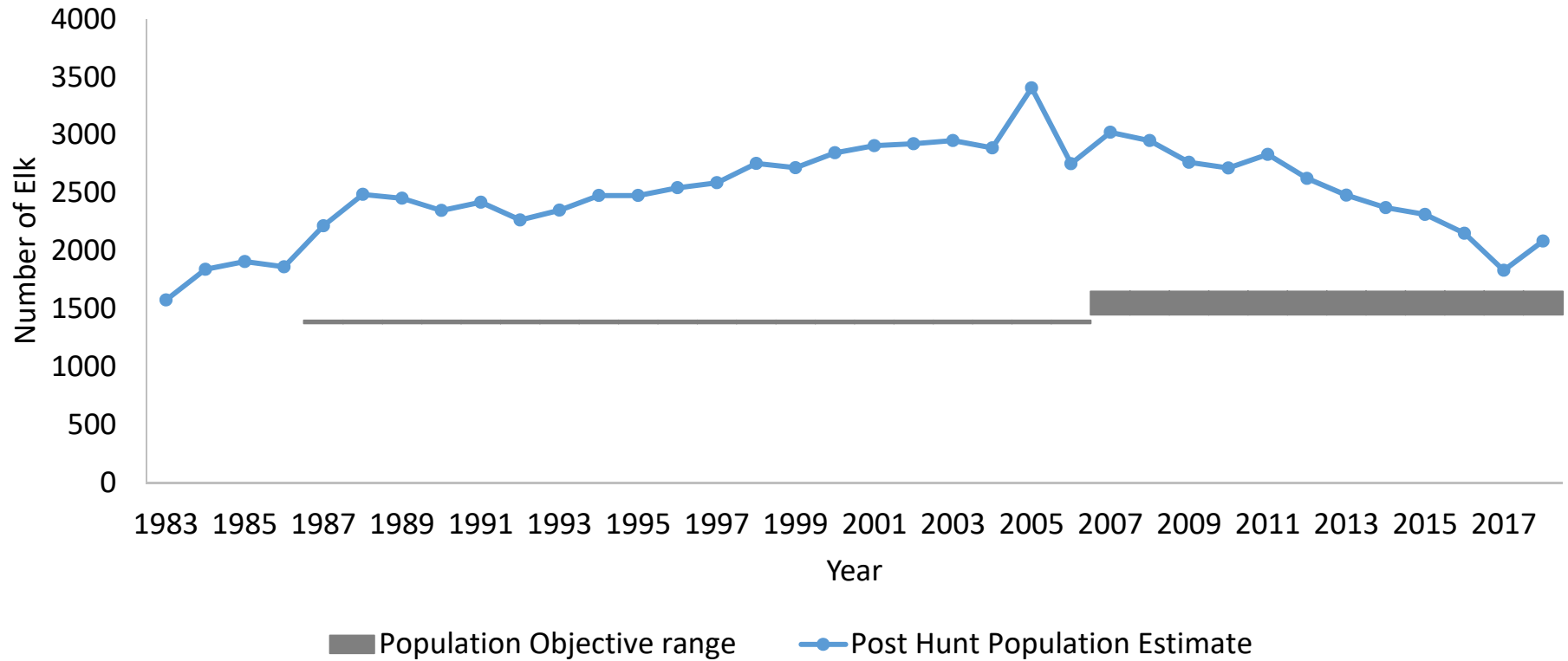


- 940 mi²
- GMUs: 86, 691, 861
- Portions of Chaffee, Custer, Fremont, Huerfano Counties
- 53% private
- Over-the-Counter unit for bull elk hunting



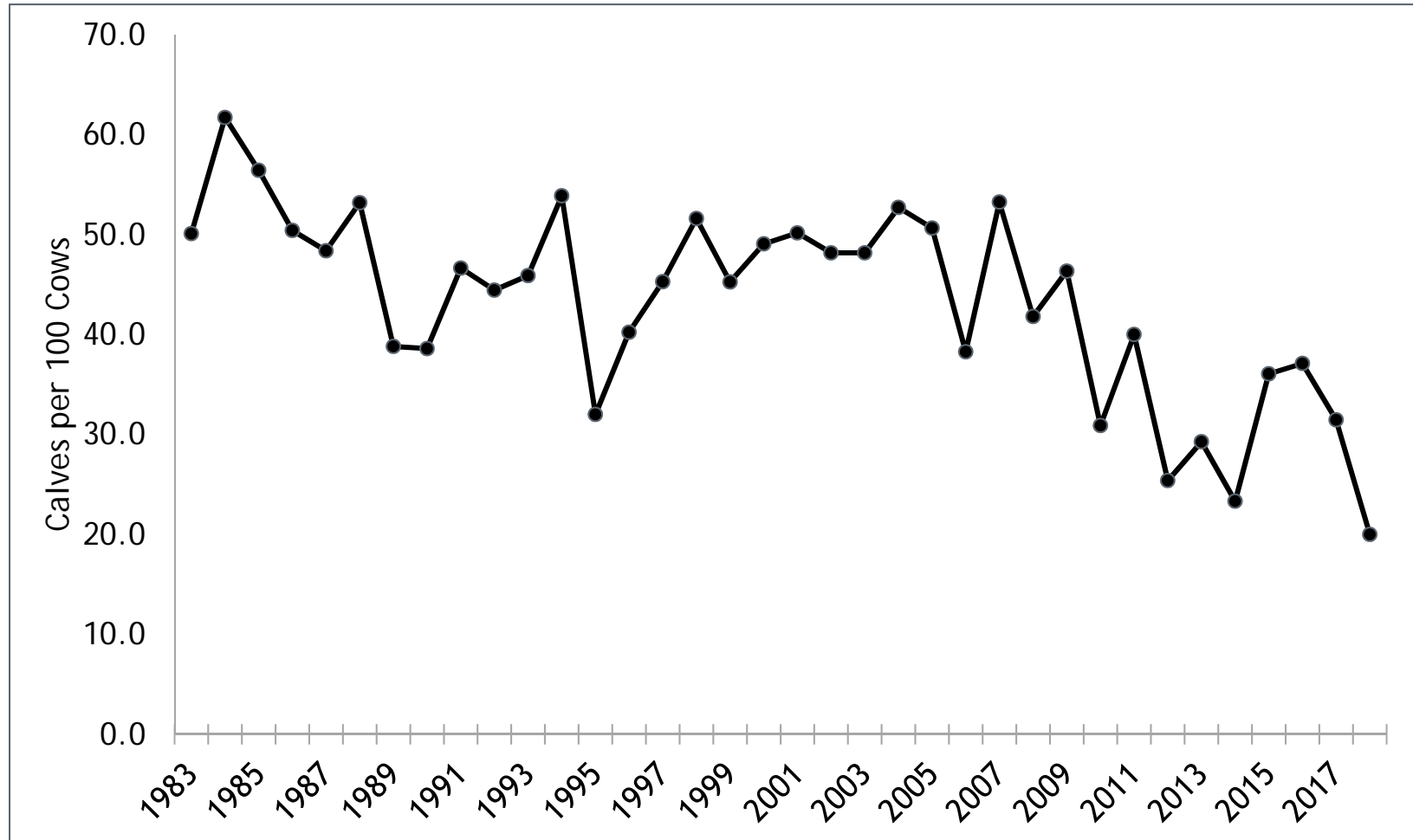
LIVE LIFE
OUTSIDE

Estimated Population



LIVE LIFE
OUTSIDE

E-27 Post Hunt Observed Cow/Calf Ratios



LIVE LIFE
OUTSIDE

Public Outreach

- Surveys
 - 270 Landowners >35 Acres
 - 86 responses
 - 896 Hunters
 - 155 responses
- Public and Landowner Meetings
- Results
 - Landowners & hunters supported an increase in the population objective



LIVE LIFE
OUTSIDE

E-27 Sangre de Cristo Elk Herd Important Issues

- Low Density Housing development
- Game Damage
- Elk taking refuge on private lands
- Hunter crowding and public access
- Habitat changes
- Movement of elk between E-27 & E-11
- Declining cow/calf ratios



LIVE LIFE
OUTSIDE

Current Status and Alternatives

- Post Hunt Population Estimate:
 - Objective: 1,450-1,650 Elk
 - Modeled: 2,100 Elk
- Post Hunt Population Alternatives
 - Alternative 1: 1,450-1,650 Elk
 - Alternative 2: 1,800-2,200 Elk

Expected Sex Ratio as an OTC DAU is 18-30 Bulls: 100 Cows



LIVE LIFE
OUTSIDE

Strategies to Address Management Concerns and Objectives

Addressing Management Concerns

- Land protection
- Public hunting access
- Habitat treatments
- Mitigate game damage

Managing to objectives

- Population within objective
- Examine cow harvest annually
 - Adjust antlerless licenses as necessary



LIVE LIFE
OUTSIDE