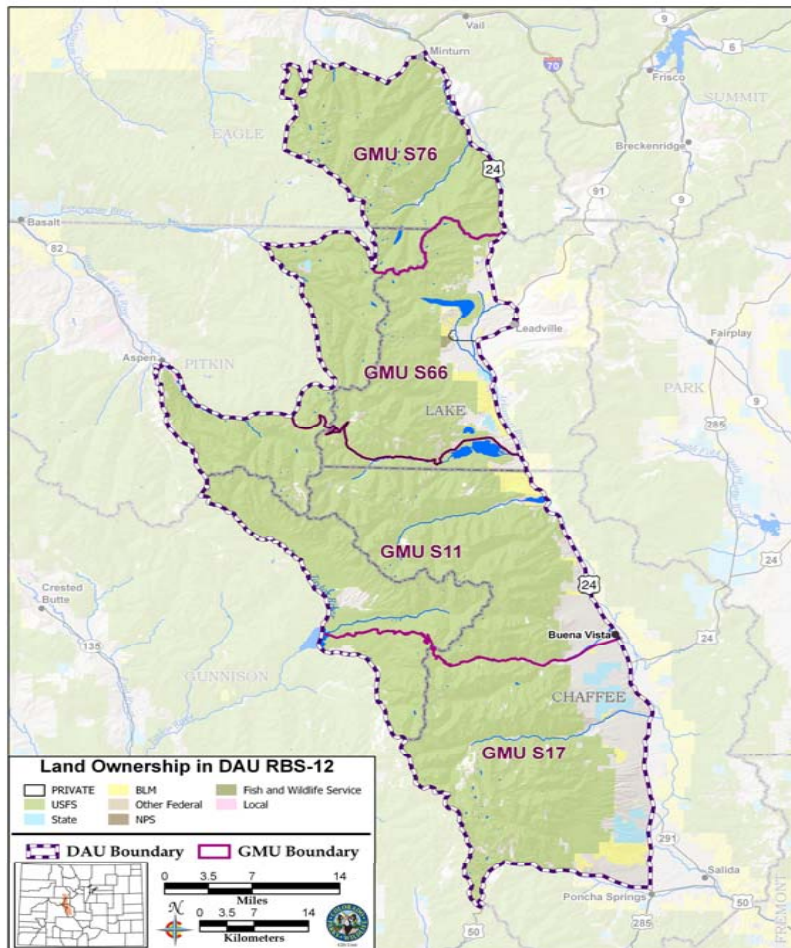


Collegiate Range Bighorn Herd Management Plan Data Analysis Unit RBS-12

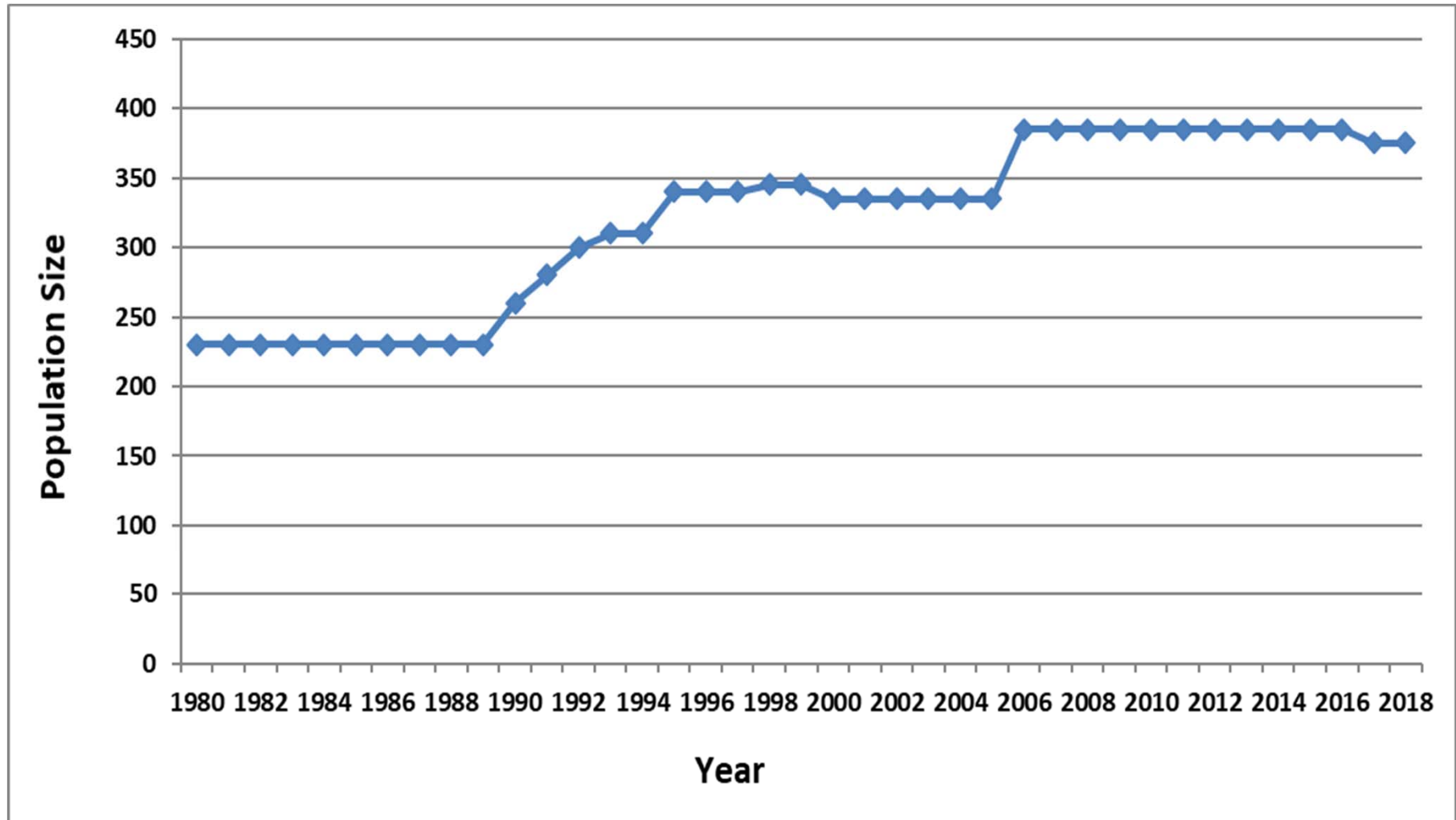


- 1,317 mi²
- GMUs S11, S17, S66, S76
- Portions of Chaffee, Eagle, Gunnison, Lake, and Pitkin Counties
- 88% Public
- Tier 1 Status



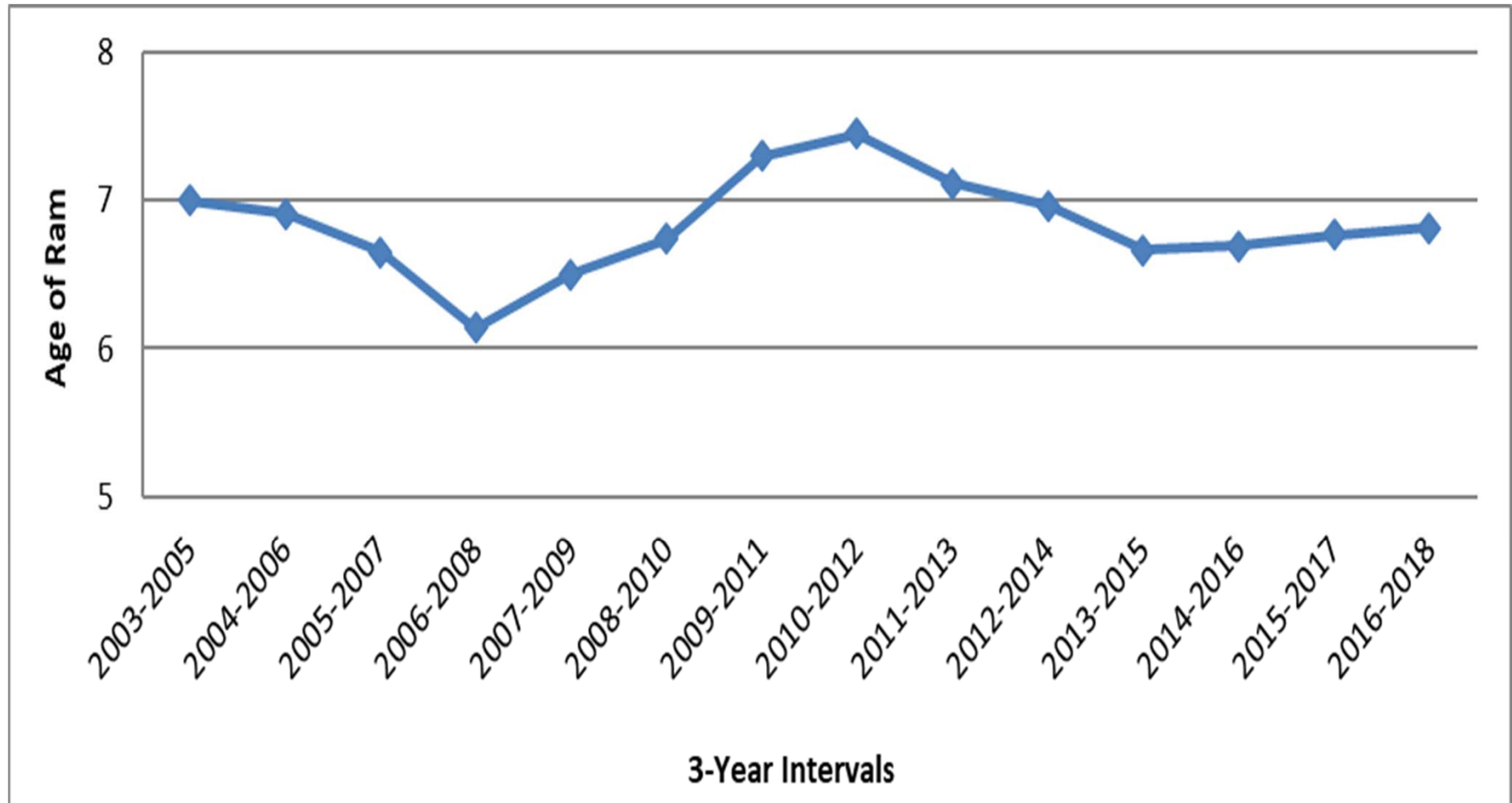
Jamin Grigg, Wildlife Biologist, Salida, Area 13

RBS-12 Estimated Population



LIVE LIFE
OUTSIDE

RBS-12 Age of Harvested Rams



LIVE LIFE
OUTSIDE

RBS-12 Collegiate Range Bighorn Herd

Important Issues

- Limited available winter habitat
- Potential for interactions with domestics
- Increasing human recreation
- Competition with mountain goats



LIVE LIFE
OUTSIDE

Public Outreach

- Federal land management partners, local government officials, and interest groups
- Wild Sheep/Domestic Sheep Working Group
- Posted on CPW Website



LIVE LIFE
OUTSIDE

Current Status and Alternatives

Current Post-Hunt Population Estimate

- 375 Bighorn Sheep

Post Hunt Population Alternatives

- Alternative 1: 300-350 Bighorn Sheep
- Alternative 2: 350-400 Bighorn Sheep
- Alternative 3: 400-450 Bighorn Sheep

Average Age of Harvested Ram Alternatives

- Alternative 1: 5-7 years
- Alternative 2: 6-8 years
- Alternative 3: 7-9 years



LIVE LIFE
OUTSIDE

Strategies to Address Management Concerns and Objectives

Addressing Management Concerns

- Work with federal partners and private landowners to create separation between domestics and wild sheep
- Actively comment on land use proposals related to human recreation impacts on bighorns
- Actively manage mountain goat population to limit competition
- Potential habitat improvement projects

Managing to objectives

- Currently managing to preferred alternatives
- Annual population monitoring



LIVE LIFE
OUTSIDE