

Over-the-Counter Licenses

*PWC License Distribution Workshop
23 August 2022*



**LIVE LIFE
OUTSIDE**

*Brandon Diamond, Area Wildlife Manager
Colorado Parks and Wildlife*

Over-the-Counter (OTC)

Defined in Chapter W-0, #000 (A)(10)(c)

- No application/draw
- No qualifying license
- No preference points required

Mostly, but not always “unlimited”



- ◆ **Over-the-counter (OTC) licenses:** Licenses (unlimited, unlimited add-on bear and leftover limited) that are available without having to go through the draw(s). They do not require buying/having a qualifying license, do not use preference points and may be purchased any time before and during a season. They're available at over 650 sales agents around the state, including CPW offices and state parks, online, or by phone.



LIVE LIFE
OUTSIDE

Limited Licenses

- Limited in number
- Issued through an application and draw process
- Qualifying license required to participate in draw
- May require preference points to draw
- Frequency of draw driven by Supply and Demand
- Resident/Nonresident allocation driven by PWC policy & Regulation
- Degree of limitation may be based on hunter preferences and/or biological constraints (sex ratios, crowding/experience, herd size and performance)



LIVE LIFE
OUTSIDE

OTC with caps

- Limited Quantity
- Distributed first come first serve, outside of the draw
- Available through internet, phone, and license agents
- Does not differentiate between Residents & Nonresidents
- CPW has used this model for elk & bear previously



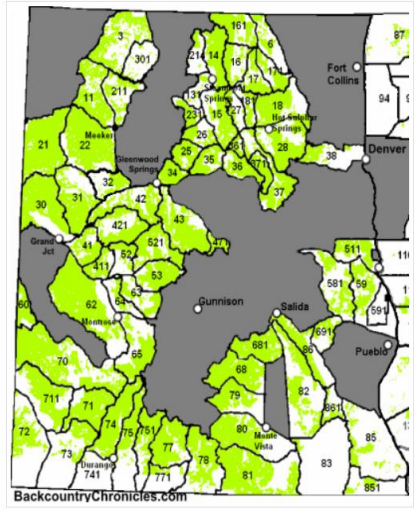
LIVE LIFE
OUTSIDE

Hunt Elk in Colorado with Over-the-Counter Elk Tags in 2022

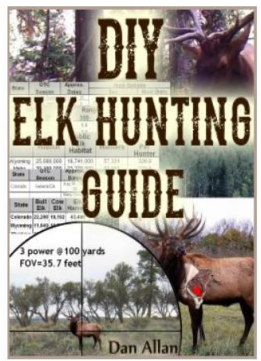
Want to hunt elk every year in Colorado without having to draw a tag?

Residents and Non-residents can buy Elk Licenses Over-the-Counter (OTC) in many GMUs in Colorado (Table 1).

There are two OTC archery hunts, an Either-Sex and an Antlerless hunt (some dates) and



---> [DIY Elk Hunting Guide](#)



Join our private newsletter and get exclusive outdoor tips.
Email*

Common Questions About OTC Hunting Opportunities in Colorado

Jun 2 • Written By Ryan McSparran

If you didn't come up with a tag in the limited draw this year, remember that Colorado is the land of opportunity. Over-the-counter (OTC) elk licenses allow you to hunt every year, without having to apply for a limited tag.

If you have questions about these over-the-counter opportunities, you're not alone. Details surrounding the OTC licenses are some of the most common questions we receive. Here are answers to a few of the most frequently asked

Home / Blog Categories / Colorado Draw Results: Secondary, Leftover and OTC Options

TIPS · 1 COMMENT · JUN 02, 2022

Colorado Draw Results: Secondary, Leftover and OTC Options



Colorado Over-The-Counter Elk Hunting

Avoid the Application Apocalypse and go hunting!

Last summer, I wasn't sure what I wanted to do for elk hunting in my home state of Colorado. I had applied for a limited entry unit as my first choice and then for a limited either-sex license in the 4th rifle season as my second choice. What I got instead was a refund and a bit of uncertainty on what my plans might be. I had drawn a buck tag, and with the season structure offering a later opening, I had prioritized that hunt. However, I do live in country with fantastic elk herds, even though many of them now magically find themselves on private land on opening week of archery season.

I've never been an archery hunter and wasn't going to attempt an elk hunt with very



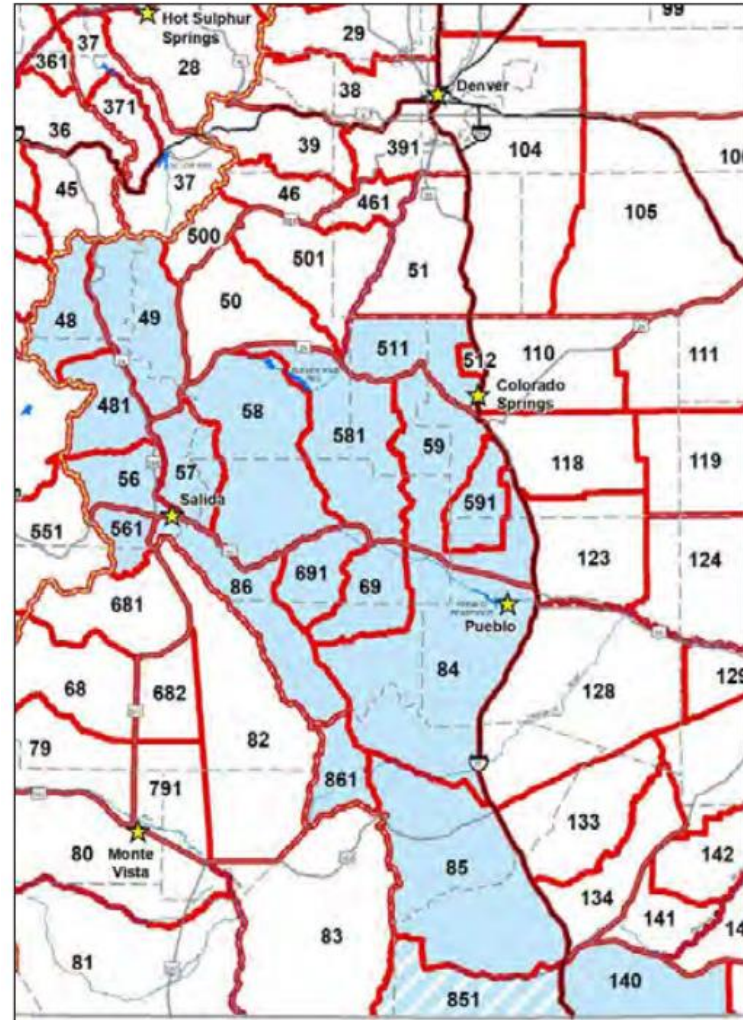
Colorado OTC opportunities...



**LIVE LIFE
OUTSIDE**

DEER (*mule deer & white-tailed*)

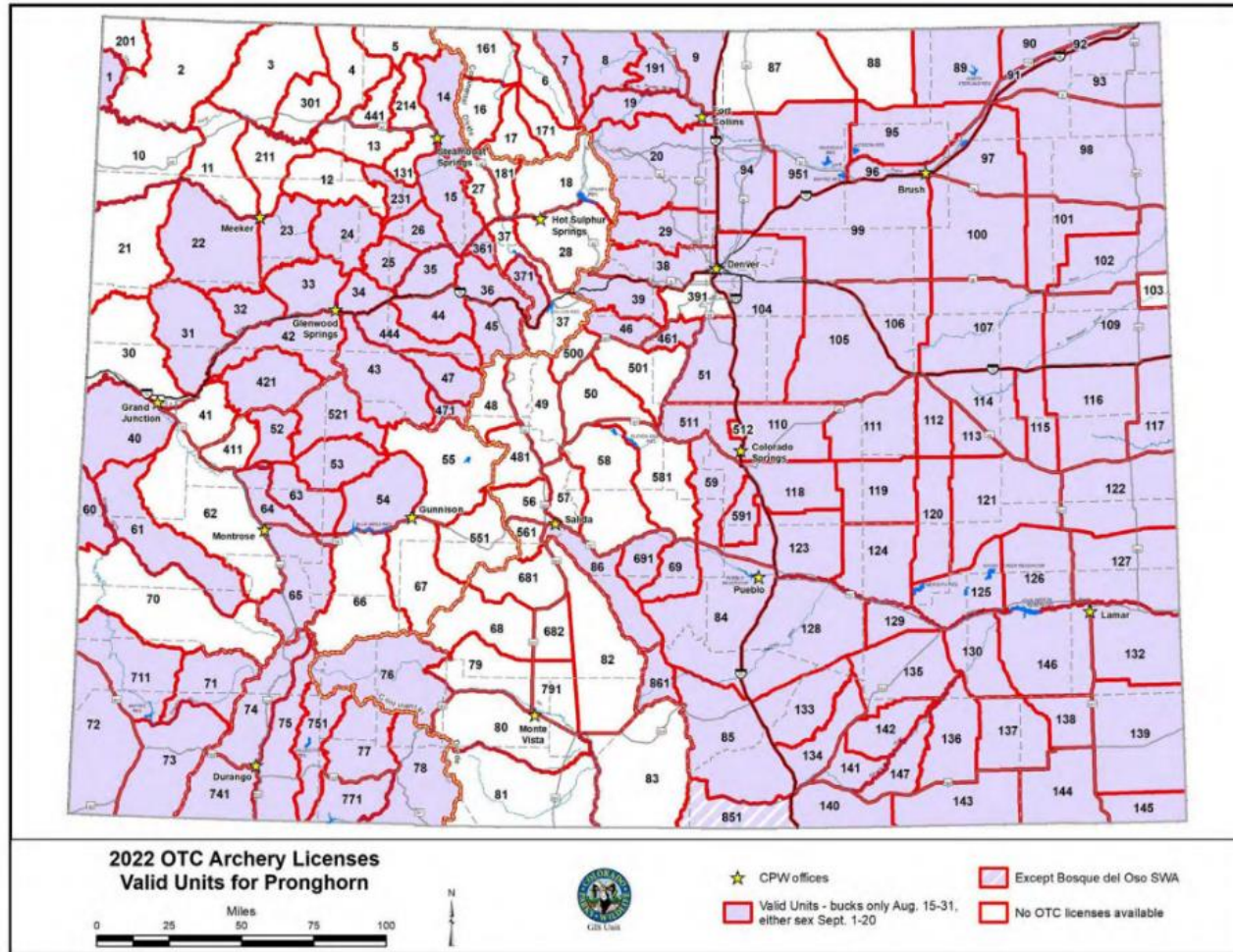
- OTC antlered licenses were historically available across much of Western Colorado, for all manners of take (archery, muzzleloader, rifle)
 - *Evolution to Limited*
- 1999 all deer licenses were totally limited based on declining population trends and hunter preferences (ie. demand for higher sex ratios)
- Either-sex *white-tailed only* is the only OTC deer option in Colorado (SE Region)
 - <1,000 licenses annually



LIVE LIFE
OUTSIDE

PRONGHORN

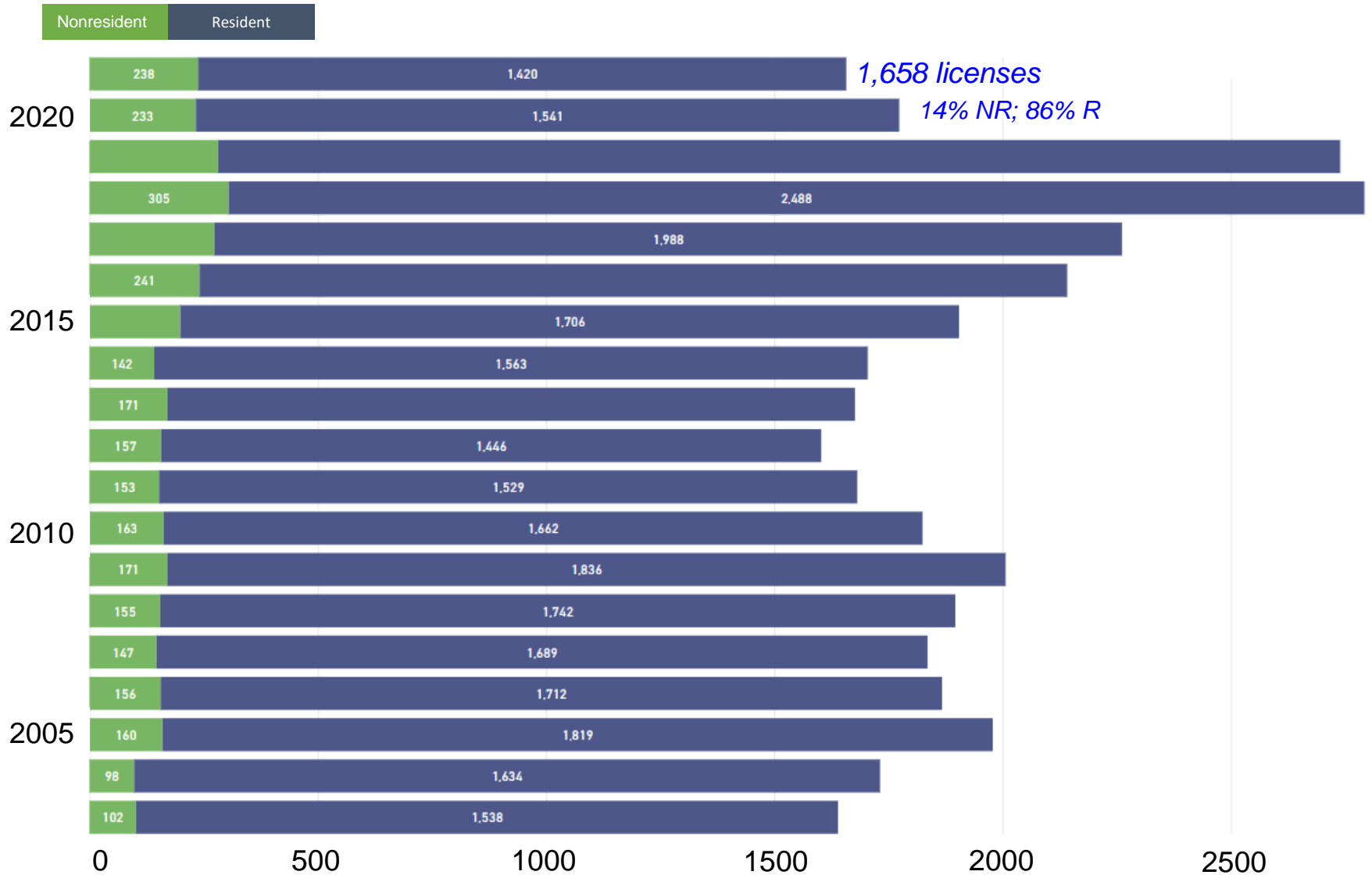
- Either-sex archery is the only OTC option for pronghorn in Colorado



LIVE LIFE
OUTSIDE

PRONGHORN - OTC Archery

License Sales by Residency

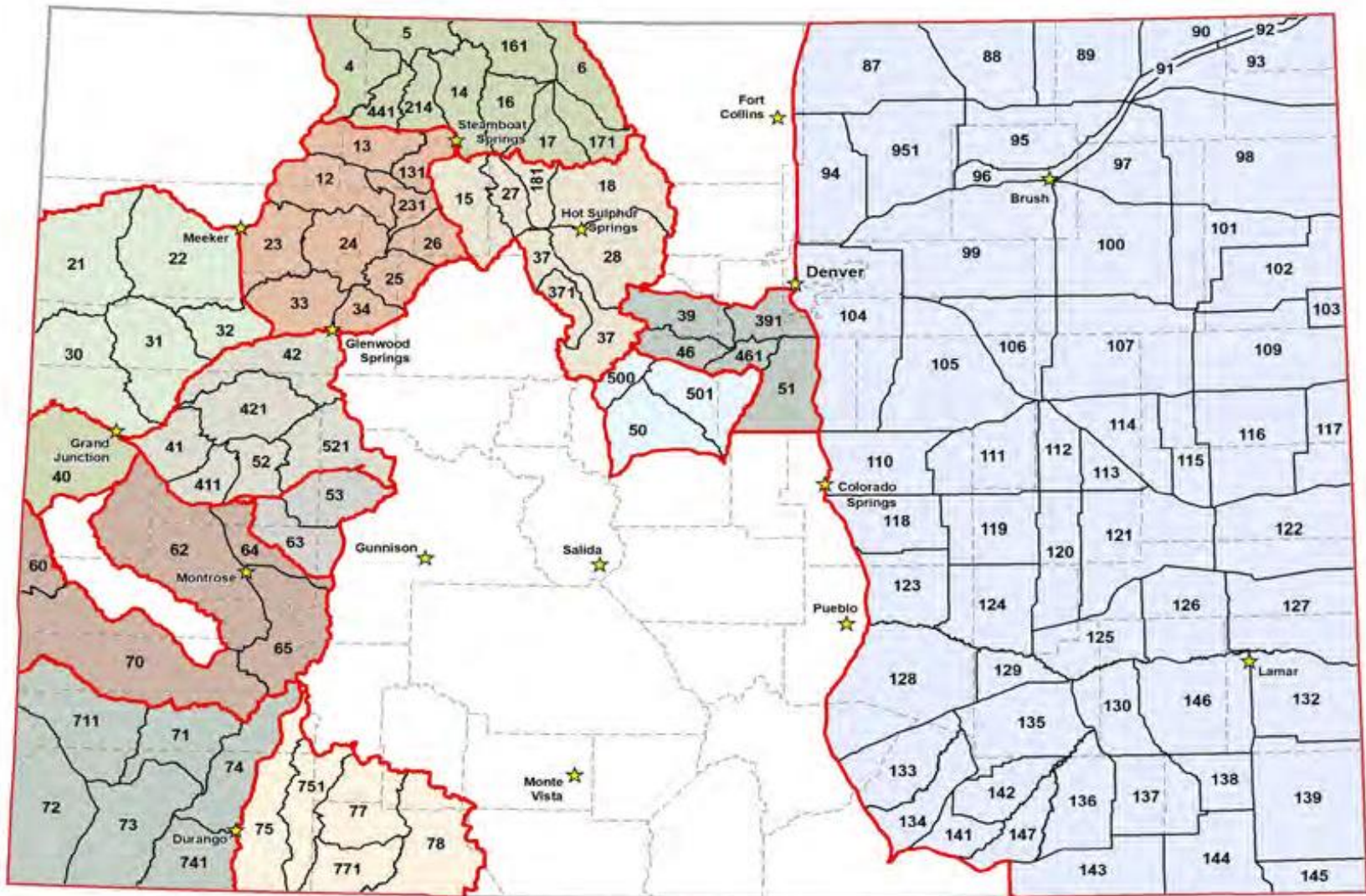


BEAR

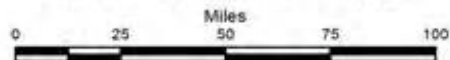
- “Add-on” licenses for archery and muzzleloader seasons
- Private Land Only (PLO) in select units
- Regular Rifle Seasons
- Rifle Plains season



LIVE LIFE
OUTSIDE



**Units with OTC Rifle
Black Bear Licenses 2022**



★ CPW offices

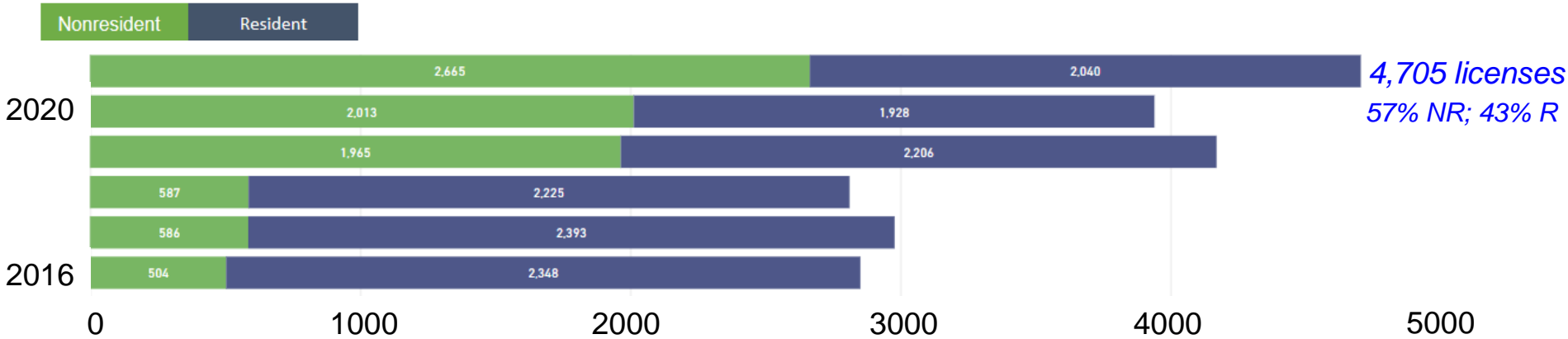
□ Only limited licenses available

▭ Grouped units boundary

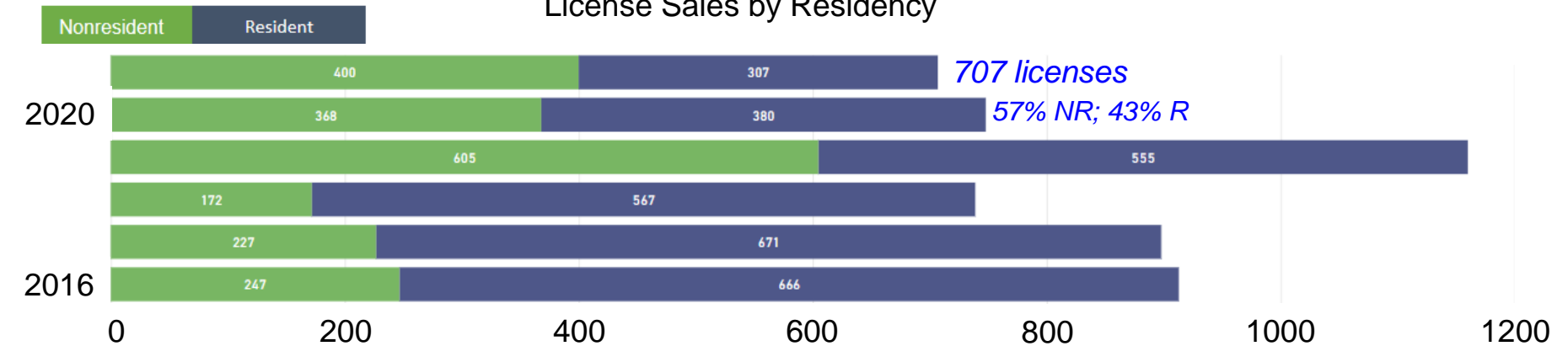
Units shaded the same color are part of the same unit grouping for rifle over-the-counter licenses. See the archery, muzzleloader and rifle tables.

BEAR - OTC Archery & Muzzleloader

License Sales by Residency

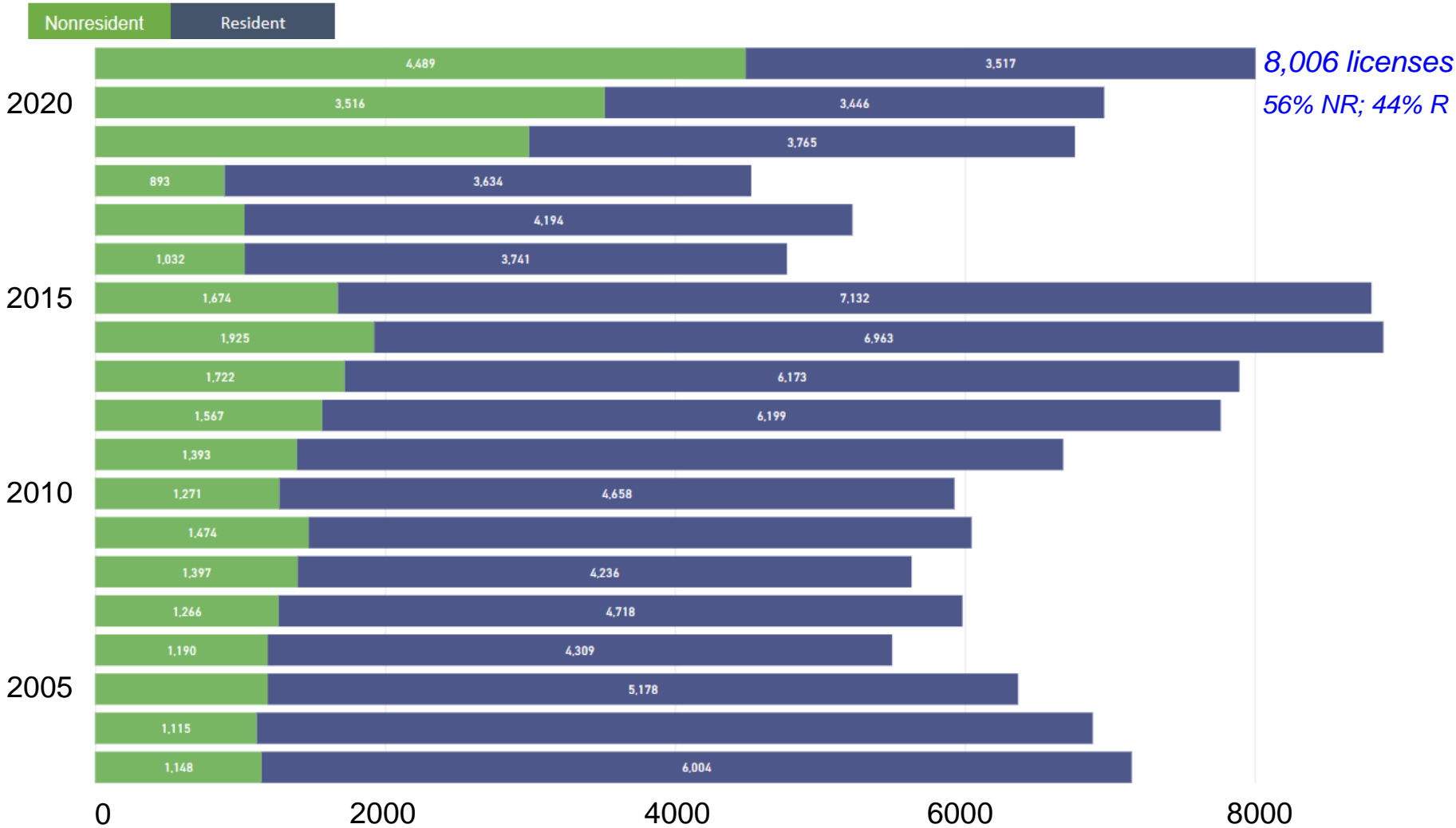


License Sales by Residency



Bear - Rifle OTC

License Sales by Residency

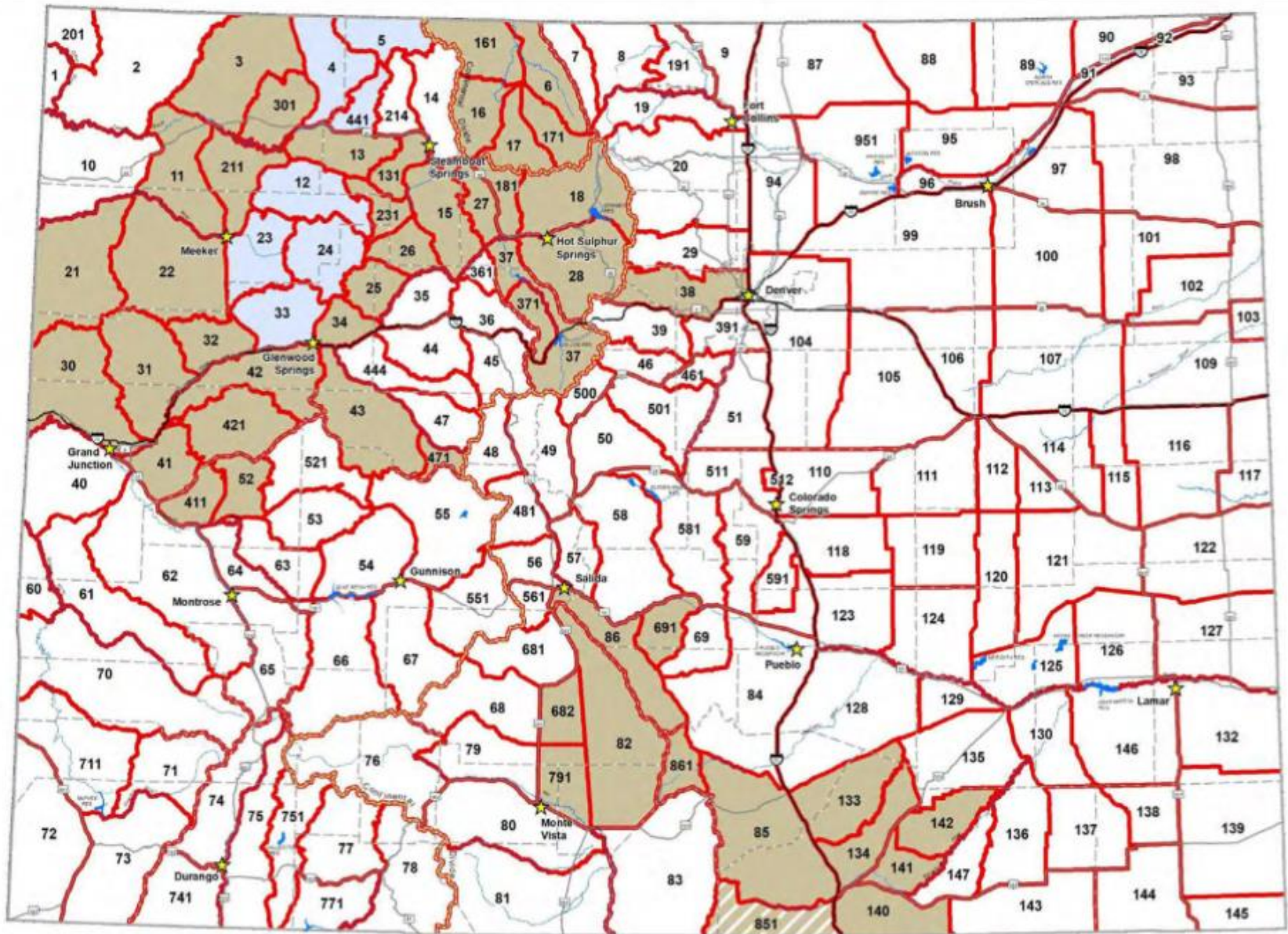


ELK

- OTC Antlerless Archery
- OTC Either-sex Archery
- OTC Antlered 2nd and 3rd Rifle
- OTC Either-sex Rifle Plains
- OTC Antlered Rifle Unit 128



LIVE LIFE
OUTSIDE



**2022 OTC Archery Licenses
Valid Units for Cow Elk**



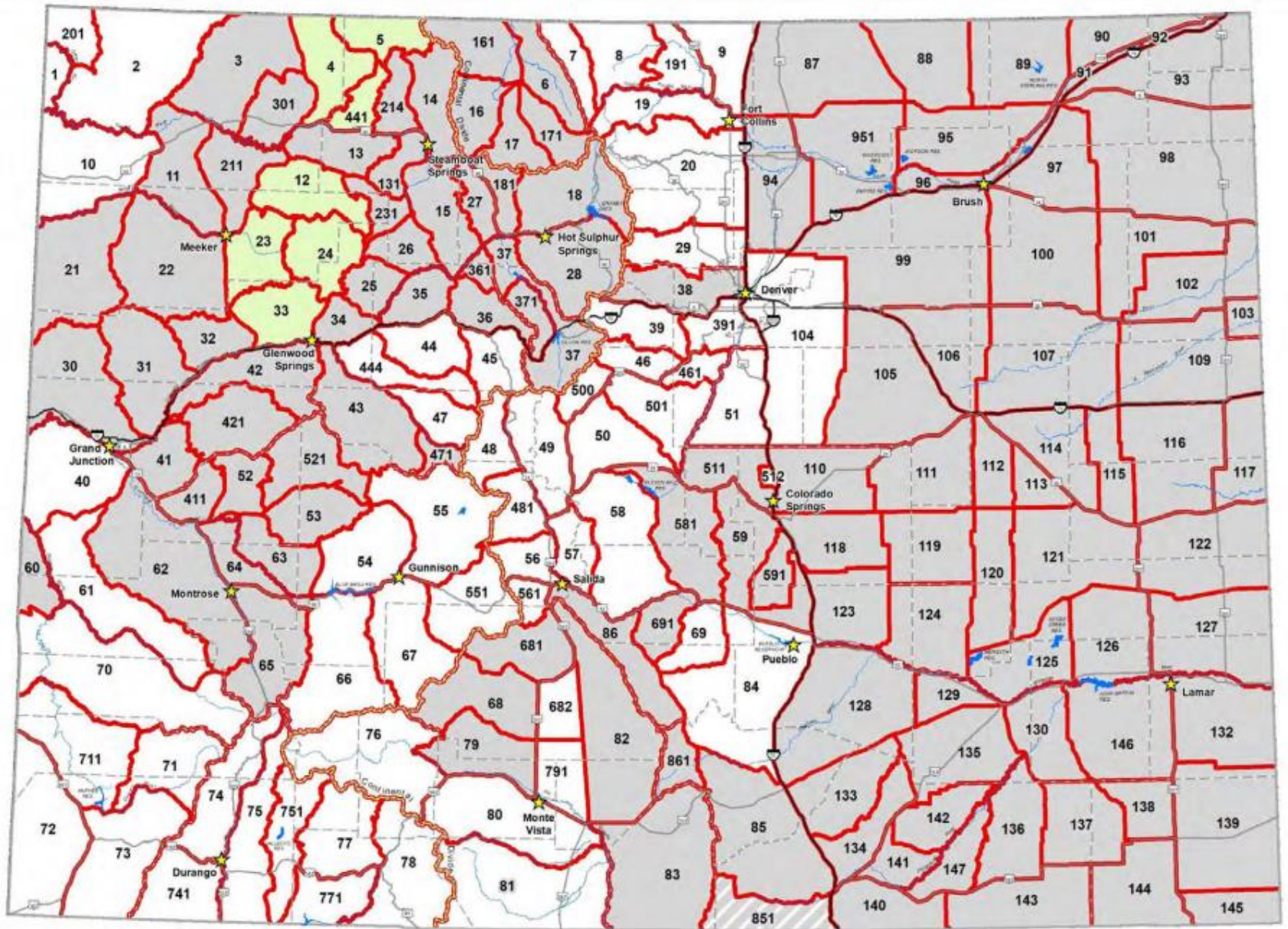
★ CPW offices

Valid Units

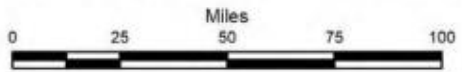
Valid, Private Land Only

Except Bosque del Oso SWA

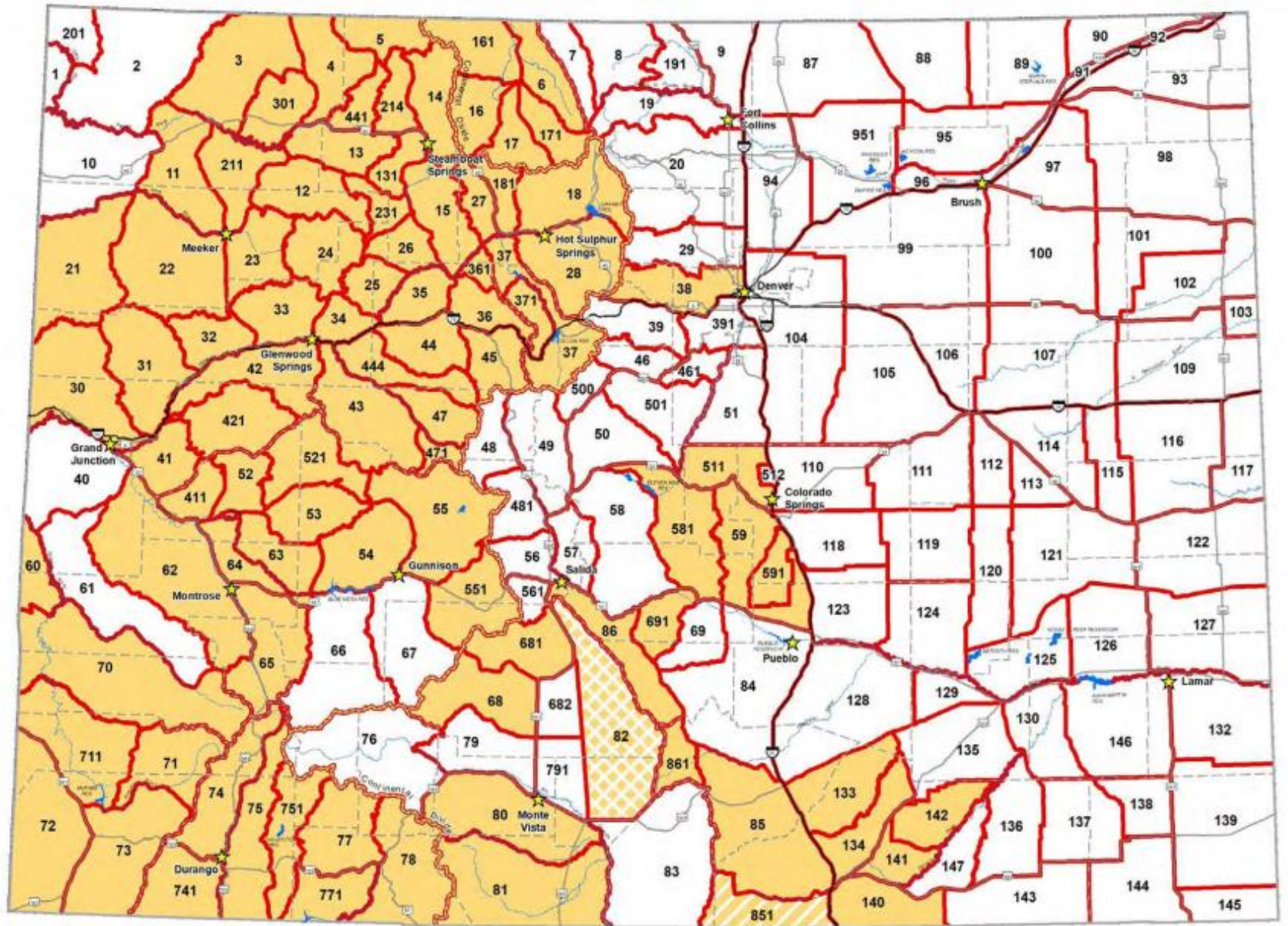
No OTC licenses available



2022 OTC Archery Either-Sex Elk



- ★ CPW offices
- Valid Units
- Valid, Private Land Only
- Except Bosque del Oso SWA
- No OTC licenses available



**2022 OTC Rifle Licenses - Valid Elk Units
Second and Third Seasons**



★ CPW offices

Valid 2nd and 3rd season, for bull elk

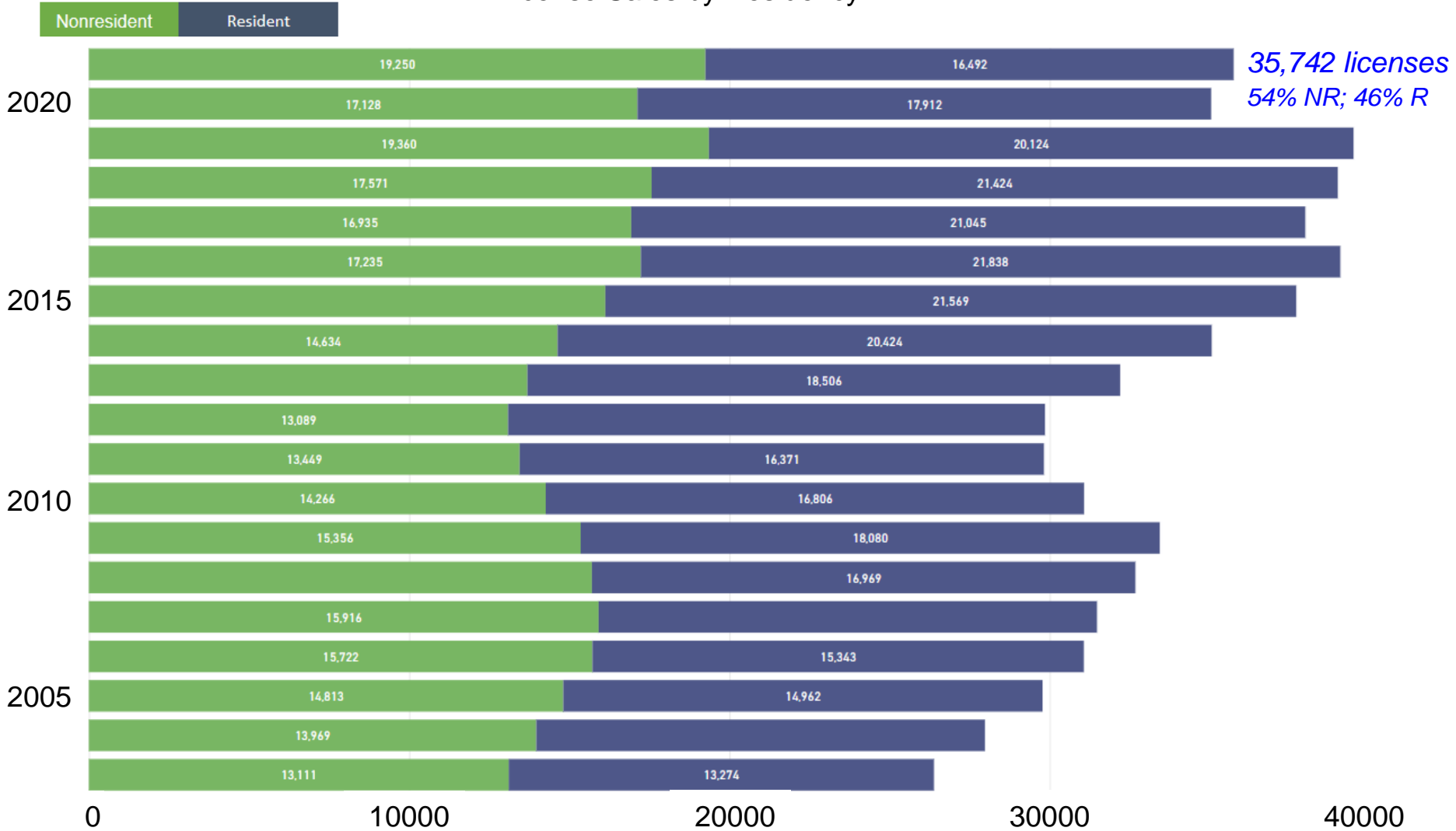
Valid 2nd and 3rd season, except Bosque del Oso SWS

Valid 2nd and 3rd season, public land only

No OTC licenses available

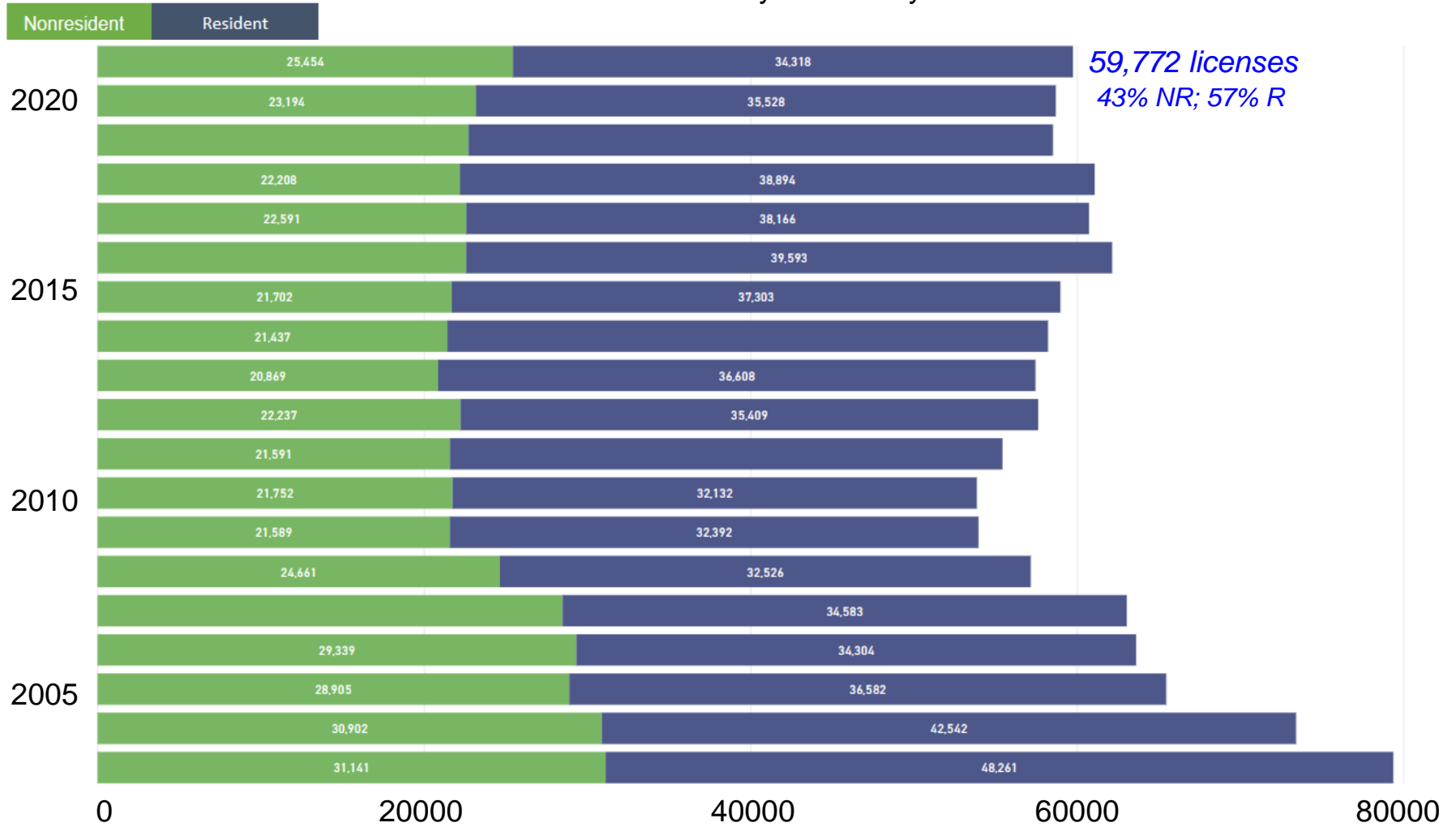
ELK - OTC Archery

License Sales by Residency



ELK - OTC Rifle 2nd & 3rd

License Sales by Residency



LIVE LIFE
OUTSIDE

Other Western States - OTC?

- Unlimited OTC uncommon for Nonresidents
- License distribution varies - continues to evolve

UTAH Elk

General-season bull elk

Available beginning July 12, 2022 at 8:00 a.m.

Available to Residents and Nonresidents

Hunt number	Hunt name	Weapon	Season dates	Number available
EB1005	Hunter's choice bull elk	Archery	Spike: Aug. 20–Sept. 9, 2022 Any bull: Aug. 20–Sept. 21, 2022	Not limited

Available beginning July 14, 2022 at 8:00 a.m.

Hunt number	Hunt name	Weapon	Season dates	Number available
EB1001	Any-bull units	Any legal weapon/	Any legal weapon: Oct. 8–Oct. 20, 2022 Muzzleloader: Nov. 2–Nov. 10, 2022	17,500*
EB1002		Muzzleloader/		
EB1008		Multi-season	Multi-season: Aug. 20–Sept. 21, Oct. 8–Oct. 20, Nov. 2–Nov. 10, 2022	

*Unlimited for youth (17 years old or younger as of July 31, 2022)

Available beginning July 26, 2022 at 8:00 a.m.

Hunt number	Hunt name	Weapon	Season dates	Number available
EB1003	Spike-only units	Any legal weapon/	Any legal weapon: Oct. 8–Oct. 20, 2022 Muzzleloader: Nov. 2–Nov. 10, 2022	15,000
EB1004		Muzzleloader/		
EB1009		Multi-season	Multi-season: Aug. 20–Sept. 9, Oct. 8–Oct. 20, Nov. 2–Nov. 10, 2022	



LIVE LIFE
OUTSIDE

Wyoming Elk

General Elk

Res OTC/Nonresident Draw



Idaho Elk

Res OTC/Nonresident OTC w/ cap
(12,815 licenses for 2022)

ADULT NONRESIDENTS ARE LIMITED FOR GENERAL SEASON ELK, REGULAR DEER AND WHITE-TAILED DEER TAGS

Nonresident hunting licenses go on sale at midnight MST, **Dec. 1** for the upcoming year, followed by nonresident deer and elk tags sold starting at 10 a.m. MST on Dec. 1. Nonresident tags have sold out in recent years, and they can be bought online at GoOutdoorsIdaho.com, at (800) 554-8685, at Fish and Game license vendors, and at regional offices during business hours.

The number of tags available for each deer hunting unit and elk zone is available at idfg.idaho.gov/tag/quotas-nonresident.

Nonresident hunters should be aware

- You do not have to buy a hunting license in advance, but you can add it when buying a tag. If a tag is not available, a license sale will not be refunded.
- Hunters should review the most current Big Game Seasons and Rules, which are up-to-date online and know what hunting unit for a deer tag, and/or what elk zone for which you plan to buy a tag.
- Log into your customer account at GoOutdoorsIdaho.com to make sure all of your customer information is correct.
- Discounted nonresident Disabled American Veteran (DAV) tags are limited to 300 elk and 500 deer. DAV hunters must submit their qualifications to Fish and Game prior to Dec. 1. If DAV tags sell out, DAV hunters can still buy available nonresident tags at full nonresident prices.
- If nonresident tags are sold out, nonresident hunters can still apply for controlled hunts from May 1 through June 5, but you must buy a hunting license to apply.



LIVE LIFE
OUTSIDE

OTC Advantages:

- Guaranteed opportunity
- Flexibility to hunt across multiple GMUs
- No qualifying license required
- No application or draw required
- Seasons to choose from (arch, 2nd/3rd rifle, plains, etc.)
- Can still apply for limited licenses and receive preference points
- No differentiation between Resident and Nonresident
- CPW Funding / Regional Economics



LIVE LIFE
OUTSIDE

OTC Disadvantages:

- Crowding/Hunting Experience
- Animal distribution
- Average success rates tend to be low
- Contribute to Preference Point creep
- Less overall management control & precision (eg. Sex Ratios)
- No differentiation between Resident and Nonresident



LIVE LIFE
OUTSIDE

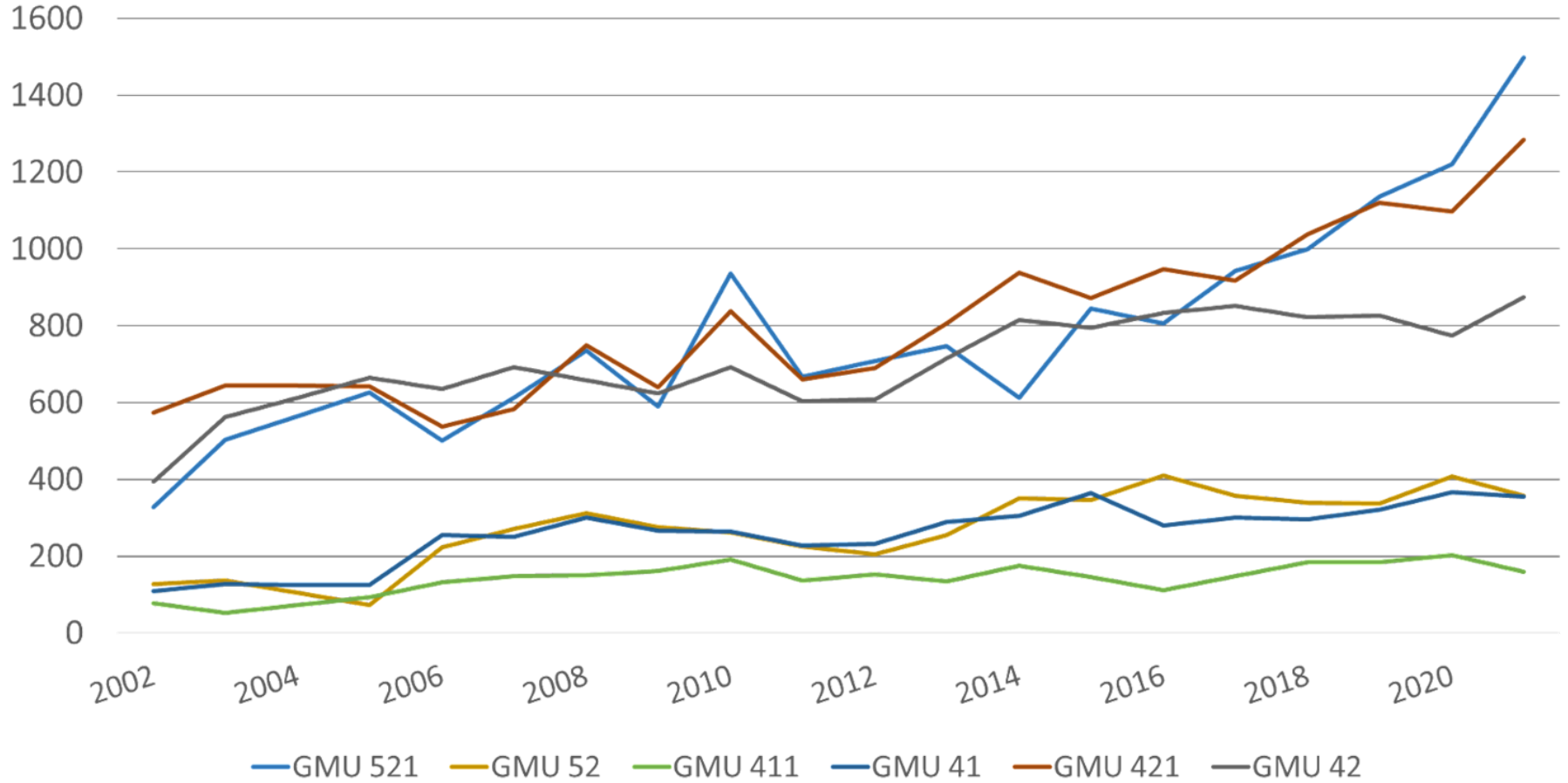
Crowding/Hunting Experience?



- Diverse opinions, but ongoing issue of concern
- Can our big game populations sustain increasing OTC participation over time?
- Can we sustain hunter satisfaction over time if OTC participation increases?
- Other Western State Distribution & Allocation?



E14 ES OTC Archery Hunter Numbers by GMU



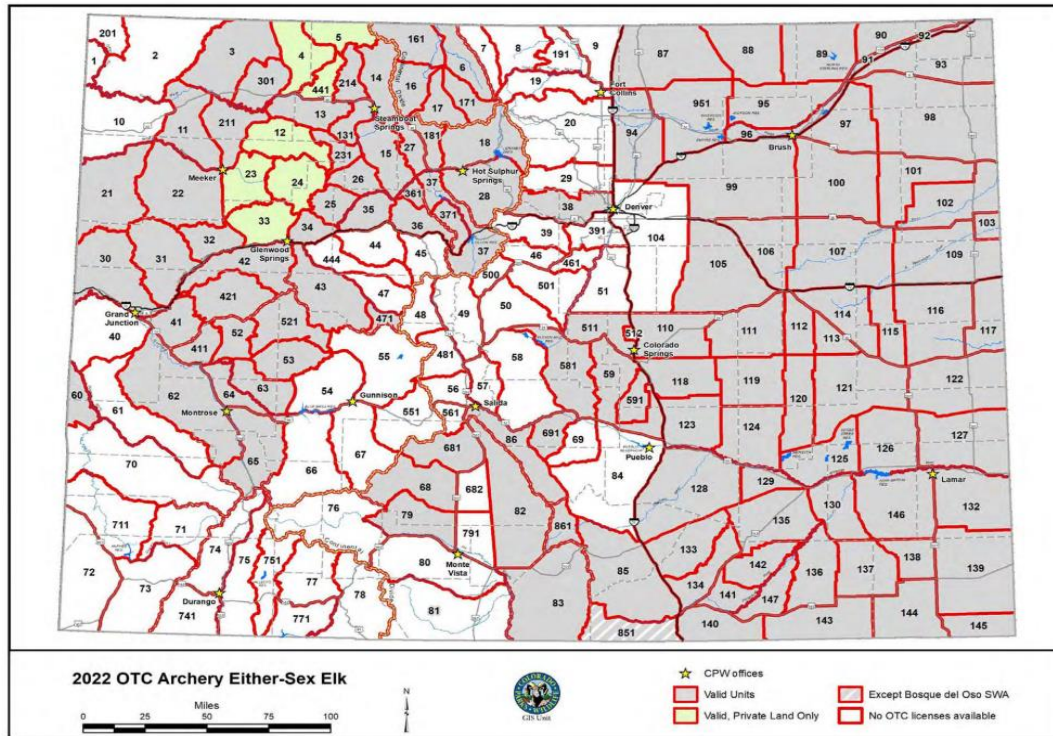
LIVE LIFE
OUTSIDE

2020-2024 Big Game Season Structure

Finalized by the Parks and Wildlife Commission - July 2019
Amended by the Parks and Wildlife Commission - November 2019

Archery - Deer and Elk Season Structure West of 1-25 and GMU 140:

- ELK- Unlimited either-sex, antlered, and antlerless archery elk licenses are available in certain units. **Either-sex and sex-specified archery elk licenses can be limited geographically to meet biological or social management objectives.** Over-the-Counter (OTC) List B archery elk antlerless licenses are only valid in units that also have List B rifle elk antlerless licenses



Animal Distribution?

- Hunting pressure influences animal distribution
 - Other land uses do too
- How to hold elk on public lands?
 - Public access
 - Management objectives
 - Game damage mitigation
- Use of preferred habitats/maximize body condition



LIVE LIFE
OUTSIDE

OTC Elk

Population Management Considerations?

- Rifle OTC focused on male segment of population
 - ample opportunity, sustainable off-take, minimal population level effect
- 4-point antler restriction helps maintain desired sex ratios
- OTC Archery (Either-sex & Antlerless)
 - Cow harvest should be compatible with Herd Management Plan objectives
 - Early season hunting pressure?
 - Rut behavior
 - Declining cow:calf ratios
 - On-going Research
- Influence of OTC pressure on success rates across seasons
 - Achieving management objectives?
 - Elk distribution
- High bull harvest years - maintaining sex ratio objective?



LIVE LIFE
OUTSIDE

Landowner Preference Program (LPP) & Over-the-Counter?

-LPP has been part of collective discussions related to license distribution

-Some constituents have expressed support for total limitations, but are concerned with LPP mandates



LIVE LIFE
OUTSIDE

Top OTC Ideas from Public Focus Groups...

- Eliminate or cap all over-the counter (OTC) licenses for residents and nonresidents
- Eliminate or cap OTC licenses for nonresidents
- Status Quo (preferred by nonresidents)



LIVE LIFE
OUTSIDE



LIVE LIFE
OUTSIDE

Questions???