

# Deer, Elk, Pronghorn, and Moose Limited License Recommendations and State of the Herds Update

Andy Holland - Big Game Manager  
Colorado Parks and Wildlife



LIVE LIFE  
OUTSIDE

# Overview

- Limited license recommendations
  - 248,000 limited licenses (-2,600, -1%)
  - 2,600 hunt quotas
- 800,000 total deer, elk, pronghorn, and moose
  - 136 herds or Data Analysis Units (DAUs)
- Acknowledgments



LIVE LIFE  
OUTSIDE

# Tiered Approach of Presenting Recommendations

- This presentation (most general)
  - Statewide summary by species
  - Highlighting select Regional and DAU specific changes
- Commission Mailing
  - Letter to Commission
  - Summary by Region and Species Table
  - Species specific tables
    - DAU level summary
  - Chapter 2, recommended quotas for all 2,600 hunts (most detailed)



LIVE LIFE  
OUTSIDE

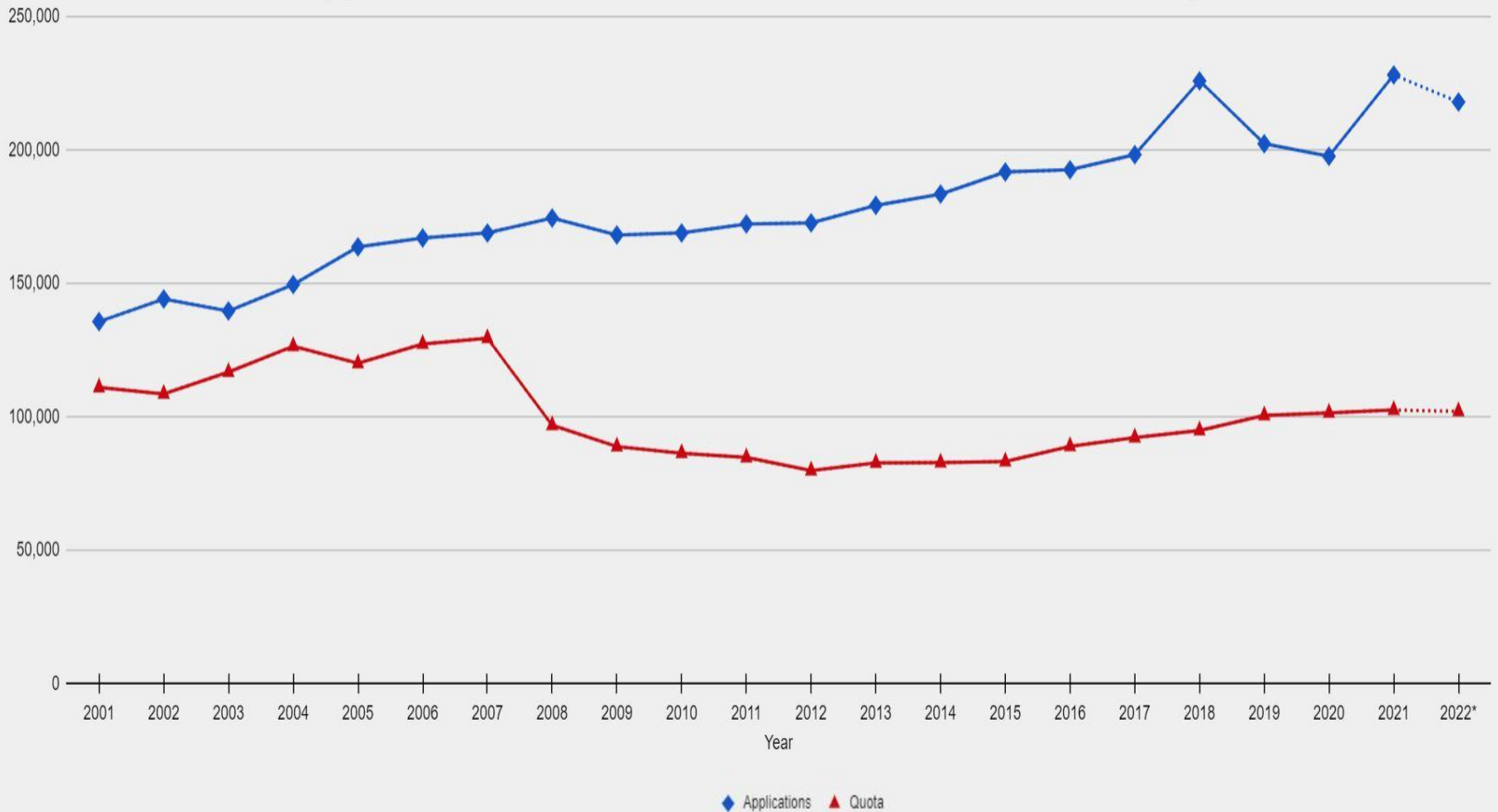
# Information Supporting Recommendations

- Herd Management Plan (HMP) objectives
- Herd performance and trends
  - Age and sex classification data
  - Survival rates
  - Population estimates
  - Chronic wasting disease
  - Field observations
  - Public input and reports
- Past licensing trends
- Previous year's harvest



LIVE LIFE  
OUTSIDE

# Deer Applications and Limited License for Established Hunts Quotas By Year



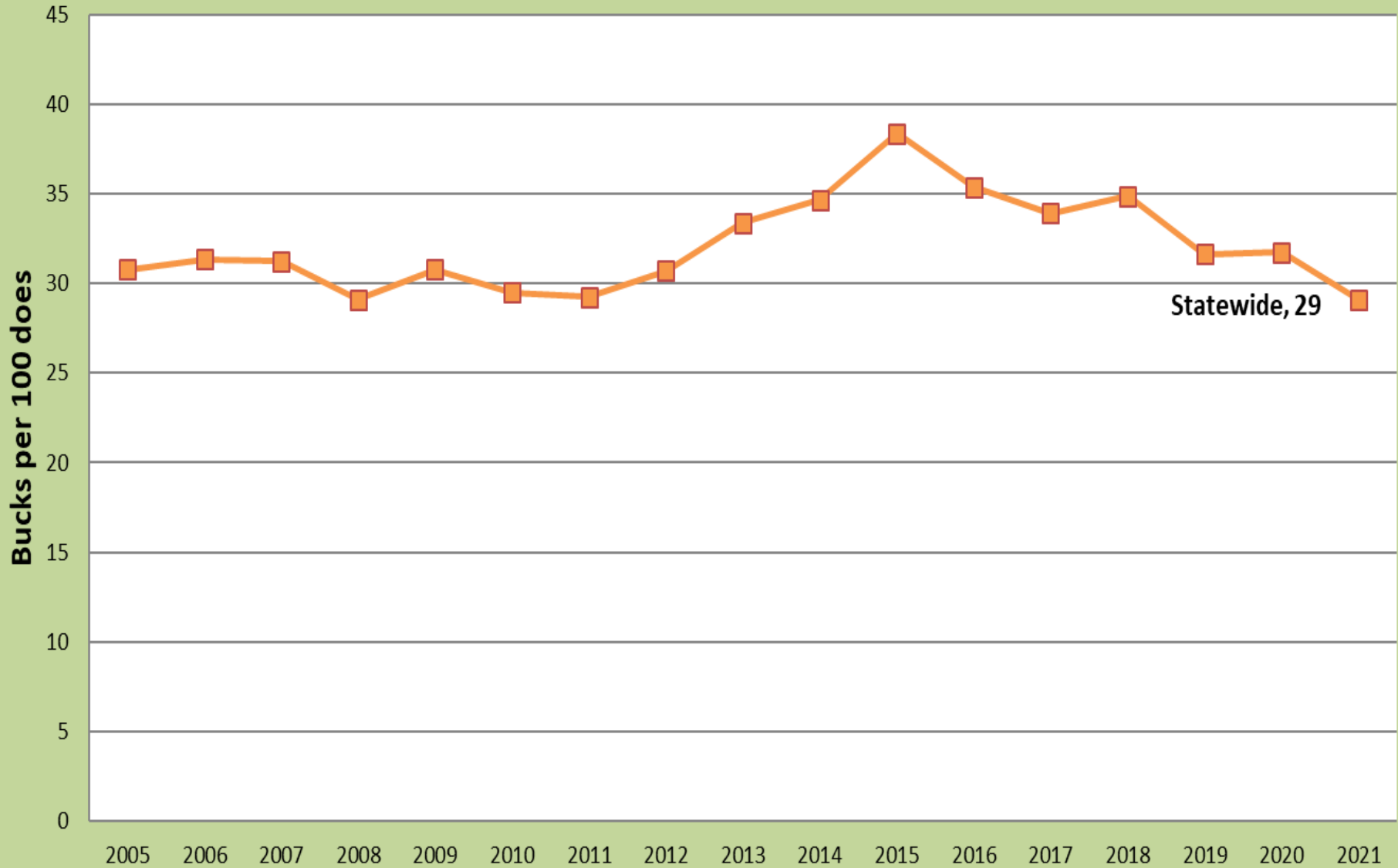
	2001	2002	2003	2004	2005	2006	2007	2008	2009	2010	2011	2012	2013	2014	2015	2016	2017	2018	2019	2020	2021	2022*
Applications	135,631	144,122	139,629	149,532	163,636	166,993	168,862	174,465	168,107	168,862	172,234	172,650	179,182	183,431	191,708	192,538	198,205	225,855	202,305	197,604	228,087	217,937
License Quota	110,944	108,567	116,742	126,410	120,005	127,257	129,426	96,791	88,820	86,328	84,713	79,813	82,680	82,806	83,204	88,919	92,187	94,855	100,483	101,457	102,507	102,007

\*Projected Estimate

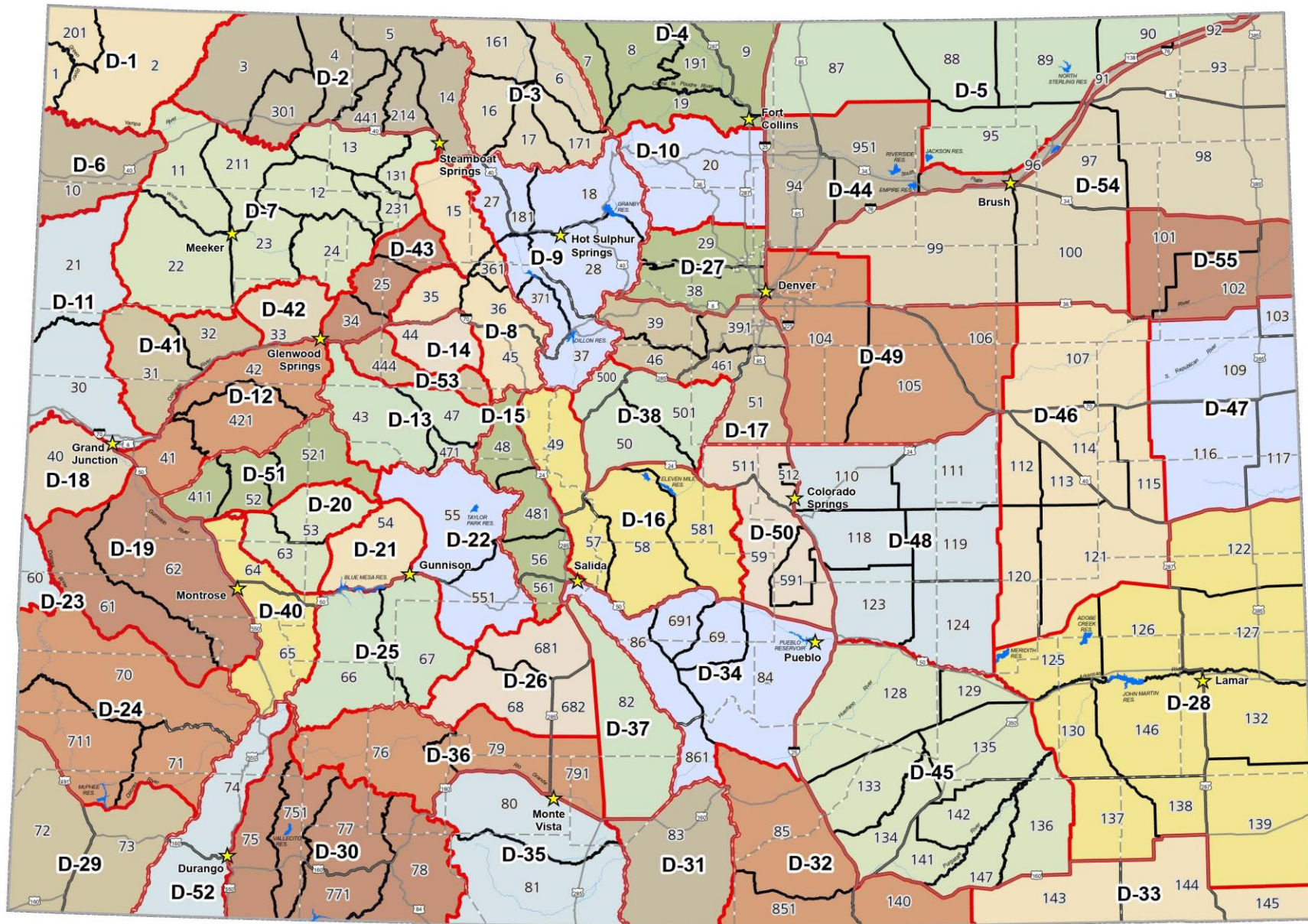


LIVE LIFE  
OUTSIDE

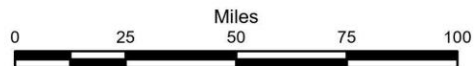
# Statewide Average of Post-hunt Deer Buck/Doe Ratios 2005-2021



LIVE LIFE  
OUTSIDE



## 2022 Deer DAU and GMU



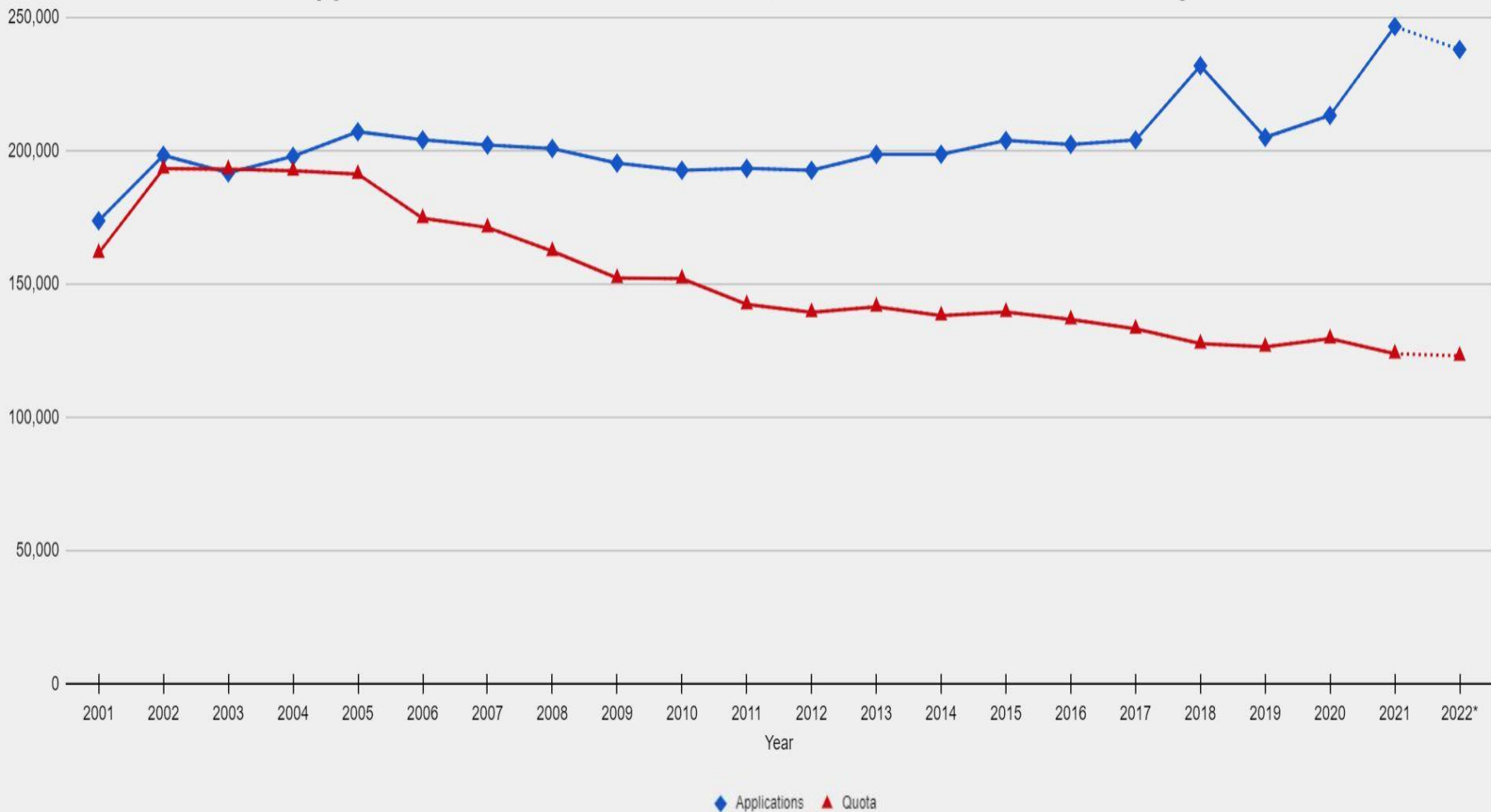
April 2022

★ CPW Office

□ GMU (Game Management Unit) Boundary

□ DAU (Data Analysis Unit) Boundary

# Elk Applications and Limited License Quotas for Established Hunts By Year



	2001	2002	2003	2004	2005	2006	2007	2008	2009	2010	2011	2012	2013	2014	2015	2016	2017	2018	2019	2020	2021	2022*
Applications	173,730	198,245	191,714	197,866	207,108	204,074	202,111	200,826	195,332	192,655	193,380	192,638	198,621	198,649	203,823	202,364	204,024	231,846	204,984	213,230	246,602	237,959
License Quota	161,606	193,245	193,049	192,474	191,249	174,663	171,210	162,303	152,214	152,012	142,347	139,397	141,483	138,186	139,482	136,706	133,199	127,608	126,458	129,532	123,866	123,053

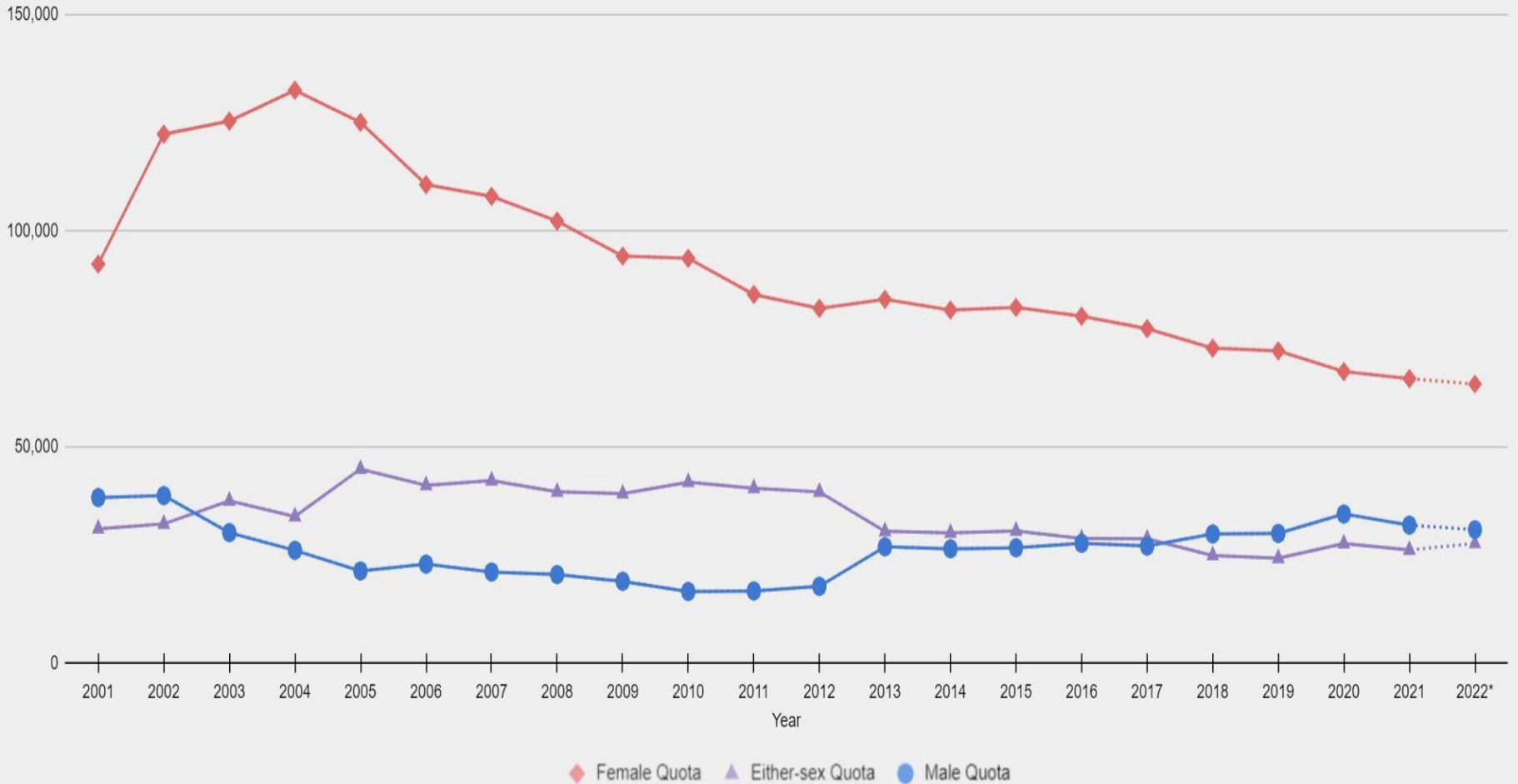
\*Projected Estimate



**LIVE LIFE  
OUTSIDE**



# Elk Limited License Quotas for Established Hunts by Sex and Year

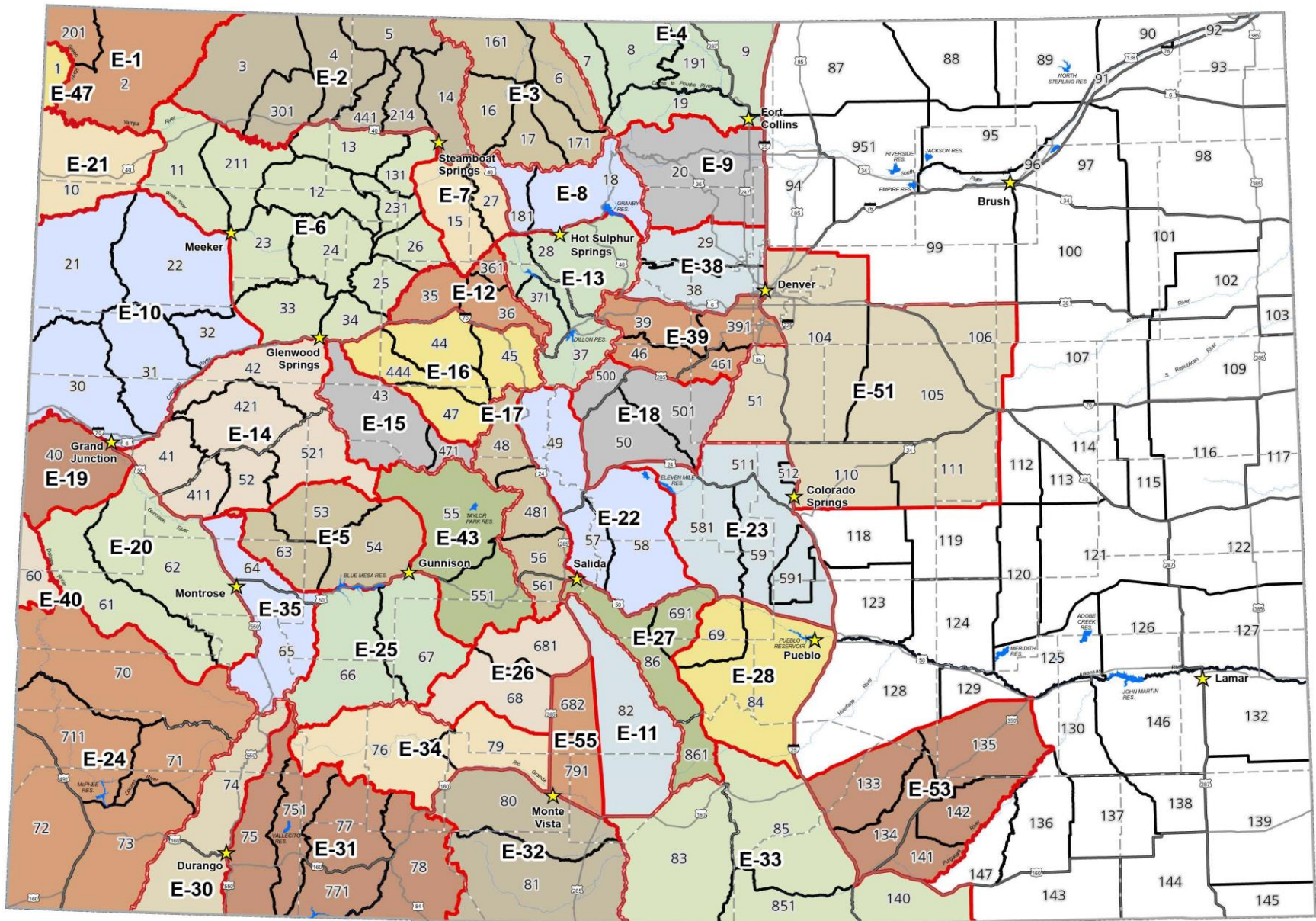


	2001	2002	2003	2004	2005	2006	2007	2008	2009	2010	2011	2012	2013	2014	2015	2016	2017	2018	2019	2020	2021	2022*
Female Quota	92,276	122,329	125,339	132,489	125,062	110,657	107,938	102,221	94,136	93,599	85,246	82,049	84,118	81,657	82,247	80,209	77,353	72,843	72,224	67,424	65,785	64,526
Either-sex Quota	31,058	32,185	37,537	33,905	44,875	41,117	42,212	39,615	39,168	41,853	40,411	39,593	30,470	30,097	30,571	28,798	28,777	24,901	24,245	27,639	26,177	27,663
Male Quota	38,272	38,731	30,173	26,080	21,312	22,889	21,060	20,467	18,910	16,560	16,690	17,755	26,895	26,432	26,664	27,699	27,069	29,864	29,989	34,469	31,904	30,864

\*Projected Estimate



**LIVE LIFE  
OUTSIDE**



### 2022 Eik DAs and GMU



GIS Unit  
April 2022

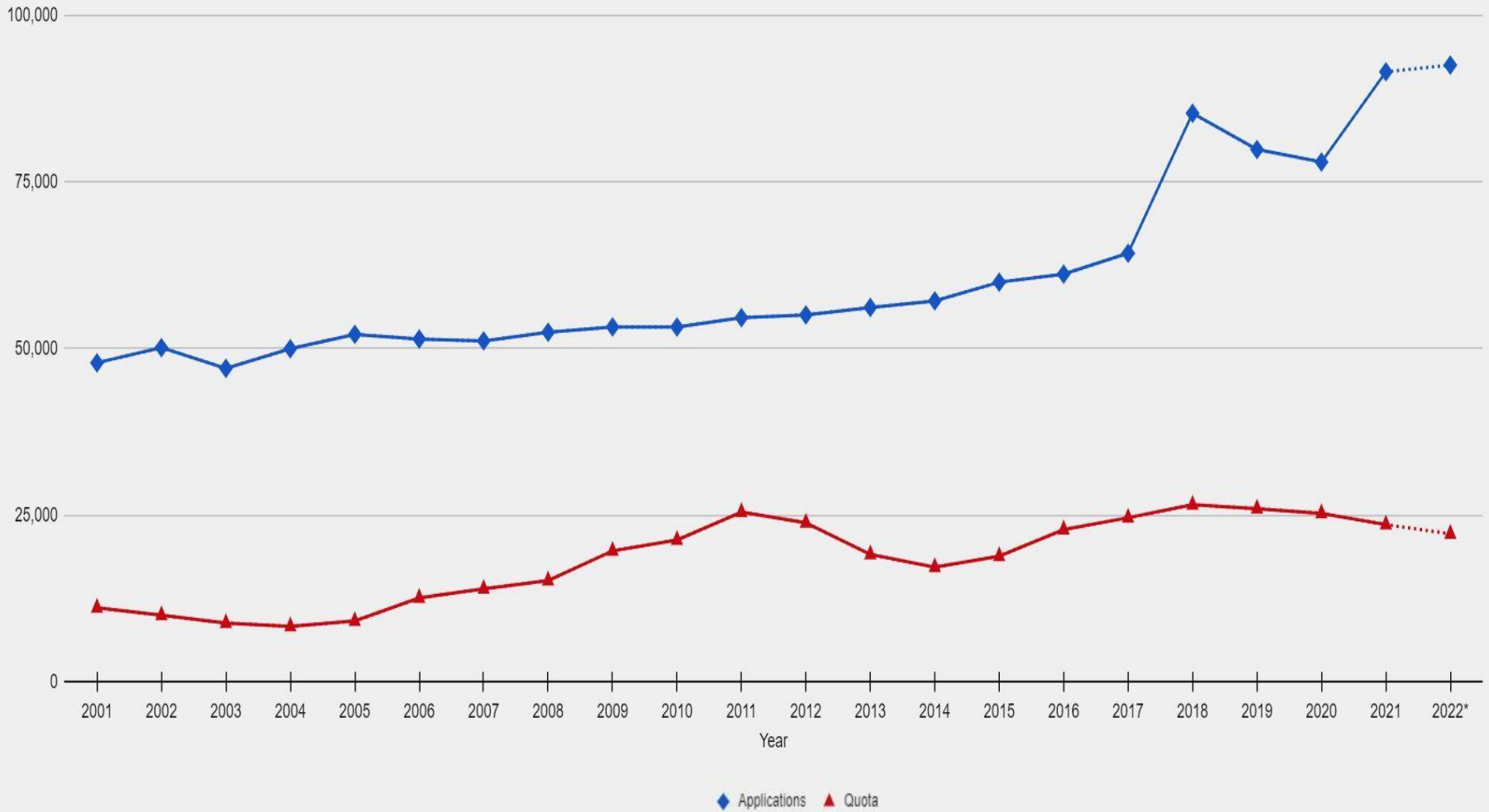
★ CPW Office

□ GMU (Game Management Unit) Boundary

□ DAs (Data Analysis Unit) Boundary



# Pronghorn Applications and Limited License Quotas for Established Hunts By Year



	2001	2002	2003	2004	2005	2006	2007	2008	2009	2010	2011	2012	2013	2014	2015	2016	2017	2018	2019	2020	2021	2022*
Applications	47,869	50,144	47,043	49,977	52,136	51,426	51,149	52,456	53,252	53,242	54,647	55,065	56,174	57,163	59,968	61,178	64,309	85,317	79,886	78,007	91,540	92,554
License Quota	11,097	9,980	8,802	8,314	9,116	12,573	13,957	15,196	19,651	21,286	25,454	23,866	19,113	17,202	18,853	22,844	24,625	26,563	25,981	25,278	23,596	22,195

\*Projected Estimate



**LIVE LIFE  
OUTSIDE**

# Pronghorn Rifle Quota by Sex

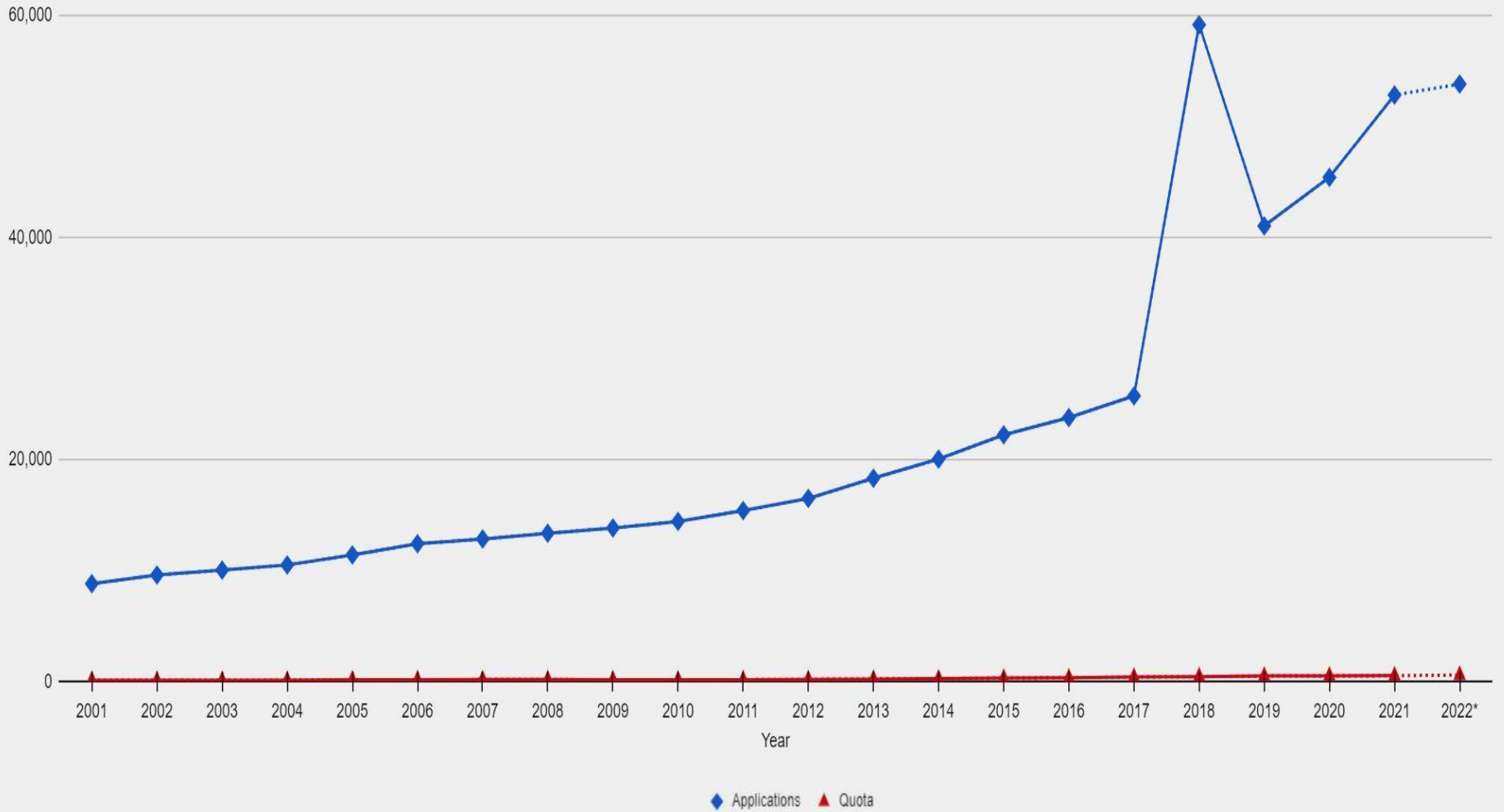
Either-sex Buck Doe



LIVE LIFE  
OUTSIDE



# Moose Applications and Limited License Quotas for Established Hunts By Year



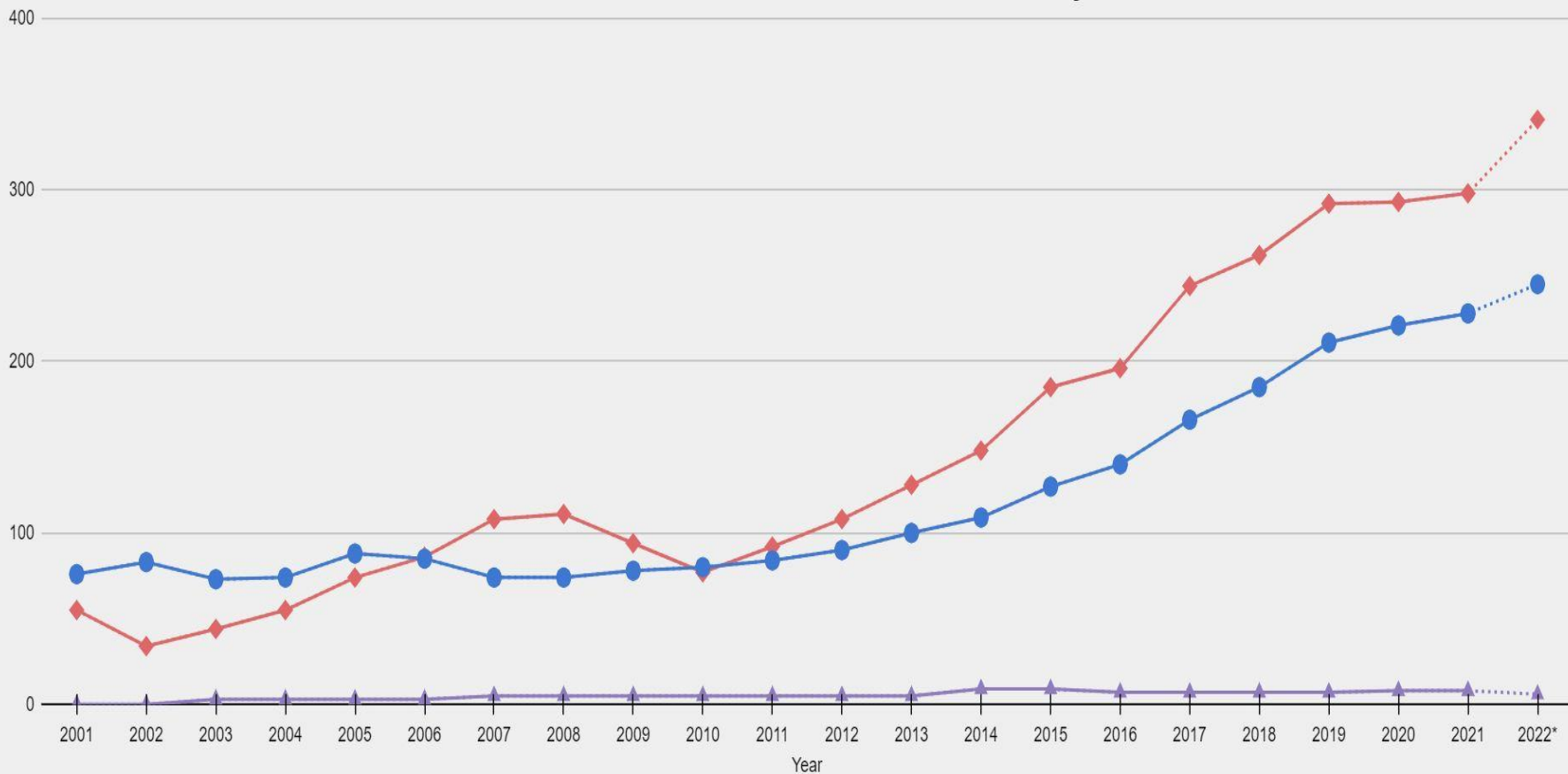
	2001	2002	2003	2004	2005	2006	2007	2008	2009	2010	2011	2012	2013	2014	2015	2016	2017	2018	2019	2020	2021	2022*
Applications	8,815	9,600	10,044	10,504	11,412	12,417	12,842	13,361	13,836	14,425	15,404	16,494	18,311	20,037	22,226	23,776	25,728	59,157	41,037	45,412	52,823	53,808
License Quota	131	117	120	132	165	174	187	190	177	162	181	203	233	266	321	343	417	454	510	522	534	592

\*Projected Estimate



**LIVE LIFE  
OUTSIDE**

# Moose Limited License Quotas for Established Hunts by Sex and Year



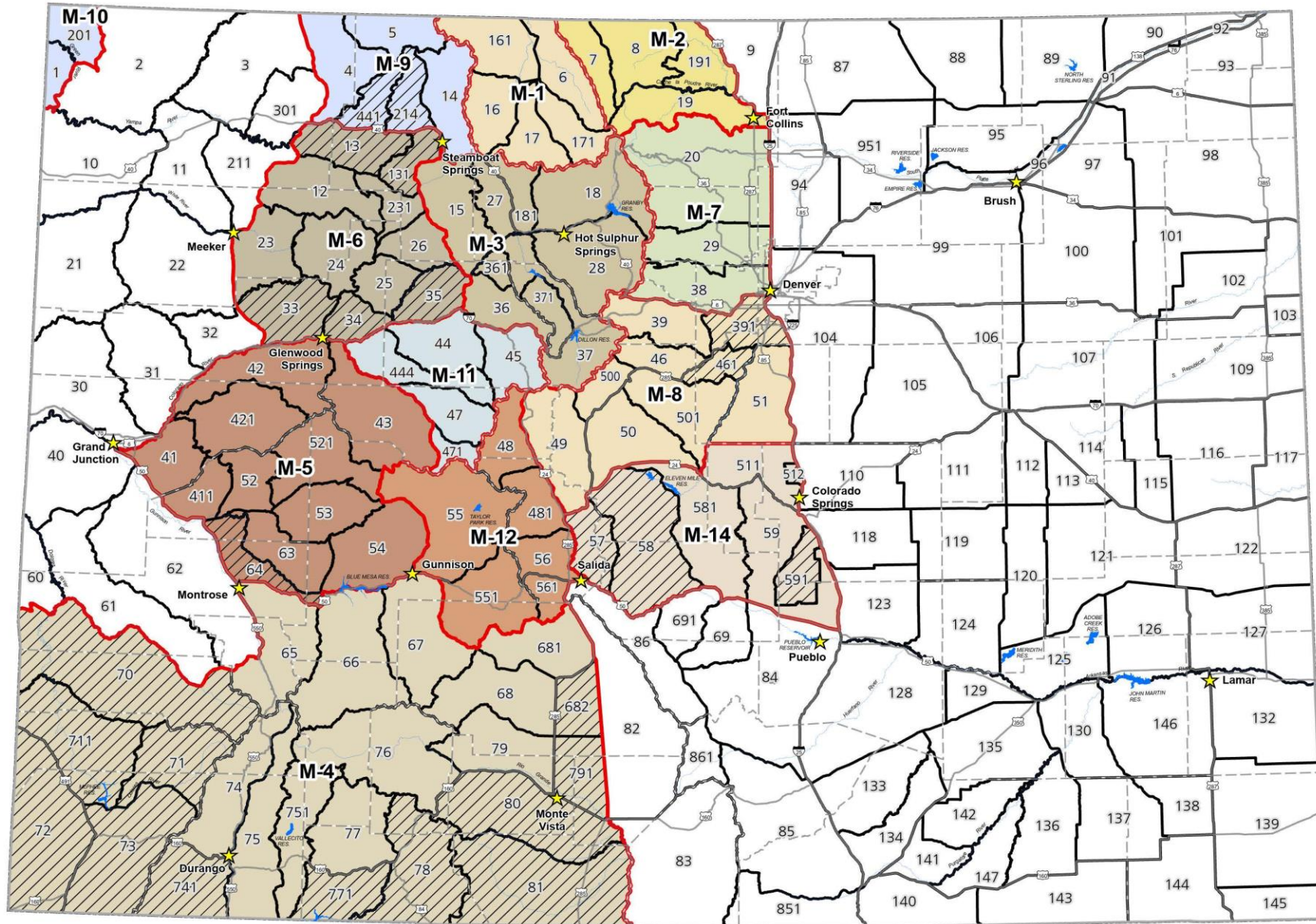
◆ Female Quota ▲ Either-sex Quota ● Male Quota

	2001	2002	2003	2004	2005	2006	2007	2008	2009	2010	2011	2012	2013	2014	2015	2016	2017	2018	2019	2020	2021	2022*
Female Quota	55	34	44	55	74	86	108	111	94	77	92	108	128	148	185	196	244	262	292	293	298	341
Either-sex Quota	0	0	3	3	3	3	5	5	5	5	5	5	5	9	9	7	7	7	7	8	8	6
Male Quota	76	83	73	74	88	85	74	74	78	80	84	90	100	109	127	140	166	185	211	221	228	245

\*Projected Estimate



**LIVE LIFE  
OUTSIDE**



## 2022 Moose DAU and GMU



GIS Unit  
April 2022

- ★ CPW Office
- GMU (Game Management Unit) Boundary
- ▭ DAU (Data Analysis Unit) Boundary
- ▨ Non-Hunted GMUs



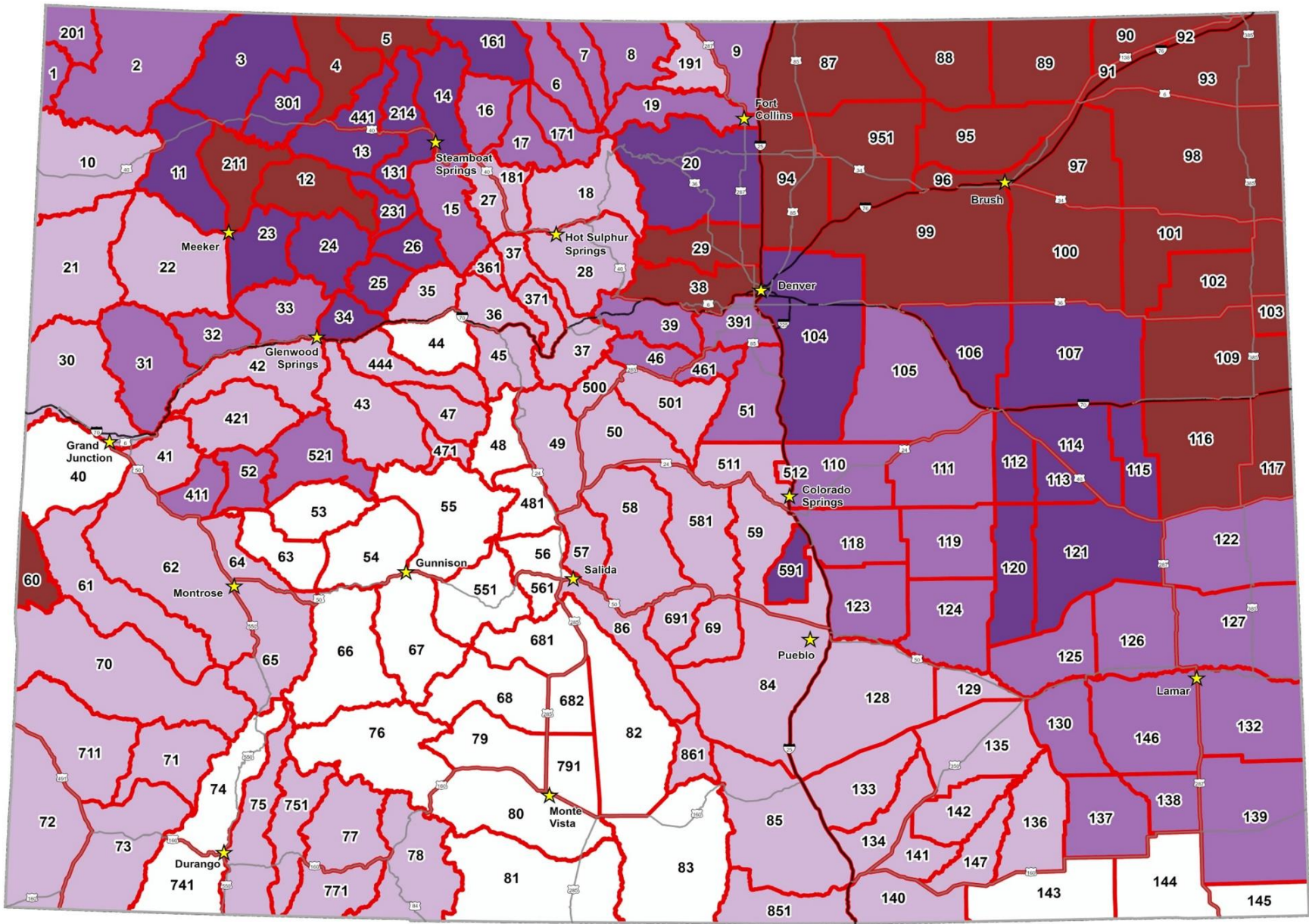
# Questions and Discussion



Copyright © 2012 DJHannigan.com



LIVE LIFE  
OUTSIDE



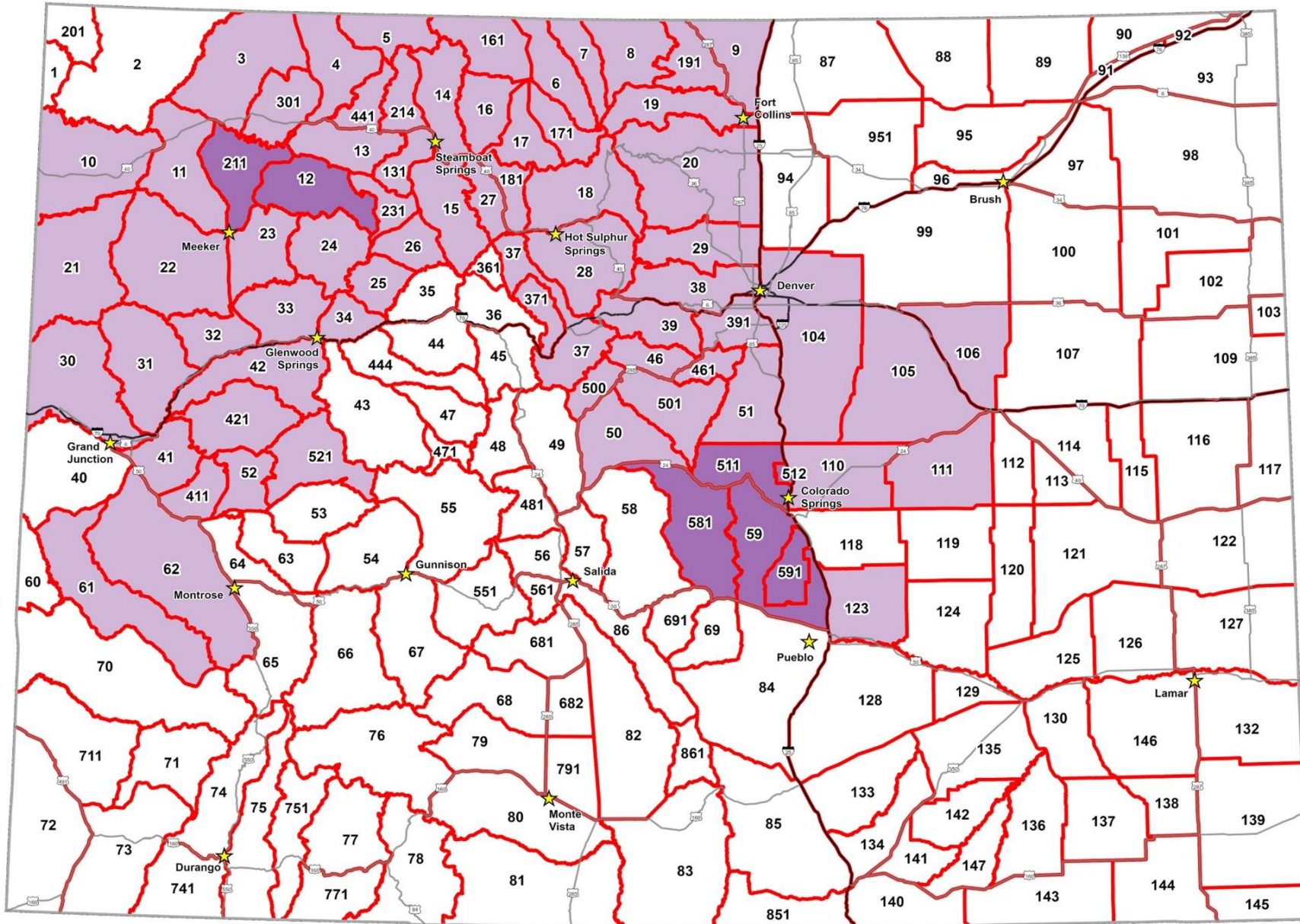
**Detected CWD in Harvested Adult Deer Bucks**

January 2022

**Estimated CWD Infection Rates for Harvest Data in Colorado 2017 - 2021**



- Not Detected
- Detected under 5%
- Detected over 20%
- Detected 5-10%
- Detected 10-20%



**Detected CWD in Harvested Adult & Yearling Elk**

January 2022

**Estimated CWD Infection Rates  
for Harvest Data in Colorado  
2017 - 2021**



- Not Detected
- Detected under 5%
- Detected 5-10%