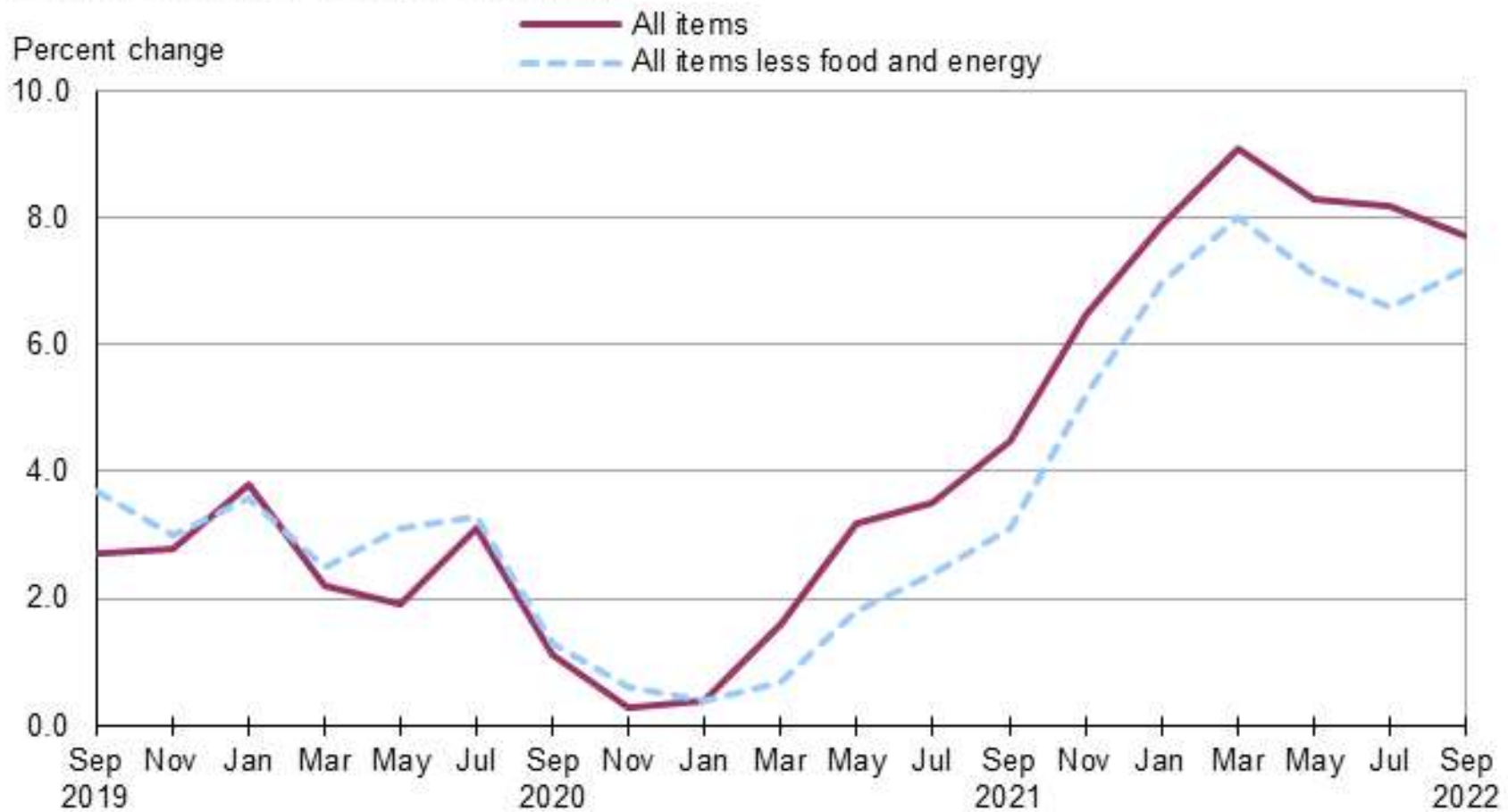


November, 2022

Colorado Parks and Wildlife Inflation Information

(b) For a fee or surcharge described in articles 1 to 6 of this title 33, the commission may, by rule, adjust the fee or surcharge by an amount up to the total amount reflected by the annual percentage change in the United States department of labor's bureau of labor statistics consumer price index for Denver-Aurora-Lakewood for all items and all urban consumers, or its applicable predecessor or successor index. The adjustment is not effective until the commission notifies the joint budget committee of the adjustment.

Chart 1. Over-the-year percent change in CPI-U, Denver-Aurora-Lakewood, CO, September 2019–September 2022



Source: U.S. Bureau of Labor Statistics.



— Producer Price Index by Industry: Industrial Gas Manufacturing: Oxygen



Shaded areas indicate U.S. recessions.

Source: U.S. Bureau of Labor Statistics

fred.stlouisfed.org





Average Price: Electricity per Kilowatt-Hour in Denver-Aurora-Lakewood, CO (CBSA)



Shaded areas indicate U.S. recessions.

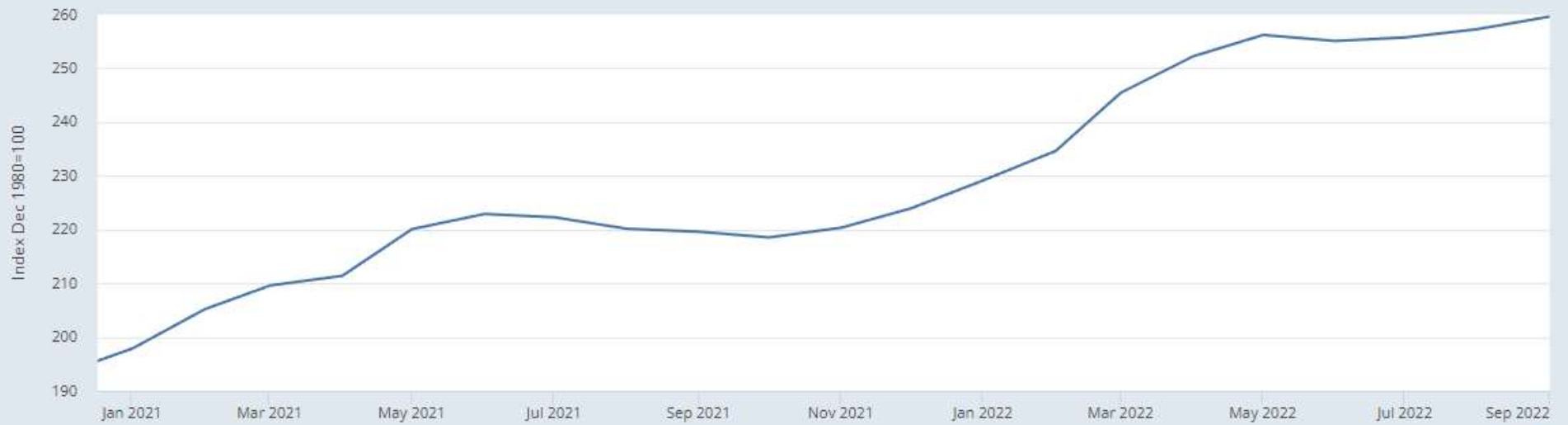
Source: U.S. Bureau of Labor Statistics

fred.stlouisfed.org





— Producer Price Index by Industry: Other Animal Food Manufacturing



Shaded areas indicate U.S. recessions.

Source: U.S. Bureau of Labor Statistics

fred.stlouisfed.org



FRED

— US Regular All Formulations Gas Price



Shaded areas indicate U.S. recessions.

Source: U.S. Energy Information Administration

fred.stlouisfed.org





— Producer Price Index by Commodity: Fuels and Related Products and Power: Propane



Shaded areas indicate U.S. recessions.

Source: U.S. Bureau of Labor Statistics

fred.stlouisfed.org





— Producer Price Index by Industry: Building Material and Supplies Dealers



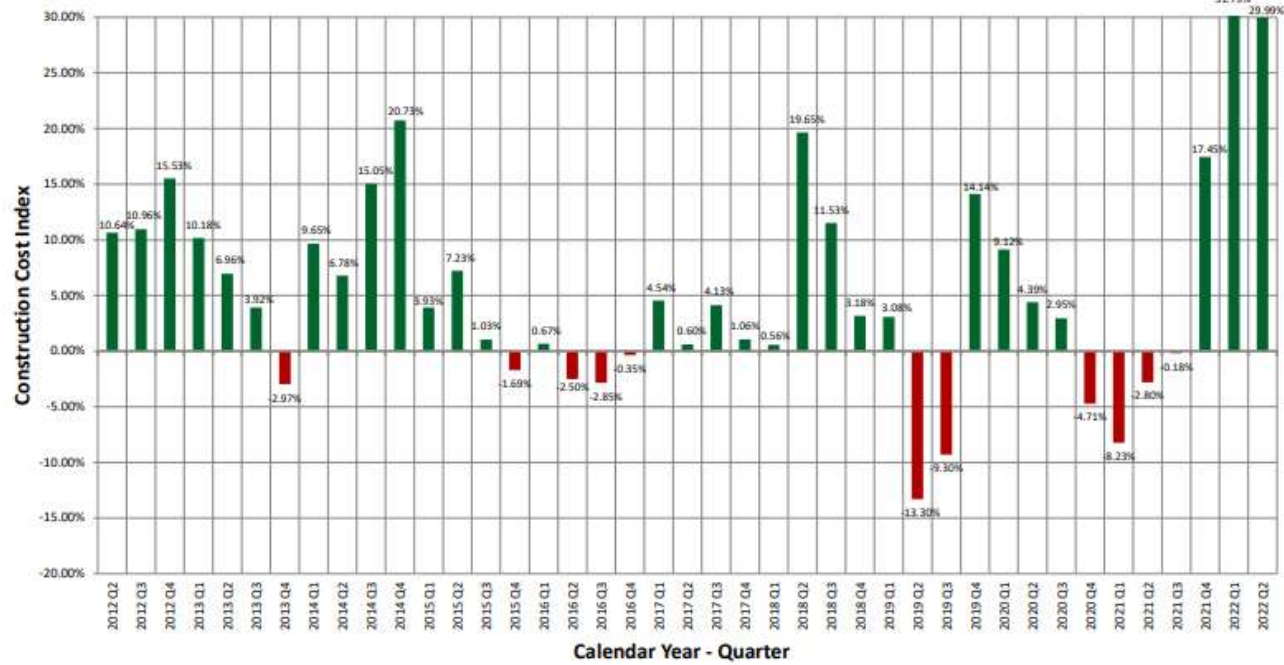
Shaded areas indicate U.S. recessions.

Source: U.S. Bureau of Labor Statistics

fred.stlouisfed.org

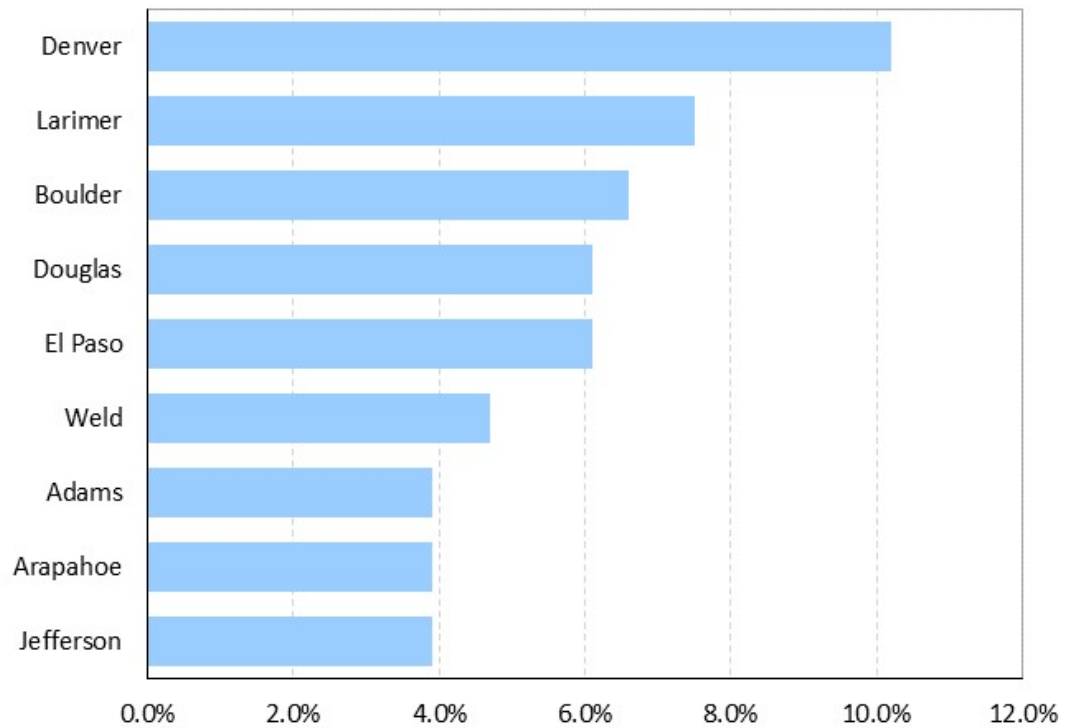


Colorado CCI - Annual Percentage Change



Calculations derived from the most recent four consecutive quarters of data compared to the previous four consecutive quarters of data.

Chart 1. Over-the-year percent change in covered employment among the largest counties in Colorado, December 2021



Source: U.S. Bureau of Labor Statistics.

Table A. Occupational employment and wages by major occupational group, United States and the Denver metropolitan area, and measures of statistical significance, May 2021

Major occupational group	Percent of total employment		Mean hourly wage		
	United States	Denver	United States	Denver	Percent difference (1)
Total, all occupations	100.0	100.0	\$28.01	\$32.09*	15
Management	6.3	5.3*	59.31	70.03*	18
Business and financial operations	6.4	9.9*	39.72	41.92*	6
Computer and mathematical	3.3	5.4*	48.01	51.15*	7
Architecture and engineering	1.7	2.7*	44.10	47.16*	7
Life, physical, and social science	0.9	1.2*	38.81	41.14*	6
Community and social service	1.6	1.6	25.94	28.08*	8
Legal	0.8	1.2*	54.38	56.15	3
Educational instruction and library	5.8	4.9*	29.88	32.79*	10
Arts, design, entertainment, sports, and media	1.3	1.5*	31.78	32.29	2
Healthcare practitioners and technical	6.2	5.3*	43.80	45.29	3
Healthcare support	4.7	3.4*	16.02	17.97*	12
Protective service	2.4	2.1*	25.68	28.48*	11
Food preparation and serving related	8.0	7.8*	14.16	16.56*	17
Building and grounds cleaning and maintenance	2.9	2.6*	16.23	18.01*	11
Personal care and service	1.8	2.1*	16.17	18.41*	14
Sales and related	9.4	11.2*	22.15	27.51*	24
Office and administrative support	13.0	11.8*	20.88	22.91*	10
Farming, fishing, and forestry	0.3	0.2*	16.70	17.93*	7
Construction and extraction	4.2	5.0*	26.87	27.03	1
Installation, maintenance, and repair	4.0	3.8	25.66	27.94*	9
Production	6.0	3.2*	20.71	22.08*	7
Transportation and material moving	9.0	8.1*	19.88	22.97*	16

(1) A positive percent difference measures how much the mean wage in the Denver-Aurora-Lakewood, CO Metropolitan Statistical Area is above the national mean wage, while a negative difference reflects a lower wage.
 * The mean hourly wage or percent share of employment is significantly different from the national average of all areas at the 90-percent confidence level.

