

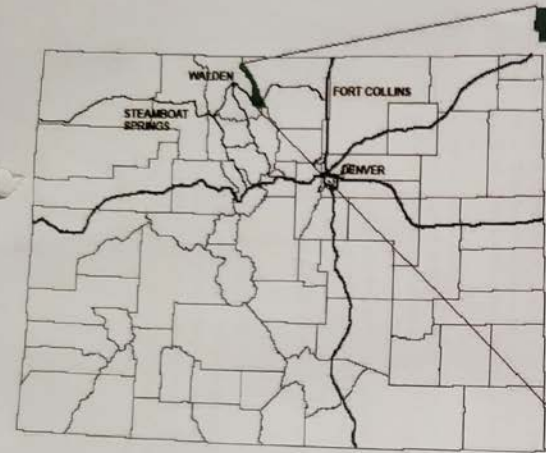
STATE FOREST STATE PARK

- Owned by the SLB
- The State Park was established in 1970
- 20 year recreational lease signed in 2017
- Colorado's largest State Park – 71,000 acres
- Elevation 8500 ft. - 12,500 ft.



STATE FOREST STATE PARK

Approximately
71,000 Acres



State of Colorado

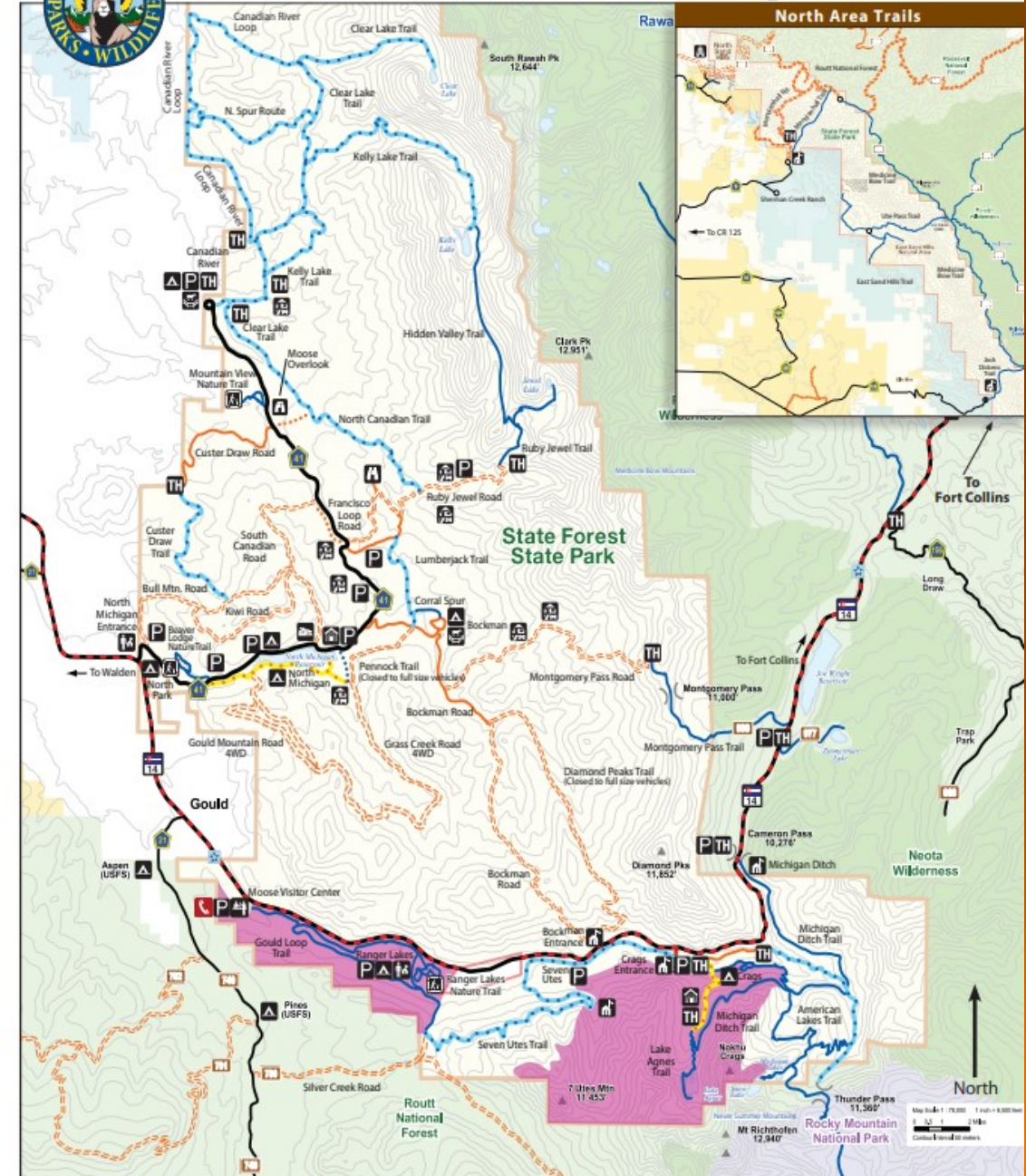
0 62.5 125 250 Miles



Located in Jackson County on the west slope of the Medicine Bow Divide



State Forest State Park Trail Map



AMENITIES and ATTRACTIONS



- Campgrounds and dispersed camp sites
- Cabins
- Lakes – Michigan Reservoir and five high country lakes
- Trails – 80 miles motorized, 70 miles non-motorized
- Approximately 24,000 acres roadless area
- Moose Visitor Center – located near the town of Gould

ACTIVITIES

Camping

Fishing

Paddleboarding

Backpacking

OHV access

Snowmobiling

Horseback riding

Cross country/backcountry skiing

Hiking

Wildlife viewing

Biking

Hunting

Snowmobiling

Boating

Special Events:

Gnar Never Summer 60K/100K races

Moose Fest

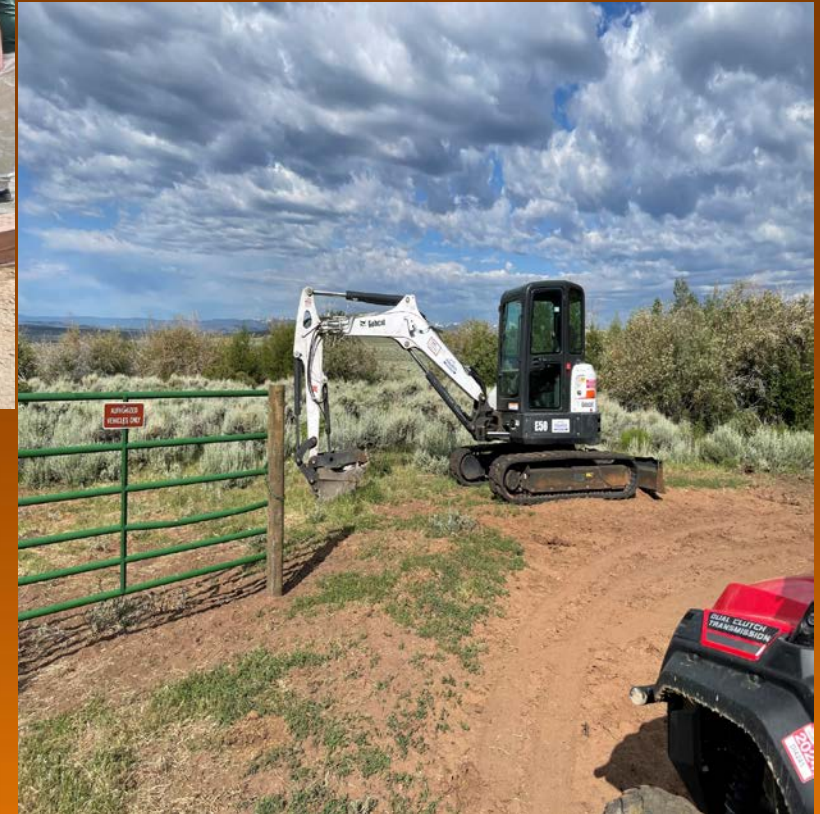
North Park Snow Snakes Poker Run

Multiple summer interpretive programs and winter full moon hikes



PROJECTS

- North Park Campground
- Pennock Trail construction
- North Sand Creek connection
- Canadian Trail Head Campground renovation
- Lake Agnes parking lot expansion
- Dark Sky certification



Questions

Josh Dilley

Park Manager

970.875.4463

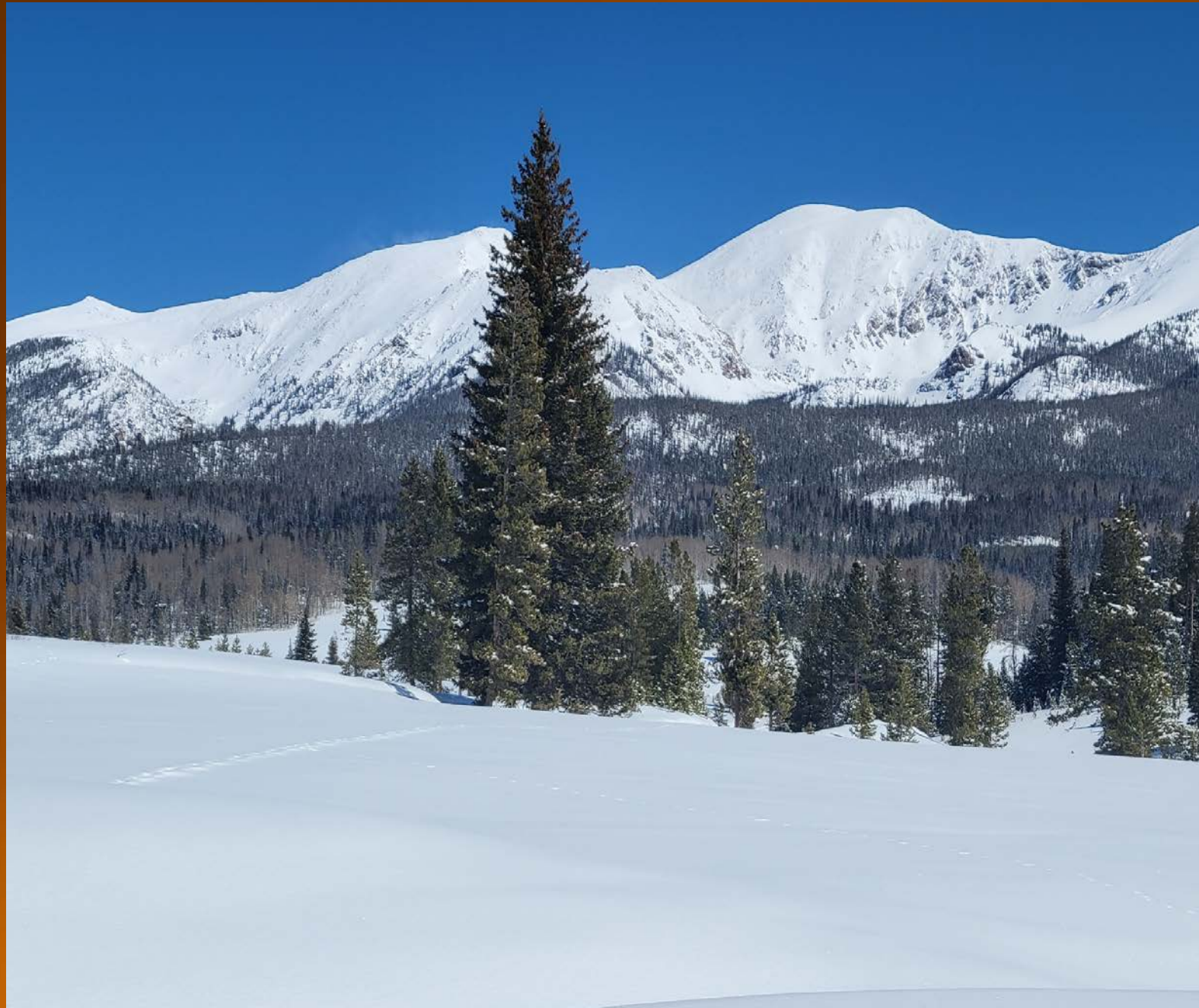
josh.dilley@state.co.us

Tony Johnson

Senior Ranger

970.875.4489

anthonyt.johnson@state.co.us





— STAGECOACH STATE PARK

- Located 15 miles south of Steamboat Springs in Routt County
- 800 water acres and 800 land acres
- Established in 1989 through lease agreement with the Upper Yampa Water Conservancy District

PARK AMENITIES AND ATTRACTIONS

An aerial photograph of a park featuring a winding river on the right side. In the center, there is a large parking lot filled with cars and a smaller area with several buildings. To the left of the parking lot, there are several campgrounds with numerous tents and RVs. In the foreground, there is a sandy beach area with people and umbrellas. On the right side of the river, there is a marina with several boats docked at a pier. The surrounding landscape is green and hilly.

- Cold water fishery - Rainbow Trout, Brown Trout, Northern Pike and Walleye
- 4 Campgrounds with a total of 92 campsites and 2 group campsites
- 100 picnic sites
- 10 miles of trails
- Swim Beach
- Marina Concession
- Shop/Office
- NEW VISITOR CENTER!!

ACTIVITIES

SUMMER

- Fishing - Reservoir and River
- Power boating and paddle craft
- Hiking, Biking, Equestrian trail use
- Birding and Wildlife Viewing
- Base camp for Steamboat Springs activities
- Waterfowl hunting

WINTER

- Ice Fishing
- 8 miles of groomed trails for snowshoeing, skiing and fat biking
- Maintain 6 campsites

PROJECTS

RECENT

- Redevelopment Plan
- Electrical upgrade in Pinnacle Campground
- Water Plant upgrade

CURRENT

NEW VISITOR CENTER!!!

FUTURE

- New water plant
- Junction City campground upgrade



THANK YOU!!

Questions?

YAMPA RIVER AND ELKHEAD RESERVOIR STATE PARKS

Routt and Moffat Counties

- 134 Miles of the Yampa River
- 900 Surface Acre reservoir



Elkhead Reservoir State Park

Elkhead Reservoir State Park

Craig Steamboat Springs

CR 29 Hwy 40

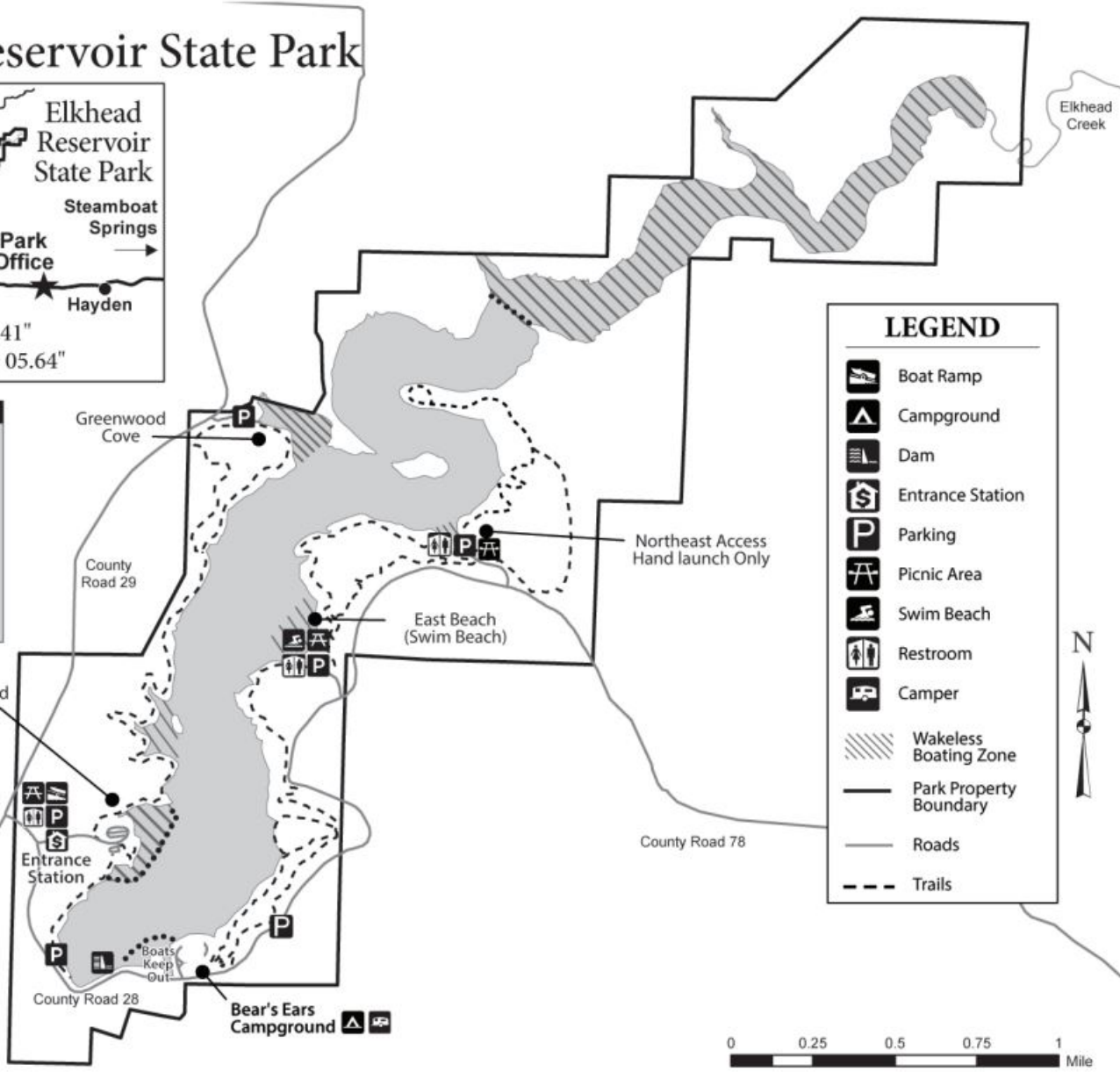
Park Office Hayden

Latitude: N: 40° 33' 17.41"
Longitude: W: 107° 23' 05.64"

Leave No Trace

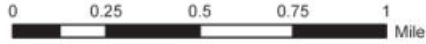
1. Plan ahead and prepare.
2. Travel and camp on durable surfaces.
3. Dispose of waste properly.
4. Leave what you find.
5. Minimize campfire impacts.
6. Respect wildlife.
7. Be considerate of other visitors.

Pronghorn Campground



LEGEND

- Boat Ramp
- Campground
- Dam
- Entrance Station
- Parking
- Picnic Area
- Swim Beach
- Restroom
- Camper
- Wakeless Boating Zone
- Park Property Boundary
- Roads
- Trails



WYOMING

Yampa River State Park

Designated Public Access Sites

- operated by Colorado Parks and Wildlife
- managed by different organization



Public Access Sites

1	Pump Station
2	Yampa River State Park Headquarters
3	State Wildlife Area
4	Yampa Valley Golf Course
5	Moffat County's Loudy Simpson Park
6	South Beach a.k.a. Yampa Project Pump Station
7	Duffy Mountain
8	Juniper Canyon
9	Maybell Bridge
10	Sunbeam
11	East Cross Mountain
12	West Cross Mountain
13	Deerlodge Park



These miles are river miles.

Road Miles

- Headquarters to Steamboat - 27 miles
- Headquarters to Craig - 17 miles
- Headquarters to Elkhead Res. - 14 miles



- * Day and overnight float/boating opportunities
- * Reservoir and river fishing
- * 12 miles of hiking/biking trails
- * Electric and nonelectric camping



CURRENT PROJECTS:

ELKHEAD ARCHERY RANGE
RIVER SITE REHAB/LEASE RENEWAL
SEASONAL HOUSING
BEACH REHAB
ADDITIONAL RIVER ACCESS OPPORTUNITIES



Questions

Jacob Dewhirst
Park Manager

970.276.2061

Jacob.Dewhirst@state.co.us

