

State Park Management Plans

Kacie Miller, Planning Manager



What are Park Management Plans?

Purpose, Audience, Inputs



Purpose

- Supports all 6 of CPW's Strategic Plan Goals
- Serves as a storehouse of information on park operations, needs, and issues
- Outlines short- and long-term visitor, recreation, resource, and infrastructure management visions for the park
- Satisfies requirements of some leases and agreements with other agencies
- Responds to desires of the public – 72% of Coloradans believe recreation providers should prioritize long-term planning and management¹

¹ *Colorado's 2019 Statewide Comprehensive Outdoor Recreation Plan (colroadoscorp.org)*





Audience

- Park Staff are primary
- Maintain institutional knowledge about resources and operations
- Tool for decision making





Plan Inputs



Resource Stewardship Plans

1. Goals and Objectives
2. Park Description and Significance
3. Resource Element Descriptions
 - i. Wildlife
 - ii. Vegetation
 - iii. Water and Wetlands
 - iv. Geology and Soils
 - v. Cultural Resources
 - i. Archaeological surveys
 - ii. Cultural resource inventories
 - iii. Prehistory and history
 - iv. Resource significance
4. Impacts and Influences
 - i. Regional
 - ii. Natural
 - iii. Human
5. Stewardship Recommendations
 - i. Resource conditions
 - ii. Ecological Sensitivity Zoning
 - iii. Prioritized Stewardship Actions
6. Implementation
 - i. Best Management Practices
 - ii. Management Prescriptions





Golden Gate Canyon State Park

Resource Stewardship Plan - *Public Version*

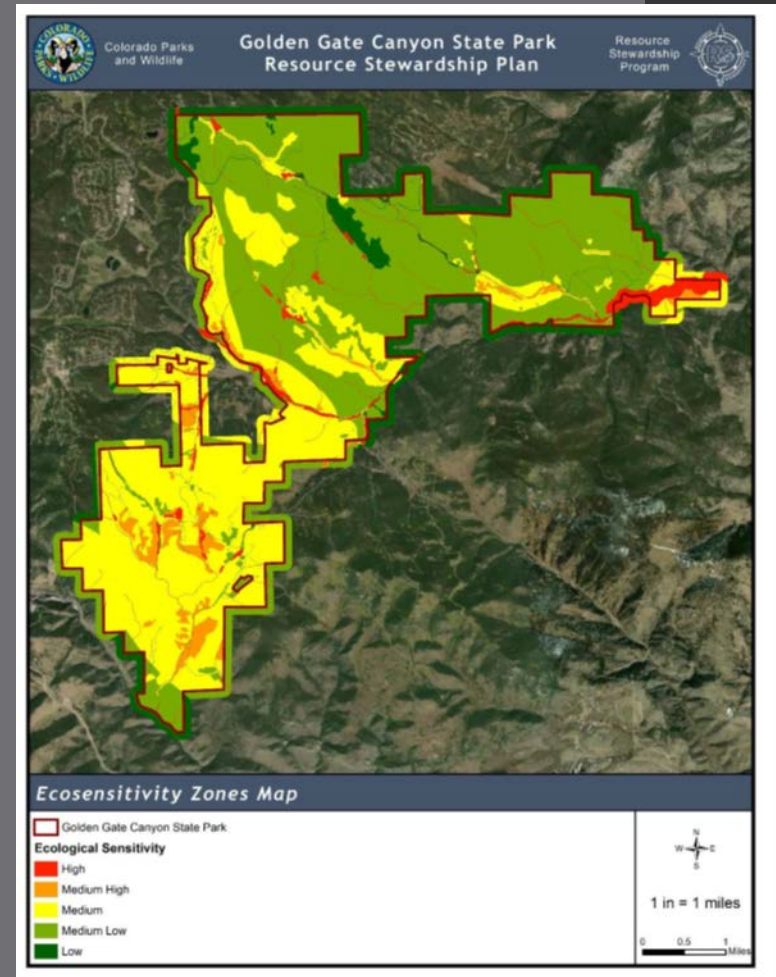


Prepared By: Collective Ecological Consulting, LLC

February 24, 2022

| Condition Status | | Trend in Condition | | Confidence in Assessment | |
|------------------|----------------------------------------|--------------------|---------------|--------------------------|--------|
| | Significant Concern | | Improving | | High |
| | Moderate Concern | | Unchanging | | Medium |
| | No concern, resource in good condition | | Deteriorating | | Low |

Resource Condition Status, Trend and Confidence Ratings for each element



What are the resources present at the Park and why do they matter?
 What is affecting resources at the Park?
 What resources are most important to protect and what should we do to protect them?

| | INFORM | CONSULT/INVOLVE | COLLABORATE |
|---------------|--------------------------------------------------------------------------------------------------------|--------------------------------------------------------------------------------------------------------------------------------------------------------------------------------------------|----------------------------------------------------------------------------------------------------------------------------------|
| Intent | We will keep you informed. | Your input and feedback will be reflected in the plan. <i>Each stakeholder's degree of involvement will be dependent on the Park and issues discussed in their management plan.</i> | Your expertise is critical to what is in the Plan. We will work together to make decisions and incorporate feedback from others. |
| Tools/Tactics | Fact sheets, open houses, presentations, press releases, social media/website updates, the Plan itself | Public comment, focus groups, surveys, advisory groups, conversations, review of draft maps/plan sections | Regular meetings and communication throughout the planning process. |

Stakeholder Engagement

Public, visitors, volunteers, partners, landowners (Park Property and neighbors), elected officials, fire and rescue.....



Plan content & development

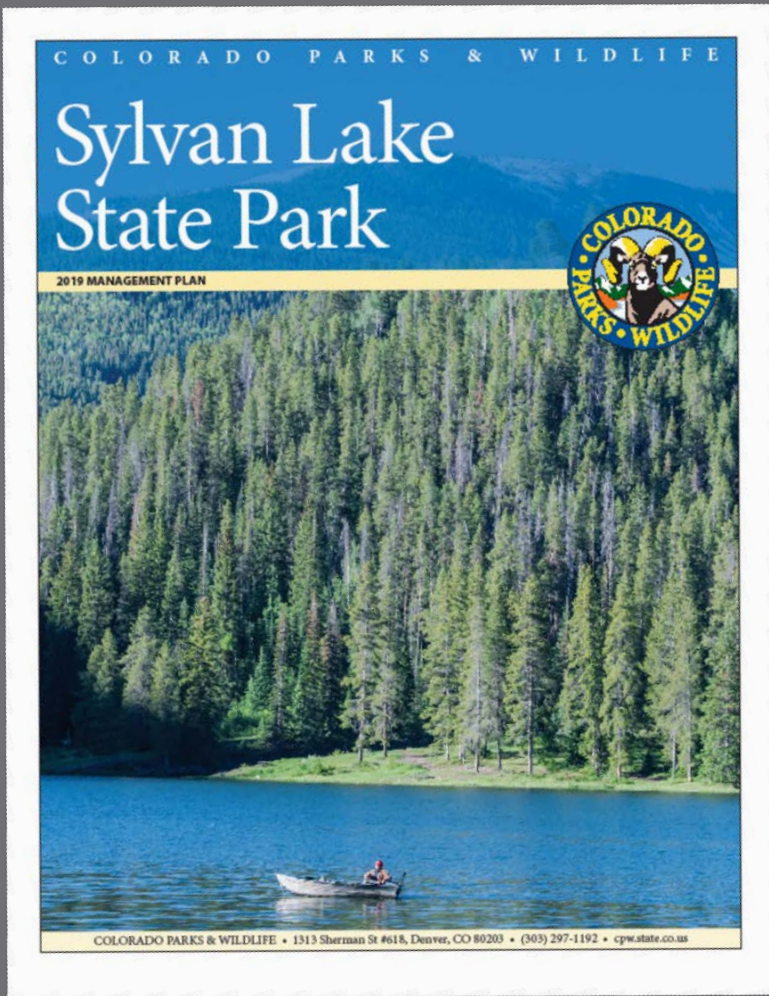
Scope & Scale, Template, Process





Scope & Scale





Existing Conditions

- Park Goals
- Resources, Facilities & Infrastructure, Staff & Volunteers, Interpretive Themes

Management Approach

- Management Zones
- Enhancement Opportunities

CPW Template



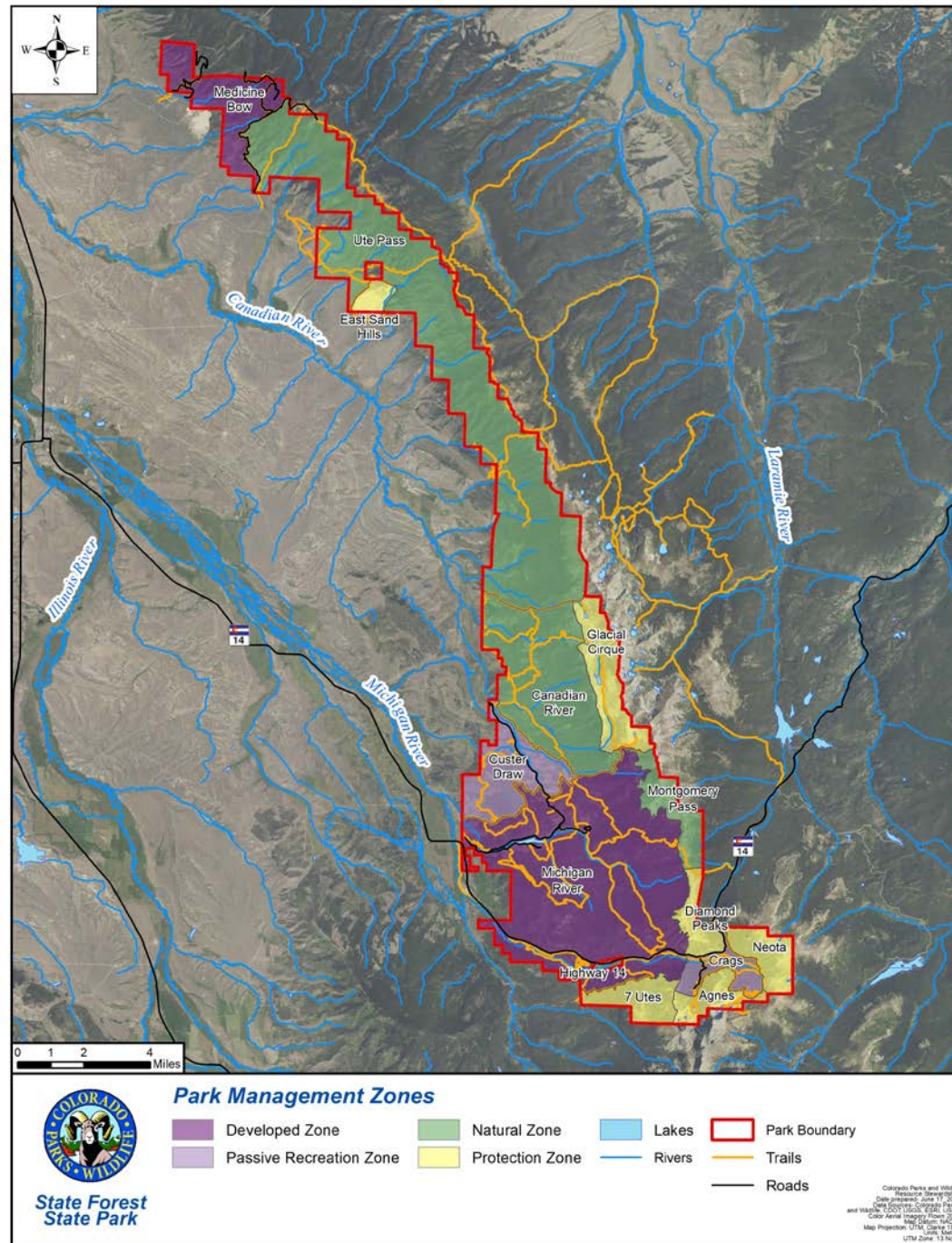
Management Zones

Development

Passive Recreation

Natural

Protection





What actions might be needed to achieve ‘desired future conditions’?

1. Rehabilitation or improvements to existing facilities

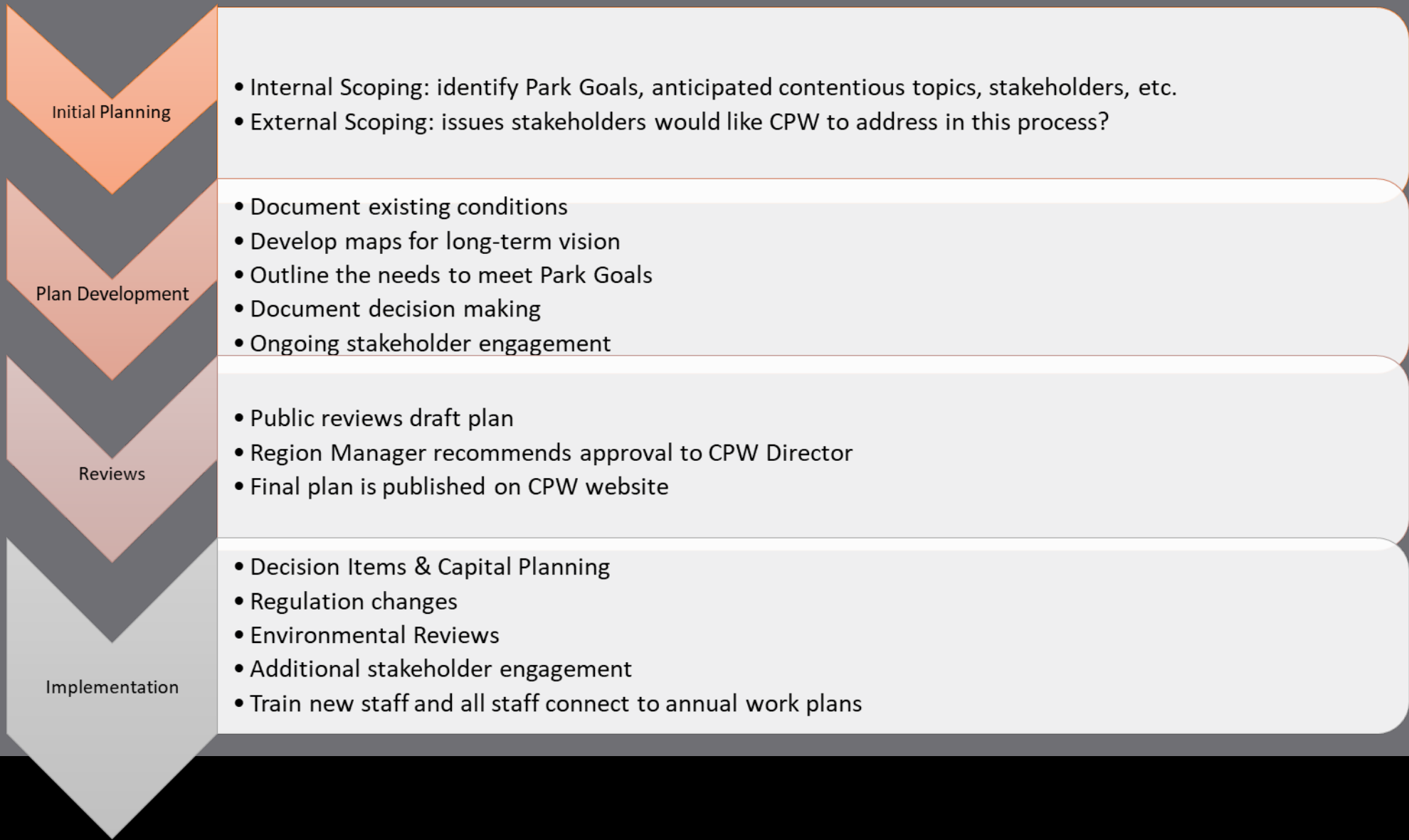
2. New infrastructure

3. Natural resource monitoring and protection

4. Long-term operational needs

Enhancement Opportunities & Management Initiatives





Process Overview





Opportunities in Process

For staff , relationship building & generating support for the Park



Role of PWC



Property Planning Policy (2019)

- This policy supports the development of resource stewardship and management plans for State Park and Recreation Areas.....planning informs short and long-term decision processes, resulting in benefits for current and future generations of Coloradans and our visitors.
- Property specific planning is essential to protect the unique natural, cultural and recreational resources

The Commission directs CPW staff to prioritize planning for existing and new properties as an essential activity for meeting the agency's mission.





Bill Vogrin
Southeast Region Public Information Officer
719-466-3927 / bill.vogrin@state.co.us

Deadline approaching for public comment on proposed Lathrop State Park management plan



Public Input

Public comment periods align with Commission meetings





Attention Hunters!

We hope you are excited for fall and the hunting season!

We are asking for your input on a few potential changes to Golden Gate Canyon State Park's hunting program that would begin in Fall 2022.

Use the link or QR code below for more information and a short survey. The survey will be open until September 30, 2021.

<https://bit.ly/37Ty0aH>



Regulation changes
During the planning process



| Strategy | Indicators of Success | Outcomes | Impacts |
|------------------------------|----------------------------------------------|-----------------------------------------|-------------------------------------------------------------------------|
| Trip Planning | | Number of days cars are turned around | Improved arrival experience |
| Parking Data Collection Tool | Awareness, Usage, Influence on Trip Planning | Number of vehicles passing through town | Continued visitor satisfaction |
| Strategic Communications | | | |
| Reservations | Percentage of slots used | Entrance station wait time | Protection for Natural and Cultural Resources |
| Shuttle | Ridership | | |
| Site Management | | Dispersed Visitation | Reduced frustration for neighbors, visitors and staff |
| Parking spot delineation | Appropriate utilization of all spaces | Webpage/app hits and downloads | |
| Entrance Station redesign | Wait time | Visitor Satisfaction | Progress in support of Park Goals and towards Desired Future Conditions |



Eldorado Canyon’s plan included management strategies related to six focus areas including these for “Parking and Access”. Reservations, or time-entry, were to be piloted as soon as it was feasible to do so.



Regulation changes
As part of plan implementation



Property Naming & Real Estate Transactions





**LIVE LIFE
OUTSIDE**