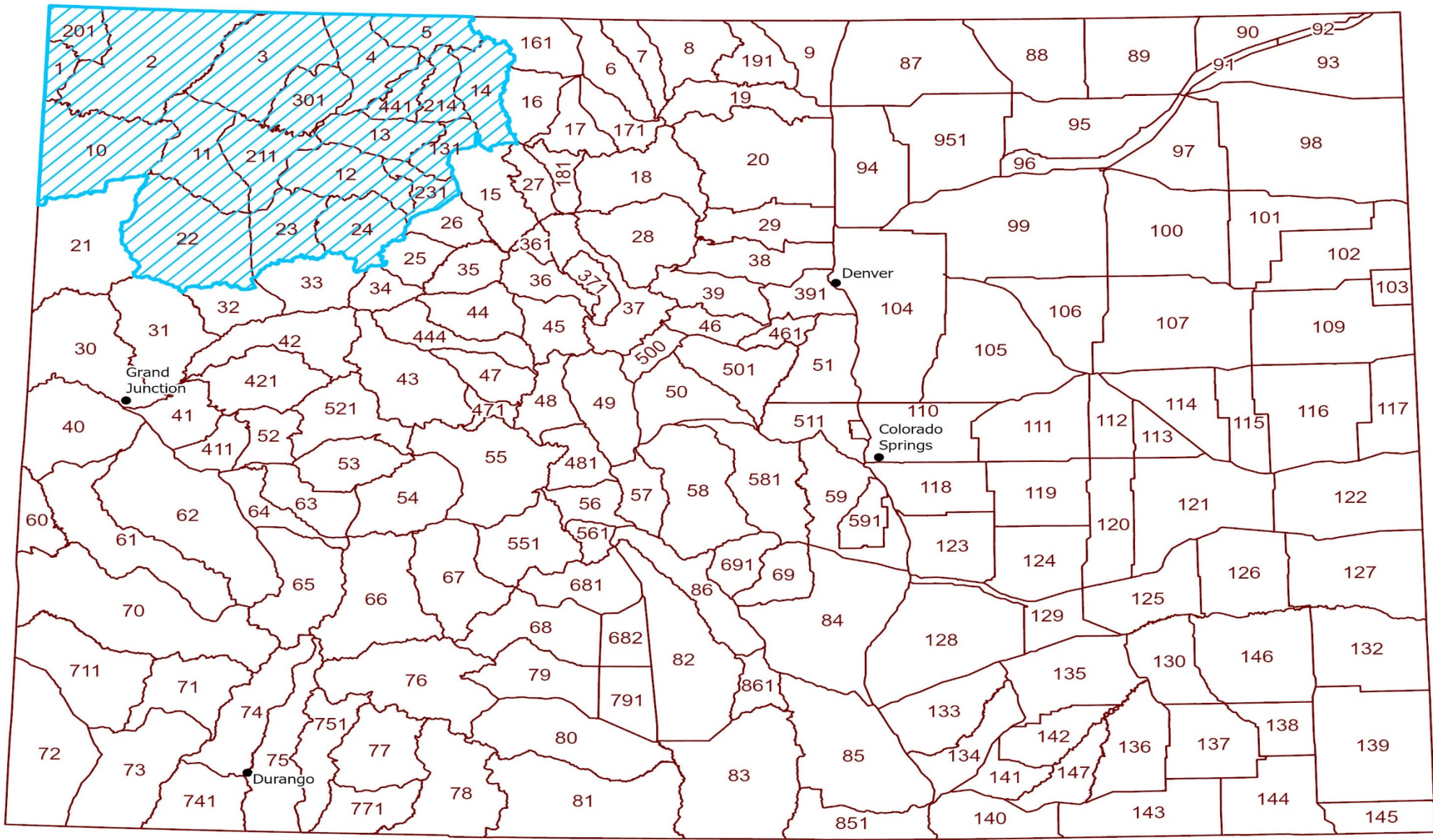



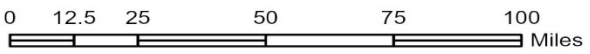
# NW Colorado Winter 2022-23





**Severe Winter Zone**

 DAUs with significant license reductions due to severe winter



# Conditions Summary:

- Late November through April 12 100% snow cover
- 83-84 Winter Comparison (DOW Feeding Operation)
- High Wind and Drifting Events
- 3 foot base most of winter with up to 14 foot drifts
- Flooding mid-April
- Historic winter with severe winter range use and western movement

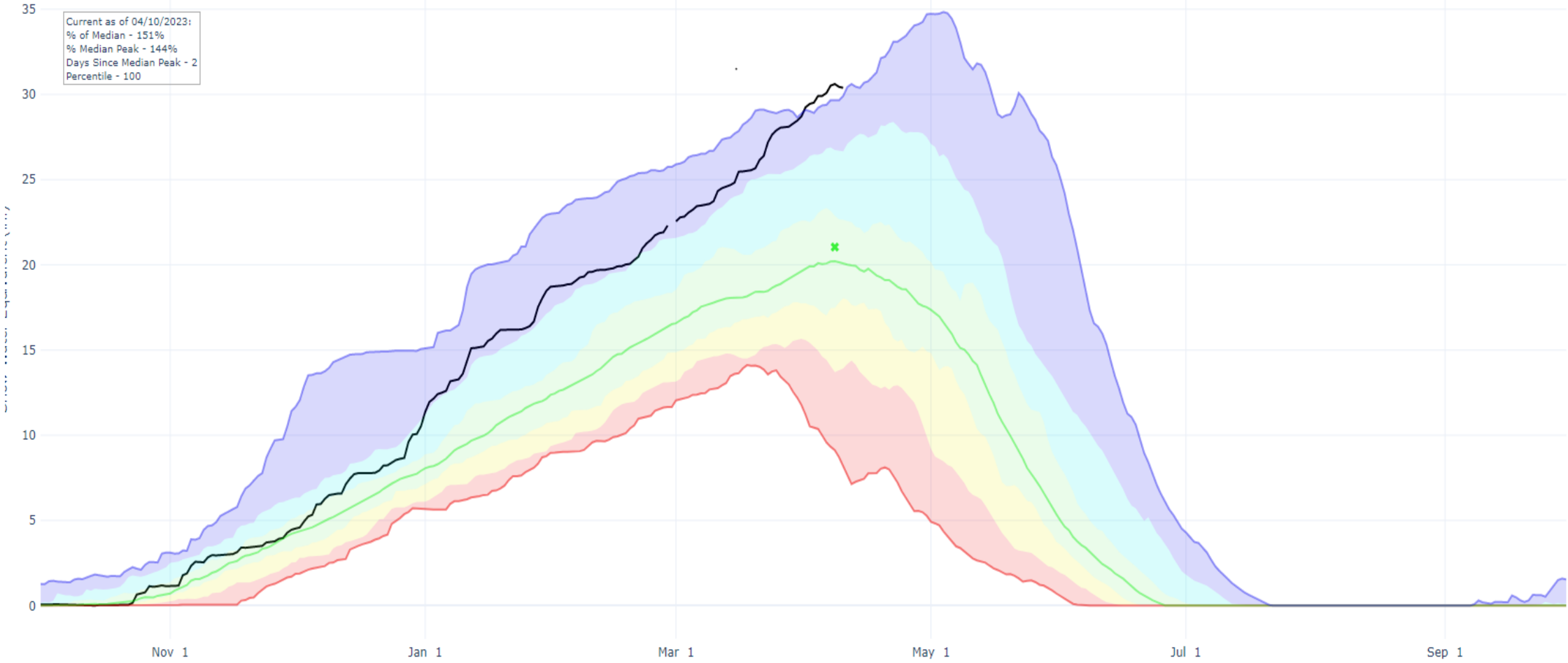
# SNOW WATER EQUIVALENT IN YAMPA-WHITE-LITTLE SNAKE

Reset Range

[Link to data: CSV / JSON](#)

[Station List](#)

Current as of 04/10/2023:  
% of Median - 151%  
% Median Peak - 144%  
Days Since Median Peak - 2  
Percentile - 100

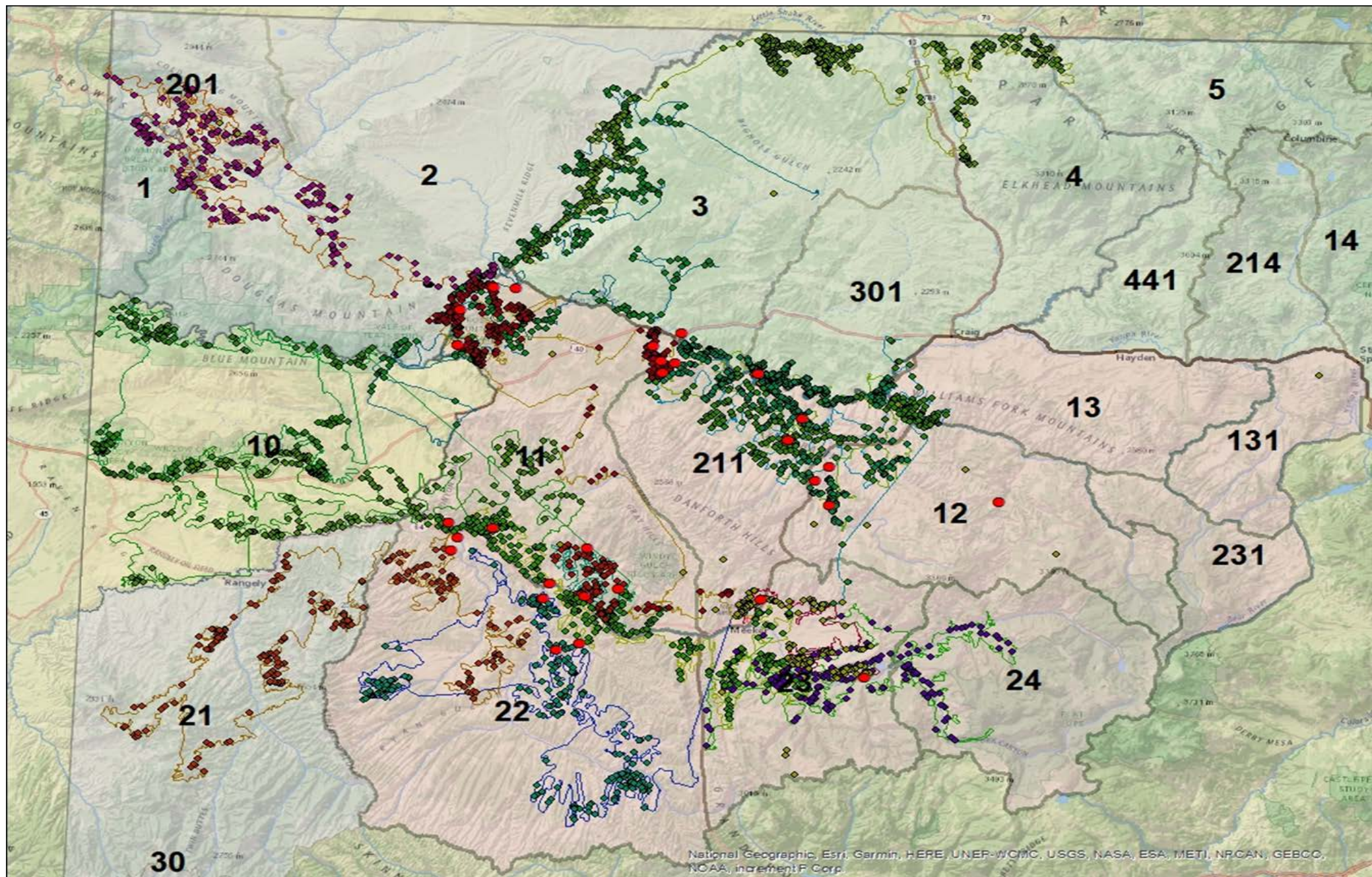


- Median Peak SWE
- Max
- Median (POR)
- Median ('91-'20)
- Min
- Stats. Shading
- 2023 (20 sites)
- 2022 (20 sites)
- 2021 (20 sites)
- 2020 (20 sites)
- 2019 (20 sites)
- 2018 (20 sites)
- 2017 (20 sites)
- 2016 (20 sites)
- 2015 (20 sites)
- 2014 (20 sites)
- 2013 (20 sites)
- 2012 (20 sites)
- 2011 (20 sites)
- 2010 (20 sites)
- 2009 (20 sites)
- 2008 (20 sites)
- 2007 (20 sites)
- 2006 (20 sites)
- 2005 (20 sites)
- 2004 (18 sites)
- 2003 (18 sites)
- 2002 (18 sites)
- 2001 (17 sites)
- 2000 (17 sites)
- 1999 (17 sites)
- 1998 (16 sites)
- 1997 (16 sites)

Statistical shading breaks at 10th, 30th, 50th, 70th, and 90th Percentiles

























# Direct Impacts to Wildlife from Winter

- Overwinter mortality from malnutrition
- Increased vehicle collisions
- Increased fence crossing mortality













# CPW Response:

- Late December proactive contacts made by DWMs to Landowners on needs
- Distributed over 2000 8ft x 8ft game damage panels and thousands of pyros through state game damage program
- Implemented 250 game damage elk licenses through local HPP Committee distribution hunt
- Requested approval for baiting program from Director to reduce damage
- Mid January made request to HPP Statewide Council for relief funding (total of \$400K)
- Additional funding secured from Regional game cash funds (\$250K)
- Over 2.7 million pounds of hay and 10 tons of pellets utilized to bait big game to reduce damage and replace lost feed
- 99 Landowners assisted
- 5,000 conflict elk from Hayden, Craig, Lay, Maybell, Sunbeam, Elk Springs, and Rangely
- CPW and Landowner baiting areas included private land, BLM, and SLB
- Excavation of bait sites and haystacks
- Baited off roadways in high collision areas to increase public safety



















# Thanks To:

- Moffat, Rio Blanco, and Routt County Landowners and residents
- HPP Statewide Council, Michael Blanck, and Teri Polley
- Area 6 staff and Area 10 staff
- Regional support – Travis Black, Garrett Watson, Rachael Gonzales

