

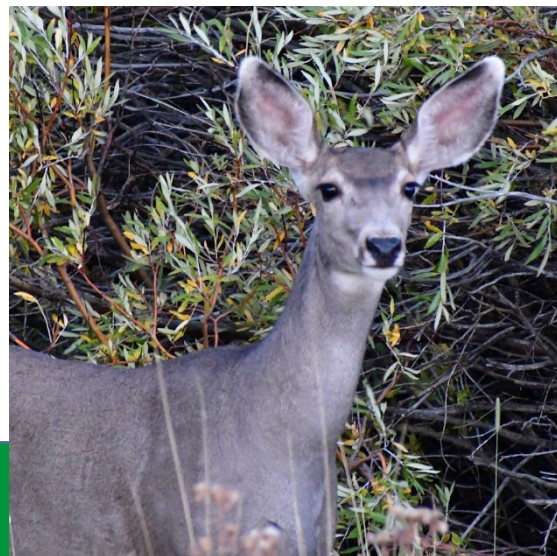
# Hunter Outreach Program Big Game License Overview



LIVE LIFE  
OUTSIDE

# Hunter Outreach Big Game Licenses

- R3- Recruitment, Retention, Reactivation
- Educational
- Mentored
- Supports CPW outreach hunts
- Supports qualified sponsor organizations





# Types of Outreach Licenses

- Youth Outreach Licenses (YOL)
- Novice Adult Outreach Licenses (NAOL)
- Disabled Veteran Outreach Licenses (DVOL)



# Big Game Licenses Available

	<u>Maximum Annual</u>		<u>2023 Licenses</u>			
	<u>Male/ES</u>	<u>Female</u>	<u>Male/ES</u>	<u>Female</u>	<u>Total</u>	
Elk	100	500	0	14	14	
Deer	100	300	22	52	74	
Pronghorn	60	240	41	51	92	
			<b>Total:</b>	63	117	180



LIVE LIFE  
OUTSIDE

# Process for Submitted Requests

Landowner Permission



GMU Preference Point Review



Field Staff Review/Approval



Regional Manager and Statewide  
Hunter Outreach Coordinator Approval



License Voucher



Voucher Dispersed to Hunters or Organizations





# Who are the Hunter Outreach Coordinators?

- NE Region Hunting and Angling Outreach Coordinator- Pepper Canterbury
- NW Education and Hunting Outreach Coordinator- Kathleen Mawhinney
- SE Education Outreach Coordinator- Tracy Predmore
- SW Education and Volunteer Outreach Coordinator- Catherine Dolder
- Statewide Hunter Outreach Coordinator- Bryan Posthumus
- Hunter Ed and Hunter Outreach Program Assistant- Robert Garza



# Sample of Partner Organizations

- Jefferson County Open Space
- The Nature Conservancy
- Veterans Affairs Hospital-Recreation Programs
- Basecamp 40
- Outdoor Buddies
- Special Youth Challenges
- Pheasants Forever
- Rocky Mountain Elk Foundation
- Mule Deer Federation
- 4 Corners SCI
- Open Up Outdoors
- Hunters of Color (new)
- TRCP



# Additional Hunter Outreach Programs

- Mentored small game, waterfowl, and turkey
- Seminars
- Webinars
- Skills Clinics
- Shooting Clinics



## FY 2022-2023 Program Summary

105 Mentored Hunts

484 Mentored Hunters

6,100+ Volunteer Hours

131 Outreach Programs

7,203 Outreach Participants





# Limiting Factors

- Staff and Volunteers
- Landowners
- Preference Point Cap
- Public perception, competition with public hunters, seasons

