



Colorado Outdoor Regional Partnerships

Parks and Wildlife Commission
March 13, 2024



LIVE LIFE
OUTSIDE

Jody Kennedy, Colorado Parks & Wildlife



Outdoor Regional Partnerships Initiative

- Regional collaboration and leadership
- Resources and information sharing
- Networking and coordination across regional and statewide initiatives
- Informing future funding investments

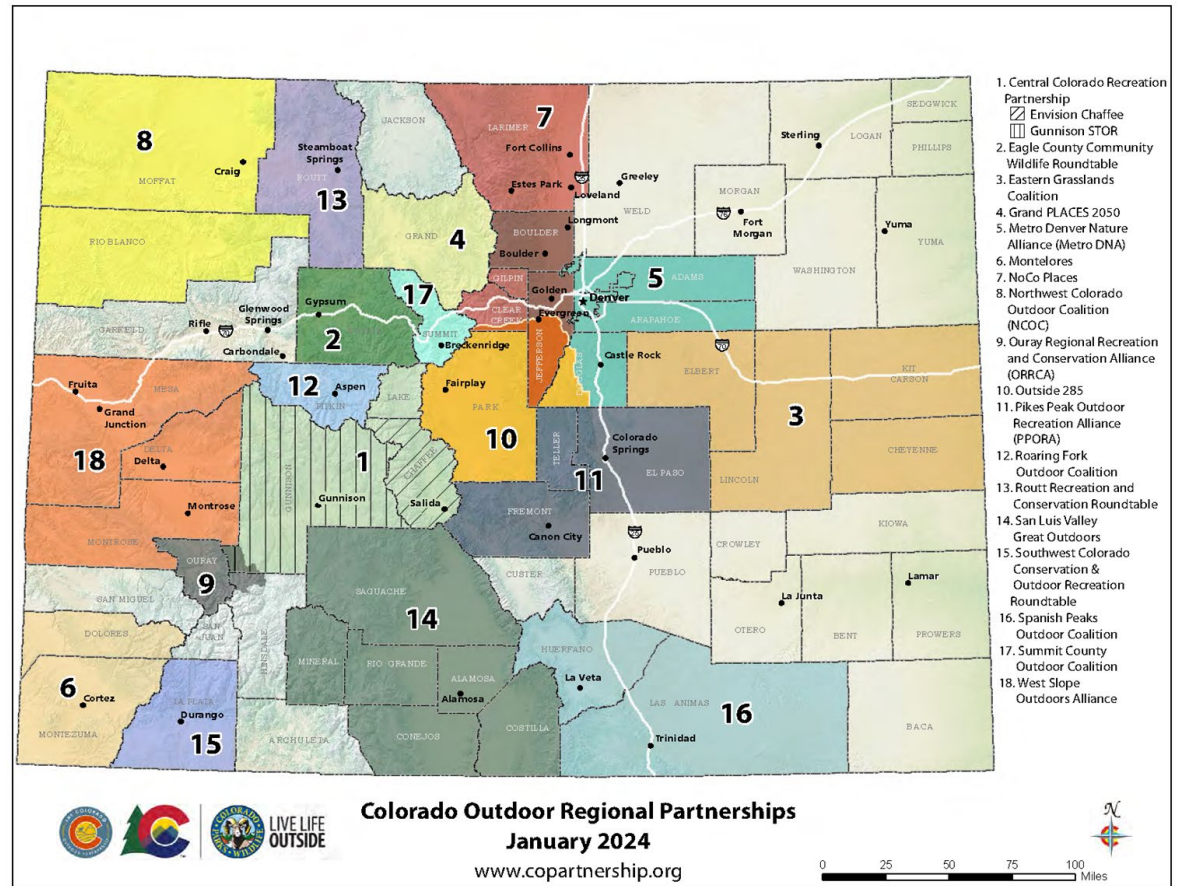


LIVE LIFE
OUTSIDE



GOCO
GREAT OUTDOORS COLORADO

- 18 Regional Partnerships
- 70% of Colorado covered
- 31 grants awarded
- \$3,565,000 total funding





Conservation & Recreation Planning for Colorado

Colorado's Outdoors Strategy

Statewide Plans: Conservation, Recreation, Climate, Water, etc.

Regional Partnerships: Plans & Implementation



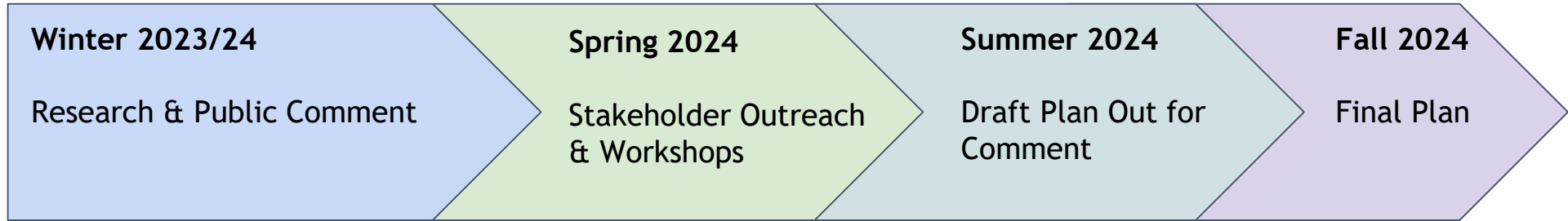
Final Plan Released September 2024



LIVE LIFE
OUTSIDE



2024-2028 Statewide Comprehensive Outdoor Recreation Plan



Data Collection:

- Outdoor Recreation Participation Study
- Land Managers Survey
- Recreation Access Analysis
- Literature & Trends Review
- Engage CPW Public Comments
- Economic Contributions of Outdoor Recreation

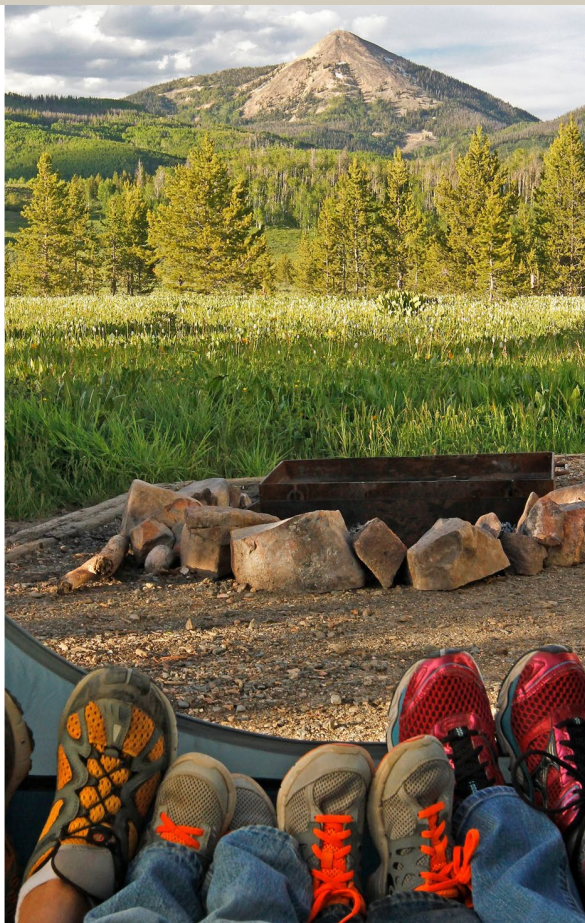




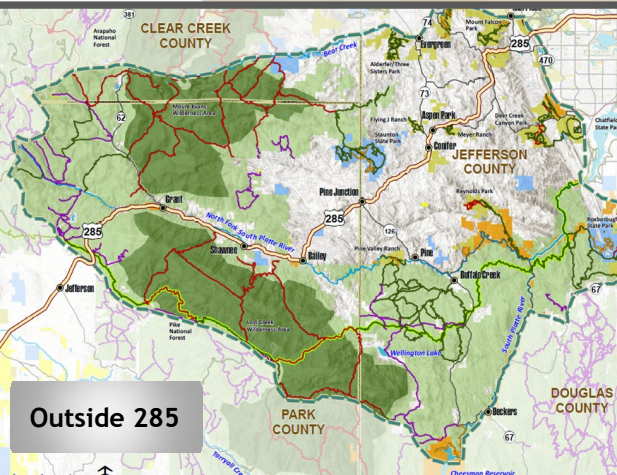
Outdoor Regional Partnerships



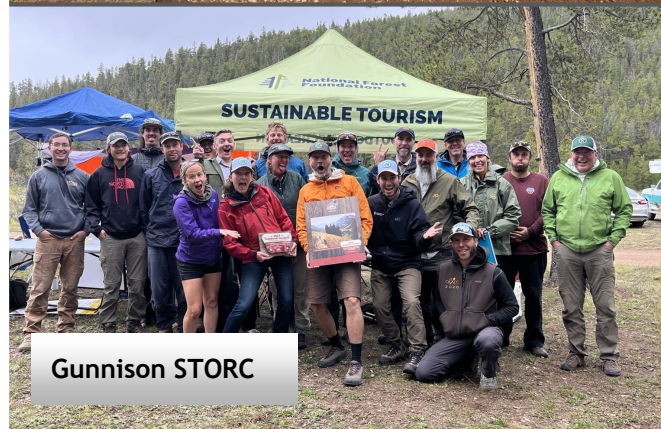
Metro DNA



SLV GO!



Outside 285



Gunnison STORC



PEOPLE | LAND | ACCESS | CONSERVATION | ECOSYSTEMS | SUSTAINABILITY

NoCo Places

Coalition Overview



A common voice for public lands



Our History

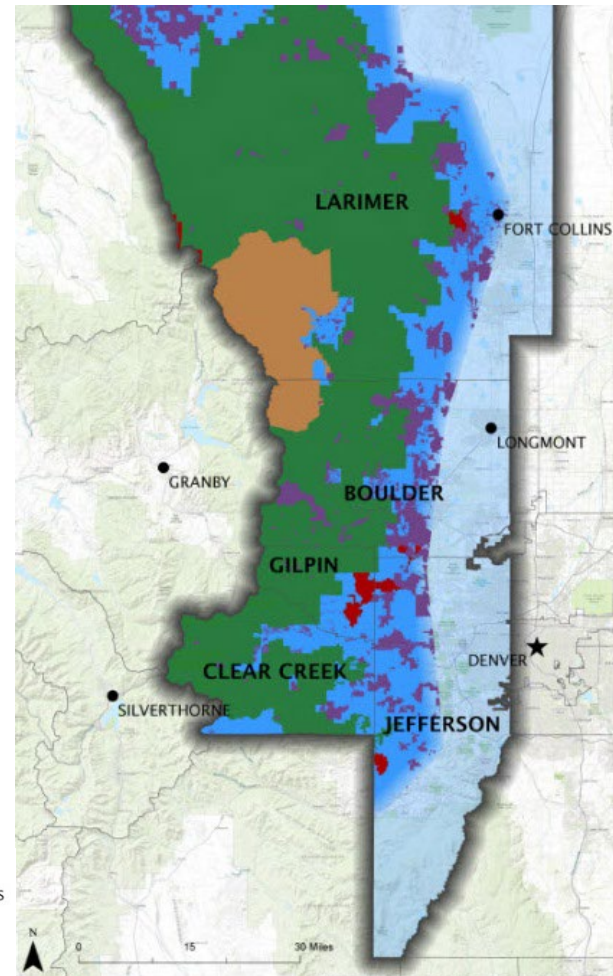
- Began meeting in 2018
 - Increased visitation to public lands in our region was impacting wildlife, the environment, and threatening the Colorado outdoor experience
 - United by a desire to protect and preserve what makes this region so special and a recognition that the solution requires landscape scale collaboration between all land agencies – county, state and federal
 - Formally signed our MOU in 2019; updated in 2024
- Our mission: collaborate to protect and conserve natural and cultural resources while providing equitable access and a quality recreation experience for current and future generations.



Who We Are

- U.S. Forest Service, Arapaho & Roosevelt National Forests and Pawnee National Grassland
- Colorado Parks & Wildlife, Northeast Region
- National Park Service: Rocky Mountain National Park
- Boulder County
- Clear Creek County
- Gilpin County
- Jefferson County
- Larimer County

Additionally, a larger NoCo partners group meets every other month and includes local groups and organizations related to conservation and recreation.





Areas of Focus

- Equity, Diversity and Inclusion
- Communications and Common Messaging
- Conservation and Recreation Vision each agency will incorporate into their plans (e.g., Forest Management Plan Update)
 - Conservation Summary Map
 - Mobile Phone Data
 - Stakeholder Engagement
- Exploring Issue and Geographic-Specific Pilot Projects
 - Unauthorized Trails
 - Forest Service Concessionaire Opportunities
 - Pilots from Conservation and Recreation Vision
 - Others

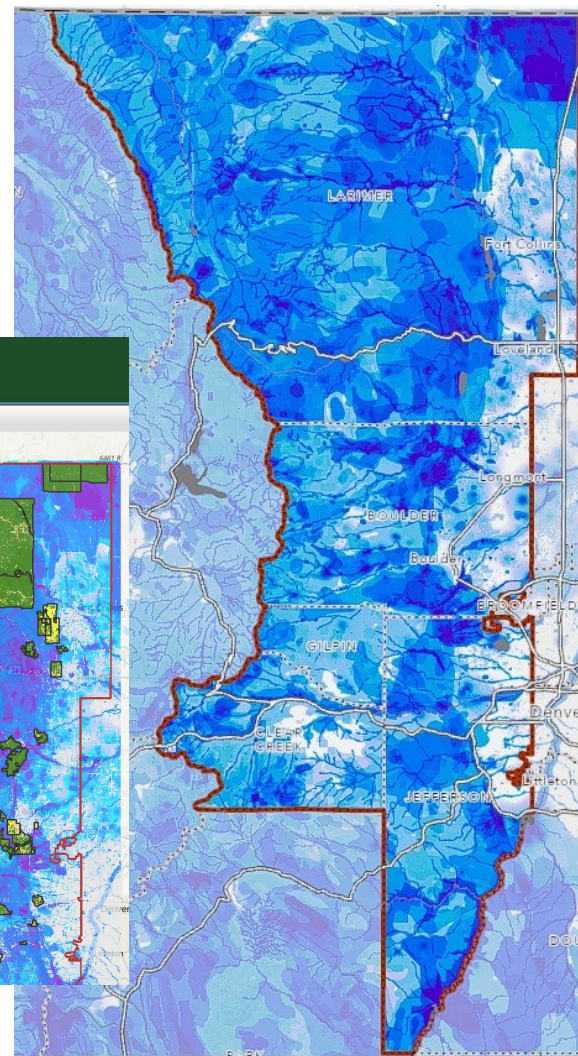


Conservation Summary

Conservation Summary Map (codex.cnhp.colostate.edu)

1. Create free account
2. Go to Map tab
3. Choose layers under Regional Partnerships

The screenshot shows the ODEX web application interface. The top navigation bar includes links for Home, Map, My Projects, My Group, Terms & Conditions, Contact Us, and Help. Below the navigation bar, there are buttons for Switch Basemap, Add Resources, Create Project, and ROI Report. The main interface is divided into a left sidebar for layer selection and a central map area. The sidebar has several sections: Layers (with checkboxes for Wetlands, Rivers, Lakes, and Springs (NHD), Alluvial Aquifers (DWR), and Watersheds (WBD)), Invasives (with checkboxes for State Listed Noxious Weeds (EDDMaps) and CNHP Invasive Species Range Maps (Public)), Administrative Boundaries (with checkboxes for CPW Administrative Units, BLM Field Offices, USFS Ranger Districts, CDOT Regions, and SLB Surface Ownership), and Regional Partnerships (with checkboxes for NOCO Places, NOCO Places Boundary, NOCO Recreation Study Areas, Relative Use By Recreation Study Area, and Conservation Summary by Weight). The Regional Partnerships section is highlighted with a red box and a red arrow pointing to the map. The map area shows a topographic map with various colored overlays representing different conservation layers. The map is titled 'ODEX' and has a search bar and a 'Make a Map' button.





Conservation Summary

• Mobile Data Dashboard

NoCo PLACES 2050

MOBILE LOCATION DATA DASHBOARD

Change Filter Selections:

Roads:

Residents:

Season:

Introduction

This interactive dashboard enables comparisons of all locations by visitor origin, drivetime/drive distance, trends over time (patterns by year/month/day/day of week), demographics, and dwell time (how long users were at the location), and more.

The dashboard consists of several figures. For any figure, click the **i** icon for additional information and definitions.

All views may be filtered by season or residential location in order to allow for the inclusion/exclusion of devices with inferred home locations within the boundary of a particular location. Additionally, observations within a buffered radius of roadways may be included or excluded from all views. Access these options using the filter options above.

The figure at right shows the number of sites by entity.

1) To begin, select an entity by clicking a bar at right.

This will display the total visitor days for each location in that entity. A visitor day is defined as a unique device per location per day, i.e. one device id observed at a location on three different dates equals three visitor days. Overall visitor day counts should be thought of as a sample size, and caution should be used when making inferences about total visitation as the amount of available data may fluctuate over time or differ by location. This is due to a variety of factors such as available cell reception or a user's propensity to be on their mobile device while visiting the location.

2) Select a location to view a map and additional metrics.

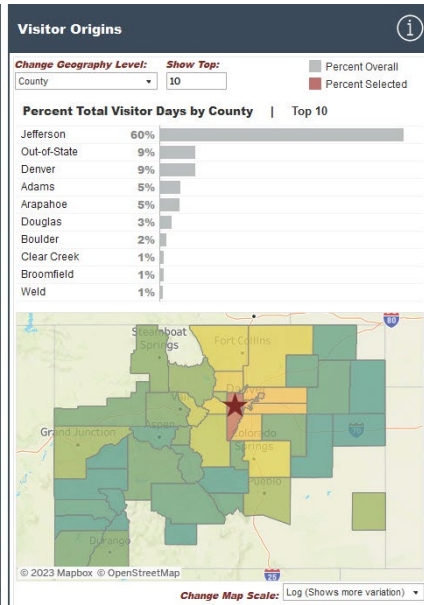
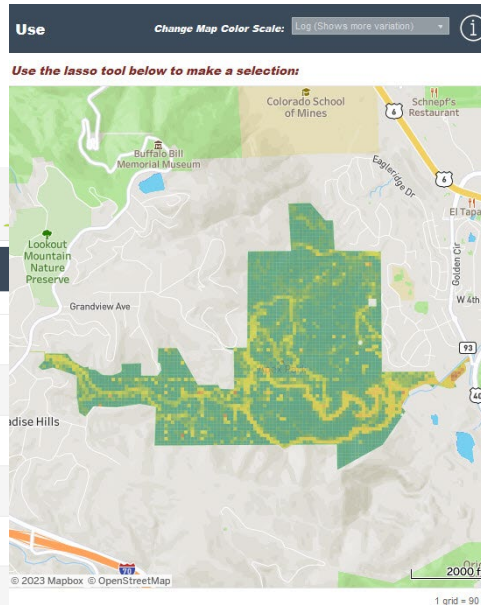
Use the bar charts to change entity or location selections.

Note: Because this dashboard runs on large datasets, selections may take several moments to load.

No. of Locations by Entity & Total Visitor Days by Location

Select an Entity:

USFS: 20 Locations
Clear Creek County: 15 Locations
Boulder County POS: 9 Locations
Larimer County: 5 Locations
Jefferson County: 5 Locations
Gilpin County: 4 Locations
Fort Collins: 4 Locations
City of Boulder OSMP: 4 Locations
State Parks: 2 Locations





Stakeholder Focus Groups

- 16 focus groups conducted from November 2023 to January 2024
- 140 participants
 - Youth Stewardship & Education
 - Cycling & Mountain Biking
 - Tourism & Economic Development
 - NoCo Partners
 - Conservation NGOs
 - Motorized Recreation
 - Tribal & Indigenous Organizations
 - Non-Motorized Recreation
 - Water & Trails Stewardship Organizations
 - Commercial Outfitters & Guides
 - Climbing
 - All Abilities
 - Hunting & Angling
 - Private & Working Lands
 - Forest Health & Fireshed Planning
 - Historically Underrepresented Communities





Funding

- Our strength and success would not be possible without the funding support received from multiple sources over the years
 - Colorado Parks and Wildlife
 - Each of the eight NoCo Agencies
 - Colorado Department of Local Affairs
 - Great Outdoors Colorado
 - The Gates Family Foundation
 - The Boettcher Foundation
 - The Metro Denver Economic Development Corporation
 - Western Resource Advocates
 - Jefferson County Economic Development Corporation
 - The Colorado Forum
 - Mighty Arrow Family Foundation



Our Future

- We have just begun
- The commitment of each NoCo agency is stronger today than ever before; each tremendous long-term opportunity and potential for greater collaboration, sharing management approaches
- Hiring part-time programmatic staff support
- Hiring a new full-time Executive Director by year-end
- Considering forming a 501(c)(3)



Thank You CPW!

NoCo Places

A common voice for public lands

www.nocoplaces2050.com