

2006 Sharp-tailed Grouse Harvest Report

The 2006 Sharp-tailed grouse report provides information on the estimated harvest of mountain sharp-tailed grouse. A stratified random sample of 2500 sharp-tailed grouse hunters was drawn from among HIP participants. The sample was stratified as follows:

- 1 = Not likely to hunt
- 2 = Somewhat likely to hunt
- 3 = Very likely to hunt
- 4 = Very likely to hunt for 4 or more years

The post-season survey, conducted by telephone, contacted 876 (35% response rate). In total, 25, or 2.8% reported they had hunted sharp-tailed grouse. The number of birds harvested ranged from 0 (11 respondents) to 6 (2 respondents), with 7 hunters reporting a harvest of 2 birds.

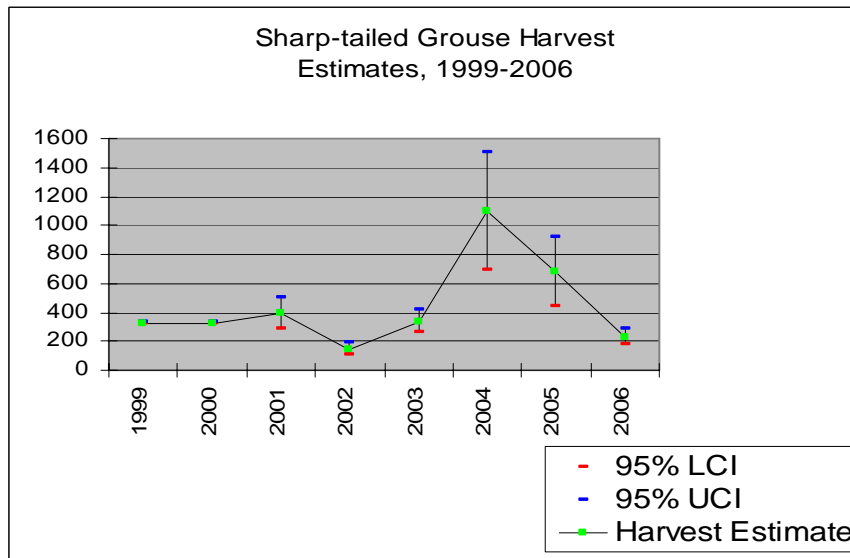
45% reported being satisfied with their sharp-tailed grouse hunting experience and 60% reported no crowding. Statewide harvest was estimated at 232 ± 53 (185 – 291).

Comparison with 2005 survey results:

Harvest was down from 2005 when an estimated 679 ± 235 (444 – 914) were harvested. Hunter numbers decreased from 576 ± 63 to 173 ± 71 in 2006. Days hunted also decreased with an estimated 340 \pm 143 hunting in 2006, compared to 1,572 \pm 447 in 2005.

Harvest by Strata and County

Summary tables provide estimates of hunter numbers, days in the field and sharp-tailed grouse harvest by strata and population. Estimates are followed by the standard error of the estimate, and 95% upper (UCI) and lower (LCI) confidence intervals around the estimate. For example, the estimated number of sharp-tailed grouse hunters in Routt County is 102 plus or minus 1.96(SE) or 1.96(22)=43. The range of the estimate is 77 to 134. Estimates of days in the field and harvest are interpreted the same way. State totals are given at the bottom of each column.



**2006 Sharp-tailed Grouse harvest,
by strata**

Strata	Hunters	SE(hunters)	LCI Hunters	UCI Hunters	Days Hunted	SE (Days Hunted)	LCI Days	UCI Days	Harvest	SE(harvest)	LCI Harvest	UCI Harvest
1	0	0	0	0	0	0	0	0	0	0	0	0
2	69	30	31	154	110	50	48	255	55	14	33	91
3	91	19	61	137	209	50	132	332	156	22	118	205
4	13	5	6	27	21	11	8	55	21	6	13	36
Total	173	36	116	259	340	72	226	511	232	27	185	291

**2006 Sharp-tailed Grouse harvest,
by county**

County	Hunters	SE(hunters)	LCI Hunters	UCI Hunters	Days Hunted	SE (Days Hunted)	LCI Days	UCI Days	Harvest	SE(harvest)	LCI Harvest	UCI Harvest
Routt	102	22	77	134	221	53	163	300	217	74	142	332
Gunnison	5	5	1	24	5	5	1	24	11	10	2	49
Archuleta	5	5	1	24	5	5	1	24	0	0	0	0
La Plata	14	13	3	67	28	27	6	135	0	0	0	0
Lake	14	13	3	67	14	13	3	67	0	0	0	0
Las Animas	14	13	3	67	14	13	3	67	0	0	0	0
Moffat	14	13	3	67	28	27	6	135	0	0	0	0
Pitkin	5	5	1	24	27	24	6	122	0	0	0	0
Total	173	36	116	259	340	72	226	511	232	27	185	291

