

2011 Sharp-tailed grouse Harvest Report

The 2011 sharp-tailed grouse report provides information on the estimated harvest of mountain sharp-tailed grouse. A stratified random sample of 3,480 sharp-tailed grouse hunters was drawn from among HIP participants. The sample was stratified as follows:

- 1 = Not likely to hunt
- 2 = Somewhat likely to hunt
- 3 = Very likely to hunt
- 4 = Very likely to hunt \geq 4 years

The post-season survey, conducted by telephone and email, contacted 1,528 (44% response rate) hunters. In total, 56 respondents, or 3.6%, reported they had hunted sharp-tailed grouse in 2011. The number of birds harvested ranged from 1 (1 respondent) to 15 (1 respondent), with 12 hunters reporting a harvest of 2 birds. Days hunted ranged from 1 (13 hunters) to 14 (1 hunter).

Approximately seventy-two percent reported being satisfied with their sharp-tailed grouse hunting experience and 62% reported no crowding. Statewide harvest was estimated at **298 \pm 129 (194 – 457)**.

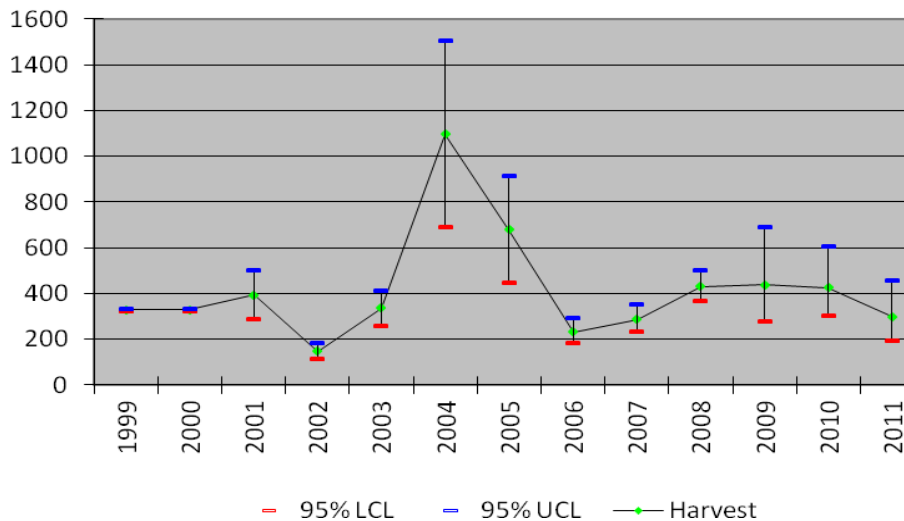
Comparison with 2010 survey results:

Harvest was lower than 2010 when an estimated 426 \pm 149 (301 – 603) grouse were harvested. Hunter numbers in 2011, **117 \pm 29 (91 – 150)**, were significantly lower than 2010 when 241 \pm 79 (177 – 370) reported hunting. Days hunted decreased significantly from 718 \pm 267 (496 – 1,039) in 2010 to **386 \pm 129 (266 – 510)**.

Harvest by Strata and County

Summary tables provide estimates of hunter numbers, days in the field and sharp-tailed grouse harvest by strata and population. Estimates are followed by the standard error of the estimate, and 95% upper (UCI) and lower (LCI) confidence intervals around the estimate. County estimates of hunters, days and harvest are less reliable than statewide totals.

Sharp-tailed grouse Harvest Estimates,
1999-2011 - Colorado



**2011 Sharp-tailed grouse harvest,
by strata**

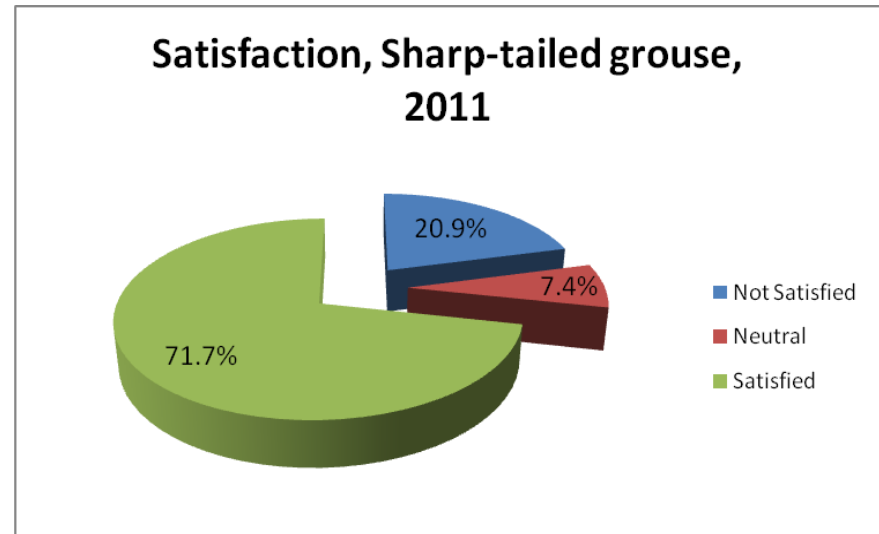
Strata	Hunters	SE (Hunters)	LCL (Hunters)	UCL (Hunters)	Days Hunted	SE (Days Hunted)	LCL (Days Hunted)	UCL (Days Hunted)	Harvest	SE (Harvest)	LCL (Harvest)	UCL (Harvest)
Not Likely	5	3	1	17	17	13	4	65	20	20	4	100
Somewhat Likely	16	6	8	33	44	19	19	98	21	12	7	59
Very Likely	31	8	19	53	125	44	64	245	77	38	31	194
Very Likely for >4 years	65	10	48	88	182	37	123	269	180	48	107	302
Total	117	15	91	150	368	62	266	510	298	66	194	457

**2011 Sharp-tailed grouse harvest,
by county**

County	Hunters	SE (Hunters)	LCL (Hunters)	UCL (Hunters)	Days Hunted	SE (Days Hunted)	LCL (Days Hunted)	UCL (Days Hunted)	Harvest	SE (Harvest)	LCL (Harvest)	UCL (Harvest)
Routt	94	14	71	125	303	58	71	125	260	63	71	125
Moffat	21	6	11	38	54	21	11	38	31	20	11	38
Grand	4	3	1	15	14	12	1	15	0	0	1	15
Jackson	2	2	0	12	9	9	0	12	0	0	0	12
Yuma	2	2	0	12	2	2	0	12	0	0	0	12
Total	117	15	91	150	368	62	266	510	298	66	194	457

Sharp-tailed grouse satisfaction, 2011

Satisfaction	Total	CUM
Strong dissatis.	5.19%	5.19%
Somewhat dissatis.	5.24%	10.43%
Slight dissatis.	10.49%	20.92%
Neutral	7.38%	28.30%
Slightly satisf.	12.68%	40.98%
Somewhat satis.	26.55%	67.53%
Strong satis.	32.47%	100.00%



Sharp-tailed grouse crowding, 2011

Crowding	Total
Not at all	57.71%
Slightly	19.94%
Moderately	18.08%
Extremely	4.27%

