

2015 Sage-grouse Harvest Report

The 2015 Sage-grouse report provides information on the estimated harvest of Sage-grouse. A post-season harvest survey was conducted by phone and email. A stratified random sample of 3,500 potential Sage-grouse hunters was drawn from among Harvest Information Program (HIP) participants. The sample was stratified as follows:

- 1 = Not Likely to hunt
- 2 = Somewhat Likely to hunt
- 3 = Very Likely to hunt
- 4 = Very Likely to hunt for 3 or more years

Harvest Data Summary

The survey contacted 1,497 (42.7% response rate) hunters in 2015. Approximately 8.6% (128) reported hunting Sage-grouse during the season. Fifty-one (51) hunters (39.8%) reported that they successfully harvested Sage-grouse. The number of days hunted ranged from 1 (48 hunters) to 12 (1 hunter) and individual harvest ranged from 1 (12 hunters) to 7 (2 hunters). **Statewide harvest was estimated at 745 ± 349 (435 – 1,134).**

Comparison with 2014 survey results:

Comparing the figures for the Sage-grouse season for both years, the estimated harvest in 2015 is significantly lower than 2014 when an estimated 1,471 ± 853 (619 – 2,323) birds were harvested. Hunter numbers increased in 2015 to **1,291 ± 409 (881 – 1,709)** from 1,098 ± 353 (746 – 1451) in 2014. Total days hunted were similar in 2015 at **2,914 ± 1,015 (1,898 – 3,930)** when compared to 2,929 ± 1,323 (1606 – 4251) in 2014.

Discussion

According to survey data, Sage-grouse harvest decreased by approximately 50% between 2015 and 2014. Total hunter numbers increased by 17.5% while days hunted remained stable between years.

Strata	2013 Hunter Estimate	2014 Hunter Estimate	2015 Hunter Estimate	2013 Harvest Estimate	2014 Harvest Estimate	2015 Harvest Estimate
(1) Not Likely	7	140	396	0	280	66
(2) Somewhat Likely	12	526	468	7	778	324
(3) Very Likely	124	341	343	140	307	234
(4) Very Likely for >3 years	97	91	84	117	107	161

As an additional measure, CPW calculated an estimate of average birds harvested per hunter from 1999-2015. In 2015, hunters averaged 0.61 birds per hunter, suggesting that average hunting success was much lower than the long term average of 1.2 birds per hunter and the 2014 estimate of 1.3 birds per hunter.

Hunter Statistics and Harvest Estimates by Strata and County

The following summary tables provide estimates of hunter numbers, days in the field and Sage-grouse harvest statewide and by county. Estimates are followed by the standard error of the estimate, and 95% upper (UCI)

and lower (LCI) confidence intervals around the estimate. In 2014, Colorado Parks and Wildlife attempted to reduce erroneous harvest location responses by allowing answers that correspond to greater sage grouse occurrence and where legal hunting seasons occur. All other location responses – for instance if a hunter said he hunted Sage-grouse in Yuma County, were cached into an “Unknown” category, and eliminated from the data set.

2015 Sage-grouse Harvest by Strata

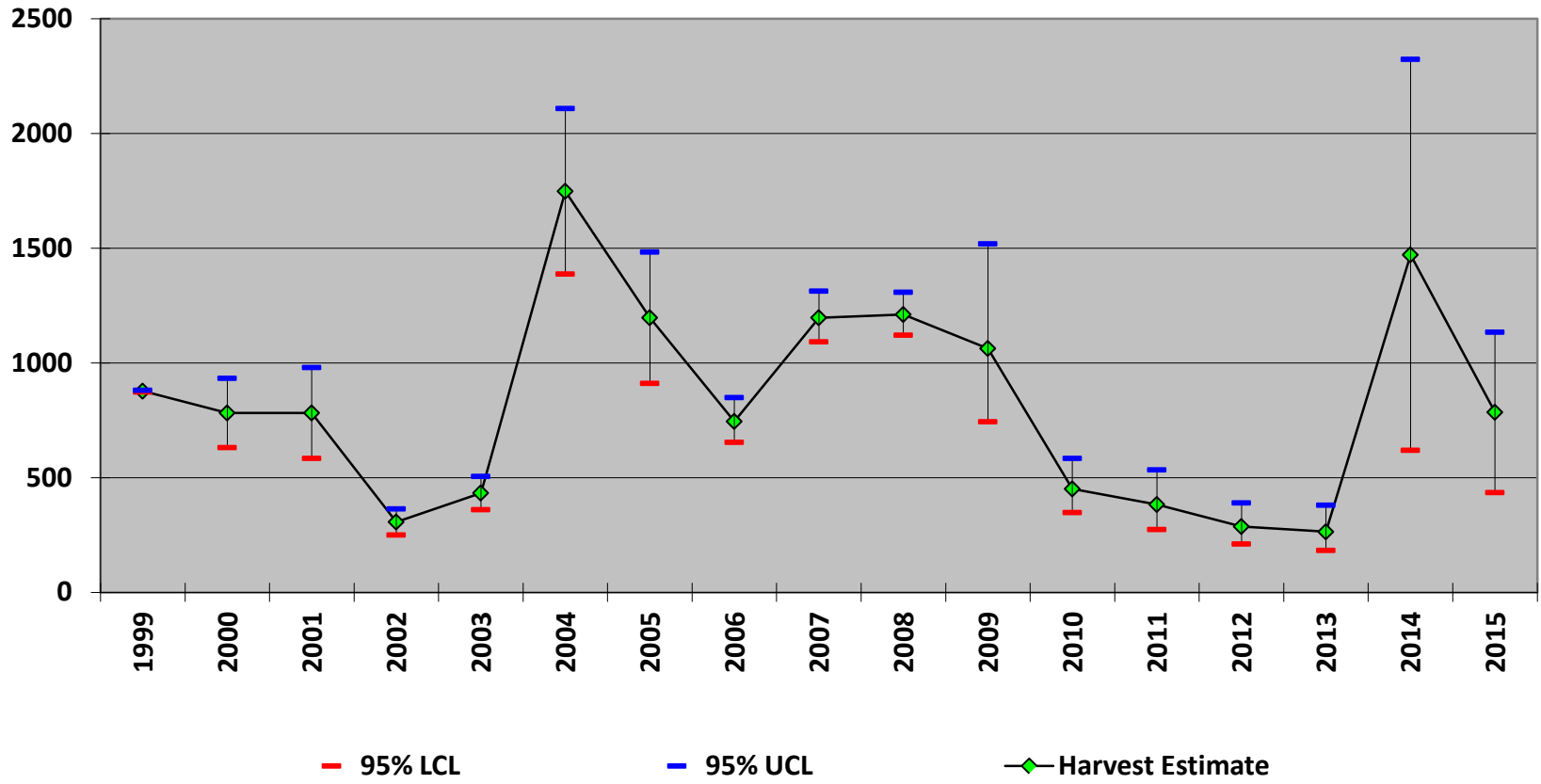
Strata	Hunters	SE(hunters)	LCI Hunters	UCI Hunters	Days Hunted	SE (Days Hunted)	LCI Days	UCI Days	Harvest	SE(harvest)	LCI Harvest	UCI Harvest
(1) Not Likely	396	161	184	853	991	421	446	2203	66	66	13	338
(2) Somewhat Likely	468	127	277	790	828	268	446	1538	324	148	138	759
(3) Very Likely	343	39	275	428	904	135	676	1210	234	67	135	406
(4) Very Likely for >3 years	84	11	65	108	191	36	133	274	161	34	107	241
Total	1291	209	881	1701	2914	518	1898	3930	785	178	435	1134

2015 Sage-grouse Harvest by County

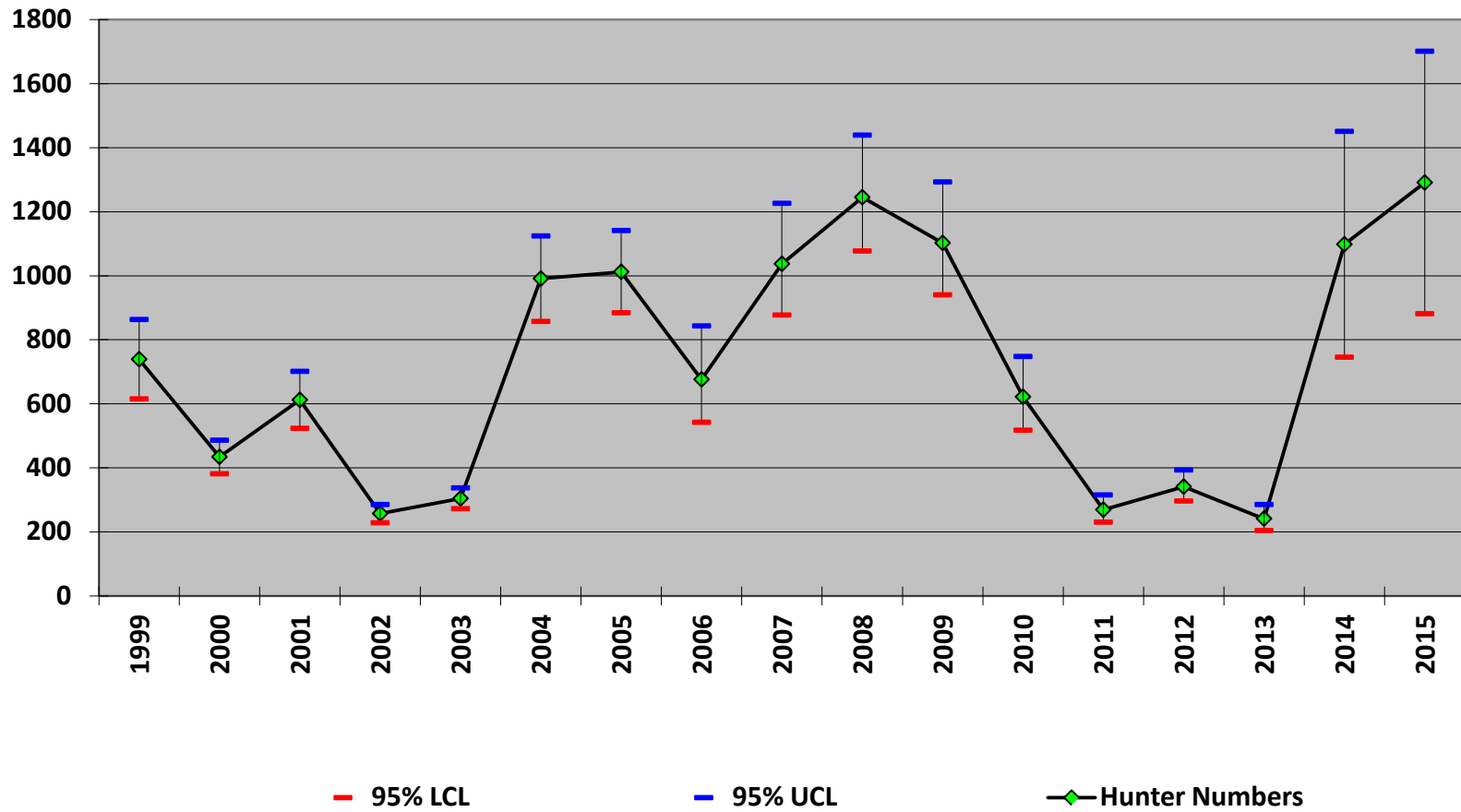
County	Hunters	SE(hunters)	LCI Hunters	UCI Hunters	Days Hunted	SE (Days Hunted)	LCI Days	UCI Days	Harvest	SE(harvest)	LCI Harvest	UCI Harvest
Moffat	661	197	373	1171	396	106	236	662	252	85	132	480
Jackson	388	120	215	701	874	314	442	1731	191	103	71	515
Summit	1276	537	578	2817	474	192	221	1018	132	77	46	383
Grand	492	185	241	1004	569	276	231	1400	107	74	32	366
Rio Blanco	159	53	84	302	143	59	66	312	57	38	17	190
Other	1188	469	564	2505	462	215	194	1099	45	32	13	159
Total	1291	209	881	1701	2914	518	1898	3930	785	178	435	1134

*Hunters could provide up to 3 counties when asked “where did you harvest sage grouse?”

Sage-grouse Harvest Estimates Colorado (1999-2015)



Sage-grouse Hunter Numbers Colorado (1999-2015)



Sage-grouse Hunters and Harvest
Colorado (1999-2015)

