

2021 Sharp-tailed grouse Harvest Report

The 2021 sharp-tailed grouse report provides information on the estimated harvest of mountain sharp-tailed grouse. A stratified random sample of 3,500 sharp-tailed grouse hunters was drawn from among Harvest Information Program (HIP) participants. The sample was stratified as follows:

- 1 = Not likely to hunt
- 2 = Somewhat likely to hunt
- 3 = Very likely to hunt
- 4 = Very likely to hunt \geq 3 years

The post-season survey, conducted by telephone and email, contacted 1,523 (43.5% response rate) hunters. In total, 33 respondents, or 2.1%, reported they had hunted sharp-tailed grouse in 2019 and 15 (9.8%) reported harvesting sharp-tailed grouse. Statewide harvest was estimated at **382 \pm 266.56 (115 – 650)**.

Comparison with 2020 survey results:

Harvest was higher than 2020 when an estimated **264 \pm 114 (150 – 378)** grouse were harvested. Hunter numbers in 21, estimated at **401 \pm 153 (249 – 554)** were slightly lower than 2020 when **487 \pm 201 (286 – 688)** reported hunting. Days hunted were similar in 2021, **1,615 \pm 951 (663 – 2566)** compared to 1,579 \pm 733 (845 – 2313) in 2020.

Hunter Statistics and Harvest Estimates by Strata and County

The following summary tables provide estimates of hunter numbers, days in the field and sharp-tailed grouse harvest statewide and by county. Estimates are followed by the standard error of the estimate, and 95% upper (UCI) and lower (LCI) confidence intervals around the estimate. Summary tables provide estimates of hunter numbers, days in the field and sharp-tailed grouse harvest state and by county. Estimates are followed by the standard error of the estimate, and 95% upper (UCI) and lower (LCI) confidence intervals around the estimate.

**2021 Sharp-tailed grouse harvest,
by strata**

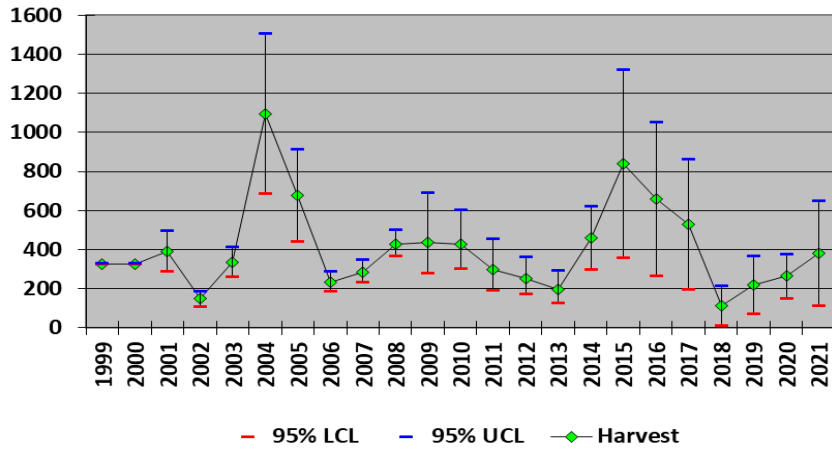
Strata	Hunters	SE (Hunters)	LCL (Hunters)	UCL (Hunters)	Days Hunted	SE (Days Hunted)	LCL (Days Hunted)	UCL (Days Hunted)	Harvest	SE (Harvest)	LCL (Harvest)	UCL (Harvest)
Not Likely	144	51	74	282	504	214	227	1120	72	51	21	251
Somewhat Likely	113	46	53	243	699	421	235	2079	113	113	22	579
Very Likely	90	35	43	189	225	102	97	526	60	42	17	208
Very Likely for >3 years	54	9	38	76	186	47	114	304	137	38	80	233
Total	401	78	249	554	1615	485	663	2566	382	136	115	650

**2021 Sharp-tailed grouse harvest,
by county**

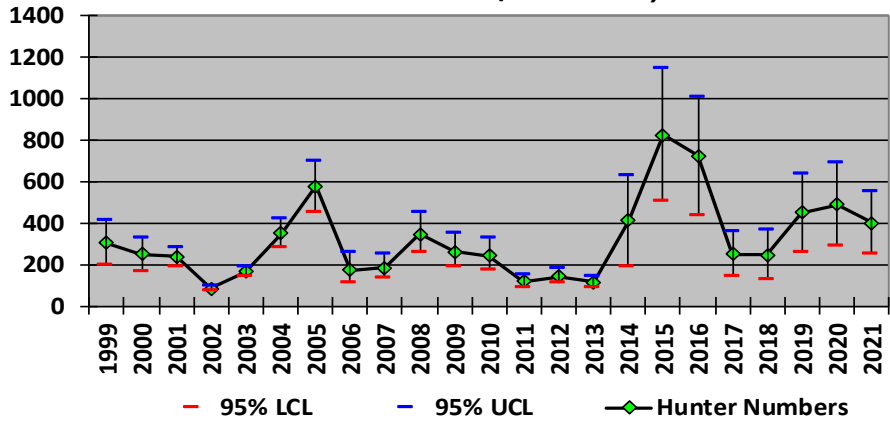
County	Hunters	SE (Hunters)	LCL (Hunters)	UCL (Hunters)	Days Hunted	SE (Days Hunted)	LCL (Days Hunted)	UCL (Days Hunted)	Harvest	SE (Harvest)	LCL (Harvest)	UCL (Harvest)
Moffat	57	31	21	154	152	90	52	445	8	8	2	42
Rio Blanco	72	51	21	251	126	97	33	480	0	0	0	0
Routt	664	165	411	1072	956	425	416	2196	338	132	162	707
Unknown	348	156	151	805	381	197	147	991	36	36	7	184
Total	401	78	249	554	1615	485	663	2566	382	136	115	650

*Hunters could provide up to 3 counties when asked “where did you harvest sharp-tailed grouse?”

**Sharp-tailed grouse Harvest Estimates,
Colorado (1999-2021)**



**Sharp-tailed grouse Hunter Numbers
Colorado (1999-2021)**



Sharp-tailed grouse Hunters and Harvest
Colorado (1999-2021)

