

2022 Sage-grouse Harvest Report

The 2022 Sage-grouse report provides information on the estimated harvest of Sage-grouse. A post-season harvest survey was conducted by phone and email. A stratified random sample of 3,500 potential Sage-grouse hunters was drawn from among Harvest Information Program (HIP) participants. The sample was stratified as follows:

- 1 = Not Likely to hunt
- 2 = Somewhat Likely to hunt
- 3 = Very Likely to hunt
- 4 = Very Likely to hunt for 3 or more years

Harvest Data Summary

The survey contacted 1,597 (45.6% response rate) hunters in 2022. Approximately 8.2% (132) reported hunting Sage-grouse during the season. Fifty-six (56) hunters (42%) reported that they successfully harvested sage-grouse. Statewide harvest was estimated at **822 ± 333 (489 – 1154)**.

Comparison with 2021 survey results:

Comparing the figures for the Sage-grouse season for both years, the estimated harvest in 2022 is slightly higher than 2021 when an estimated 727 ± 399 (327 – 1,126) birds were harvested. Hunter numbers increased to **963 ± 196 (768 – 1,158)** from 745 ± 168 (577 – 913) in 2021. Total days hunted increased significantly in 2022, when hunters reported **3,196 ± 984 (2,213 – 4,180)** days compared to 2,074 ± 399 (1,424 – 2,725) in 2021.

Hunter Statistics and Harvest Estimates by Strata and County

The following summary tables provide estimates of hunter numbers, days in the field and Sage-grouse harvest statewide and by county. Estimates are followed by the standard error of the estimate, and 95% upper (UCI) and lower (LCI) confidence intervals around the estimate.

2022 Sage-grouse Harvest by Strata

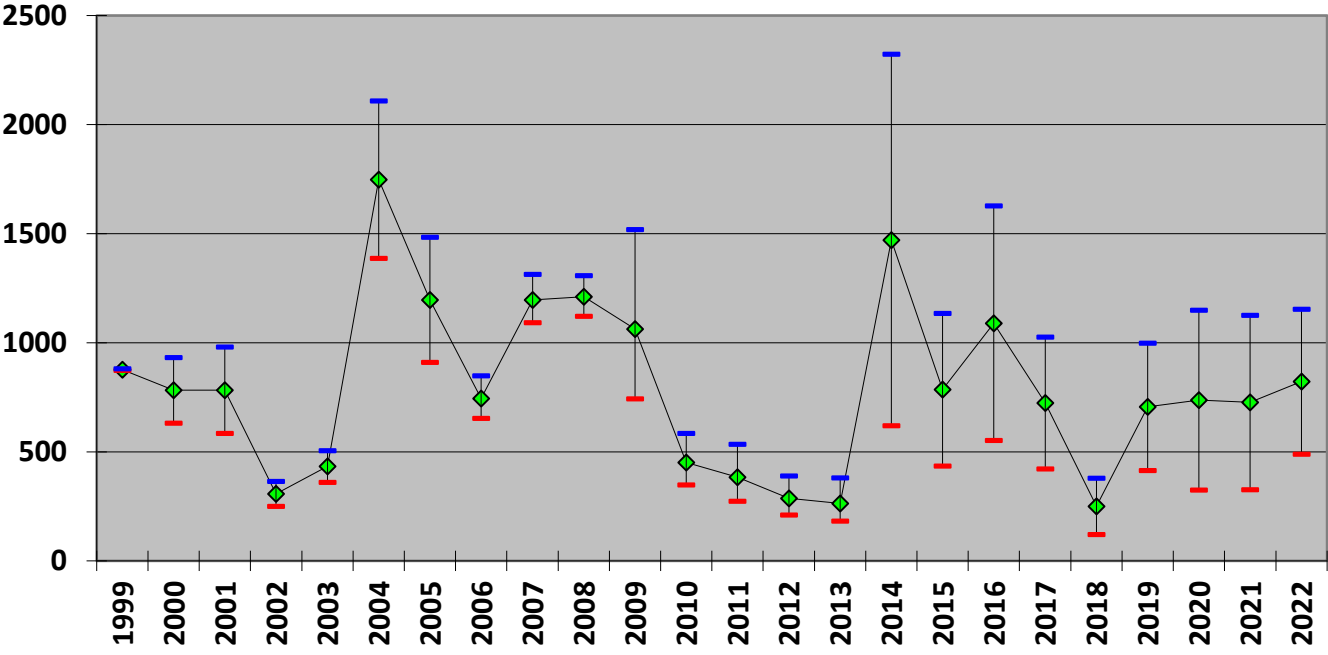
Strata	Hunters	SE(hunters)	LCI		Days Hunted	SE (Days Hunted)		UCI		Harvest	SE(harvest)	LCI		CV %
			Hunters	Hunters		Days	Days	Days	Days			Harvest	Harvest	
(1) Not Likely	151	53	77	295	736	110	550	985	151	345	11	2135		
(2) Somewhat Likely	382	76	260	561	1177	108	982	1409	239	312	34	1690		
(3) Very Likely	332	35	269	409	1045	65	926	1180	322	183	114	910		
(4) Very Likely for >3 years	98	11	79	123	239	26	192	296	110	41	55	223		
Total	963	100	768	1158	3196	502	2213	4180	822	170	489	1154	21%	

2022 Sage-grouse Harvest by County*

County	Hunters	SE(hunters)	LCI		Days Hunted	SE (Days Hunted)		UCI		Harvest	SE(harvest)	LCI		UCI
			Hunters	Hunters		Days	Days	Days	Days			Harvest	Harvest	
Moffat	711	134	493	1026	672	175	406	1110	332	88	200	552		
Grand	522	121	333	819	858	246	494	1489	230	110	95	561		
Jackson	284	47	205	393	614	158	374	1008	85	28	46	159		
Rio Blanco	306	136	133	704	257	146	91	726	83	67	21	330		
Unknown	471	189	221	1004	670	335	266	1691	60	57	12	288		
Summit	308	134	136	696	125	48	60	260	31	20	10	99		
Total	963	100	768	1158	3196	502	2213	4180	822	170	489	1154		

*Hunters could provide up to 3 counties when asked “where did you harvest Sage-grouse?”

Sage-grouse Harvest Estimates, Colorado (1999-2022)



- 95% LCL - 95% UCL - Harvest

Sage-grouse Hunters and Harvest
Colorado (1999-2022)

