

2022 Sharp-tailed grouse Harvest Report

The 2022 sharp-tailed grouse report provides information on the estimated harvest of mountain sharp-tailed grouse. A stratified random sample of 3,500 sharp-tailed grouse hunters was drawn from among Harvest Information Program (HIP) participants. The sample was stratified as follows:

- 1 = Not likely to hunt
- 2 = Somewhat likely to hunt
- 3 = Very likely to hunt
- 4 = Very likely to hunt \geq 3 years

The post-season survey, conducted by telephone and email, contacted 1,613 (46.1% response rate) hunters. In total, 47 respondents, or 2.9%, reported they had hunted sharp-tailed grouse in 2022 and 22 (46.8%) reported harvesting sharp-tailed grouse. Statewide harvest was estimated at **722 \pm 472 (250 – 1195)**.

Comparison with 2021 survey results:

Harvest was higher than 2021 when an estimated 382 \pm 267 (115 – 650) grouse were harvested. Hunter numbers in 22, estimated at **536 \pm 164 (372 – 700)** were higher than 2021 when **401 \pm 153 (249 – 554)** reported hunting. Days hunted were higher in 2022, **1,794 \pm 698 (1097 – 2,492)** compared to **1,615 \pm 951 (663 – 2566)** in 2021.

Hunter Statistics and Harvest Estimates by Strata and County

The following summary tables provide estimates of hunter numbers, days in the field and sharp-tailed grouse harvest statewide and by county. Estimates are followed by the standard error of the estimate, and 95% upper (UCI) and lower (LCI) confidence intervals around the estimate. Summary tables provide estimates of hunter numbers, days in the field and sharp-tailed grouse harvest state and by county. Estimates are followed by the standard error of the estimate, and 95% upper (UCI) and lower (LCI) confidence intervals around the estimate.

**2022 Sharp-tailed grouse harvest,
by strata**

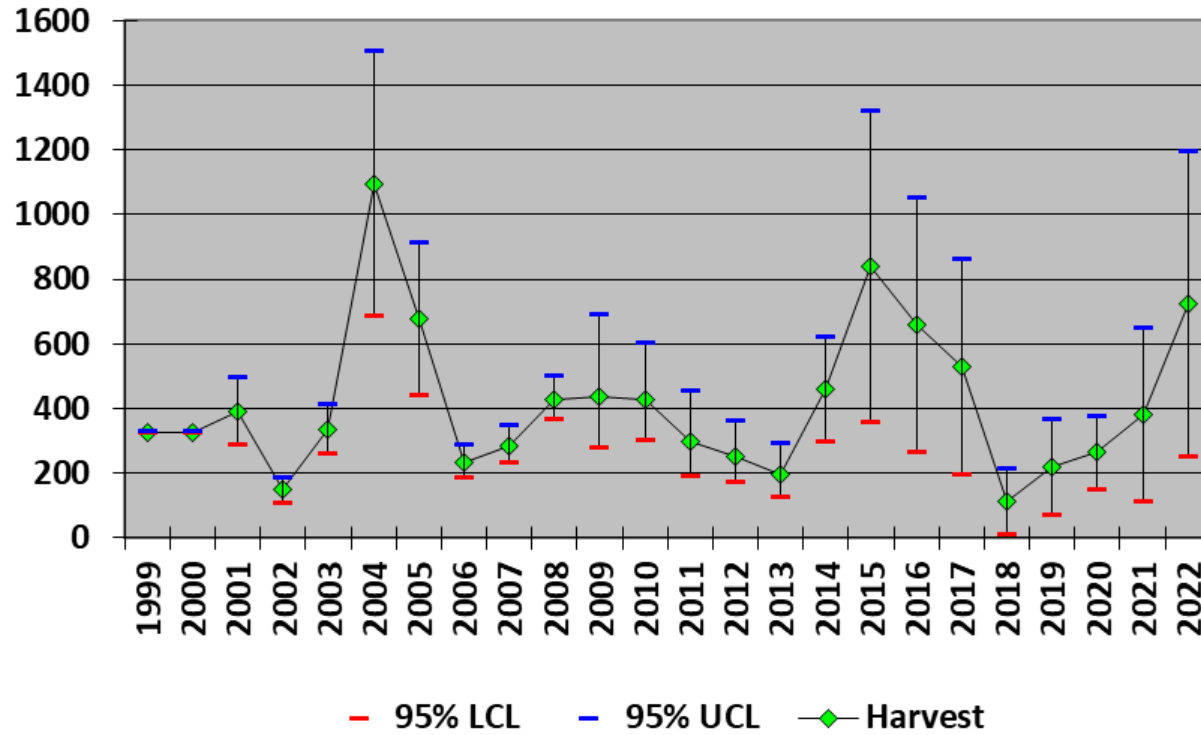
Strata	Hunters	SE (Hunters)	LCL (Hunters)	UCL (Hunters)	Days Hunted	SE (Days Hunted)	LCL (Days Hunted)	UCL (Days Hunted)	Harvest	SE (Harvest)	LCL (Harvest)	UCL (Harvest)
Not Likely	95	39	44	205	253	109	113	570	317	217	94	1068
Somewhat Likely	205	56	121	347	709	255	358	1406	47	35	13	174
Very Likely	196	48	121	316	632	215	331	1209	151	81	56	404
Very Likely for >3 years	41	7	29	57	200	57	116	345	208	58	122	355
Total	536	84	372	700	1794	356	1097	2492	722	241	250	1195

**2022 Sharp-tailed grouse harvest,
by county**

County	Hunters	SE (Hunters)	LCL (Hunters)	UCL (Hunters)	Days Hunted	SE (Days Hunted)	LCL (Days Hunted)	UCL (Days Hunted)	Harvest	SE (Harvest)	LCL (Harvest)	UCL (Harvest)
Moffat	144	46	79	265	539	236	237	1227	76	50	23	246
Rio Blanco	169	71	77	372	211	104	85	525	274	212	72	1048
Routt	952	191	646	1404	1013	248	631	1626	372	107	214	646
Unknown	63	63	12	322	32	32	6	161	0	0	0	0
Total	536	84	372	700	1794	356	1097	2492	722	241	250	1195

*Hunters could provide up to 3 counties when asked “where did you harvest sharp-tailed grouse?”

Sharp-tailed grouse Harvest Estimates, Colorado (1999-2022)



Sharp-tailed grouse Hunters and Harvest
Colorado (1999-2022)

