

## 2023 Sharp-tailed grouse Harvest Report

The 2023 sharp-tailed grouse report provides information on the estimated harvest of mountain sharp-tailed grouse. A stratified random sample of 3,500 sharp-tailed grouse hunters was drawn from among Harvest Information Program (HIP) participants. The sample was stratified as follows:

- 1 = Not likely to hunt
- 2 = Somewhat likely to hunt
- 3 = Very likely to hunt
- 4 = Very likely to hunt  $\geq$  3 years

The post-season survey, conducted by telephone and email, contacted 1,582 (45.2% response rate) hunters. In total, 44 respondents, or 2.7%, reported they had hunted sharp-tailed grouse in 2023 and 21 (47.7%) reported harvesting sharp-tailed grouse. Statewide harvest was estimated at **638  $\pm$  355 (284 – 992)**.

### Comparison with 2022 survey results:

Harvest was slightly lower than 2022 when an estimated 722  $\pm$  472 (250 – 1195) grouse were harvested. Hunter numbers in 2023, estimated at **534  $\pm$  168 (366 – 702)** were similar to 2022 when **536  $\pm$  164 (372 – 700)** reported hunting. Days hunted were similar in 2023, **1,801  $\pm$  868 (933 – 2669)** compared to **1,794  $\pm$  698 (1097 – 2,492)** in 2022.

### Hunter Statistics and Harvest Estimates by Strata and County

The following summary tables provide estimates of hunter numbers, days in the field and sharp-tailed grouse harvest statewide and by county. Estimates are followed by the standard error of the estimate, and 95% upper (UCI) and lower (LCI) confidence intervals around the estimate. Summary tables provide estimates of hunter numbers, days in the field and sharp-tailed grouse harvest state and by county. Estimates are followed by the standard error of the estimate, and 95% upper (UCI) and lower (LCI) confidence intervals around the estimate.

**2023 Sharp-tailed grouse harvest,  
by strata**

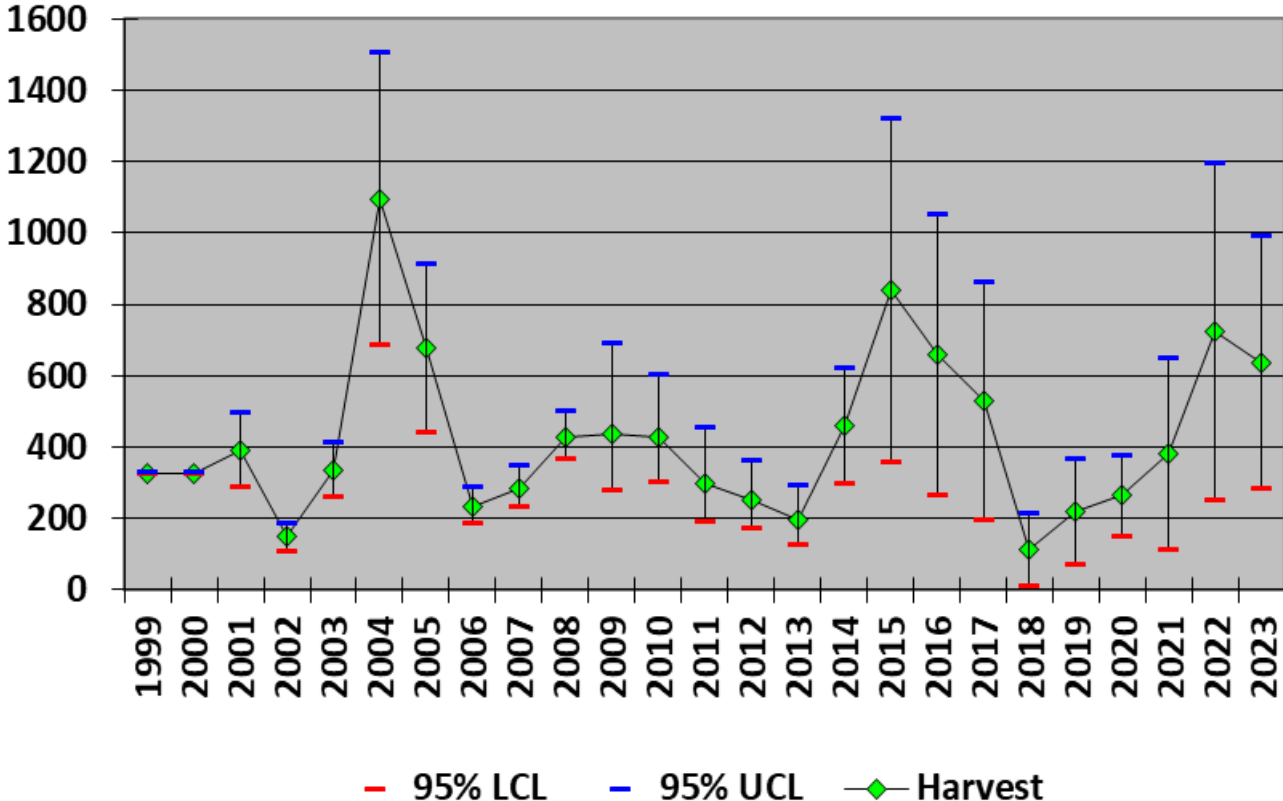
<b>Strata</b>	<b>Hunters</b>	<b>SE (Hunters)</b>	<b>LCL (Hunters)</b>	<b>UCL (Hunters)</b>	<b>Days Hunted</b>	<b>SE (Days Hunted)</b>	<b>LCL (Days Hunted)</b>	<b>UCL (Days Hunted)</b>	<b>Harvest</b>	<b>SE (Harvest)</b>	<b>LCL (Harvest)</b>	<b>UCL (Harvest)</b>
Not Likely	153	51	81	289	784	385	315	1949	256	145	90	722
Somewhat Likely	166	52	91	303	466	178	226	960	83	60	23	295
Very Likely	180	45	111	291	456	125	270	773	207	81	99	433
Very Likely for >3 years	35	7	23	52	95	29	53	172	92	37	43	197
<b>Total</b>	<b>534</b>	<b>86</b>	<b>366</b>	<b>702</b>	<b>1801</b>	<b>443</b>	<b>933</b>	<b>2669</b>	<b>638</b>	<b>181</b>	<b>284</b>	<b>992</b>

**2023 Sharp-tailed grouse harvest,  
by county**

<b>County</b>	<b>Hunters</b>	<b>SE (Hunters)</b>	<b>LCL (Hunters)</b>	<b>UCL (Hunters)</b>	<b>Days Hunted</b>	<b>SE (Days Hunted)</b>	<b>LCL (Days Hunted)</b>	<b>UCL (Days Hunted)</b>	<b>Harvest</b>	<b>SE (Harvest)</b>	<b>LCL (Harvest)</b>	<b>UCL (Harvest)</b>
Moffat	121	42	63	233	358	153	160	799	107	53	42	269
Rio Blanco	62	44	18	216	62	44	18	216	34	34	7	174
Routt	812	184	524	1260	807	217	480	1356	489	169	253	945
Unknown	325	145	140	751	435	344	111	1706	0	0	NA	NA
<b>Total</b>	<b>534</b>	<b>86</b>	<b>366</b>	<b>702</b>	<b>1801</b>	<b>443</b>	<b>933</b>	<b>2669</b>	<b>638</b>	<b>181</b>	<b>284</b>	<b>992</b>

\*Hunters could provide up to 3 counties when asked “where did you harvest sharp-tailed grouse?”

### Sharp-tailed grouse Harvest Estimates, Colorado (1999-2023)



### Sharp-tailed grouse Hunters and Harvest Colorado (1999-2023)

