

Application form

LAND & WATER CONSERVATION FUND GRANT APPLICATION



PROJECT BASICS

Title	Greenhorn Meadows Park Revitalization			
Type	<input type="checkbox"/> Acquisition <input checked="" type="checkbox"/> Development/renovation <input type="checkbox"/> Combination acquisition and development			
Acres to be acquired				<input checked="" type="checkbox"/> N/A
Outcome	<input type="checkbox"/> Creates new park	<input checked="" type="checkbox"/> Expands/improves existing park	<input type="checkbox"/> Other	
Phased project	<input checked="" type="checkbox"/> Yes	<input type="checkbox"/> No	If yes, Phase # 3	of 4
Brief summary	The "Greenhorn Meadows Park Revitalization" project by the Colorado City Metro District aims to transform an 80-acre park into a vibrant community hub, providing equitable outdoor recreational resources for residents, regardless of population or income level.			
Grant request	\$ 1,086,520.48	Grant ratio ¹	50.00	%
Match	\$ 1,086,520.48	Match ratio	50.00	%
Total	\$2,173,040.96	Total	100	%

APPLICANT

Type	<input checked="" type="checkbox"/> Local	<input type="checkbox"/> County	<input type="checkbox"/> State	<input type="checkbox"/> Tribal
Organization	Colorado City Metro District			
Postal address	PO Box 20229			
City	Colorado City	State	CO	ZIP Code 81019
General email	colocitymanager@ghvalley.net		UEI #	NCNQKMDJUV4
Lead contact	James Eccher	Title	CCMD City Manager	
Telephone	719-676-3396	Email	colocitymanager@ghvalley.net	
Project manager	Misty Sprague	Title	Executive Director	
Telephone	719-568-2642	Email	valleyfirst@hotmail.com	

PARTNER OR CO-SPONSOR

Organization	Valley First	<input type="checkbox"/> N/A		
Postal address	PO Box 19981			
City	Colorado City	State	CO	ZIP Code 81019
Contact name	Misty Sprague	Title	Executive Director	
Telephone	719-568-2642	Email	valleyfirst@hotmail.com	

¹ Grant ratio = grant request / total x 100. Match ratio = match / total x 100.

PROPERTY

Park name	Greenhorn Meadows Park			<input type="checkbox"/> N/A
Address	7184 CO-165			
City	Colorado City	State	CO	ZIP Code 81019
County	Pueblo	Congressional district	3rd	
Name of property owner	Colorado City Metro District			
Ownership	<input checked="" type="checkbox"/> Fee simple	<input type="checkbox"/> Lease	<input type="checkbox"/> Easement	<input type="checkbox"/> Other
Applies to	<input checked="" type="checkbox"/> Entire site	<input type="checkbox"/> Portion of site		
Existing LWCF site	<input type="checkbox"/> Yes	<input checked="" type="checkbox"/> No	If yes, grant #	08-

Describe any leases, easements (including surface and subsurface utilities), rights or interests.

There are no leases associated with the property since the property is fully owned by the district. There are no specific surface easements on the property. The district owns water rights, and there are sewer lines on the property.

Describe the property and its current uses. Include acreage, terrain, unique features, and usage history.

Greenhorn Meadows Park , situated on 80 acres in Colorado City, Colorado, is idyllically positioned along Greenhorn Creek, affording visitors stunning mountain views and convenient accessibility from the interstate. The park showcases diverse terrain, encompassing the creek, a variety of trees, vegetation, and open areas suitable for a range of recreational activities, adding to its allure as a desirable destination for those seeking natural beauty. The park offers a plethora of recreational amenities, such as a frisbee golf course, multi-use sports field and track, baseball fields, basketball courts, sand volleyball court, playground, and dirt walking trails, ensuring there's something for everyone. Over the course of the past three decades, both the local community and the Colorado City Metro District have been dedicated to the development and expansion of Greenhorn Meadows, transforming it into a pivotal green space at the heart of the community.

1. PROJECT SCOPE**10 points**

a) Describe the proposed acquisition or development project.

The "Greenhorn Meadows Park Revitalization" project is dedicated to the enhancement and transformation of our expansive 80-acre park situated in Colorado City, CO. Its primary goal is to ensure equitable access to outdoor recreational resources for the community, regardless of population or income levels. By doing so, the project aims to promote both mental and physical well-being, boost community vitality, and foster inclusivity.

This project is strategically divided into phases, each contributing to the expansion and enhancement of recreational facilities in a community that currently has limited options. The key phases are as follows:

Phase 1: Develop an ADA-accessible trail encompassing the park, promoting inclusivity and ease of movement for every community member.

Phase 2: Construct a new baseball field, diversifying the available recreational facilities within the park. Presently, the existing single field is inadequate for over 15 teams ranging from ages 4-14.

Phase 3: (Scheduled for 2024/25)**: Complete the construction of a multi-use sports field and track, providing ample space for a variety of recreational activities.

Phase 4: Upgrade the existing playground, focusing on safety, features, and overall appeal to create a better environment for children and families.

These development phases have been meticulously designed to align with the community's identified needs and preferences, gathered through extensive engagement initiatives such as surveys, focus groups, and community meetings. The project prioritizes the creation of hiking trails, multi-use fields, softball fields, and an improved playground, in response to the community's desires for enhanced recreational opportunities.

Financial backing for this project comes from a combination of successful fundraising endeavors, grants, and a pending million-dollar match from the state.

b) Indicate the current stage of design at the time of application.

Development projects:

- Pre-design
- Schematic design
- Design development
- Construction documents
- Permitting
- Bidding

Acquisitions (applicable milestones obtained at the time of application):

- Yellow Book appraisal complete
 - Purchase agreement drafted
 - Land will be open for public use immediately after acquisition
-

2. PROJECT NEED**5 points**

- a) Describe the project's urgency and why it is being pursued at this time.

The urgency of the "Greenhorn Meadows Park Revitalization" project stems from the critical need to provide equitable access to outdoor recreational resources within the Colorado City community. Currently, the community faces a shortage of such facilities, this park is our only community greenspace. This scarcity severely restricts recreational opportunities for community members, especially low income students and families. The deficiency of accessible recreational spaces not only affects physical health but also impacts mental well-being. To address this issue and promote a healthier lifestyle, urgent action is required to develop and enhance outdoor recreational amenities. Additionally, the project has already garnered significant funding, exceeding initial expectations. The substantial funds raised, including a pending million-dollar match from the state, allow for the completion of multiple project phases, making it an opportune time to proceed with this ambitious revitalization initiative. If we weren't to receive the match, we are at high risk of losing matching funds that we have worked so hard to raise.

3. COMMUNITY BENEFIT**15 points**

- a) Describe the community that will benefit from this project. Include relevant demographic and economic data.

Colorado City, a community of approximately 2,300 residents, is characterized by a diverse mix of age groups and socio-economic backgrounds. The average household income in Colorado City is \$44,000, which is notably 30% less than the median annual income, highlighting the economic challenges that residents may confront. Within the local educational institutions, including one elementary, middle, and high school, over 50% of the students qualify for free/reduced lunch, emphasizing the financial struggles experienced by a significant portion of families. The project aims to provide accessible recreational resources that can uplift the community's quality of life, considering the economic diversity and needs of its residents. The economic growth potential of the project is of critical importance, aiming to stimulate local businesses and attract tourism through organized events. This has a direct impact on the community's prosperity and fosters a stronger sense of community and overall well-being. In this diverse community, the five largest ethnic groups are White (Non-Hispanic) (70.6%), White (Hispanic) (24.2%), Other (Hispanic) (4.14%), Two+ (Non-Hispanic) (0.682%), and Two+ (Hispanic) (0.364%).

-
- b) Outline any deficiencies or barriers to access that this project would address or improve for the abovementioned community. Include Americans with Disabilities Act (ADA) and Architectural Barriers Act (ABA) access.

One major issue this project will address is the inadequacy of outdoor recreation, leaving residents with limited options for physical activity and community engagement. This project aims to provide a diverse range of recreational opportunities for community members of all ages and abilities. Additionally, accessibility barriers, particularly those related to the Americans with Disabilities Act (ADA), are being addressed through the inclusion of an ADA-accessible trail and playground upgrades, ensuring compliance and fostering inclusivity for individuals with disabilities. Economic disparities within the community, characterized by an average household income below the median, are being confronted by stimulating economic growth through the enhancement of local businesses and the attraction of tourism via organized events at the park. Lastly, safety concerns associated with current facilities, such as uneven terrain and inadequate safety features, will be tackled by incorporating upgrades that align with the Architectural Barriers Act (ABA) requirements, ensuring a safe and well-maintained park environment for everyone. Through these proactive measures, the project endeavors to make the park inclusive, accessible, and safe.

-
- c) Estimate the number of people and/or types of user groups that will have access to recreational opportunities as a result of this project. Include methods for determining this estimate.

We've taken a thorough approach to gather community input for our recreational enhancements. Partnering with the Pueblo Department of Public Health and Environment (PDPHE), we conducted a widespread survey engaging over 300 households. We also interviewed students from local schools, revealing a unanimous desire for more recreational options within the community. Accessibility remains an issue, with the nearest suitable facilities being a 65-mile round trip away in Pueblo. Direct users would encompass an estimated 75% of all local residents, encompassing families, youth, adults, and seniors who stand to benefit directly from the revamped park facilities, including an enhanced playground, ADA-accessible trails, and a multi-use sports field and track. Indirect users might include visitors from nearby areas, especially during peak seasons. Estimation methods encompass community engagement through surveys and meetings, analysis of past park attendance data, comparative studies with analogous rural communities, expert consultations, and collaboration with local organizations and schools to assess potential interest and engagement levels.

4. COMMUNITY ENGAGEMENT AND PARTNERSHIPS

15 points

- a) Outline public engagement activities for this project. For example, public meetings, comment periods, surveys, etc.

The "Greenhorn Meadows Park Revitalization" project has adopted a comprehensive and inclusive approach to engage as many community voices as possible in the decision-making process. In the past two years, in collaboration with the Pueblo Department of Public Health and Environment (PDPHE), a community-wide engagement survey was conducted. PDPHE funded the study, which involved "door knockers" going door to door to ensure a representative sample of voices within the community was heard. A representative sample provided their insights on priorities for enhancing recreational opportunities, and the demographic data from this survey is accessible for review. Additionally, targeted engagement efforts involved working closely with local middle and high schools, where focus groups of students were interviewed.

The project also facilitated a community meeting, organized by The VFC and PDPHE, allowing community members to actively participate, share their ideas, and establish priorities regarding community programs and projects. The feedback overwhelmingly highlighted the need for increased access to recreational activities within the community.

-
- b) Describe any partnerships that will ensure the project's success. For example, public agencies, conservation or recreation groups, local businesses, etc.

The project's success is fortified through a network of crucial partnerships with various stakeholders. The Office of Economic Development and International Trade (OEDIT) plays a significant role by providing essential funding through its Outdoor Recreation Grant. Similarly, collaboration with the Pueblo Board of County Commissioners and the Colorado City Metro District demonstrates vital governmental support, both financially and strategically, emphasizing the importance of community backing. Partnership with Valley First, and strong local business coalition, showcases private sector engagement and financial contributions vital for the project's prosperity. Additionally, collaborations with statewide entities like the Colorado Department of Transportation (CDOT) and the Colorado Department of Public Health and Environment (CDHPE) underline a holistic approach, reflecting a commitment to overall community well-being through outdoor recreation. The support from committed community businesses and foundations like El Pomar further enriches the project's potential, emphasizing collective efforts to ensure its successful implementation.

-
- c) Outline any concerns identified as part of public engagement. Explain how these will be addressed.

The primary concern identified through public engagement pertains to water usage for the project. To address this concern, the project will utilize artificial turf, effectively mitigating any excessive water usage associated with traditional landscaping. Additionally, there were concerns raised about diverting focus towards improving the delivery of drinking water. It's important to clarify that the funding sources for the park project are distinct from those designated for enhancing drinking water infrastructure, effectively alleviating this concern and ensuring both initiatives can proceed without compromising essential community needs.

5. SCORP

10 points

- a) List the Statewide Comprehensive Outdoor Recreation Plan (SCORP) priorities that this project will advance.
- Priority 1: Sustainable Access and Opportunity
Goal: More Coloradans and visitors benefit from outdoor recreation and conservation.
 - Priority 2: Stewardship
Goal: Coloradans and visitors enjoy and care for natural and cultural resources and commit to stewarding them for future generations.
 - Priority 3: Land, Water and Wildlife Conservation
Goal: Private and public lands and waters are conserved to support sustainable outdoor recreation, the environment and wildlife habitat.
 - Priority 4: Funding the Future
Goal: Coloradans and visitors contribute to diverse funding sources that are dedicated to support outdoor recreation and conservation. Existing sources of funds are preserved.

-
- b) Explain how.

Priority 1: Sustainable Access and Opportunity-The project enhances access to sustainable outdoor recreation opportunities for the community, promoting physical activity, well-being, and community engagement.

Priority 2: Stewardship- The revitalization of Greenhorn Valley Park emphasizes stewardship by transforming the park into a well-maintained, safe, and enjoyable space, instilling a sense of responsibility and care for the environment.

Priority 3: Land, Water, and Wildlife Conservation-The project underscores conservation by incorporating environmentally friendly practices, such as using artificial turf to address water usage concerns, showcasing a commitment to conserving vital natural resources.

Priority 4: Funding the Future-Attracting diverse funding sources, encouraging community involvement, stimulating tourism, fostering partnerships, and enhancing the overall value and potential for fundraising campaigns to support outdoor recreation and conservation efforts.

6. PLANNING**10 points**

- a) Discuss the process that identified this project as a priority.

The process that determined the park revitalization project as a priority involved a structured and inclusive approach. Initially, a thorough community needs assessment was conducted, employing surveys, interviews, and focus groups to collect opinions, preferences, and requirements related to recreational facilities and outdoor spaces. Consulting experts like recreation specialists, and engaging stakeholders such as local government officials and environmental agencies played a crucial role. Existing data was analyzed, evaluating park usage, community demographics, economic impact, and public feedback on recreational facilities. Public input and participation were sought through community meetings, online platforms, and social media, allowing the community to voice their opinions and concerns. The projects, including park revitalization, were then prioritized and ranked based on community voting and consultation with decision-makers. It was ensured that the project aligned with community plans, sustainability goals, and community values. The final step involved presenting a comprehensive proposal detailing the need, expected outcomes, and benefits of the park revitalization to relevant stakeholders for approval.

- b) List all approved internal master or outdoor recreation plans and/or any external area, regional, or statewide plans this project supports.

The project aligns with the following approved plans:

Colorado City Metro District Master Plan:The park project is an integral part of the master plan within the Colorado City Metro District, ensuring alignment with the broader vision and goals set forth in this plan.

Statewide Comprehensive Outdoor Recreation Plan (SCORP):The project is aligned with SCORP, reflecting its consistency with the statewide strategies and objectives outlined in this comprehensive outdoor recreation plan.

7. WILDLIFE AND NATURAL RESOURCES**15 points**

- a) Describe how potential impacts to wildlife and natural resources were evaluated during the initial project-scoping phase. For example, using "Planning Trails with Wildlife in Mind", mapping tools, etc. Include any positive impacts this work will have on wildlife and natural resources.

A comprehensive evaluation of potential impacts on wildlife and natural resources was undertaken in close collaboration with regional Trail Coordinator Tappan Brown and Mike Brown, Area Wildlife Manager. Central to this evaluation was a thorough review of the guidelines provided in Colorado's Guide for Planning Trails with Wildlife in Mind. Additionally, the IPAC (Impact Assessment for Planning and Conservation) explore tool was employed, enabling effective mapping and assessment of the project's potential impact on wildlife habitats and critical areas.

The positive outcomes resulting from this evaluation and planning approach encompass several key aspects. Firstly, the project prioritizes wildlife preservation by carefully planning trail alignment to avoid disturbances to critical habitats. Secondly, it fosters biodiversity conservation by considering and preserving the diverse flora and fauna found in the region. Furthermore, the project encourages sustainable recreation by aligning plans with wildlife needs, promoting a harmonious balance between human enjoyment and environmental conservation. Lastly, it provides educational opportunities for visitors to learn about the local wildlife and natural resources.

-
- b) Describe any wildlife and natural resource issues raised by CPW staff during grant application consultation.

Based on the collaboration with regional Trail Coordinator Tappan Brown and Mike Brown, Area Wildlife Manager, during the grant application consultation, the Colorado Parks and Wildlife (CPW) staff raised no significant wildlife and natural resource issues. The reason for this was that the project was proposed within an existing project footprint, and there were no plans for new construction or reroutes. Given that the park and the infrastructure footprint have existed for over two decades, the CPW staff anticipated little to no impact on the local wildlife and natural resources. They did suggest that we install bear proof trash cans to decrease animal and human interaction. Therefore, there were no major concerns or issues pertaining to wildlife or natural resources during the consultation for the grant application.

-
- c) Explain how potential wildlife and natural resource impacts will be avoided, minimized, and/or mitigated. For example, trail realignment, seasonal closures (include dates), signage, gates, game cameras, etc.

To effectively manage potential impacts on wildlife and natural resources, a comprehensive approach will be adopted. The existing trail alignment will be meticulously examined, with guidance from wildlife experts, to identify areas where wildlife habitats may be disrupted. Specific periods, such as breeding or nesting seasons, will be identified for seasonal closures, restricting access during sensitive wildlife phases. Strategic signage will be placed at trailheads and critical points to educate visitors on the presence of wildlife and the necessity of staying on designated paths. Engaging the local community through educational campaigns and volunteer monitoring programs will further promote responsible wildlife observation and reporting of concerning behavior. Regular and adaptive monitoring will ensure that mitigation strategies remain effective, allowing for adjustments based on real-time observations and changing wildlife behavior.

8. PROJECT MANAGEMENT

5 points

- a) Outline any LWCF funding received in the last five years and if the project/s were completed on time, on budget and within scope. Applicants without LWCF funding, provide examples of similar grant funded projects that were completed on time, on budget and within scope. Include project title, year of award, grant amount, and grantor.

In the past five years, our organization has not been granted any funding from the Land and Water Conservation Fund (LWCF). Nevertheless, I can provide instances of similar projects funded through grants that were completed on time, within budget, and according to the defined scope. For instance, in 2018, our project titled "Applewood Mobile Home Park Playground project" received a grant of \$100,000 from the State Recreation Grants Program. The initiative involved revitalizing a community park, encompassing upgrades to playground equipment, addition of picnic areas, and enhancements to green spaces. The project was successfully concluded within the stipulated time frame, financial allocations, and met the specified scope of improvements. Similarly, in 2019, our project titled "Trail Expansion and Accessibility Enhancement" secured a \$75,000 grant from GOCO. The project's objective was to expand existing trails and enhance accessibility for individuals with disabilities. This project was also accomplished on time, adhering to the approved budget, and incorporating all intended improvements.

9. MAINTENANCE**5 points**

- a) Explain how the site will be maintained in perpetuity for outdoor recreation. For example, maintenance plans, future budgeting commitments, etc.

The park's perpetual maintenance for outdoor recreation will be upheld by a dedicated team of full-time and part-time staff. Additionally, a 20-year warranty on the turf and an annual "banner program" generating advertising revenue from local businesses will secure funding for future field replacements. To ensure long-term financial stability for maintenance and renovations, \$75,000 will be annually set aside from the budget. These strategies will collectively guarantee the park's continuous upkeep and sustained appeal for the community.

10. BUDGET AND FUNDING**10 points**

- a) Describe the source of match for the project and when it will be secured. Include in-kind and partner contributions.

OEDIT Outdoor Recreation Grant is providing \$100,000. Pueblo Board of County Commissioners has committed \$150,000. Colorado City Metro has pledged \$50,000. Valley First is contributing \$5,000. The Colorado Department of Transportation (CDOT) has committed \$248,000. The Colorado Department of Public Health and Environment (CDHPE) is contributing \$4,000. Additionally, committed donations from community businesses total \$96,000, and El Pomar has pledged \$20,000. Further support has been received through awarded funds from the Rawlings Foundation, providing \$35,000, and the Anschutz Foundation, contributing \$10,000. Finally, we have a \$350,000 grant pending from the Daniels Fund and 1 million from CDOLA. These committed funds, both cash and in-kind, along with the pledged support of various partners, will serve as the critical match for the project, ensuring its successful implementation.

-
- b) Describe any consequences if this funding application is unsuccessful. For example, loss of partner funds, staff capacity, expiration of surveys, etc.

In the event of an unsuccessful funding application, several significant consequences may occur, impacting both the project and organizational capacities. Firstly, there's the risk of losing partner funds, as the project relies on a combination of funding sources that are time limited. Moreover, the morale and productivity of the project team and staff could be affected, given the effort invested in the application process and the subsequent disappointment of not securing the funding. Additionally, the data collection gathered through the community engagement will age and lose validity, the expiration of these activities is a concern, potentially necessitating costly and time-consuming reiterations. Project implementation is likely to face delays, causing a ripple effect on milestones and objectives. The disappointment within the community and stakeholders invested in the project could lead to decreased engagement and support.

LWCF budget

Project details				Match details			
LWCF grant #				Source of match (organization)	Type	Date available	Amount
Organization	Colorado City Metro District			OEDIT	Cash	01-2023	\$ 100,000.00
Project title	Greenhorn Meadows Park Revitalization			Pueblo County Commissioners/CCMD	Cash	10-2022	\$ 200,000.00
LWCF grant	\$ 1,086,520.48	Grant ratio	50.00%	CDOLA	Cash	11-2023	\$ 673,782.00
Local match	\$ 1,086,520.48	Match ratio	50.00%	Business donations	Cash	06-2023	\$ 112,738.48
Total	\$ 2,173,040.96	Total	100.00%			Total	\$ 1,086,520.48

Description	Pre-award cost	Anticipated date of expense	Qty	Unit type	Cost per unit	Total	Type	LWCF grant	Local match	Balance
Land										
Architectural and engineering fees										
Basic engineering fees related to construction.	Yes	05/2023	1.00	LS	\$ 96,000.00	\$ 96,000.00	Cash	\$ 48,000.00	\$ 48,000.00	\$ -
Other architectural and engineering fees										
Class III Cultural Survey	Yes	12/2024	1.00	LS	\$ 5,000.00	\$ 5,000.00	Cash	\$ 2,500.00	\$ 2,500.00	\$ -
Site work										
Demolition and removal										
Dirt Excavation and Removal	No	09/2024	1.00	EA	\$ 100,000.00	\$ 100,000.00	Cash	\$ 50,000.00	\$ 50,000.00	\$ -
Asphalt rotomill and removal	No	09/2024	1.00	EA	\$ 50,000.00	\$ 50,000.00	Cash	\$ 25,000.00	\$ 25,000.00	\$ -
Construction										
Trionic (52), 2" pile height	No	10/2024	76,600.00	SF	\$ 6.60	\$ 505,800.00	Cash	\$ 252,900.00	\$ 252,900.00	\$ -
Asphalt Track Installation	No	10/2024	157,092.00	SF	\$ 4.15	\$ 652,350.96	Cash	\$ 326,175.48	\$ 326,175.48	\$ -
Concussion Pad	No	10/2024	76,600.00	SF	\$ 1.23	\$ 94,800.00	Cash	\$ 47,400.00	\$ 47,400.00	\$ -
Landscaping	No	11/2024	1.00	EA	\$53,685	\$53,685	Cash	\$ 26,842.50	\$ 26,842.50	\$ -
Equipment										
Miscellaneous										
Base Bid/Infrastructure	No	11/2024	1.00	EA	\$ 30,800.00	\$ 30,800.00	Cash	\$ 15,400.00	\$ 15,400.00	\$ -
Lighting Multi-Use Field and Track	No	11/2024	1.00	EA	\$ 269,375.00	\$ 269,375.00	Cash	\$ 134,687.50	\$ 134,687.50	\$ -
Lighting Little League Field	No	11/2024	1.00	EA	\$ 315,230.00	\$ 315,230.00	Cash	\$ 157,615.00	\$ 157,615.00	\$ -
TOTAL						\$ 2,173,040.96		\$ 1,086,520.48	\$ 1,086,520.48	

Timeline

LAND & WATER CONSERVATION FUND GRANT APPLICATION

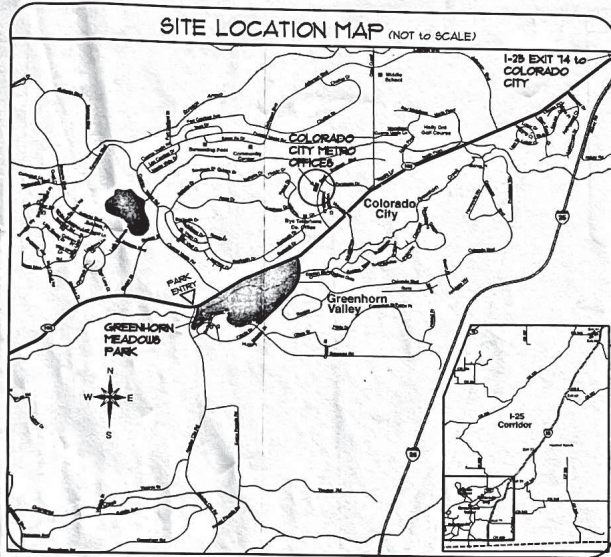


PROJECT DETAILS

Organization Colorado City Metro District
 Project title Greenhorn Meadows Park REvitalization

TASK	Jul-Dec 2023	Jan-Jun 2024	Jul-Dec 2024	Jan-Jun 2025	Jul-Dec 2025	Jan-Jun 2026	Jul-Dec 2026
Project Initiation							
Design and Engineering	x						
Mobilization							
Bids/Contracting		x					
Construction							
Multi-Use Field			x				
Asphalt Track			x				
Lighting			X				
Other/Additional Category							
Open to the public				x			
Grand Opening				x			
Administrative Close-Out				x			



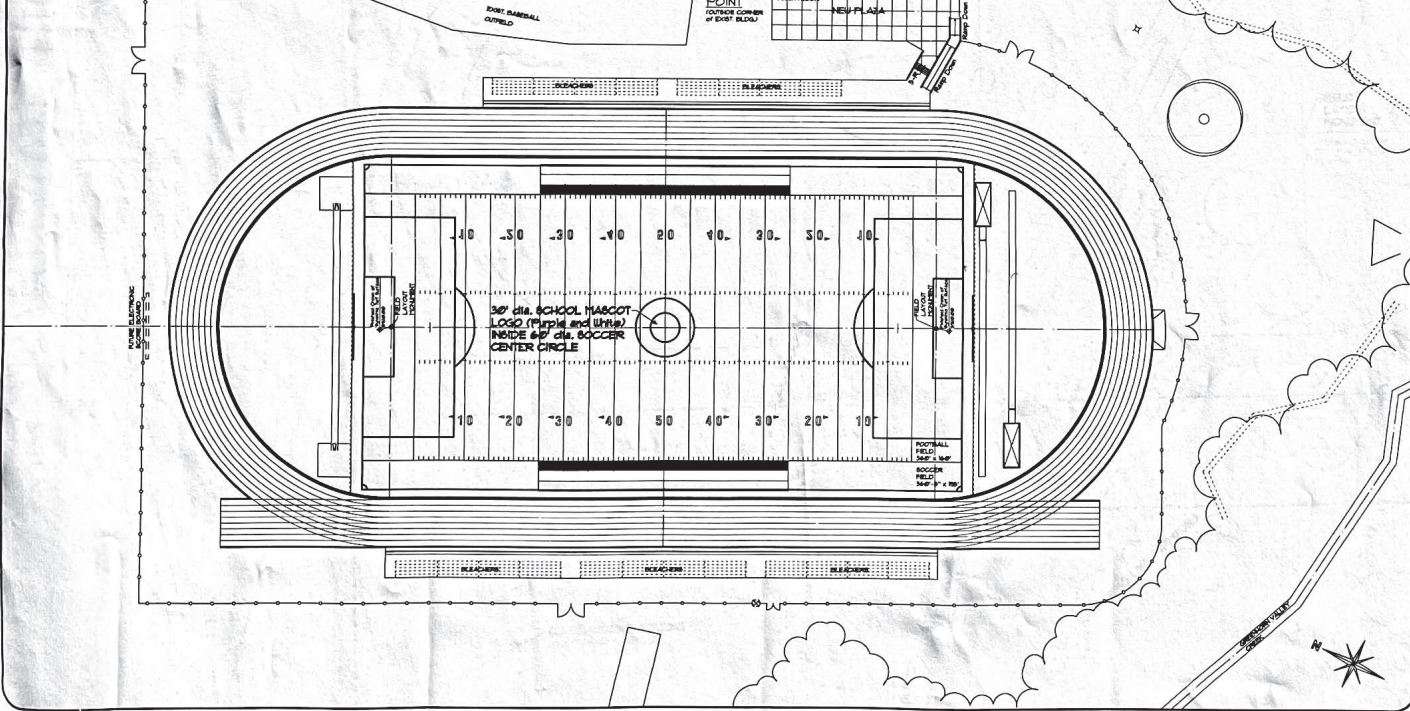


NEW MULTI-PURPOSE ATHLETIC COMPLEX

COLORADO CITY METROPOLITAN DISTRICT

GREENHORN MEADOWS PARK 9000 Hwy. 165
 COLORADO CITY, CO 81019

FOOTBALL / SOCCER STRIPING PLAN (NOT TO SCALE)
 NOTE: LAYOUT LINES and MARKINGS of 360' x 160' FOOTBALL FIELD and 360'-8" x 195' SOCCER FIELD SHALL BE FOR HIGH SCHOOL LEVEL per STATE OF COLORADO HIGH SCHOOL ATHLETICS STANDARDS.



PROJECT DESIGN TEAM

ARCHITECT:	H G F ARCHITECTS, INC. 429 WEST 10TH STREET, SUITE 202 FUEBLO, CO 81003 (719) 543-1600 PHONE (719) 545-2910 FAX
CIVIL ENGINEER:	C 4 M CONSULTING, LLC 1306 FORTINO BLDV. STE. 110 FUEBLO, CO 81008 (719) 543-0200 PHONE (719) 543-5011 FAX
ELECTRICAL ENGINEER:	KOHNERT ENGINEERING 911 S. 8th STREET, SUITE 200 COLORADO SPRINGS, CO 80906 (719) 633-2631 PHONE (719) 633-3465 FAX

INDEX of DRAWINGS

COVER: DRAWING INDEX - DESIGN TEAM - SITE LOCATION MAP	
C1.0	EXISTING SITE TOPOGRAPHY
C1.1	SITE GRADING / DRAINAGE PLAN
C1.2	CUT/FILL PROFILES
C2.0	SITE DEMOLITION / SITE UTILITIES PLAN
C2.1	SITE PAVING / FIELD DRAINAGE / SYNTHETIC TURF LAYOUT PLAN
C2.2	SITEWORK DETAILS / RETAINING WALL SECTIONS
C2.3	SYNTHETIC TURF 'COOL DOWN' IRRIGATION and PERIMETER SEEDING AREA IRRIGATION PLAN
E1	OVERALL SITE ELECTRICAL / SITE LIGHTING / CONDUIT LAYOUT PLAN
E2	SCHEDULES / DIAGRAMS
E3	ELECTRICAL SPECIFICATIONS

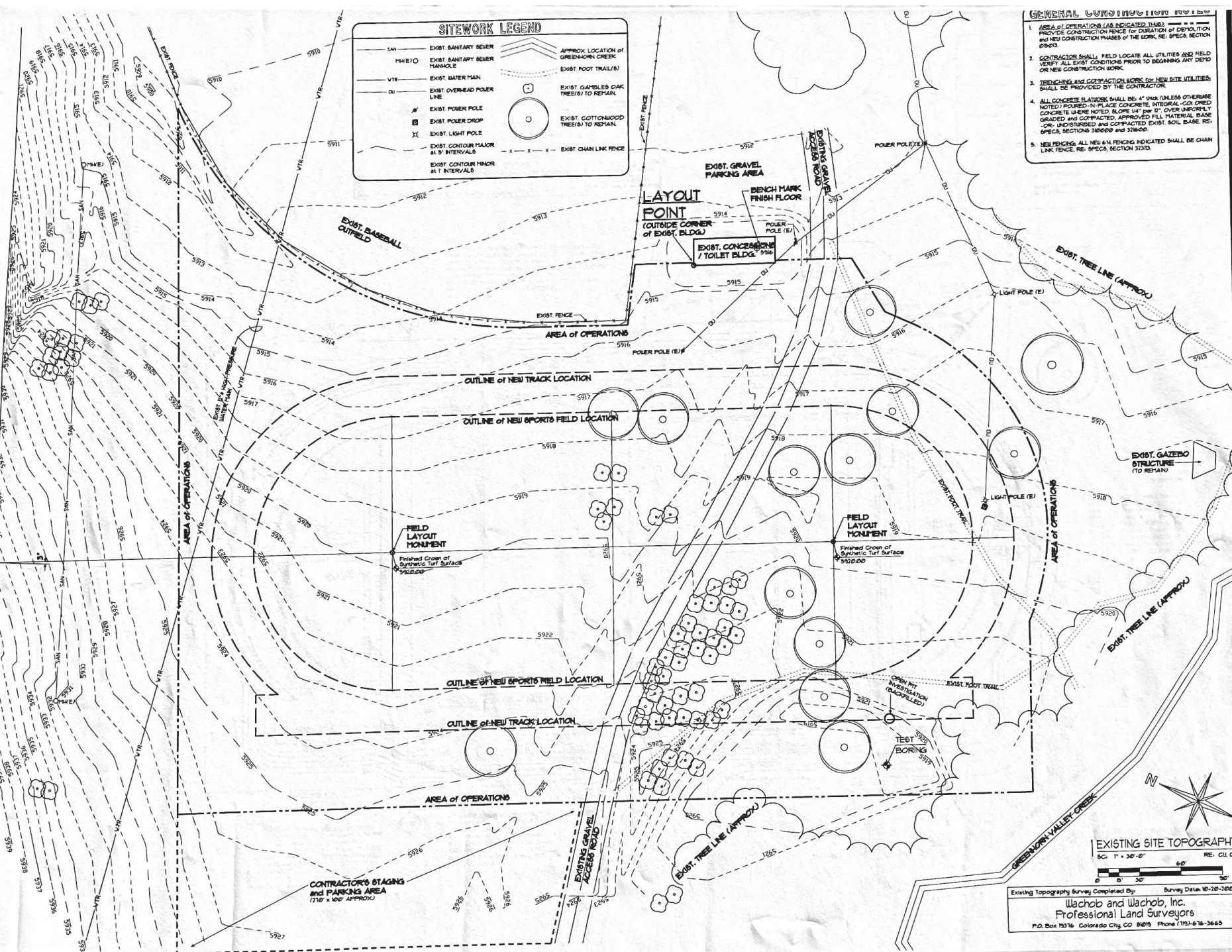
435 W. 10 ST. FUEBLO, CO
H G F ARCHITECTS
NEW MULTI-PURPOSE ATHLETIC COMPLEX
COLORADO CITY METROPOLITAN DISTRICT
GREENHORN MEADOWS PARK 9000 Hwy. 165 COLORADO CITY, CO 81019
 DATE: 01.26.07
 DRAWN BY: BK
 CHECKED BY: CR
 REVISIONS: 1
COVER

COLORADO STATE HIGHWAY No. 165

SITWORK LEGEND

— SAN —	EXIST. SANITARY BEWER	---	APPROX. LOCATION OF GREENHORN CREEK
MHE/O	EXIST. SANITARY BEWER MANHOLE	---	EXIST. FOOT TRAIL(S)
— VTR —	EXIST. WATER MAIN	○	EXIST. GAMBLES OAK TREES TO RETAIN
— DU —	EXIST. OVERHEAD POWER LINE	○	EXIST. COTONWOOD TREES TO RETAIN
— P —	EXIST. POWER POLE	— X — X —	EXIST. CHAIN LINK FENCE
— D —	EXIST. POWER DROP		
— L —	EXIST. LIGHT POLE		
— MA —	EXIST. CONTOUR MAJOR @ 1' INTERVALS		
— MI —	EXIST. CONTOUR MINOR @ 1' INTERVALS		

- GENERAL CONDITIONS**
1. AREA OF OPERATIONS (AS INDICATED THEREON) PROVIDE CONSTRUCTION FENCE FOR DURATION OF DEPOSITION AND NEW CONSTRUCTION PHASES OF THE WORK, RE. SPEC. SECTION 02603.
 2. CONTRACTOR SHALL FIELD LOCATE ALL UTILITIES AND FIELD VERIFY ALL EXIST. CONDITIONS PRIOR TO BEGINNING ANY DEMO OR NEW CONSTRUCTION WORK.
 3. TRENCHING AND CONSTRUCTION WORK FOR NEW SITE UTILITIES SHALL BE PROVIDED BY THE CONTRACTOR.
 4. ALL CONCRETE PLATFORMS SHALL BE 4" THICK UNLESS OTHERWISE NOTED; POURED IN PLACE CONCRETE, INTEGRAL-CO2 CURED CONCRETE WHERE NOTED, SLOPE 1/4" PER 12" OVER UNIFORM, OR, UNDISTURBED AND COMPACTED EXIST. SOIL BASE, RE. SPEC. SECTIONS 310000 and 320000.
 5. NEEDLING: ALL NEW #14 FENCING INDICATED SHALL BE CHAIN LINK FENCE, RE. SPEC. SECTION 32303.



HIGGIE ARCHITECTS
423 W. 30 ST.
PUEBLO, CO.

NEW MULTI-PURPOSE ATHLETIC COMPLEX
COLORADO CITY METROPOLITAN DISTRICT
GREENHORN MEADOWS PARK 6000 HWY. 165 COLORADO CITY, CO 81018

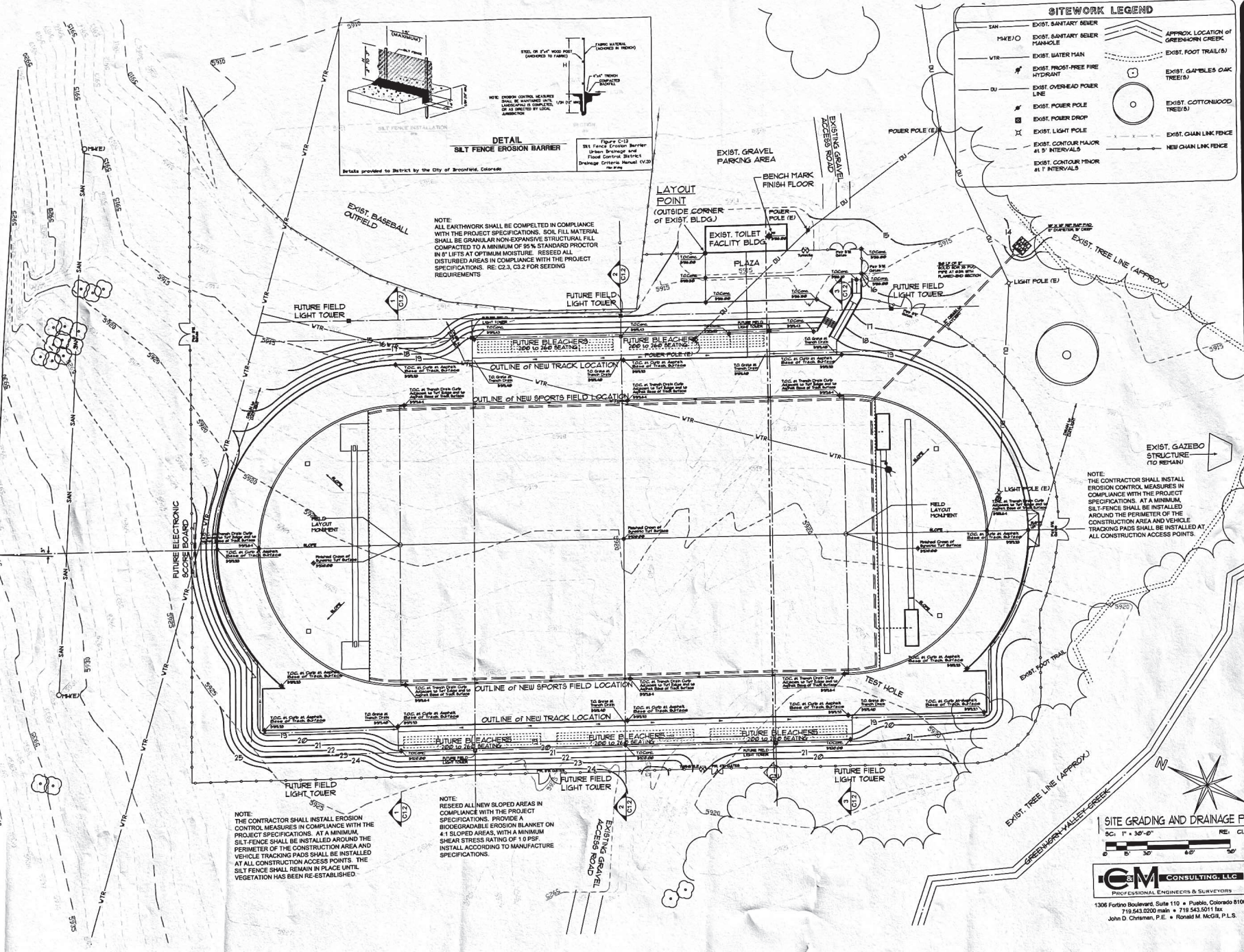
DATE	07-16-01
DRAWN	CR
CHECK	
REVISIONS	

EXISTING SITE TOPOGRAPHY
SC. 1" = 30'-0"
RE. CU 21

Existing Topography Survey Completed By: Survey Data: 10-20-2000
Wachob and Wachob, Inc.
Professional Land Surveyors
P.O. Box 19376 Colorado City, CO 81019 Phone (719)-676-3665

C1.0

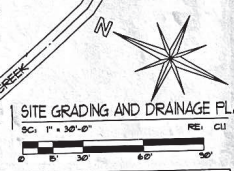
COLORADO STATE HIGHWAY No. 165



SITEWORK LEGEND

SAN	EXIST. SANITARY SEWER	---	APPROX. LOCATION OF GREENHORN CREEK
PM/E/O	EXIST. SANITARY REVER MANHOLE	---	EXIST. FOOT TRAIL(S)
VTR	EXIST. WATER MAIN	○	EXIST. GAMBLES OAK TREE(S)
#	EXIST. Frost-Free FIRE HYDRANT	○	EXIST. COTTONWOOD TREE(S)
DU	EXIST. OVERHEAD POWER LINE	---	EXIST. CHAIN LINK FENCE
#	EXIST. POWER POLE	---	NEW CHAIN LINK FENCE
□	EXIST. POWER DROP		
X	EXIST. LIGHT POLE		
○	EXIST. CONTOUR MAJOR at 5' INTERVALS		
○	EXIST. CONTOUR MINOR at 1' INTERVALS		

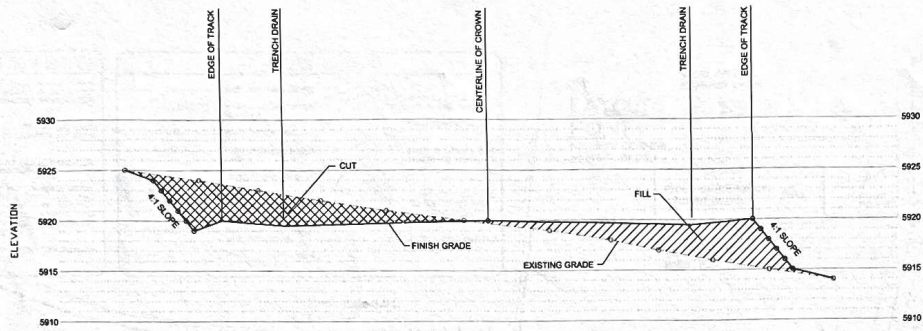
433 W. 13 ST. PUEBLO, CO. 81019
HGIF ARCHITECTS
NEW MULTI-PURPOSE ATHLETIC COMPLEX
COLORADO CITY METROPOLITAN DISTRICT
 GREENHORN MEADOWS PARK 8000 HWY. 165 COLORADO CITY, CO 81019



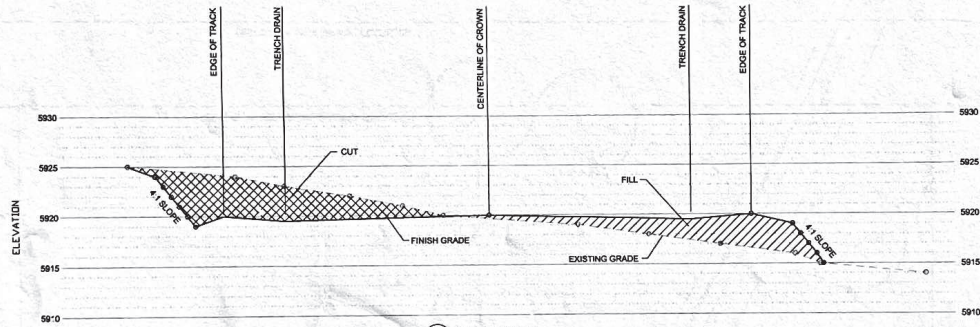
G&M CONSULTING, LLC
 PROFESSIONAL ENGINEERS & SURVEYORS
 1306 Fortino Boulevard, Suite 110 • Pueblo, Colorado 81008
 719.543.0200 main • 719.543.5011 fax
 John D. Christman, P.E. • Ronald M. McGill, P.L.S.

C1.1

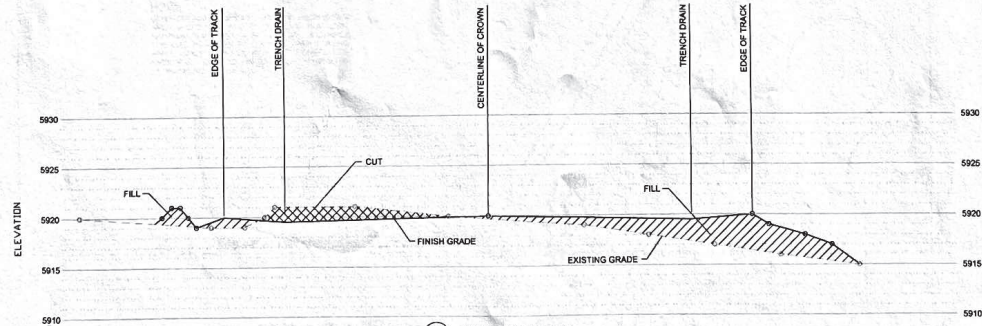
DATE: JULY 23, 2007
 DRAWN: JDC
 CHECK: JDC
 DESIGN STAGE:



1-1
C1.2 NORTH END FIELD SECTION
SECTION 1-1
SCALE: 1" = 30' HORIZ.
SCALE: 1" = 5' VERTICAL



2-2
C1.7 MID-FIELD SECTION
SECTION 1-1
SCALE: 1" = 30' HORIZ.
SCALE: 1" = 5' VERTICAL



3-3
C1.2 SOUTH END FIELD SECTION
SECTION 1-1
SCALE: 1" = 30' HORIZ.
SCALE: 1" = 5' VERTICAL

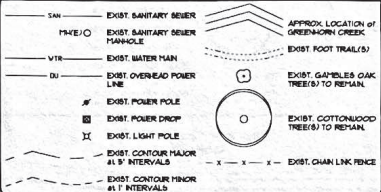


PROFESSIONAL ENGINEERS & SURVEYORS
1306 Fortino Boulevard, Suite 110 • Pueblo, Colorado 81008
719.543.0200 main • 719.543.5011 fax
John D. Christian, P.E. • Ronald M. McGill, P.L.S.

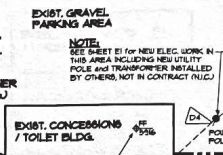
GENERAL CONSTRUCTION NOTES

1. AREA OF OPERATIONS (AS INDICATED) SHALL PROVIDE CONSTRUCTION FENCE FOR DURATION OF DEMOLITION AND NEW CONSTRUCTION PHASES OF THE WORK, RE: SPEC. SECTION 02600.
2. CONTRACTOR SHALL FIELD LOCATE ALL UTILITIES AND FIELD VERIFY ALL EXIST. CONDITIONS PRIOR TO BEGINNING ANY DEMO OR NEW CONSTRUCTION WORK.
3. TRENCHING AND CONNECTION WORK FOR NEW/EXIST. UTILITIES SHALL BE PROVIDED BY THE CONTRACTOR.
ALL CONCRETE SLABWORK SHALL BE 4" MIN. (BASES OTHERWISE NOTED) POURED-IN-PLACE CONCRETE, INTEGRAL-COLORED CONCRETE WHERE NOTED, SLOPE 1/4" PER FT. OVER UNFORMELY GRADED AND COMPACTED, APPROVED FILL MATERIAL, BASE OR UNDESIGNED AND COMPACTED EXIST. SOIL BASE, RE: SPEC. SECTIONS 33000 AND 33000.
4. NEW FENCE, AS SHOWN IN FENCING INDICATED SHALL BE CHAIN LINK FENCE, RE: SPEC. SECTION 33100.

SITWORK LEGEND



LAYOUT POINT
(OUTSIDE CORNER of EXIST. BLDG)



NOTE: SEE SHEET E1 FOR NEW ELEC. WORK IN THIS AREA INCLUDING NEW UTILITY POLE AND TRANSFORMER INSTALLED BY OTHERS, NOT IN CONTRACT (N/C).

NOTE: NEW 3" DIA. TO 4" DIA. TAPPED TEE ON TO EXIST. 3" DIA. HIGH-PRESSURE WATER MAIN. 20' SECTION OF 4" DIA. 300 PSI PVC PIPE, REDUCE DOWN TO 3" DIA. 20' SECTION OF 3" DIA. 200 PSI PVC PIPE TO NEW BACKFLOW PREVENTION DEVICE AND 3" DIA. REGULATION TAP FOR SYNTHETIC TURF COOL-SYSTEMERS' RE: C23 and SPEC. SECTIONS 33000 and 33000.

NOTE: GRUB-OFF and STRIP EXIST. TOP SOIL FROM ENTIRE AREA WHERE NEW FIELD, TRACK, CONC. PLATWORK, RAMP and STAIRS ARE TO BE LOCATED - 8" DEEP/10' TOP SOIL ADJACENT TO CONTRACTOR'S STAGING AREA - EXIST. TOP SOIL SHALL BE REINSTALLED OVER NEWLY GRADED AREAS AROUND PERIPHERY OF TRACK, RE: C11 and C23.

SITWORK DEMOLITION FLAG NOTES

- ⊕ EXIST. WOOD LIGHT POLE, PULL BOX and OVERHEAD POWER LINE SHALL BE REMOVED BY OTHERS, NOT IN CONTRACT (N/C).
- ⊖ EXIST. LARGE TREE (3" DIA. or LARGER TRUNK) and ROOT BALL IN ITS ENTIRETY - BACKFILL EXCAVATED AREA, CONTRACT TO NEW GRADE and PREP FOR NEW WORK.
- ⊗ EXIST. TEMPORARY WOOD POWER POLE and OVERHEAD POWER LINE SHALL BE REMOVED BY OTHERS, NOT IN CONTRACT (N/C).
- ⊕ EXIST. BASE BLDG WORK, BACKFILL EXCAVATED AREA (WHERE POLE WAS REMOVED), CONTRACT TO NEW GRADE and PREP FOR NEW WORK.

SITE DEMOLITION and SITE UTILITIES PLAN



HOGIF ARCHITECTS
 400 W. 10 ST. PUEBLO, CO.
NEW MULTI-PURPOSE ATHLETIC COMPLEX
 COLORADO CITY METROPOLITAN DISTRICT
 GREENHORN MEADOWS PARK 6600 HWY. 166 COLORADO CITY, CO 81009
 DATE: 05-20-01
 DRAWN BY: [blank]
 CHECKED BY: [blank]
 REVISIONS: [blank]

C2.0

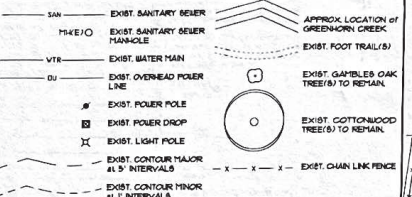
GENERAL CONSTRUCTION NOTES

1. AREA OF OPERATIONS (AS INDICATED) SHALL PROVIDE CONSTRUCTION FENCE FOR DURATION OF DEPOSITION AND NEW CONSTRUCTION PHASES OF THE WORK. RE: SPEC. SECTION 01600.
2. CONTRACTOR SHALL FIELD LOCATE ALL UTILITIES AND FIELD VERIFY ALL EXIST. CONDITIONS PRIOR TO BEGINNING ANY DEMO OR NEW CONSTRUCTION WORK.
3. TRENCHING AND CONSTRUCTION WORK FOR NEW UTILITIES SHALL BE PROVIDED BY THE CONTRACTOR.
4. ALL CONCRETE SLABWORK SHALL BE 4" THICK UNLESS OTHERWISE NOTED / POURED IN-PLACE CONCRETE, INTEGRAL-COLORED CONCRETE (WHERE NOTED, SLOPE 1/4" PER 12" OVER UNIFORM, TYPE GRADED AND COMPACTED, APPROVED FILL MATERIAL BASE, RE: SPEC. SECTIONS 31000 AND 31060).
5. NEW FENCING, ALL NEW 6' H. FENCING INDICATED SHALL BE CHAIN LINK FENCE, RE: SPEC. SECTION 33103.

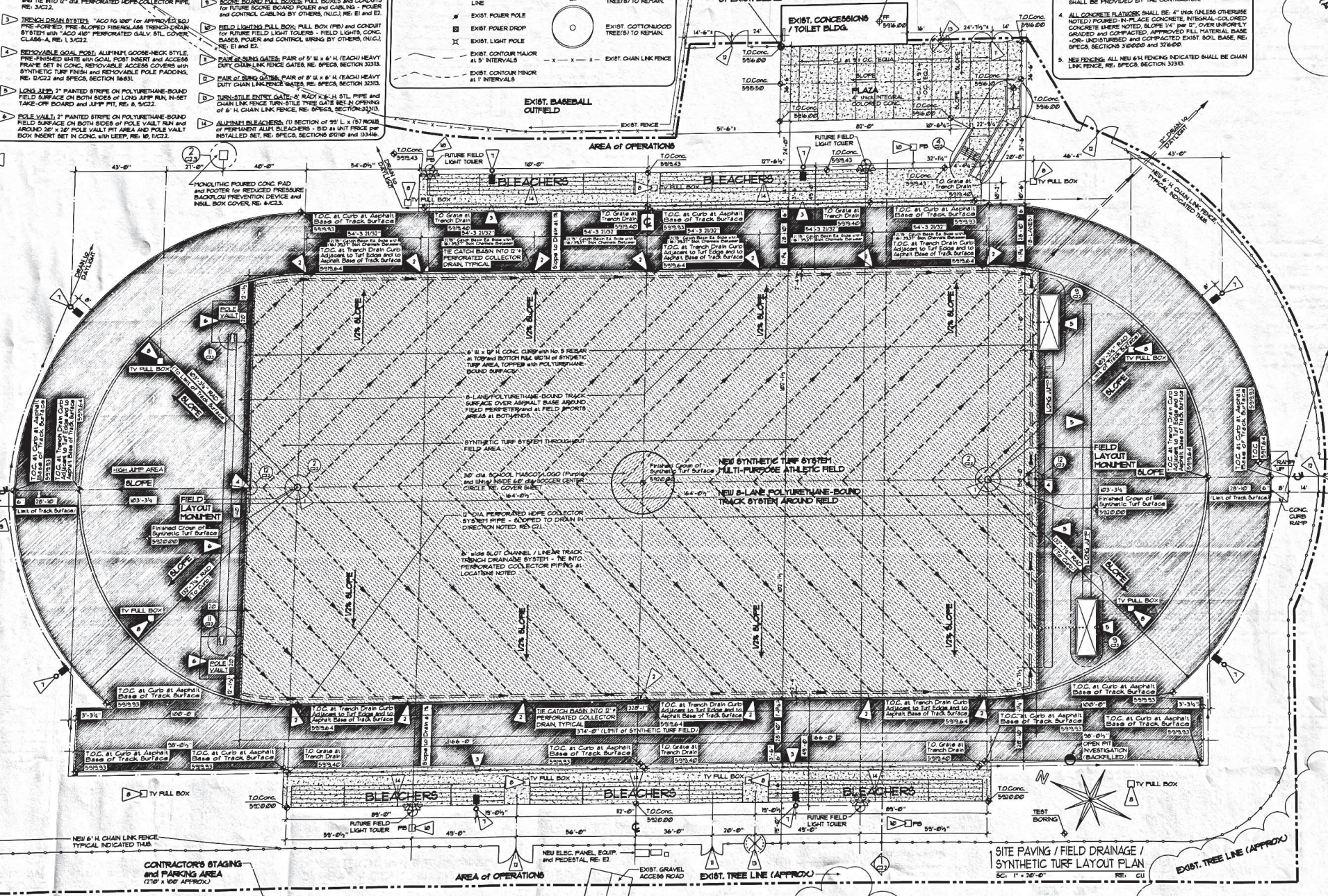
NEW SITEWORK CONSTRUCTION FLAG NOTES

1. FIELD LAYOUT MONUMENTS: PROVIDE AND INSTALL PERMANENT FIELD LAYOUT MONUMENTS PER 31023 IN (1) LOCATIONS NOTED ON UCI PRIOR TO START OF ANY FURTHER FIELD LAYOUT WORK.
2. IN-LINE CATCH BASIN: "ACC" (PER IT) SYSTEM 3000 (OR APPROVED EQ) IN-LINE CATCH-BASIN FOR SLOTT CHANNEL TRENCH DRAIN SYSTEM - (SLOTT. CUT EDGE OF CATCH BASIN PER MANUF. RECOMMENDATIONS, INSTALL 1/2" DIA. PVC PIPE AND TIE INTO 2" DIA. PERFORATED HDPE COLLECTOR PIPE, RE: 31023).
3. TRENCH DRAIN SYSTEMS: "ACC" (PER IT) (OR APPROVED EQ) PRE-FINISHED BATH WITH SOLID FOOT RESTRICTION AND ACCESS FRAME SET IN CONC. RESERVABLE ACCESS COVERS WITH SYNTHETIC TURF FINISH AND RESERVABLE POLE PADINGS, RE: 31023 AND SPEC. SECTION 31060.
4. LONG JUMP: 2" PAINTED STRIPE ON POLYURETHANE-BOUND FIELD SURFACE ON BOTH SIDES OF LONG JUMP RUN, IN-SET TAKE-OFF BOARD AND JUMP PIT, RE: 31023.
5. POLE VAULT: 2" PAINTED STRIPE ON POLYURETHANE-BOUND FIELD SURFACE ON BOTH SIDES OF POLE VAULT RUN AND AROUND 20' x 20' POLE VAULT FIT AREA AND POLE VAULT BOX INSERT SET IN CONC. WITH REAR, RE: 31023.
6. SECURITY AND SAFETY LIGHTING: POLE-MOUNTED SITE LIGHT FIXTURES INSTALLED COMPLETE INCLUDING CONC. BASE CONDUIT USING AND PHOTO CELL/ULTRALIGHT CONTROLLER, RE: E1 AND E2.
7. TV PULL BOX: FULL BOX AND CONDUIT FOR FUTURE TV CABLES - CABLES INSTALLED BY OTHERS, NOT IN CONTRACT (N/C), RE: E1 AND E2.
8. SCORE BOARD: FULL BOXES AND CONDUITS FOR FUTURE SCORE BOARD POWER AND CABLES - POWER AND CONTROL CABLES BY OTHERS, (N/C), RE: E1 AND E2.
9. FIELD LIGHTING: FULL BOX, FULL BOX (FB) AND CONDUIT FOR FUTURE FIELD LIGHT TOWERS - FIELD LIGHTS, CONC. BASES, POWER AND CONTROL WIRING BY OTHERS, (N/C), RE: E1 AND E2.
10. PAIR OF BUNG GATES: PAIR OF 6" H. x 6" H. (EACH) HEAVY DUTY CHAIN LINK FENCE GATES, RE: SPEC. SECTION 33103.
11. PAIR OF BUNG GATES: PAIR OF 6" H. x 6" H. (EACH) HEAVY DUTY CHAIN LINK FENCE GATES, RE: SPEC. SECTION 33103.
12. TURBUSTILE ENTRY GATE: 6" RAD. R-4 H. STL. PIPE AND CHAIN LINK FENCE TURN-STYLE TYPE GATE RE: IN OPENING OF 6" H. CHAIN LINK FENCE, RE: SPEC. SECTION 33103.
13. ALUMINUM BLEACHERS: (1) SECTION OF 99' L. x 167' WIDE OF PERMANENT ALUM. BLEACHERS - BID IN UNIT PRICE PER INSTALLED SET, RE: SPEC. SECTIONS 30100 AND 33340.

SITework LEGEND



LAYOUT POINT
 (OUTSIDE CORNER OF EXIST. BLDG.)



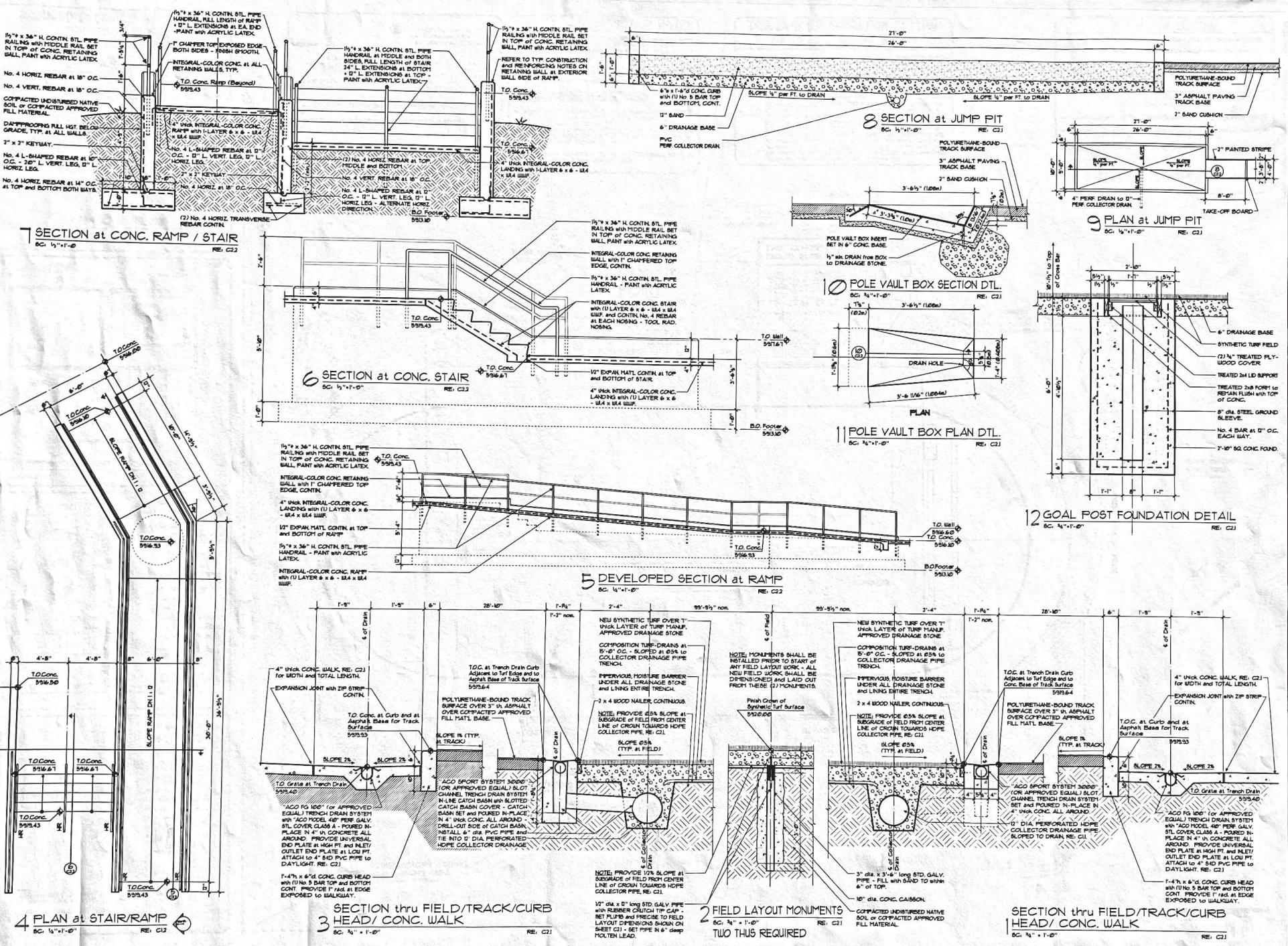
SITE PAVING / FIELD DRAINAGE / SYNTHETIC TURF LAYOUT PLAN
 SCALE: 1" = 30'-0"

CONTRACTOR'S STAGING AND PARKING AREA (710' x 100' APPROX.)

AREA OF OPERATIONS

EXIST. TREE LINE (APPROX.)

EXIST. TREE LINE (APPROX.)



1 1/2" x 3/8" H. CONTN. STL. PIPE RAILING WITH MIDDLE RAIL SET IN TOP OF CONC. RETAINING WALL, PAINT WITH ACRYLIC LATEX.
 No. 4 HORIZ. REBAR at 18" O.C.
 No. 4 VERT. REBAR at 18" O.C.
 COMPACTED UNDISTURBED NATIVE SOIL OR COMPACTED APPROVED FILL MATERIAL.
 DAMPROOFING FULL HGT. BELOW GRADE, TYP. AT ALL WALLS.
 2" x 2" KEYWAY.
 No. 4 L-SHAPED REBAR at 10" O.C. - 10" L. VERT. LEG, 17" L. HORIZ. LEG.
 No. 4 HORIZ. REBAR at 14" O.C. at TOP and BOTTOM BOTHWAYS.

1 1/2" x 3/8" H. CONTN. STL. PIPE RAILING WITH MIDDLE RAIL SET IN TOP OF CONC. RETAINING WALL, PAINT WITH ACRYLIC LATEX.
 1" CHAMFER TOP EXPOSED EDGE BOTH SIDES - FINISH SMOOTH.
 INTEGRAL-COLOR CONC. at ALL RETAINING WALLS, TYP.
 1/2" THK INTEGRAL-COLOR CONC. RAMP WITH 1 LAYER 6 x 6 - 184 x 184 WSP.
 No. 4 L-SHAPED REBAR at 10" O.C. - 10" L. VERT. LEG, 17" L. HORIZ. LEG.
 2" x 2" KEYWAY.
 No. 4 HORIZ. REBAR at 18" O.C.
 No. 4 VERT. REBAR at 18" O.C.
 No. 4 L-SHAPED REBAR at 10" O.C. - 10" L. VERT. LEG, 17" L. HORIZ. LEG - ALTERNATE HORIZ. DIRECTION.

1 1/2" x 3/8" H. CONTN. STL. PIPE RAILING WITH MIDDLE RAIL SET IN TOP OF CONC. RETAINING WALL, PAINT WITH ACRYLIC LATEX.
 REFER TO TYP. CONSTRUCTION AND REINFORCING NOTES ON RETAINING WALL at EXTERIOR WALL SIDE OF RAMP.
 1/2" EXPAN. MATL. CONTN. at TOP and BOTTOM of RAMP.
 1/2" THK INTEGRAL-COLOR CONC. LANDING WITH 1 LAYER 6 x 6 - 184 x 184 WSP.
 1/2" THK INTEGRAL-COLOR CONC. RAMP WITH 1 LAYER 6 x 6 - 184 x 184 WSP.
 1/2" THK INTEGRAL-COLOR CONC. RAMP WITH 1 LAYER 6 x 6 - 184 x 184 WSP.
 1/2" THK INTEGRAL-COLOR CONC. RAMP WITH 1 LAYER 6 x 6 - 184 x 184 WSP.

1 1/2" x 3/8" H. CONTN. STL. PIPE RAILING WITH MIDDLE RAIL SET IN TOP OF CONC. RETAINING WALL, PAINT WITH ACRYLIC LATEX.
 INTEGRAL-COLOR CONC. RETAINING WALL WITH 1" CHAMFERED TOP EDGE, CONTN.
 1/2" EXPAN. MATL. CONTN. at TOP and BOTTOM of RAMP.
 1/2" THK INTEGRAL-COLOR CONC. LANDING WITH 1 LAYER 6 x 6 - 184 x 184 WSP.

1 1/2" x 3/8" H. CONTN. STL. PIPE RAILING WITH MIDDLE RAIL SET IN TOP OF CONC. RETAINING WALL, PAINT WITH ACRYLIC LATEX.
 INTEGRAL-COLOR CONC. RETAINING WALL WITH 1" CHAMFERED TOP EDGE, CONTN.
 1/2" EXPAN. MATL. CONTN. at TOP and BOTTOM of RAMP.
 1/2" THK INTEGRAL-COLOR CONC. LANDING WITH 1 LAYER 6 x 6 - 184 x 184 WSP.

POLE VAULT BOX INSET SET IN 6" CONC. BASE.
 1/2" DIA. DRAIN FROM BOX TO DRAINAGE STONE.
 3" x 6" (1.00m)
 3" x 6" (1.00m)
 3" x 6" (1.00m)

POLYURETHANE-BOUND TRACK SURFACE
 3" ASPHALT PAVING TRACK BASE
 2" SAND CUSHION
 2" PAINTED STRIPE
 TAKE-OFF BOARD
 4" FEET DRAIN TO 12" PER. COLLECTOR DRAIN
 6" DRAINAGE BASE
 SYNTHETIC TURF FIELD
 (2) 1/2" TREATED PLY-WOOD COVER
 TREATED 2x4 LD SUPPORT
 TREATED 2x6 FORM TO REPAIR FLUSH WITH TOP OF CONC.
 8" DIA. STEEL GROUND BULBUE.
 No. 4 BAR at 12" O.C. EACH WAY.
 7-10" SQ. CONC. FOUND.

1 1/2" x 3/8" H. CONTN. STL. PIPE RAILING WITH MIDDLE RAIL SET IN TOP OF CONC. RETAINING WALL, PAINT WITH ACRYLIC LATEX.
 INTEGRAL-COLOR CONC. RETAINING WALL WITH 1" CHAMFERED TOP EDGE, CONTN.
 1/2" EXPAN. MATL. CONTN. at TOP and BOTTOM of RAMP.
 1 1/2" x 3/8" H. CONTN. STL. PIPE RAILING WITH MIDDLE RAIL SET IN TOP OF CONC. RETAINING WALL, PAINT WITH ACRYLIC LATEX.
 INTEGRAL-COLOR CONC. RAMP WITH 1 LAYER 6 x 6 - 184 x 184 WSP.

1 1/2" x 3/8" H. CONTN. STL. PIPE RAILING WITH MIDDLE RAIL SET IN TOP OF CONC. RETAINING WALL, PAINT WITH ACRYLIC LATEX.
 INTEGRAL-COLOR CONC. RETAINING WALL WITH 1" CHAMFERED TOP EDGE, CONTN.
 1/2" EXPAN. MATL. CONTN. at TOP and BOTTOM of RAMP.
 1/2" THK INTEGRAL-COLOR CONC. LANDING WITH 1 LAYER 6 x 6 - 184 x 184 WSP.

NEW SYNTHETIC TURF OVER 1" THK LAYER OF TURF MANUF. APPROVED DRAINAGE STONE.
 COMPOSITION TURF-DRAINS at 18" O.C. - SLOPED at 0.5% TO COLLECTOR DRAINAGE PIPE TRENCH.
 IMPERVIOUS MOISTURE BARRIER UNDER ALL DRAINAGE STONE and LINING ENTIRE TRENCH.
 2" x 4" WOOD NAILER CONTINUOUS.
 NOTE: PROVIDE 0.5% SLOPE at SURFACE of FIELD FROM CENTER LINE OF DRAIN TOWARDS HOPE COLLECTOR PIPE RE: C21.
 SLOPE 0.5% (TYP. at FIELD)

4" THK CONC. WALK, RE: C21 for WIDTH and TOTAL LENGTH.
 EXPANSION JOINT WITH ZIP STRIP CONTN.
 T.O. Conc. at Curb and at Asphalt Base for Track Surface.
 T.O. Conc. at Curb and at Asphalt Base for Track Surface.
 T.O. Conc. at Curb and at Asphalt Base for Track Surface.

4" THK CONC. WALK, RE: C21 for WIDTH and TOTAL LENGTH.
 EXPANSION JOINT WITH ZIP STRIP CONTN.
 T.O. Conc. at Curb and at Asphalt Base for Track Surface.
 T.O. Conc. at Curb and at Asphalt Base for Track Surface.
 T.O. Conc. at Curb and at Asphalt Base for Track Surface.

T.O. Conc. at Trench Drain Curb Adjacent to Turf Edge and to Asphalt Base of Track Surface.
 POLYURETHANE-BOUND TRACK SURFACE OVER 3" IN ASPHALT OVER COMPACTED APPROVED FILL MATL. BASE.
 SLOPE 1% (TYP. at TRACK)
 ACC SPORT SYSTEM 3000 (OR APPROVED EQUAL) SLOT CHANNEL TRENCH DRAIN SYSTEM IN-LINE CATCH BASIN WITH SLOTTED CATCH BASIN COVER - CATCH BASIN SET and POURED IN-PLACE IN 4" THK CONC. ALL AROUND. DRILL-OUT HOLES OF CATCH BASIN. INSTALL 6" DIA. PERFORATED HOPE COLLECTOR PIPE AND TIE INTO 12" DIA. PERFORATED HOPE COLLECTOR DRAINAGE.

NOTE: MONUMENTS SHALL BE INSTALLED PRIOR TO START OF ANY FIELD LAYOUT WORK - ALL NEW FIELD WORK SHALL BE DIMENSIONED and LAID OUT FROM THESE (2) MONUMENTS.
 Finish Cover of Synthetic Turf Surface.
 3" DIA. x 3'-6" LONG STD. GALV. PIPE - FILL WITH SAND TO WITHIN 6" OF TOP.
 10" DIA. CONC. CASSION.
 COMPACTED UNDISTURBED NATIVE SOIL OR COMPACTED APPROVED FILL MATERIAL.

4" THK CONC. WALK, RE: C21 for WIDTH and TOTAL LENGTH.
 EXPANSION JOINT WITH ZIP STRIP CONTN.
 T.O. Conc. at Curb and at Asphalt Base for Track Surface.
 T.O. Conc. at Curb and at Asphalt Base for Track Surface.
 T.O. Conc. at Curb and at Asphalt Base for Track Surface.

4" THK CONC. WALK, RE: C21 for WIDTH and TOTAL LENGTH.
 EXPANSION JOINT WITH ZIP STRIP CONTN.
 T.O. Conc. at Curb and at Asphalt Base for Track Surface.
 T.O. Conc. at Curb and at Asphalt Base for Track Surface.
 T.O. Conc. at Curb and at Asphalt Base for Track Surface.

1-4" x 6" DIA. CONC. CURB HEAD WITH (1) No. 5 BAR TOP and BOTTOM CONT. PROVIDE 1" RAD. at EDGE EXPOSED to WALKWAY.

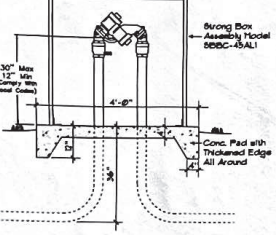
1-4" x 6" DIA. CONC. CURB HEAD WITH (1) No. 5 BAR TOP and BOTTOM CONT. PROVIDE 1" RAD. at EDGE EXPOSED to WALKWAY.

1/2" DIA. x 8" LONG STD. GALV. PIPE WITH RUBBER CRUTCH TIP CAP - SET PLUMB and FRESSE TO HELP LAYOUT EXPANSION MARKS ON SHEET G21 - SET PIPE IN 6" DEEP MOLDED LEAD.

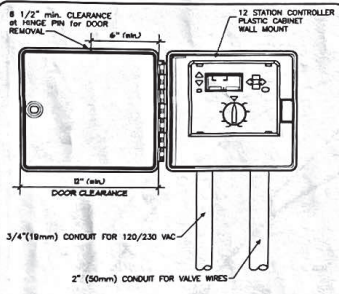
1-4" x 6" DIA. CONC. CURB HEAD WITH (1) No. 5 BAR TOP and BOTTOM CONT. PROVIDE 1" RAD. at EDGE EXPOSED to WALKWAY.

1-4" x 6" DIA. CONC. CURB HEAD WITH (1) No. 5 BAR TOP and BOTTOM CONT. PROVIDE 1" RAD. at EDGE EXPOSED to WALKWAY.

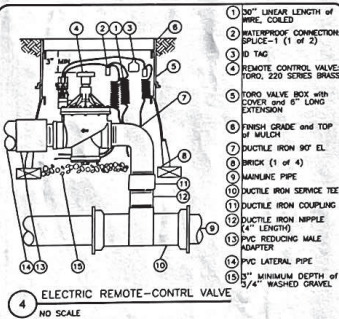
REDUCED PRESSURE BACKFLOW PREVENTION DEVICE



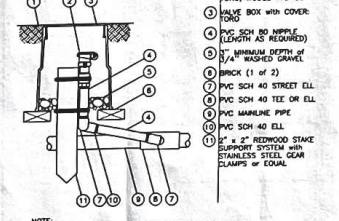
2 3" x FERGCO MODEL 825YA
Reduced Pressure Backflow Prevention Assembly
Standard Configuration
Outside Freeze Protection Installation



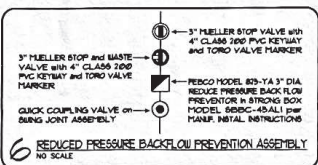
3 TORO CUSTOM COMMAND CONTROLLER
NO SCALE
INSTALLATION DETAIL



4 ELECTRIC REMOTE-CONTROL VALVE
NO SCALE



5 QUICK COUPLING VALVE
NO SCALE



6 REDUCED PRESSURE BACKFLOW PREVENTION ASSEMBLY
NO SCALE

GENERAL CONSTRUCTION NOTES

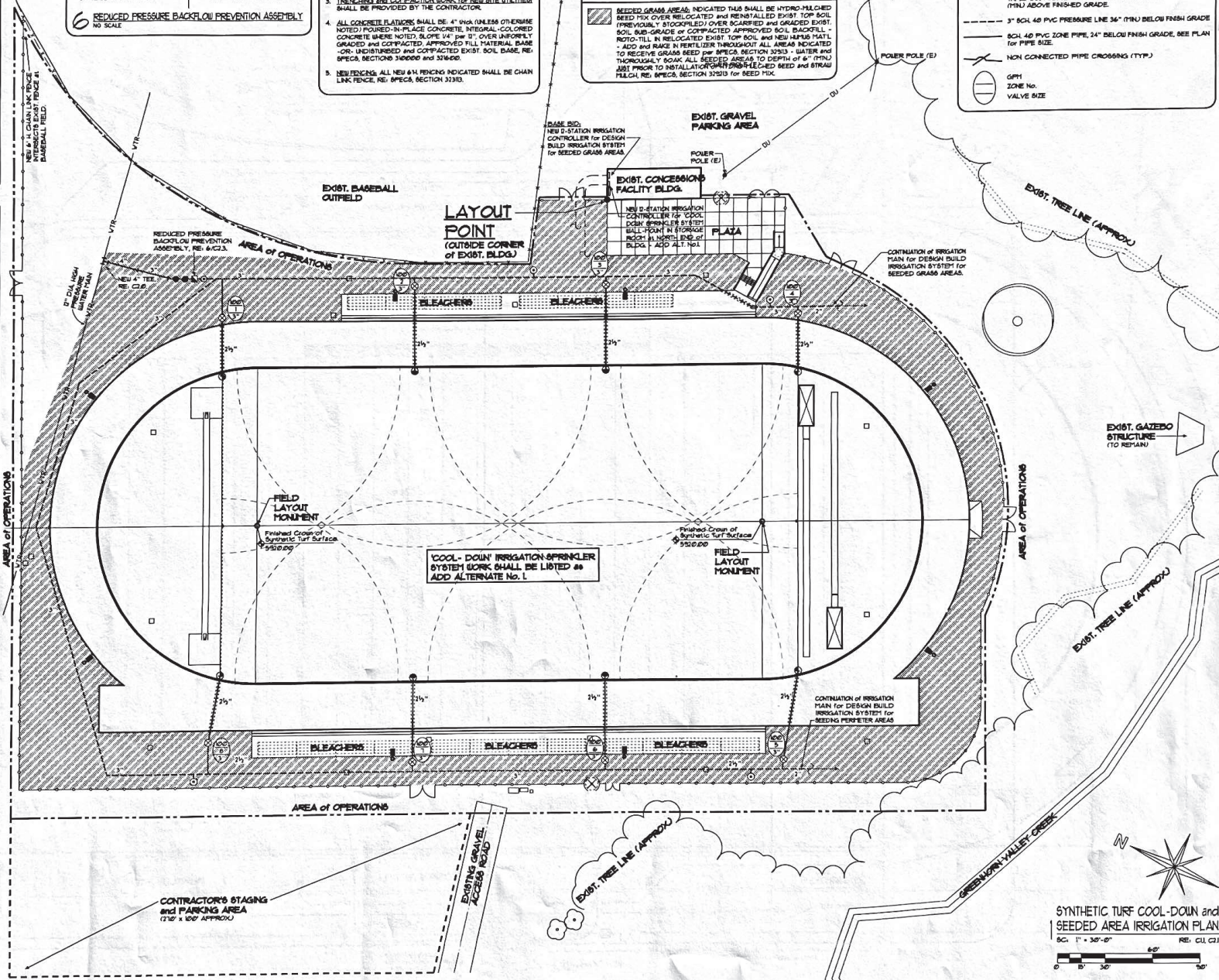
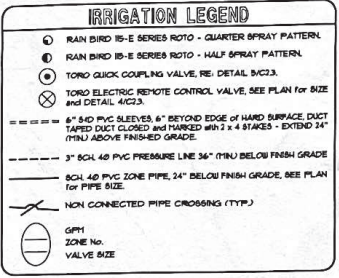
1. AREA OF OPERATIONS (AS INDICATED) SHALL PROVIDE CONSTRUCTION FENCES FOR DURATION OF DEMOLITION AND NEW CONSTRUCTION PHASES OF THE WORK, RE: SPEC. SECTION 0505.
2. CONTRACTOR SHALL FIELD LOCATE ALL UTILITIES AND FIELD VERIFY ALL EXIST. CONDITIONS PRIOR TO BEGINNING ANY DEMO OR NEW CONSTRUCTION WORK.
3. TRENCHING AND CONNECTION WORK FOR NEW SITE UTILITIES SHALL BE PROVIDED BY THE CONTRACTOR.
4. ALL CONCRETE SLABWORK SHALL BE 4" THK UNLESS OTHERWISE NOTED; POURED-IN-PLACE CONCRETE, INTEGRAL-COLORED CONCRETE WHERE NOTED; SLOPE 1/4" PER 12" OVER UNFORMED, GRADED AND COMPACTED APPROVED FILL MATERIAL, BASE OR UNDISTURBED AND COMPACTED EXIST. SOIL, BASE, RE: SPEC. SECTIONS 310000 AND 310000.
5. REBUILDINGS ALL NEW 8" MAN PIPINGS INDICATED SHALL BE CHAIN LINK FENCE, RE: SPEC. SECTION 32000.

DESIGN-BUILD IRRIGATION SYSTEM for SEEDED GRASS AREAS

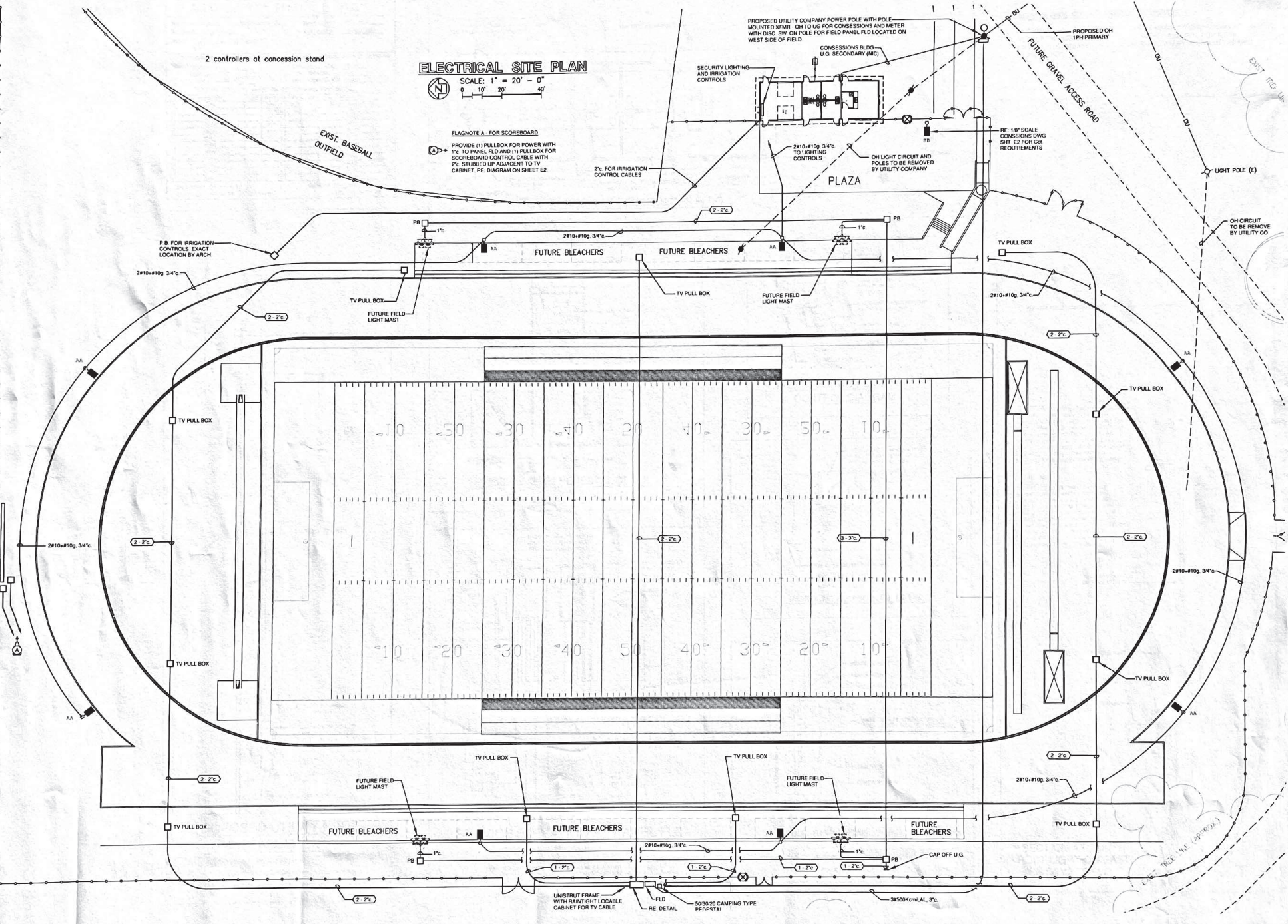
- DESIGN-BUILD IRRIGATION FOR SEEDED GRASS AREAS IRRIGATION DESIGN FOR SEEDED GRASS AREAS SHALL BE DESIGN-BUILD BASED ON SPECIFIED IRRIGATION AND MATERIAL TYPES IN SPEC. SECTION 330000 AND DETAILS ON THIS SHEET.

LANDSCAPE LEGEND

- SEEDED GRASS AREAS INDICATED THIS SHALL BE HYDRO-MULCHED SEED MIX OVER RELOCATED AND REINSTALLED EXIST. TOP SOIL (PREVIOUSLY STOCKPILED) OVER SCARIFIED AND GRADED EXIST. SOIL, SUB-GRADE OR COMPACTED APPROVED SOIL, BACKFILL - ROTO-TILL IN RELOCATED EXIST. TOP SOIL, AND NEW HARUS MATL. - ADD AND RAKE IN FERTILIZER THROUGHOUT ALL AREAS INDICATED TO RECEIVE GRASS SEED PER SPEC. SECTION 32000 - WATER AND THOROUGHLY ROAM. ALL SEEDED AREAS TO DEPTH OF 6" (150MM) PRIOR TO INSTALLATION OF GRASS-LED SEED AND STRAW MULCH, RE: SPEC. SECTION 32000 FOR SEED MIX.



HIGGIE ARCHITECTS
 455 N. 30th St.
NEW MULTI-PURPOSE ATHLETIC COMPLEX
 COLORADO CITY METROPOLITAN DISTRICT
 GREENHORN MEADOWS PARK 9000 3077-181 COLORADO CITY, CO 81001
 DATE: 07-20-01
 DRAWN: TJ
 CHECK: CR
 REVISIONS:
C2.3



ELECTRICAL SITE PLAN

SCALE: 1" = 20' - 0"



FLAGNOTE A FOR SCOREBOARD
 PROVIDE (1) PULL BOX FOR POWER WITH 1" TO PANEL FLD AND (1) PULL BOX FOR SCOREBOARD CONTROL CABLE WITH 2" STUBBED UP ADJACENT TO TV CABINET RE DIAGRAM ON SHEET E2

2" FOR IRRIGATION CONTROL CABLES

PROPOSED UTILITY COMPANY POWER POLE WITH POLE MOUNTED 50/100 OH 10 US FOR CONCESSIONS AND METER WITH DISC SW ON POLE FOR FIELD PANEL FLD LOCATED ON WEST SIDE OF FIELD

CONCESSIONS BLDG. U.G. SECONDARY (INC.)

SECURITY LIGHTING AND IRRIGATION CONTROLS

PROPOSED OH 1PH PRIMARY

FUTURE GRAVEL ACCESS ROAD

RE 1/8" SCALE CONCESSIONS DWG SHFT E2 FOR CSE REQUIREMENTS

OH LIGHT CIRCUITRY AND POLES TO BE REMOVED BY UTILITY COMPANY

LIGHT POLE (E)

OH CIRCUIT TO BE REMOVED BY UTILITY CO

P.B. FOR IRRIGATION CONTROLS. EXACT LOCATION BY ARCH

FUTURE BLEACHERS

FUTURE BLEACHERS

TV PULL BOX

FUTURE FIELD LIGHT MAST

TV PULL BOX

TV PULL BOX

TV PULL BOX

TV PULL BOX

TV PULL BOX

TV PULL BOX

TV PULL BOX

TV PULL BOX

TV PULL BOX

FUTURE BLEACHERS

FUTURE BLEACHERS

FUTURE BLEACHERS

UNISTRUT FRAME WITH RAINIGHT LOCABLE CABINET FOR TV CABLE

FLD 50/30/20 CAMPING TYPE 96/10/5/1A

3#5000kV.MIL. 3"

HGIF ARCHITECTS
 429 W 10 ST.
 FLEETWOOD, CO.
NEW MULTI-PURPOSE ATHLETIC COMPLEX
 COLORADO CITY METROPOLITAN DISTRICT
 GREENHORN MEADOWS PARK, 9000 HWY. 165, COLORADO CITY, CO. 80109
 DATE: _____
 DRAWN: MSK
 CHECK: LMAK
 REVISIONS: _____
 ELECTRICAL SITE PLAN
 SHEET **E1**

SCHEDULE FOR PANEL FLD

VOLTS/PHASE/WIRE 120/2/40/1ph-3w MAIN DEVICE 200A MCB
 MOUNTING SURFACE 120/2/40/1ph-3w S.C. RATING 10,000 AC
 NOTES: Provide with 'SUSE' Label N/A

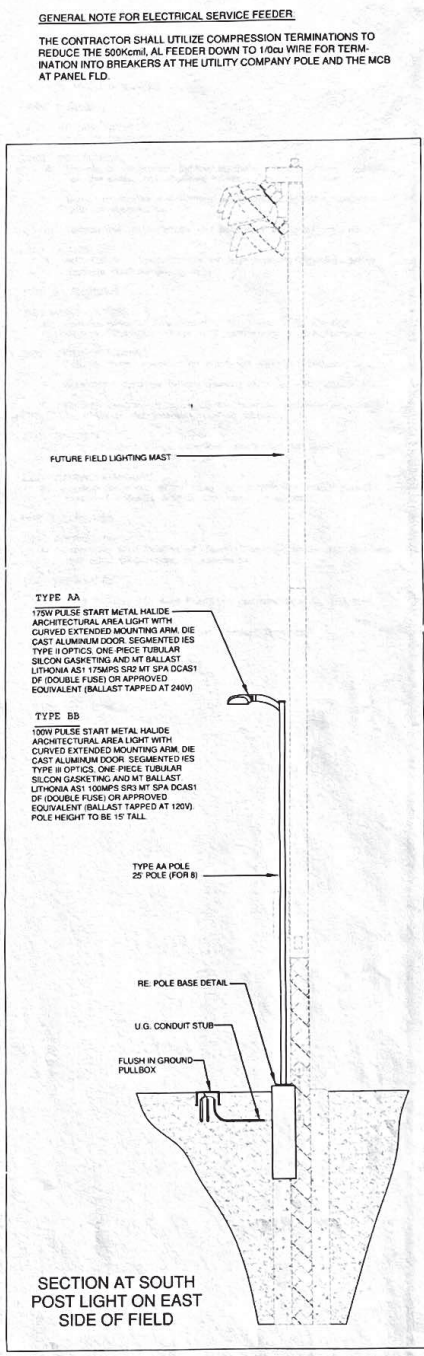
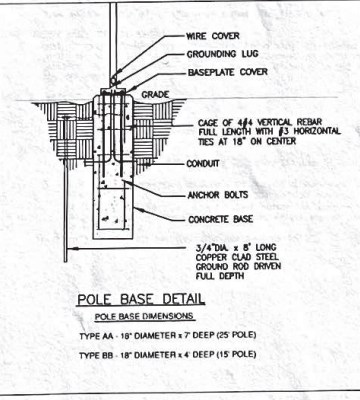
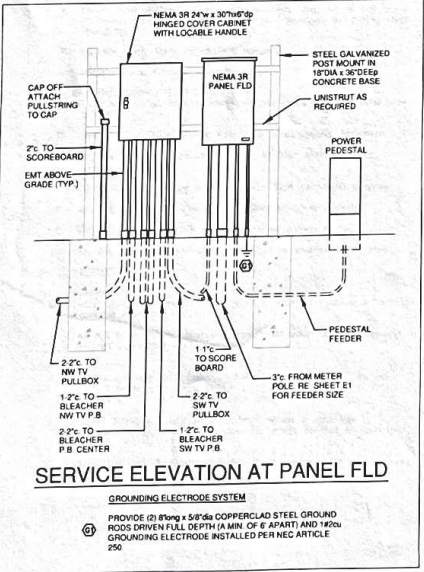
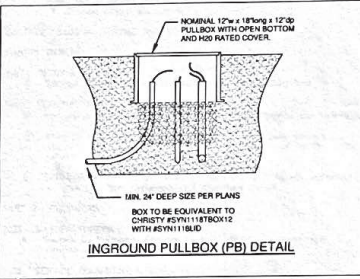
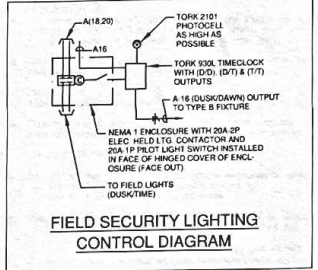
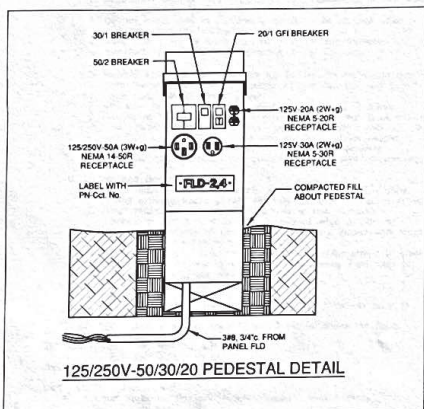
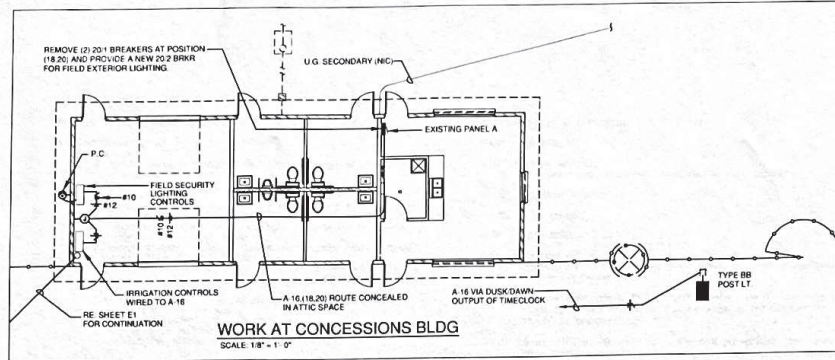
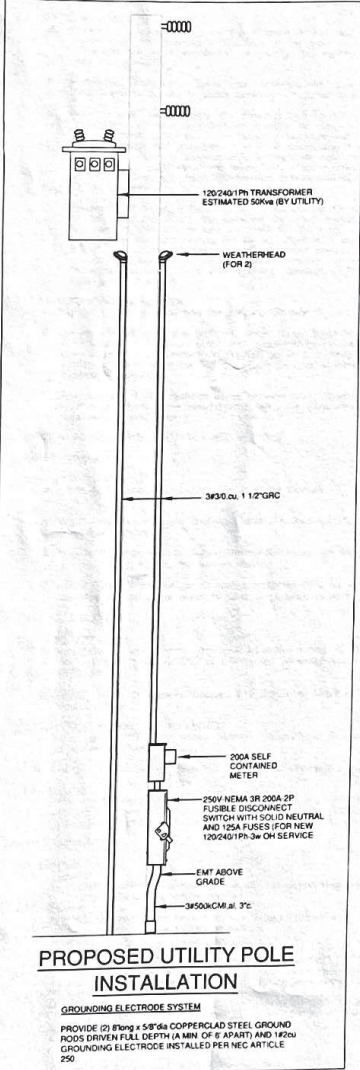
LOAD FACTOR INCLUDES NEC CONTINUOUS DUTY LOAD, NEC DEMAND FACTOR, AND DEMAND APPLIED BY THE DESIGNER

PHASE A (KVA) 9.6 CONNECTED KVA 19.20
 PHASE B (KVA) 9.6 LOAD FACTOR 1.00
 PHASE C (KVA) N/A DUTY/DEMAND KVA 19.20

AVERAGE AMPS/LEG BASED ON DUTY/DEMAND KVA 80.0

#	DESCRIPTION	LOAD	BRKR	TRIP	LOAD	DESCRIPTION	#
1	Space	20/1	A	50/2	5,000	Power Protection All Ph.	1
2	Space	20/1	B	50/2	5,000	Do	2
3	Space	20/1	A	50/2	5,000	Do	3
4	Space	20/1	B	50/2	5,000	Do	4
5	Space	20/1	A	50/2	5,000	Do	5
6	Space	20/1	B	50/2	5,000	Do	6
7	Space	20/1	A	50/2	5,000	Do	7
8	Space	20/1	B	50/2	5,000	Do	8
9	Space	20/1	A	50/2	5,000	Do	9
10	Space	20/1	B	50/2	5,000	Do	10
11	Space	20/1	A	50/2	5,000	Do	11
12	Space	20/1	B	50/2	5,000	Do	12
13	Space	20/1	A	50/2	5,000	Do	13
14	Space	20/1	B	50/2	5,000	Do	14
15	Space	20/1	A	50/2	5,000	Do	15
16	Space	20/1	B	50/2	5,000	Do	16
17	Space	20/1	A	50/2	5,000	Do	17
18	Space	20/1	B	50/2	5,000	Do	18
19	Space	20/1	A	50/2	5,000	Do	19
20	Space	20/1	B	50/2	5,000	Do	20
21	Space	20/1	A	50/2	5,000	Do	21
22	Space	20/1	B	50/2	5,000	Do	22
23	Space	20/1	A	50/2	5,000	Do	23
24	Space	20/1	B	50/2	5,000	Do	24

ENCLOSURE TYPE: NEMA 3R BREAKER TYPE: BOLT ON
 CLASS OF EQUIPMENT: PANELBOARD NO. CIRCUITS: 24



DIVISION 16 - ELECTRICAL
SECTION 16010 - BASIC REQUIREMENTS

PART 1 GENERAL

1.01 GENERAL

- A. Coordinate with Owner for final placement of all devices and type installed.
- 1.02 SUMMARY OF WORK
- A. Work Included: Unless specified otherwise, provide all labor, materials and equipment necessary for completely finished and operational systems. Provide all minor incidental items such as offsets, fittings, etc. required as part of the work even though not specified or indicated.

- B. Description of Systems: The work of Division 16 includes but is not limited to:
1. Service and Power Distribution
 2. Exterior Lighting - Post Lighting Fixtures
- C. Existing Utilities: Locate Existing Utilities prior to trench for underground conduits. Patch or repair all damage to such.

1.03 COORDINATION

- A. General: Coordinate and order the progress of Electrical work to conform to the progress of the work of the other trades. Complete the entire installation as soon as the condition of the site will permit.
- B. Installation Procedures: Confer and cooperate with other trades. Coordinate ceiling cavity space carefully with other trades.
- C. Drawings and Specifications: The Drawings and Specifications are complementary; what is called for in either of these is binding as though called for by both. The Electrical Drawings indicate the general design and arrangement of lines, equipment, systems, etc. Information shown is diagrammatic in character and does not indicate every required offset, fitting, etc. Take dimensions, locations, levels, etc. from Architectural Drawings & equipment to be furnished.
- D. Discrepancies: Examine Drawings and Specifications for other parts of the work, and if any discrepancies occur between the plans for the work of this Division and the plans for the work of others, report such discrepancies to the General Contractor and obtain written instructions for any changes necessary. Should there be a conflict in the dimensions or locations between Electrical Drawings and Architectural Drawings, the Architectural Drawings shall have precedence.

1.04 REGULATORY REQUIREMENTS

- A. Pay for permit & inspection fee costs applicable to work of Div 16.
- B. Comply with all applicable National, State, Local Requirements, Ordinances and Codes. Comply with requirements of the Utility Companies. Call for inspections required by local building inspection authority. Submit certificate of occupancy or final acceptance by inspection authority.
- C. Discrepancies: If discrepancies occur between these Specifications, local codes, local Utility requirements, etc., the most stringent requirements shall apply.

SECTION 16050 - BASIC MATERIALS AND METHODS

PART 1 GENERAL

1.01 SECTION INCLUDES

- A. Wires and Cables, Boxes, Cabinets & Wiring Devices

1.02 DESCRIPTION

- A. Install wiring in complete raceway systems unless specifically indicated otherwise.
- B. Provide Electrical Metallic Tubing throughout except as indicated on drawings (i.e. GRC for Service Masts).
- C. Utilize Schedule 80 PVC or Corrosion protected GRC for locations installed directly below concrete (slab on grade), in earth or gravel.

PART 2 PRODUCTS

2.01 WIRE AND CABLE

- A. Feeder Conductors: Copper, minimum insulation rating 75 degrees C (THW, THWN, XHHW, XHHW2) or Compacted Stranded Aluminum 8800 grade.
- B. Branch Circuit Conductors: Copper, #12 minimum, THWN or THHN insulated only.

2.02 OUTLET, JUNCTION, AND PULLBOXES

- A. Boxes Up to 150 Cubic Inches: Standard, one piece, zinc-coated, or cadmium plated steel.
- B. Inground Pull Boxes as described on Contract Drawings.

2.03 CABINETS

- A. Metal construction conforming to National Electrical Code; finish painted; equipped with locking door, concealed flush hinges, lock, and catch assembly. All locks keyed alike.

PART 3 EXECUTION

3.01 PREPARATION

- A. Supports:

1. Support raceways, cabinets, boxes etc., in accordance with Section 16190, Supporting Devices.

B. Sleeves:

1. Install sleeves where raceways pass through concrete construction. Locate sleeves accurately.

C. Excavation and Backfill:

1. Coordinate with other trades for these requirements
2. Verify locations of all existing and/or new underground utilities prior to trenching and, if damaged, replace immediately in an approved manner at no expense to Owner.
3. Clear trench of all sharp edge objects prior to the installation of conduit. Utilize a compacting fill type material. Compaction required. Refer to Architectural Requirements.

SECTION 16050 - BASIC MATERIALS AND METHODS Continued

3.02 INSTALLATION

A. Conduits:

1. Install Corrosion Protected GRC Elbows in runs of plastic conduit containing more than two quarter bends.
2. Cross expansion joints w/expansion fittings & bonding conductor.
3. Space supports for raceways not more than 7 feet on center.
4. Route exposed conduit parallel or perpendicular to walls and structural members, with neat right angle bends or change direction with conduit fitting.
5. Install conduits at least 6 inches from parallel runs of flues, steam lines, or other heated lines.
6. Effectively seal conduit penetrations through fire walls & floors through the use of rated fittings such as OZ "OTSF" series fittings or equivalent.
7. Provide waterproofing for all conduits, outlets, fittings, etc., which penetrate the roof.
8. Provide double locknuts & bushings on rigid conduit terminations.
9. Provide short extensions of flexible liquid-tight metallic conduit for makeup of motors or equipment.

B. Surface Raceways:

1. Make raceway connections & terminations w/appropriate fittings.
2. Installation shall provide a complete and continuous ground path.

C. Wire and Cable:

1. Do not install wire in incomplete conduit runs or until after concrete work & plastering is completed.
2. Make branch circuit and terminations with insulated pressure type connectors equivalent to 3M Company "Scotchlok".
3. Provide #10 AWG minimum wire for branch circuits whose length from panel to first outlet exceeds 75 feet for 120 volt Ccts.
4. Color code for 120/240V power:
Ph A - Black, Ph B - Red, Neut - White, Gnd - Green.
5. Provide an insulated equipment grounding conductor in all feeder and power branch circuits. Size conductor to table 250-122 of the NEC unless indicated otherwise on the Contract Drawings.
6. Provide insulating grommets in steel stud openings when installing cables through pre-punched or field punched openings.

D. Outlets and Boxes:

1. Install flush boxes plumb, within 1/8 inch of finished surface.
2. Install exposed boxes plumb, securely anchored to ceiling or wall.
3. Install outlets serving recessed fixtures in non-accessible ceilings at ceiling level within 6 inches of edge of opening.
4. Coordinate locations of junction boxes and pull boxes with other trades so that boxes remain accessible.
5. Provide additional cross bracing, bridging, and/or straps in steel wall stud installations to make outlet completely rigid prior to the application of the wall facing material.

E. Cabinets:

1. Coordinate depth of flush cabinets with wall thickness prior to purchase.
2. Set enclosure at minimum 8 feet 3 inches above the floor.

SECTION 16190 - SUPPORTING DEVICES

PART 1 GENERAL

1.01 SECTION INCLUDES

- A. Conduit Supports, Box and Cabinet Supports and Anchors

PART 2 PRODUCTS

2.01 CONDUIT SUPPORTS

- A. Single Runs: Galvanized one hole or two straps, lay-in adjustable hangers, clew hangers, or bolted split stamped galvanized steel hangers.
- B. Multiple Runs: Rack on channel supports.
- C. Vertical Runs: Channel support.

2.02 BOX AND CABINET SUPPORTS

- A. Flush Wall Outlet Boxes: Galvanized one piece stamped steel stud bridges.
- B. Flush Ceiling Outlet Boxes: Adjustable steel channel fasteners.
- C. Surface Mounted Cabinets: Minimum of four anchors.

2.03 ANCHORS

- A. Hollow Masonry: Toggle bolts or spiker type expansion anchors.
- B. Solid Masonry: Lead expansion anchors or preset inserts.
- C. Metal Surfaces: Machine screws, bolts or welded studs.
- D. Concrete Surfaces: Self-drilling anchors or powder driven studs.

PART 3 EXECUTION

3.01 PREPARATION

- A. Obtain permission before using powder actuated anchors or drilling structural members.
- B. Lay out to maintain headroom, neat mechanical appearance, and to support equipment loads required.

3.02 INSTALLATION

- A. Support conduits from building roof or floor structure. Do not support from ceiling suspension support systems, refer to Art. 300-11 of the NEC for exceptions that may apply.
- B. Support boxes independent of conduit unless a cast box is connected to galvanized rigid conduits where conduit is supported within 12 inches of box.
- C. Support surface mounted cabinets with a minimum of four anchors.

SECTION 16195 - ELECTRICAL IDENTIFICATION

PART 1 GENERAL

1.01 SECTION INCLUDES

- A. Directory Cards, Engraved Nameplates & Tape Labels
- B. Engraved Nameplates.

C. Tape Labels

PART 2 PRODUCTS

2.01 MATERIALS

- A. Engraved Plastic Nameplates: Black letters on a white background with self-adhesive back.
- B. Adhesive Tape Labels: Black imprinted letters on a clear tape as made by a tape imprinting machine such as the Brother "P-Touch" or approved equivalent.
- C. Directory Cards: Manufacturer's standard pre-printed form under clear plastic protective cover.

PART 3 EXECUTION

3.01 PREPARATION

- A. No temporary type of markings which are visible on equipment are permitted. Repaint trim, housing, etc. where such markings cannot readily be removed. Defaced finishes must be refinished.
- B. Thoroughly clean surface to which pressure sensitive type tape labels are applied to assure adherence of label.

3.02 INSTALLATION

- A. Label panelboards as designated on electrical drawings.
- B. Directory cards, nameplates, and labels shall indicate the general area and type of electrical load served by each circuit.

3.03 SCHEDULE OF LABELS

- A. Provide 1/2 inch minimum height letters engraved in plastic laminate nameplates to identify the equipment item for:
1. Branch and distribution panelboards.
- B. Provide 1/8 inch minimum height laser etched or engraved device plates identifying function or equipment controlled for:
1. Exhaust fans
 2. Light switches controlling lights that are out of sight.
 3. Remote test/indicator devices associated with smoke detectors.
- C. Provide neatly typed directories or identification labels. Use 12 or 15 pitch type as appropriate to assure adequate information is included in small spaces Use on:
1. Branch circuit panelboard directories.

SECTION 16400 - SERVICE AND DISTRIBUTION

PART 1 GENERAL

1.01 SECTION INCLUDES

- A. Service Equipment, Panel Boards and Safety Switches.

1.02 DESCRIPTION

- A. Provide a new 120/240/1Ph-3W Service Entrance per Drawings.
- B. Arrange with utility company for exact secondary service requirements. Consult with Son Label Electric as to the extent of their work and costs involved.
- C. Distribute power to all loads via feeders and panels indicated on the Contract Drawings and specified herein.

PART 2 PRODUCTS

2.01 MANUFACTURERS

- A. Square D, Siemens, General Electric, Cutler Hammer and Crouse Hinds

2.02 SERVICE EQUIPMENT

- A. Nema 3R - Main Main Fusible Switch.

2.03 BRANCH CIRCUIT PANELBOARDS - BOLT ON BREAKERS

- A. Class of Equipment: 120/240 volt; equivalent to Square D type NCOB, Nema 3R Construction Rated Min. 10,000 AC.

2.05 HEAVY DUTY SAFETY SWITCHES

- A. Type: Enclosed, fusable and non-fusable, heavy duty, UL labeled in proper NEMA type enclosure for the environment in which it is installed. Operating handles must be capable of being locked in the off position.

PART 3 EXECUTION

3.01 INSTALLATION

- A. Install conductors and raceways under provisions of Section 16050.
- B. Panelboards:
1. Mount branch circuit panel 6 feet 3 inches (to top of trim) above finished grade.
 2. Install feeder conductors in panels to provide a minimum of 24 inches of exposed conductor between the conduit bushing and the final termination (i.e. where feeder enters the bottom of the panel use top lugs and where feeder enters top of panel use bottom lugs).
 3. Identify conductors and breakers per Section 16195.

SECTION 16500 - LIGHTING

PART 1 GENERAL

1.01 SECTION INCLUDES

- A. Exterior Lighting

1.02 DESCRIPTION

- A. Provide all luminaires, lighting equipment, and components shown on the plans, and specified herein. Furnish complete.
- B. Deliver luminaires and lighting equipment to the site complete with all accessories.
- C. Furnish and install lamps and accessory wiring as required.

1.03 REFERENCES

- A. ANSI C82.4 - Specifications for High Intensity Discharge Lamp Ballasts (Multiple Supply Type).

PART 2 PRODUCTS

2.01 MANUFACTURERS

- A. Specific types of manufacturers are listed in the Lighting Fixture Schedule. Fixtures shall bear name of manufacturer.

2.02 EXTERIOR FIXTURES

- A. Fixtures: Types specified on plans and Fixture Schedule.
- B. Assembly to provide reliable starting down to -20 degrees F.
- C. Fixtures shall be UL approved for locations installed, i.e., damp locations or wet locations, and so labeled.

2.03 BALLASTS

- A. H.I.D.: Encapsulated or otherwise constructed for quiet operation, and conforming to ANSI C82.4.

2.03 LIGHTING STANDARDS

- A. Lighting Standards to be rated for 100MPH winds with a gust factor of 150MPH. Include with Handhole at base.

PART 3 EXECUTION

3.01 PREPARATION

- A. Coordinate final location of Lighting Standard boxes with Architect and other trades prior to installation.

3.02 INSTALLATION

- A. Install Lighting Standard Plumb on concrete base as indicated on the Contract Drawings.
- B. Ground Lighting Standards per Contract Drawings.

NEW MULTI-PURPOSE ATHLETIC COMPLEX
COLORADO CITY METROPOLITAN DISTRICT
GREENHORN MEADOWS PARK, 8000 HWY. 165, COLORADO CITY, CO 81009

458 W. 10th ST.
FEELEO, CO.
ARCHITECTS

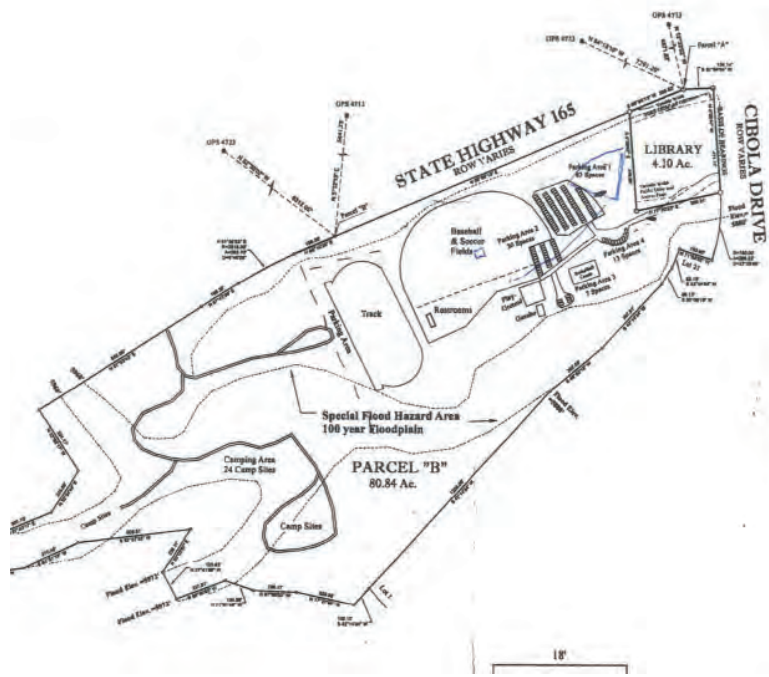
ELECTRICAL SPECIFICATIONS

DATE _____
DRAWN: MSK
CHECK: LMAK
REVISIONS: _____

SHEET
E3

**PARKING PLAN
SUBDIVISION EXHIBIT**

A Parcel of land being a portion of Parcel portion of Sections 23, 24, 25 and 26, T 7 P.M., Pueblo



PARCEL "B"
 LEGAL DESCRIPTION: Pa
 OWNER: Colorado City Mall
 P.O. Box 20229
 Colorado City, CO
 TAX PARCEL NO: 4726204
 EXISTING FACILITIES:
 Two baseball/soccer fields, 1
 campground area, Storage
 Total number of parking spaces
 Gazebo: 7 spaces; 13 spaces
 Handicap Spaces: 7 total as
 Total number of Campgrounds

Recreation Area Required Parking:
 Athletic Field (including but not limited
 20 per diamond or oval
 Athletic Sports Multi-Use Facility Field
 Baseball Court 6 per full court
 Park
 1 per one-half acre of developed park
 additional acre of developed park are

IPaC resource list

This report is an automatically generated list of species and other resources such as critical habitat (collectively referred to as *trust resources*) under the U.S. Fish and Wildlife Service's (USFWS) jurisdiction that are known or expected to be on or near the project area referenced below. The list may also include trust resources that occur outside of the project area, but that could potentially be directly or indirectly affected by activities in the project area. However, determining the likelihood and extent of effects a project may have on trust resources typically requires gathering additional site-specific (e.g., vegetation/species surveys) and project-specific (e.g., magnitude and timing of proposed activities) information.

Below is a summary of the project information you provided and contact information for the USFWS office(s) with jurisdiction in the defined project area. Please read the introduction to each section that follows (Endangered Species, Migratory Birds, USFWS Facilities, and NWI Wetlands) for additional information applicable to the trust resources addressed in that section.

Location

Pueblo County, Colorado



Local office

Colorado Ecological Services Field Office

☎ (303) 236-4773

📅 (303) 236-4005

MAILING ADDRESS

Denver Federal Center

P.O. Box 25486

Denver, CO 80225-0486

PHYSICAL ADDRESS

134 Union Boulevard, Suite 670

Lakewood, CO 80228-1807

Endangered species

This resource list is for informational purposes only and does not constitute an analysis of project level impacts.

The primary information used to generate this list is the known or expected range of each species. Additional areas of influence (AOI) for species are also considered. An AOI includes areas outside of the species range if the species could be indirectly affected by activities in that area (e.g., placing a dam upstream of a fish population even if that fish does not occur at the dam site, may indirectly impact the species by reducing or eliminating water flow downstream). Because species can move, and site conditions can change, the species on this list are not guaranteed to be found on or near the project area. To fully determine any potential effects to species, additional site-specific and project-specific information is often required.

Section 7 of the Endangered Species Act **requires** Federal agencies to "request of the Secretary information whether any species which is listed or proposed to be listed may be present in the area of such proposed action" for any project that is conducted, permitted, funded, or licensed by any Federal agency. A letter from the local office and a species list which fulfills this requirement can **only** be obtained by requesting an official species list from either the Regulatory Review section in IPaC (see directions below) or from the local field office directly.

For project evaluations that require USFWS concurrence/review, please return to the IPaC website and request an official species list by doing the following:

1. Draw the project location and click CONTINUE.
2. Click DEFINE PROJECT.
3. Log in (if directed to do so).
4. Provide a name and description for your project.
5. Click REQUEST SPECIES LIST.

Listed species¹ and their critical habitats are managed by the [Ecological Services Program](#) of the U.S. Fish and Wildlife Service (USFWS) and the fisheries division of the National Oceanic and Atmospheric Administration (NOAA Fisheries²).

Species and critical habitats under the sole responsibility of NOAA Fisheries are **not** shown on this list. Please contact [NOAA Fisheries](#) for [species under their jurisdiction](#).

-
1. Species listed under the [Endangered Species Act](#) are threatened or endangered; IPaC also shows species that are candidates, or proposed, for listing. See the [listing status page](#) for more information. IPaC only shows species that are regulated by USFWS (see FAQ).
 2. [NOAA Fisheries](#), also known as the National Marine Fisheries Service (NMFS), is an office of the National Oceanic and Atmospheric Administration within the Department of Commerce.

The following species are potentially affected by activities in this location:

Mammals

NAME

STATUS

Gray Wolf *Canis lupus*

Endangered

This species only needs to be considered if the following condition applies:

- Lone, dispersing gray wolves may be present throughout the state of Colorado. If your activity includes a predator management program, please consider this species in your environmental review.

There is **final** critical habitat for this species.

<https://ecos.fws.gov/ecp/species/4488>

Birds

NAME

STATUS

Eastern Black Rail *Laterallus jamaicensis*

Threatened

ssp. jamaicensis

Wherever found

No critical habitat has been designated for this species.

<https://ecos.fws.gov/ecp/species/10477>

Fishes

NAME

STATUS

Greenback Cutthroat Trout

Threatened

Oncorhynchus clarkii stomias

Wherever found

No critical habitat has been designated for this species.

<https://ecos.fws.gov/ecp/species/2775>

Insects

NAME	STATUS
Monarch Butterfly <i>Danaus plexippus</i> Wherever found No critical habitat has been designated for this species. https://ecos.fws.gov/ecp/species/9743	Candidate

Critical habitats

Potential effects to critical habitat(s) in this location must be analyzed along with the endangered species themselves.

There are no critical habitats at this location.

You are still required to determine if your project(s) may have effects on all above listed species.

Bald & Golden Eagles

Bald and golden eagles are protected under the [Bald and Golden Eagle Protection Act](#) and the [Migratory Bird Treaty Act](#).

Any person or organization who plans or conducts activities that may result in impacts to bald or golden eagles, or their habitats, should follow appropriate regulations and consider implementing appropriate conservation measures, as described [below](#).

Additional information can be found using the following links:

- Eagle Management <https://www.fws.gov/program/eagle-management>
- Measures for avoiding and minimizing impacts to birds <https://www.fws.gov/library/collections/avoiding-and-minimizing-incident-take-migratory-birds>
- Nationwide conservation measures for birds <https://www.fws.gov/sites/default/files/documents/nationwide-standard-conservation-measures.pdf>

There are bald and/or golden eagles in your project area.

For guidance on when to schedule activities or implement avoidance and minimization measures to reduce impacts to migratory birds on your list, click on the PROBABILITY OF PRESENCE SUMMARY at the top of your list to see when these birds are most likely to be present and breeding in your project area.

NAME	BREEDING SEASON
Bald Eagle <i>Haliaeetus leucocephalus</i> This is not a Bird of Conservation Concern (BCC) in this area, but warrants attention because of the Eagle Act or for potential susceptibilities in offshore areas from certain types of development or activities.	Breeds Oct 15 to Jul 31
Golden Eagle <i>Aquila chrysaetos</i> This is not a Bird of Conservation Concern (BCC) in this area, but warrants attention because of the Eagle Act or for potential susceptibilities in offshore areas from certain types of development or activities. https://ecos.fws.gov/ecp/species/1680	Breeds Dec 1 to Aug 31

Probability of Presence Summary

The graphs below provide our best understanding of when birds of concern are most likely to be present in your project area. This information can be used to tailor and schedule your project activities to avoid or minimize impacts to birds. Please make sure you read and understand the FAQ "Proper Interpretation and Use of Your Migratory Bird Report" before using or attempting to interpret this report.

Probability of Presence (■)

Each green bar represents the bird's relative probability of presence in the 10km grid cell(s) your project overlaps during a particular week of the year. (A year is represented as 12 4-week months.) A taller bar indicates a higher probability of species presence. The survey effort (see below) can be used to establish a level of confidence in the presence score. One can have higher confidence in the presence score if the corresponding survey effort is also high.

How is the probability of presence score calculated? The calculation is done in three steps:

1. The probability of presence for each week is calculated as the number of survey events in the week where the species was detected divided by the total number of survey events for that week. For example, if in week 12 there were 20 survey events and the Spotted Towhee was found in 5 of them, the probability of presence of the Spotted Towhee in week 12 is 0.25.
2. To properly present the pattern of presence across the year, the relative probability of presence is calculated. This is the probability of presence divided by the maximum probability of

presence across all weeks. For example, imagine the probability of presence in week 20 for the Spotted Towhee is 0.05, and that the probability of presence at week 12 (0.25) is the maximum of any week of the year. The relative probability of presence on week 12 is $0.25/0.25 = 1$; at week 20 it is $0.05/0.25 = 0.2$.

3. The relative probability of presence calculated in the previous step undergoes a statistical conversion so that all possible values fall between 0 and 10, inclusive. This is the probability of presence score.

To see a bar's probability of presence score, simply hover your mouse cursor over the bar.

Breeding Season (■)

Yellow bars denote a very liberal estimate of the time-frame inside which the bird breeds across its entire range. If there are no yellow bars shown for a bird, it does not breed in your project area.

Survey Effort (|)

Vertical black lines superimposed on probability of presence bars indicate the number of surveys performed for that species in the 10km grid cell(s) your project area overlaps. The number of surveys is expressed as a range, for example, 33 to 64 surveys.

To see a bar's survey effort range, simply hover your mouse cursor over the bar.

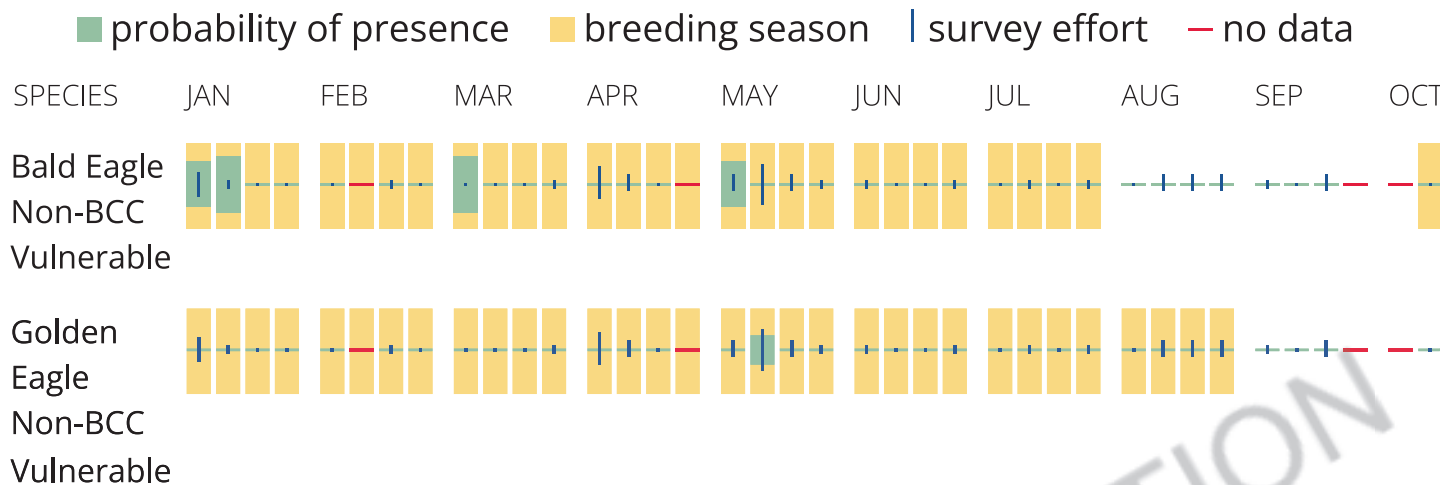
No Data (—)

A week is marked as having no data if there were no survey events for that week.

Survey Timeframe

Surveys from only the last 10 years are used in order to ensure delivery of currently relevant information. The exception to this is areas off the Atlantic coast, where bird returns are based on all

years of available data, since data in these areas is currently much more sparse.



What does IPaC use to generate the potential presence of bald and golden eagles in my specified location?

The potential for eagle presence is derived from data provided by the [Avian Knowledge Network \(AKN\)](#). The AKN data is based on a growing collection of [survey, banding, and citizen science datasets](#) and is queried and filtered to return a list of those birds reported as occurring in the 10km grid cell(s) which your project intersects, and that have been identified as warranting special attention because they are a BCC species in that area, an eagle ([Eagle Act](#) requirements may apply). To see a list of all birds potentially present in your project area, please visit the [Rapid Avian Information Locator \(RAIL\) Tool](#).

What does IPaC use to generate the probability of presence graphs of bald and golden eagles in my specified location?

The Migratory Bird Resource List is comprised of USFWS [Birds of Conservation Concern \(BCC\)](#) and other species that may warrant special attention in your project location.

The migratory bird list generated for your project is derived from data provided by the [Avian Knowledge Network \(AKN\)](#). The AKN data is based on a growing collection of [survey, banding, and citizen science datasets](#) and is queried and filtered to return a list of those birds reported as occurring in the

10km grid cell(s) which your project intersects, and that have been identified as warranting special attention because they are a BCC species in that area, an eagle ([Eagle Act](#) requirements may apply), or a species that has a particular vulnerability to offshore activities or development.

Again, the Migratory Bird Resource list includes only a subset of birds that may occur in your project area. It is not representative of all birds that may occur in your project area. To get a list of all birds potentially present in your project area, please visit the [Rapid Avian Information Locator \(RAIL\) Tool](#).

What if I have eagles on my list?

If your project has the potential to disturb or kill eagles, you may need to obtain a permit to avoid violating the [Eagle Act](#) should such impacts occur. Please contact your local Fish and Wildlife Service Field Office if you have questions.

Migratory birds

Certain birds are protected under the Migratory Bird Treaty Act¹ and the Bald and Golden Eagle Protection Act².

Any person or organization who plans or conducts activities that may result in impacts to migratory birds, eagles, and their habitats should follow appropriate regulations and consider implementing appropriate conservation measures, as described [below](#).

-
1. The [Migratory Birds Treaty Act](#) of 1918.
 2. The [Bald and Golden Eagle Protection Act](#) of 1940.

Additional information can be found using the following links:

- Birds of Conservation Concern
<https://www.fws.gov/program/migratory-birds/species>

- Measures for avoiding and minimizing impacts to birds
<https://www.fws.gov/library/collections/avoiding-and-minimizing-incident-take-migratory-birds>
- Nationwide conservation measures for birds
<https://www.fws.gov/sites/default/files/documents/nationwide-standard-conservation-measures.pdf>

The birds listed below are birds of particular concern either because they occur on the [USFWS Birds of Conservation Concern \(BCC\)](#) list or warrant special attention in your project location. To learn more about the levels of concern for birds on your list and how this list is generated, see the FAQ [below](#). This is not a list of every bird you may find in this location, nor a guarantee that every bird on this list will be found in your project area. To see exact locations of where birders and the general public have sighted birds in and around your project area, visit the [E-bird data mapping tool](#) (Tip: enter your location, desired date range and a species on your list). For projects that occur off the Atlantic Coast, additional maps and models detailing the relative occurrence and abundance of bird species on your list are available. Links to additional information about Atlantic Coast birds, and other important information about your migratory bird list, including how to properly interpret and use your migratory bird report, can be found [below](#).

For guidance on when to schedule activities or implement avoidance and minimization measures to reduce impacts to migratory birds on your list, click on the PROBABILITY OF PRESENCE SUMMARY at the top of your list to see when these birds are most likely to be present and breeding in your project area.

NAME

BREEDING SEASON

Bald Eagle *Haliaeetus leucocephalus*
This is not a Bird of Conservation Concern (BCC) in this area, but warrants attention because of the Eagle Act or for potential susceptibilities in offshore areas from certain types of development or activities.

Breeds Oct 15 to
Jul 31

Chimney Swift *Chaetura pelagica*
This is a Bird of Conservation Concern (BCC) throughout its range in the continental USA and Alaska.

Breeds Mar 15 to
Aug 25

Ferruginous Hawk *Buteo regalis*
This is a Bird of Conservation Concern (BCC) only in particular Bird Conservation Regions (BCRs) in the continental USA
<https://ecos.fws.gov/ecp/species/6038>

Breeds Mar 15 to
Aug 15

Golden Eagle *Aquila chrysaetos*
This is not a Bird of Conservation Concern (BCC) in this area, but warrants attention because of the Eagle Act or for potential susceptibilities in offshore areas from certain types of development or activities.
<https://ecos.fws.gov/ecp/species/1680>

Breeds Dec 1 to
Aug 31

Lewis's Woodpecker *Melanerpes lewis*
This is a Bird of Conservation Concern (BCC) throughout its range in the continental USA and Alaska.
<https://ecos.fws.gov/ecp/species/9408>

Breeds Apr 20 to
Sep 30

Pinyon Jay *Gymnorhinus cyanocephalus*
This is a Bird of Conservation Concern (BCC) throughout its range in the continental USA and Alaska.

<https://ecos.fws.gov/ecp/species/9420>

Breeds Feb 15 to
Jul 15

Red-headed Woodpecker *Melanerpes
erythrocephalus*

This is a Bird of Conservation Concern (BCC) throughout its range in the continental USA and Alaska.

Breeds May 10 to
Sep 10

Probability of Presence Summary

The graphs below provide our best understanding of when birds of concern are most likely to be present in your project area. This information can be used to tailor and schedule your project activities to avoid or minimize impacts to birds. Please make sure you read and understand the FAQ "Proper Interpretation and Use of Your Migratory Bird Report" before using or attempting to interpret this report.

Probability of Presence (■)

Each green bar represents the bird's relative probability of presence in the 10km grid cell(s) your project overlaps during a particular week of the year. (A year is represented as 12 4-week months.) A taller bar indicates a higher probability of species presence. The survey effort (see below) can be used to establish a level of confidence in the presence score. One can have higher confidence in the presence score if the corresponding survey effort is also high.

How is the probability of presence score calculated? The calculation is done in three steps:

1. The probability of presence for each week is calculated as the number of survey events in the week where the species was detected divided by the total number of survey events for that week. For example, if in week 12 there were 20 survey events and the Spotted Towhee was found in 5 of them, the probability of presence of the Spotted Towhee in week 12 is 0.25.
2. To properly present the pattern of presence across the year, the relative probability of presence is calculated. This is the probability of presence divided by the maximum probability of presence across all weeks. For example, imagine the probability of presence in week 20 for the Spotted Towhee is 0.05, and that the probability of presence at week 12 (0.25) is the maximum of any week of the year. The relative probability of presence on week 12 is $0.25/0.25 = 1$; at week 20 it is $0.05/0.25 = 0.2$.
3. The relative probability of presence calculated in the previous step undergoes a statistical conversion so that all possible values fall between 0 and 10, inclusive. This is the probability of presence score.

To see a bar's probability of presence score, simply hover your mouse cursor over the bar.

Breeding Season (■)

Yellow bars denote a very liberal estimate of the time-frame inside which the bird breeds across its entire range. If there are no yellow bars shown for a bird, it does not breed in your project area.

Survey Effort (|)

Vertical black lines superimposed on probability of presence bars indicate the number of surveys performed for that species in the 10km grid cell(s) your project area overlaps. The number of surveys

is expressed as a range, for example, 33 to 64 surveys.

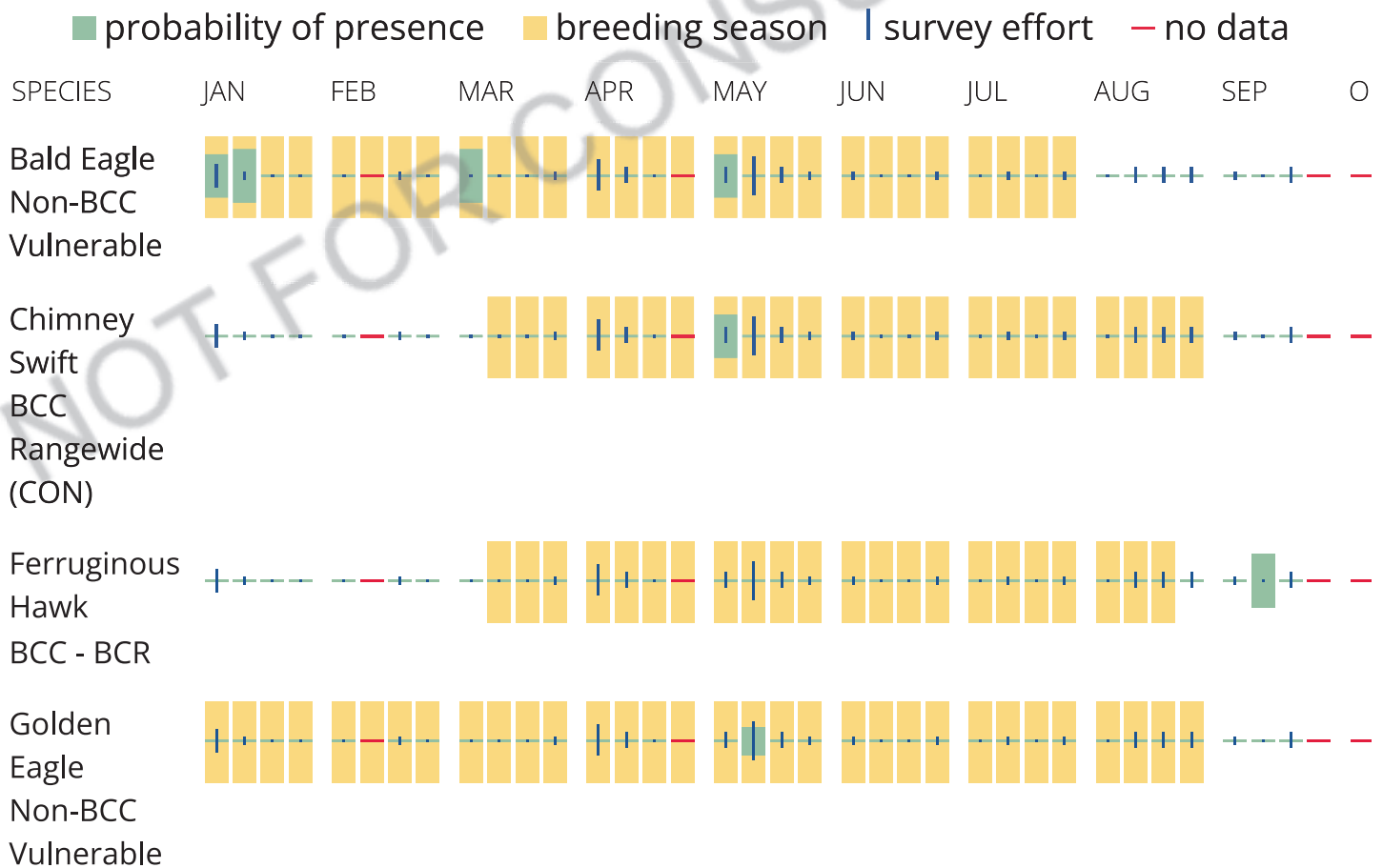
To see a bar's survey effort range, simply hover your mouse cursor over the bar.

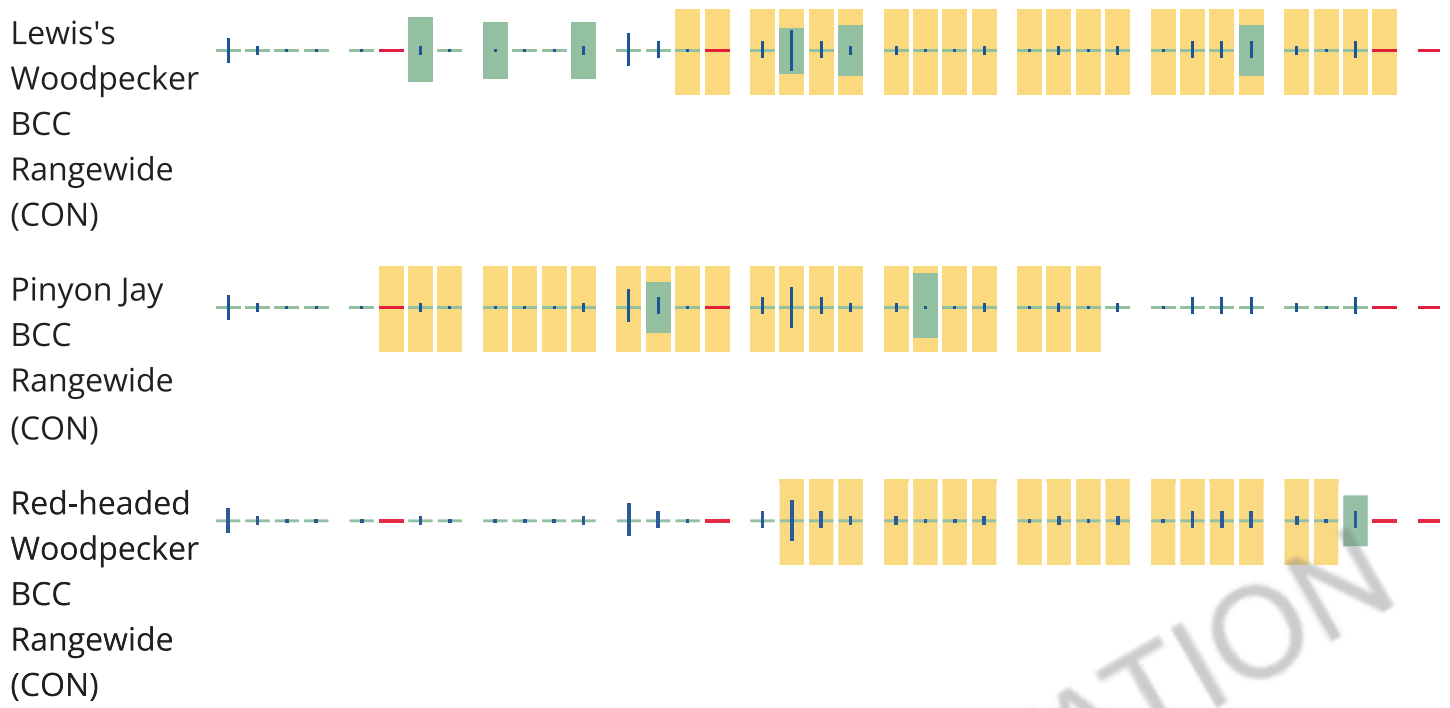
No Data (-)

A week is marked as having no data if there were no survey events for that week.

Survey Timeframe

Surveys from only the last 10 years are used in order to ensure delivery of currently relevant information. The exception to this is areas off the Atlantic coast, where bird returns are based on all years of available data, since data in these areas is currently much more sparse.





Tell me more about conservation measures I can implement to avoid or minimize impacts to migratory birds.

[Nationwide Conservation Measures](#) describes measures that can help avoid and minimize impacts to all birds at any location year round. Implementation of these measures is particularly important when birds are most likely to occur in the project area. When birds may be breeding in the area, identifying the locations of any active nests and avoiding their destruction is a very helpful impact minimization measure. To see when birds are most likely to occur and be breeding in your project area, view the Probability of Presence Summary. [Additional measures](#) or [permits](#) may be advisable depending on the type of activity you are conducting and the type of infrastructure or bird species present on your project site.

What does IPaC use to generate the list of migratory birds that potentially occur in my specified location?

The Migratory Bird Resource List is comprised of USFWS [Birds of Conservation Concern \(BCC\)](#) and other species that may warrant special attention in your project location.

The migratory bird list generated for your project is derived from data provided by the [Avian Knowledge Network \(AKN\)](#). The AKN data is based on a growing collection of [survey, banding, and citizen science datasets](#) and is queried and filtered to return a list of those birds reported as occurring in the 10km grid cell(s) which your project intersects, and that have been identified as warranting special attention because they are a BCC species in that area, an eagle ([Eagle Act](#) requirements may apply), or a species that has a particular vulnerability to offshore activities or development.

Again, the Migratory Bird Resource list includes only a subset of birds that may occur in your project area. It is not representative of all birds that may occur in your project area. To get a list of all birds potentially present in your project area, please visit the [Rapid Avian Information Locator \(RAIL\) Tool](#).

What does IPaC use to generate the probability of presence graphs for the migratory birds potentially occurring in my specified location?

The probability of presence graphs associated with your migratory bird list are based on data provided by the [Avian Knowledge Network \(AKN\)](#). This data is derived from a growing collection of [survey, banding, and citizen science datasets](#).

Probability of presence data is continuously being updated as new and better information becomes available. To learn more about how the probability of presence graphs are produced and how to interpret them, go the Probability of Presence Summary and then click on the "Tell me about these graphs" link.

How do I know if a bird is breeding, wintering or migrating in my area?

To see what part of a particular bird's range your project area falls within (i.e. breeding, wintering, migrating or year-round), you may query your location using the [RAIL Tool](#) and look at the range maps provided for birds in your area at the bottom of the profiles provided for each bird in your results. If a bird on your migratory bird species list has a breeding season associated with it, if that bird does occur in your project area, there may be nests present at some point within the timeframe specified. If "Breeds elsewhere" is indicated, then the bird likely does not breed in your project area.

What are the levels of concern for migratory birds?

Migratory birds delivered through IPaC fall into the following distinct categories of concern:

1. "BCC Rangewide" birds are [Birds of Conservation Concern](#) (BCC) that are of concern throughout their range anywhere within the USA (including Hawaii, the Pacific Islands, Puerto Rico, and the Virgin Islands);
2. "BCC - BCR" birds are BCCs that are of concern only in particular Bird Conservation Regions (BCRs) in the continental USA; and
3. "Non-BCC - Vulnerable" birds are not BCC species in your project area, but appear on your list either because of the [Eagle Act](#) requirements (for eagles) or (for non-eagles) potential susceptibilities in offshore areas from certain types of development or activities (e.g. offshore energy development or longline fishing).

Although it is important to try to avoid and minimize impacts to all birds, efforts should be made, in particular, to avoid and minimize impacts to the birds on this list, especially eagles and BCC species of rangewide concern. For more information on conservation measures you can implement to help avoid and minimize migratory bird impacts and requirements for eagles, please see the FAQs for these topics.

Details about birds that are potentially affected by offshore projects

For additional details about the relative occurrence and abundance of both individual bird species and groups of bird species within your project area off the Atlantic Coast, please visit the [Northeast Ocean Data Portal](#). The Portal also offers data and information about other taxa besides birds that may be helpful to you in your project review. Alternately, you may download the bird model results files underlying the portal maps through the [NOAA NCCOS Integrative Statistical Modeling and Predictive Mapping of Marine Bird Distributions and Abundance on the Atlantic Outer Continental Shelf](#) project webpage.

Bird tracking data can also provide additional details about occurrence and habitat use throughout the year, including migration. Models relying on survey data may not include this information. For additional information on

marine bird tracking data, see the [Diving Bird Study](#) and the [nanotag studies](#) or contact [Caleb Spiegel](#) or [Pam Loring](#).

What if I have eagles on my list?

If your project has the potential to disturb or kill eagles, you may need to [obtain a permit](#) to avoid violating the Eagle Act should such impacts occur.

Proper Interpretation and Use of Your Migratory Bird Report

The migratory bird list generated is not a list of all birds in your project area, only a subset of birds of priority concern. To learn more about how your list is generated, and see options for identifying what other birds may be in your project area, please see the FAQ "What does IPaC use to generate the migratory birds potentially occurring in my specified location". Please be aware this report provides the "probability of presence" of birds within the 10 km grid cell(s) that overlap your project; not your exact project footprint. On the graphs provided, please also look carefully at the survey effort (indicated by the black vertical bar) and for the existence of the "no data" indicator (a red horizontal bar). A high survey effort is the key component. If the survey effort is high, then the probability of presence score can be viewed as more dependable. In contrast, a low survey effort bar or no data bar means a lack of data and, therefore, a lack of certainty about presence of the species. This list is not perfect; it is simply a starting point for identifying what birds of concern have the potential to be in your project area, when they might be there, and if they might be breeding (which means nests might be present). The list helps you know what to look for to confirm presence, and helps guide you in knowing when to implement conservation measures to avoid or minimize potential impacts from your project activities, should presence be confirmed. To learn more about conservation measures, visit the FAQ "Tell me about conservation measures I can implement to avoid or minimize impacts to migratory birds" at the bottom of your migratory bird trust resources page.

Facilities

National Wildlife Refuge lands

Any activity proposed on lands managed by the [National Wildlife Refuge](#) system must undergo a 'Compatibility Determination' conducted by the Refuge. Please contact the individual Refuges to discuss any questions or concerns.

There are no refuge lands at this location.

Fish hatcheries

There are no fish hatcheries at this location.

Wetlands in the National Wetlands Inventory (NWI)

Impacts to [NWI wetlands](#) and other aquatic habitats may be subject to regulation under Section 404 of the Clean Water Act, or other State/Federal statutes.

For more information please contact the Regulatory Program of the local [U.S. Army Corps of Engineers District](#).

Please note that the NWI data being shown may be out of date. We are currently working to update our NWI data set. We recommend you verify these results with a site visit to determine the actual extent of wetlands on site.

This location overlaps the following wetlands:

RIVERINE

[R4SBC](#)

[R5UBH](#)

A full description for each wetland code can be found at the [National Wetlands Inventory website](#)

NOTE: This initial screening does **not** replace an on-site delineation to determine whether wetlands occur. Additional information on the NWI data is provided below.

Data limitations

The Service's objective of mapping wetlands and deepwater habitats is to produce reconnaissance level information on the location, type and size of these resources. The maps are prepared from the analysis of high altitude imagery. Wetlands are identified based on vegetation, visible hydrology and geography. A margin of error is inherent in the use of imagery; thus, detailed on-the-ground inspection of any particular site may result in revision of the wetland boundaries or classification established through image analysis.

The accuracy of image interpretation depends on the quality of the imagery, the experience of the image analysts, the amount and quality of the collateral data and the amount of ground truth verification work conducted. Metadata should be consulted to determine the date of the source imagery used and any mapping problems.

Wetlands or other mapped features may have changed since the date of the imagery or field work. There may be occasional differences in polygon boundaries or classifications between the information depicted on the map and the actual conditions on site.

Data exclusions

Certain wetland habitats are excluded from the National mapping program because of the limitations of aerial imagery as the primary data source used to detect wetlands. These habitats include seagrasses or submerged aquatic vegetation that are found in the intertidal and subtidal zones of estuaries and nearshore coastal waters. Some deepwater reef communities (coral or tubercid worm reefs) have also been excluded from the inventory. These habitats, because of their depth, go undetected by aerial imagery.

Data precautions

Federal, state, and local regulatory agencies with jurisdiction over wetlands may define and describe wetlands in a different manner than that used in this inventory. There is no attempt, in either the design or products of this inventory, to define the limits of proprietary jurisdiction of any Federal, state, or local government or to establish the geographical scope of the regulatory programs of government agencies. Persons intending to engage in activities involving modifications within or adjacent to wetland areas should seek the advice of appropriate Federal, state, or local agencies concerning specified agency regulatory programs and proprietary jurisdictions that may affect such activities.

Certification

LAND & WATER CONSERVATION FUND GRANT APPLICATION



PROJECT DETAILS

Organization	Colorado City Metro District
Project title	Greenhorn Meadows Park Revitalization

Match: Our entity is aware that LWCF is a 1:1 matching grant program and that match is available. Our entity is aware that failure to spend the minimum match amount listed in the project budget will reduce the amount of grant funds.

Reimbursement: Our entity is aware that LWCF uses a reimbursement model where grantees incur project costs before seeking reimbursement from CPW. Reimbursement requires submission of invoices, proof of payment and progress reports. Project costs (including match) must be incurred during the CPW contract period unless marked 'pre-award' on the project budget or a Waiver of Retroactivity applies.

Laws and regulations: Our entity will adhere to all applicable local, state and federal laws and regulations, as well as guidelines governing the LWCF program. This includes Build America Buy America (BABA).

LWCF boundary area: Properties receiving LWCF assistance must be maintained in perpetuity for public outdoor recreation. Our entity certifies that it shall record that the property has been dedicated to public outdoor recreation in perpetuity as per the LWCF Act on the real property title, prior to final reimbursement under this program.

Inspections: LWCF-assisted properties will be inspected at least once every five years after project completion by CPW and/or National Park Service (NPS) staff. If non-public recreation use is discovered, or is proposed on the property, our entity will work with State and/or NPS LWCF staff to determine and resolve any potential conversion issues.

ACKNOWLEDGEMENT

I have read and understood the criteria above. On behalf of the applicant entity, I certify to the best of my knowledge that the information in this application is true and correct.

Organization

Name	Colorado City Metro District			
Postal address	PO Box 20229			
City	Colorado City	State	CO	ZIP Code 81019

Authorized Representative

Signature		Date	10/20/2023
Name	James Eccher	Title	District Manager



**COLORADO CITY METROPOLITAN DISTRICT
PUBLIC NOTICE
BOARD OF DIRECTORS STUDY SESSION**

A study session for the Board of Directors of the Colorado City Metropolitan District will be held Tuesday October 31, 2023, beginning at 6:00 p.m.

1. Valley First progress report and acceptance of letter from district
Misty Spring reported that she is submitting a grant (land Grant) for 11M (15 steps for the process). Needs recognition from the Board that 50% of the funds go into project. Already has 754 + thousand and getting another 2M from Daniels Funds. If get all I will be 3.3M, the extra 1M will be used for lighting if received (icing on the cake!). She needs verbal approval during the Board meeting Acknowledging Project with the 50% CPW.

2. Discussion American Water Works Association
Gary stated that we were members of the AWWA like 6-7 years ago. Membership is approx. 4300 annually. Which will get us water auditing software which is free to members. It is good for small districts that need to audit water.

Prepare a resolution to become a member. Mr. Eccher to find out the exact cost of a Membership for the CCMD.

3. Buy and Sell Agreement Parcels #4724404008 & 47244044009.
Lots are zoned for townhomes in the South Park Area. They both have water & sewer & are on a paved road, no HOA fee. The parking lot area is currently owned by someone else. An offer for the two lots is 6K. CCMD has owned the lots since 2005. Per Mrs. Hunter, she believes the lots should go for approx. 12-15k each. The board thinks we should counter back with request of 25K for both.
4. Water and Sewer Pickup repair Quote
New Truck would cost 30K. Our truck has a blown head gasket. To have a new engine & transmission installed by The Service Center will cost 14K and we will have a 3 yr. on the parts and labor warranty in writing. The vehicle just got new tires installed prior to the head gasket going out.
5. Budget Questions
Discussion of adding an increase for Tap Fees for future, also increasing base water & sewer fees by approx. \$5 each per month. Where did we come up with the \$5 number? Does this account for inflation in general for all supplies/wages, insurance & cost of operations?

Budget meeting @ 9am on Budget committee meeting is needed prior to the November 28th Public Notice meeting. Director Davis stated that he would be able to meet any morning from 9am to Noon.

Public Notice has been posted for the November 28th meeting.

Special Meeting needed ASAP, with all Board Members and Attorney to discuss 13k fine with process we need to follow to stay in compliance. Manager directed to get the Attorney and Engineering (NOCO) down to meeting in person with the board .

6. CCAAC Review (3 Items)

Three new items, all moving forward. Carport, fence, and garage.

7. READING BY CHAIRPERSON OF THE STATEMENT OF CONDUCT AND Demeanor.

Jessica Hoff water usage bill letter included.

Removal of debt or reduction would set a precedent for future cases. Could offer a revised payment plan but it must be adhered to with no violations. The Chairman suggest maybe the CCMD could create a donation account that could be used to assist clients with special circumstance on a case-by-case base.

8. CITIZENS INPUT

Bob Cook: Question to the board regarding the Directive from the Health Dept, June 2023. Enforcement order regarding getting the DAP system, if not commenced within 1 year must start over. Wanted to go line by line of the enforcement order. Mr. Cook also informed new members on the board of items that took place prior to their appointment. Stated that the board gave manager directive to go to Pueblo County for the money of pre-treatment. Her was informed by Director Davis that he has spoke for 6 minutes and Chairman Elliot informed him to summarize and wrap it up. At which time he stated the manager just needs to be fired.

Mr. Kim addressed the purchasing of Parcels #4724404008 & 47244044009. The lots are small, approx. .12 of an acre each, in the South Park area and have water/sewer in the street and are located off a paved road. He would like to build townhomes eventually; the parking areas are currently owned by a different owner. Mr. Kim provided five comps to the board for price comparison. He wants the board to know he lives in the valley and is not an outsider purchasing for investment only.

A Mr. Greg Coulter spoke up – that as an AA Operator and works with CRWA everything has changed in the water regulations in the past 10 years. He has worked as a consultant around the state. Violation/fines will give us a boost up on the grants but takes time. The AWWA membership will give us access to the Standard Operating manuals which will help us. He sees in future that the new equipment will help us to get to predictive maintenance scheduling.

Dennis Kahr asked if any updates on 1) post office – board stated contacted Senator Bobert's office three times & have forwarded to Postmaster General no response yet. Community could bombard Senator Bobert's office with requests to possible spur on action. 2) Status of the car repair shop on Colo. Blvd. CCAAC meets on Thurs. board member to check status with them.

COLORADO CITY METROPOLITAN DISTRICT



Niel Elliott, Chairman

ATTEST:



Clint Gross, Co-Chairman

Approved this 31st day of October 2023

These minutes are not verbatim to the meeting and should not be considered a complete record of all discussions during the meeting. For complete proceedings and statements, please refer to the video or audio recording of the meeting.



BOARD OF DIRECTORS REGULAR MEETING

A regular meeting of the Board of Directors of the Colorado City Metropolitan District will be held Tuesday October 31, 2023, beginning at 7:03 p.m.

1. CALL TO ORDER.
2. PLEDGE OF ALLEGIANCE.
3. MOMENT OF SILENT REFLECTION.
4. QUORUM CHECK

Chairperson Neil Elliot
Treasurer Sarah Hunter - no - excused
Secretary/Co-Chair, Clint Gross
Director Greg Collins - no excused
Director Ray Davis

Also in Attendance:

Jim Eccher, District Manager
Yvonne Barron, Finance Director
Sandi Oglesby, Reception/AR
Gary Golladay – Water/Sewer

5. APPROVAL OF THE AGENDA.

Mr. Gross motioned to approve the agenda. Mr. Davis second the motion. Voted called. All Board Members present approved.

6. APPROVAL OF MINUTES.

Study Session	Oct 10,2023
Regular Meeting	Oct 10,2023
CCACC Minutes	Oct 10,2023

Mr. Gross motioned to approve the minutes. Mr. Davis second the motion. Voted called. All Board Members present approved.

7. **BILLS PAYABLE.**

CCAAC budget: \$36,963

Trip pay back to Mrs. Barron: \$72

Some accounting issues with items that have gone over 45 days on credit card.

Gas bill has increased at Cold Springs already.

8. **FINANCIAL REPORT.**

End of August – delays due to getting data from field staff on last day of month. July & August where horrible to get information and close month. Training/Education continuing issue.

Working on September within next few days.

Purchase Orders over \$500 need to be given to Mr. Eccher & Mrs. Barron timely.

August audit team regarding water: 1.2M loss, 1.5M-ARPA adjustment to year end. Would put us 1.2 thousand in the black.

9. **OPERATIONAL REPORT.**

a. Beckwith Dam report – see full report on file.

October 11 – Lake at 13.4

October 23 – Lake at 13.6

b. Committee Reports Library Sign/ Greg Newsletter /Uniform Development Code/Post Office

Greg Newsletter is attached for November billing.

9. **ATTORNEYS REPORT: N/A**

Plan a Special meeting with Attorney regarding violation & fines.

11. **AGENDA ITEMS:**

Accept the Letter to OEDIT Grant

Discussion/Action

Mr. Davis motion to fully support Valley 1st, financially & in kind for grant for CPW.

Mr. Gross seconds the motion.

Chairman Elliot suggest changing letter: to financial & in kind. Changed to verbal acceptance, as letter not required.

Vote called. All board members present approved.

Land Sale Agreement #4724404008 and 4724404009 Discussion/Action

Mr. Davis motioned to postpone this action until the next meeting.
Mr. Gross seconds this motion.

Discussion that the board believes the offer is too low for said property. Mr. Kim (buyer) wanted the board to know he is a member of the community and lives in the valley.

Vote is called. All board members present approved postponing this action until next meeting.

Water and Sewer Truck repairs Quote Discussion/Action

Mr. Gross motions to pay upfront cost with a 3-year unlimited warranty in writing for parts & labor for engine/transmission replacement in truck, as it recently received new tires also.
Mr. Davis seconded the motion.

Chairman Elliot nervous about no additional quotes to compare repair costs.
Mr. Davis states he is highly satisfied with work completed by "The Service Center" and it keeps dollars local.

Chairman Elliot called for vote. Mr. Davis & Mr. Gross voted yes. Chairman Elliot voted no. Motion approved.

Jessica Hoff water bill issue Discussion/Action

Mr. Gross motion to not reduce Ms. Hoff water bill, but negotiate a new payment plan & have her sign.
Mr. Davis seconded the motion, to not forgive the bill, but a new modified payment plan.

Mr. Eccher recommends a different payment plan be put in place, suggests current monthly bill plus a minimum of \$100 additional. The payment plan must be adhered to with no violations, or water will be turned off and the bill will need to be paid in full.

Chairman Elliot called for vote. Chairman Elliot & Mr. Davis voted yes. Mr. Gross Elliot voted no. Motion approved.

CCACC: Discussion/Action

A. New Construction:

- | | |
|------------------------|---------|
| 1. 4721 St Vrain Drive | Fence |
| 2. 4540 East Jefferson | Carport |
| 3. 3916 West Colorado | Garage |

B. Actions

- a. 0 First Letters
- b. 0 Second letters
- c. 0 Third letters
- d. 0 Unauthorized Structure

Mr. Davis motion to approve all three actions (fence, carport & garage) together. Mr. Gross seconded the motion. Chairman Elliott called for vote. All board members present approved.

12. OLD BUSINESS. road resolution - On hold at this time, with all the water & tank issues.
November 15th tank 2. Tank 1 – portable tanks to supply to city. The tanks data/info will talk with each other.

Message to Tom Dae regarding wells: Rodeo, Summit that were struck by lightning (insurance claim).

Duell well has been scoped.

Rec well is being used to help currently. San Isabel changed out meter and was shut off at this time.

13. NEW BUSINESS:

Recommend Special Board Meeting ASAP with lawyer & NOCO in attendance to review budget items & fines.

14. CORRESPONDENCE.

Manager directed to Email lawyer asking what portion of this is each person (board/staff) liable for civil or criminal charges.

15. EXECUTIVE SESSION: N/A

16. ADJOURNMENT.

Mr. Gross motioned to adjourn the meeting. Mr. Davis second the motion. Voted called. All Board Members present approved. The meeting was adjourned at 7:50 p.m.

COLORADO CITY METROPOLITAN DISTRICT



Neil Elliott, Chairman

ATTEST:



Clint Gross, Co-Chairman

Approved this 31st day of October 2023

These minutes are not verbatim to the meeting and should not be considered a complete record of all discussions during the meeting. For complete proceedings and statements, please refer to the video or audio recording of the meeting.



Pueblo Board of County Commissioners

Epimenio Griego
Commissioner
District 1

Garrison M. Ortiz
Chairman
District 2

Chris Wiseman
Chair pro tem
District 3

Grant Committee:

I am writing to express my support for Valley First and the Colorado City Metro District as they apply for the Colorado Outdoor Recreation Grant.

Over the past two years, amid a global pandemic, the ways in which we live, work, and recreate have changed substantially. Even prior to Covid, rural communities have felt increasing turbulence and division within themselves, with disadvantaged and rural communities typically being two of the most widely impacted. The size of the impact is largely due to the availability of financial, structural, experiential, and human capital resources within these communities. The average household income for Colorado City is \$44,000, which is 30% less than the median annual income. Additionally, over 50% of the students of the community qualify for free/reduced lunch. The award of these grant dollars would have a life changing impact on the community now and into the future.

The Greenhorn Valley Park is the heart of the community and serves as a hub for recreation, sporting events and family gatherings for the residents of Colorado City and Rye. Yet, as an unincorporated community, the Metro District has struggled over the last 15 years to fully complete all of the resources within the park. This funding will help Valley First complete a multi-use sports field that was started over 15 years ago and was never completed.

This field can be used for a variety of athletic events and community events. It will also bring a great deal of tourism dollars to the valley. When the Metro District has hosted tournaments, concerts and community events, many come from surrounding communities and bring critical tourism dollars to the community, which benefits the larger community as a whole.

As you can see, this funding will provide multiple, long lasting benefits to the entire communities of Colorado City and Rye. As such, Valley First has the full support of my office as they apply for the Colorado Outdoor Recreation Grant to complete this outdoor community space that serves as a critical resource for the entire community.

Please let me know if you have any questions at all,

Epimenio "Eppie" Griego-Pueblo County Commissioner District 1



**OFFICE OF THE DISTRICT ATTORNEY
TENTH JUDICIAL DISTRICT, COLORADO
J.E. CHOSTNER
District Attorney**

June 15, 2021

Colorado Outdoor Recreation Industry Office (OREC)
1600 Broadway, Ste 2500
Denver, CO 80202

Dear OREC Grant Committee:

I am writing to support the efforts of Valley First to receive funding from the Colorado State Outdoor Recreation Grant. Valley First has been in Colorado City/Rye since December 2021 and has proven itself to be a positive and conscientious “neighbor” by partnering with the Colorado City Metropolitan District in providing community services to youth and adults.

Valley First is putting together plans for a multi-purpose Community Center to house the Community Health Department, Community Gym, and other activities/programs. The Colorado City Metropolitan District started a football/track and field approximately 15 years ago. In 2008, when the stock market crashed, the field was never completed and has been unused since. The completion of this field would greatly benefit Colorado City and Rye, as this is the only athletic field in the area. The venue would provide a wonderful football, soccer, track field and many other community events. Currently, 62 percent of the youth in the Colorado City/Rye area are on free and reduced lunches and are unable to afford to drive 50 miles or more round trip into Pueblo to participate in athletics.

I believe that providing activities for youth and families in the Colorado City/Rye community will add long-term value for community interaction. The completion of the field for the community will enhance short- and long-term economic development to the impoverished community.

I am optimistic that if this application is approved it will have a tremendously positive impact on the citizens of Colorado City and Rye communities. As one who deals with youth on a daily basis, I can emphatically state, this will be a great positive for the community.

Respectfully submitted,

J.E. Chostner
District Attorney



Pueblo County Sheriff's Office

Kirk M. Taylor Sheriff
J.R. Hall Undersheriff

Mark A. Mears
Bureau Chief
Emergency Services

David J. Lucero
Bureau Chief
Law Enforcement

Paul Toth
Bureau Chief
Detention

Misty Sprague
Executive Director, Valley First
valleyfirst@hotmail.com

RE: Colorado State Outdoor Recreation Grant

Dear Misty,

As your Pueblo County Sheriff since 2007 and a long-time resident of Rye, Colorado I want to thank you for organizing this approach to volunteerism. The entire community of Rye, Colorado City and surrounding living communities known as "The Valley" has needed a football field closer to the central activities of the community for a long time. We supported a library; we support an activity track and summertime fields of dreams it makes sense to me to support the football field that is missing.

The Valley Community believes strongly in outdoor recreation from hunting, fishing, hiking, sports of all kinds and now we would like to complete the project started years ago. As the sheriff of Pueblo County and a present Valley Resident count this as my letter of support for your valuable initiative. Even if I am not the sheriff at the time you are successful and I believe you will be, I am certain for a non-profit such as yourself we may be able to provide inmate labor in some sort of fashion depending on availability and need.

Good luck, if I can be of further assistance, please let me know.

In service,

A handwritten signature in black ink, appearing to read "K.M. Taylor", written in a cursive style.

Kirk M. Taylor
Sheriff



Cleave Simpson
State Senator
Senate District 35

200 E. Colfax Ave
Denver, CO 80203

Capitol: 303-866-4875
cleave.simpson.senate@state.co.us



COMMITTEES
Member of:

Agriculture & Natural Resources
Health and Human Services
Capital Development
State, Veterans, and
Military Affairs

COLORADO STATE SENATE

6/16/2022

Grant Committee:

Valley First, is a foundation made up of a small group of community members, that was created in 2021 to foster inclusive community participation by providing environmentally sound facilities and outdoor locations for arts, education, recreation, celebration, and locally based human services in Colorado City and Rye, Colorado. The foundation and its members are determined to improve the lives and safety of the youth in their community and providing a multi-use sports field is step one.

Colorado City/Rye has a population of only 2500 people, with more than 60% of the youth on free and reduced lunch. With no local field for soccer, football, and other recreational activities, these same children must rely on their parents to drive 60 miles round trip to play in a larger town, and many can't afford that. In a time when today's kids must overcome the obstacles brought on by the pandemic, inflation, and soaring gas prices, it's more important than ever to provide them with a safe place to play, cultivate relationships, and to just be kids.

Colorado City is unincorporated, so the community does not have the ability to leverage any local sales tax for such projects. Back in 2007, the Colorado City Metro District began a three-phase project to install and complete a multi-use field for the community, shortly after phase two was completed, the market collapsed, and the funds were essentially gone.

The unfinished project left behind an unusable space and a scar on the town, a reminder of harder times. Rural communities are often not prioritized because they are considered less impactful, but a child's hometown should not be the determining factor on their ability to have a successful future.

Valley First has my full support as they apply for the Colorado Outdoor Recreation Grant to further their mission and complete this outdoor space that is so critical to the vitality of the entire community.

Please let me know if you have any questions or would like to discuss further.

Respectfully,

Cleave Simpson

A handwritten signature in blue ink that reads "Cleave Simpson".

