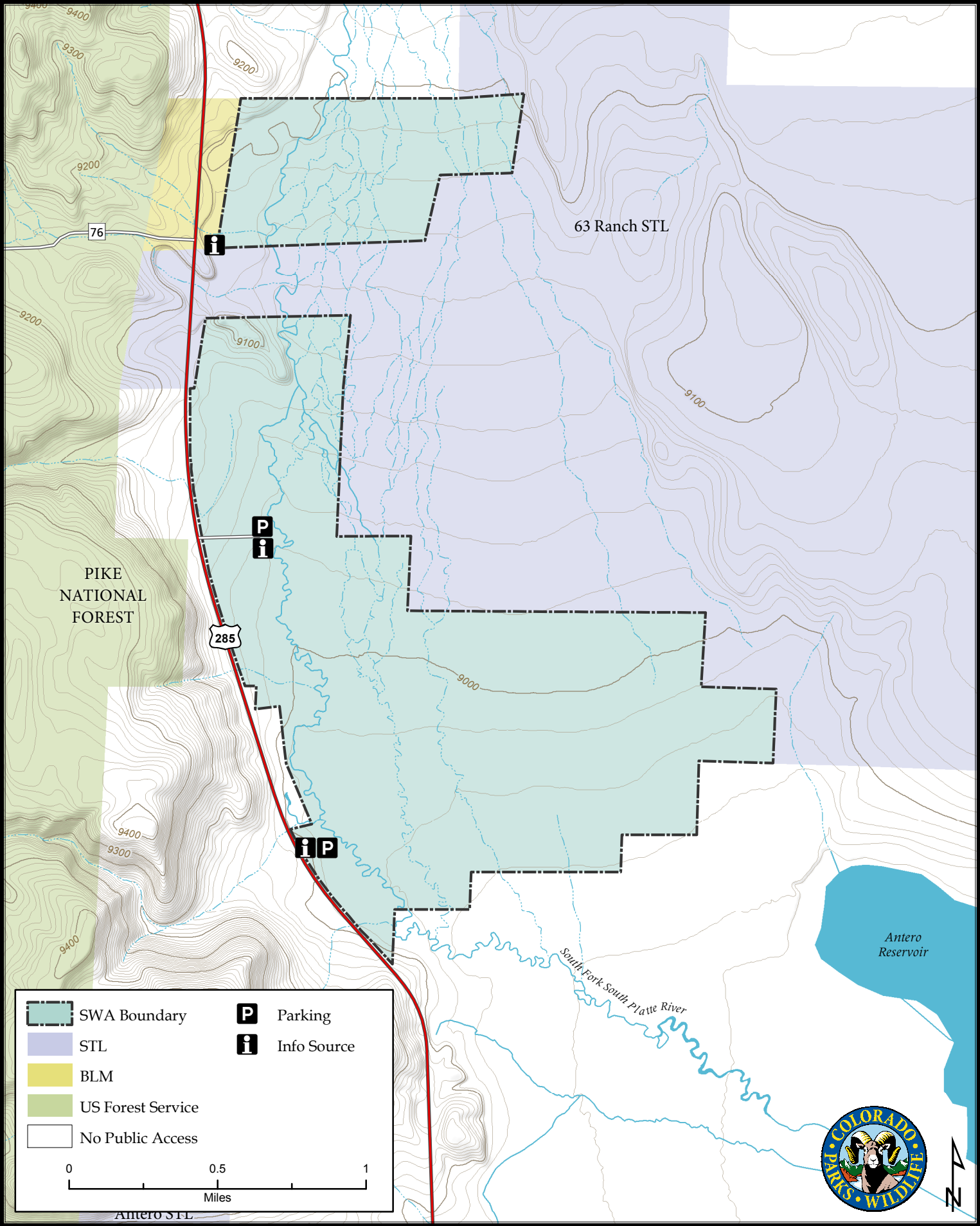
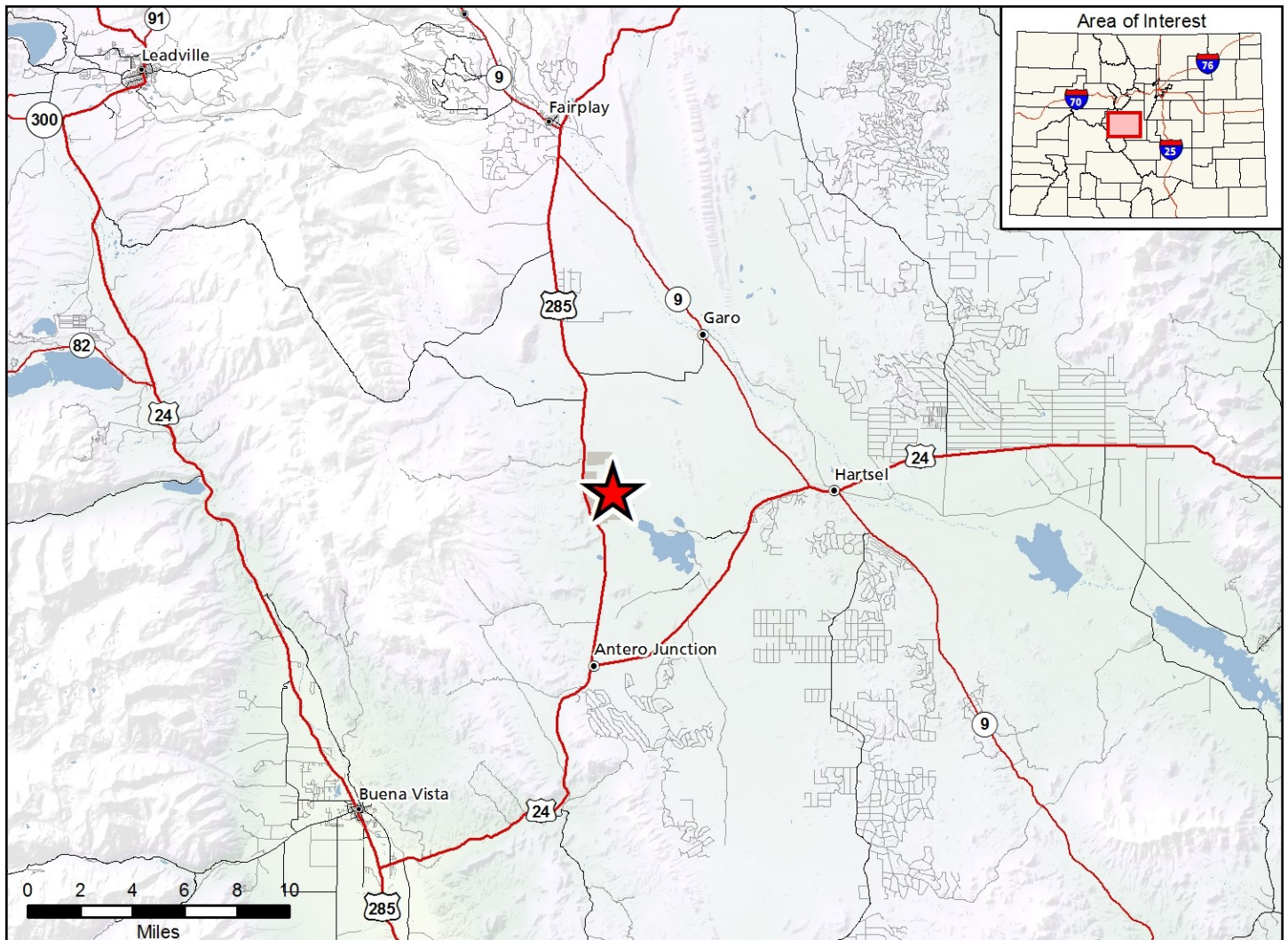


# 63 Ranch State Wildlife Area

Map Updated: 8/27/2019





### 63 Ranch SWA - Park County

From Fairplay, go 15 miles South on Hwy. 285 or 5.5 miles North of Antero Jct. on Hwy. 285.

#### Wildlife Area Offers:

Fishing: Coldwater Stream  
Hunting: Waterfowl, Big Game  
(GMU 50)  
Recreation: Wildlife Viewing

#### Regulations:

In addition to or in place of those restrictions listed in regulation #900 the below listed provisions or restrictions apply (see Ch. 9, <http://cpw.state.co.us/aboutus/Pages/Regulations.aspx>).

**Property governed by general provisions contained in regulation #900. No property specific regulations.**

#### More Information:

CPW NE Regional Office (Denver): (303) 291- 7227

Website: <https://cpw.state.co.us/>