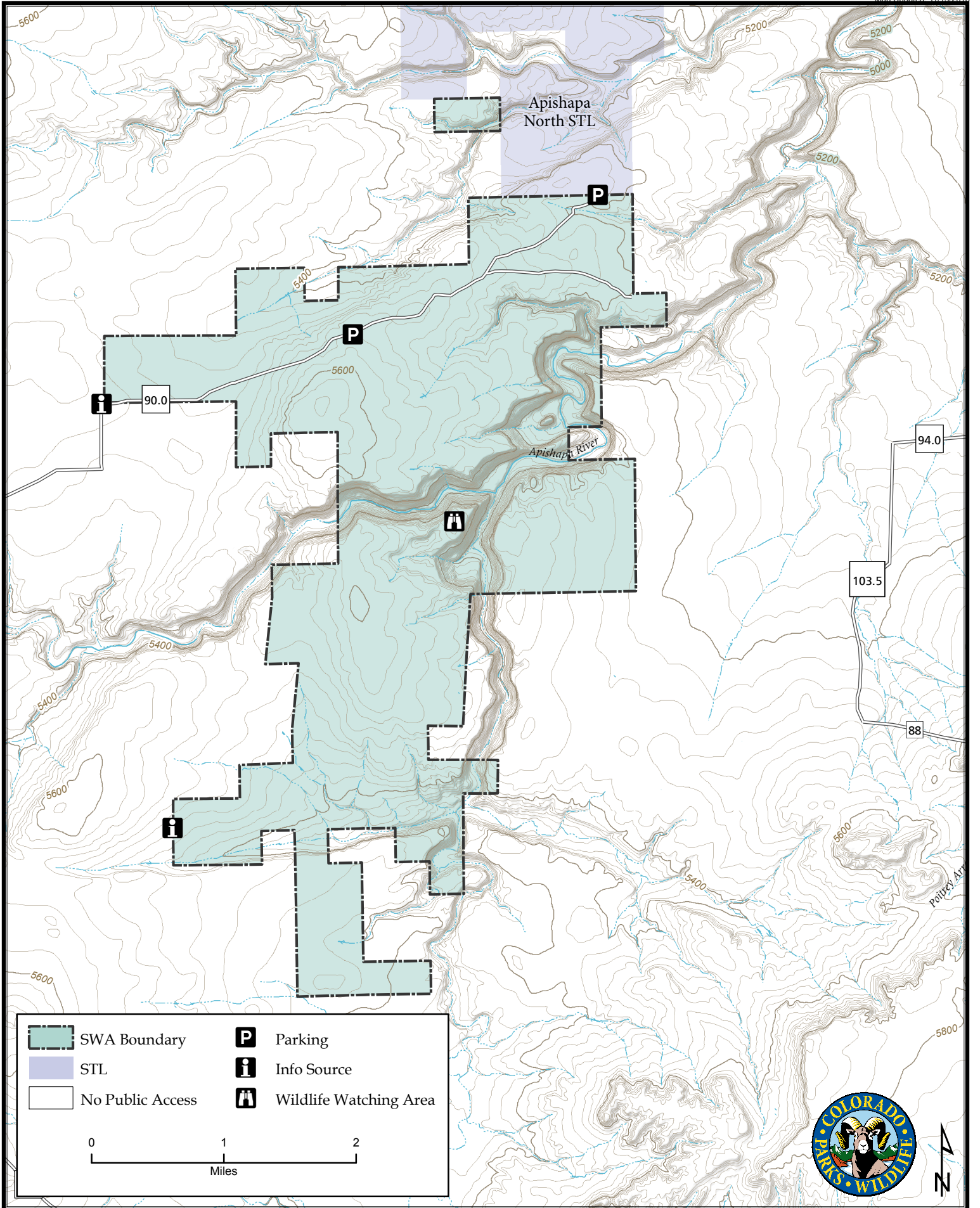
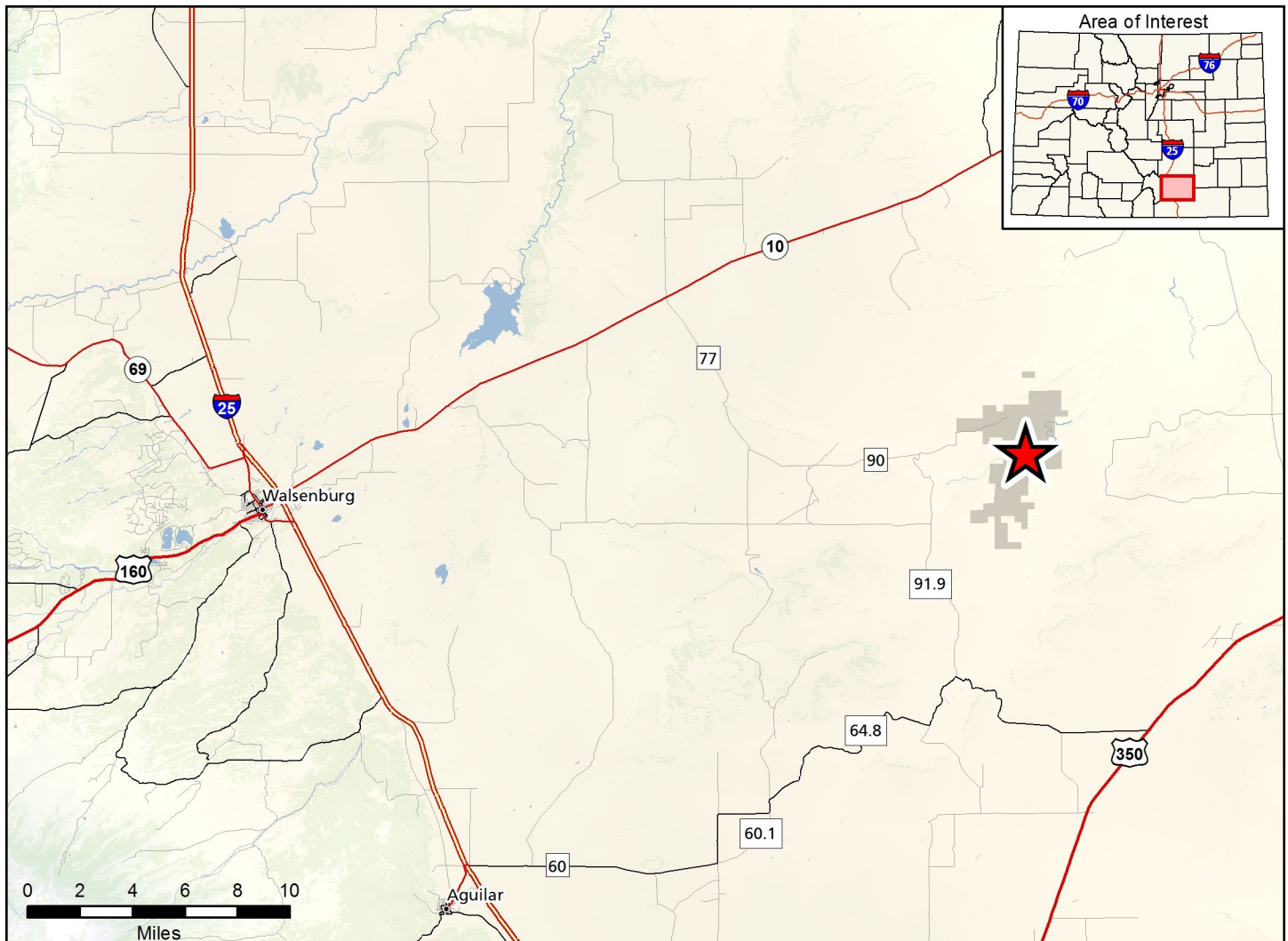


Apishapa State Wildlife Area

Map Updated: 11/15/2016





Apishapa SWA - Las Animas County

From Walsenburg, go 18.5 miles east on Highway 10 to County Road 77, then 7 miles south to County Road 90, then 11 miles east to the property.

Wildlife Area Offers:

Hunting: Deer, Antelope, Bighorn Sheep, Rabbit,
(GMU Scaled Quail, Dove
133/134)

Recreation: Hiking, Wildlife Viewing

Regulations:

In addition to or in place of those restrictions listed in regulation #900 the below listed provisions or restrictions apply (see Ch. 9, <http://cpw.state.co.us/aboutus/Pages/Regulations.aspx>).

- A. Public access is prohibited from June 1 through August 15.
- B. Camping is allowed in designated parking areas by licensed hunters during an established big game, spring turkey, and fall turkey season plus three (3) days before and three (3) days after each season.

More Information:

CPW Office (Pueblo): (719) 561-5300

CPW Website: <https://cpw.state.co.us/>