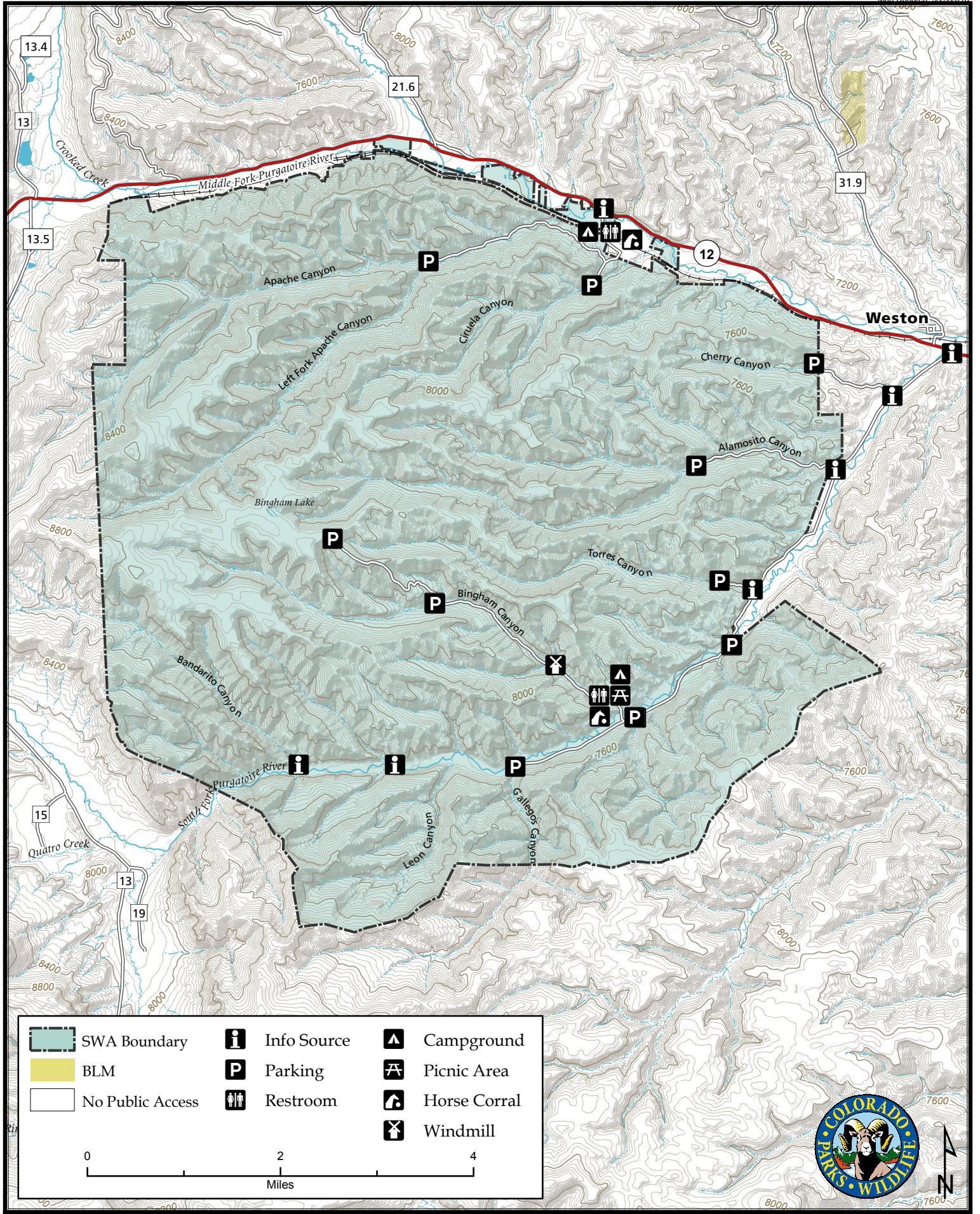


Bosque del Oso State Wildlife Area

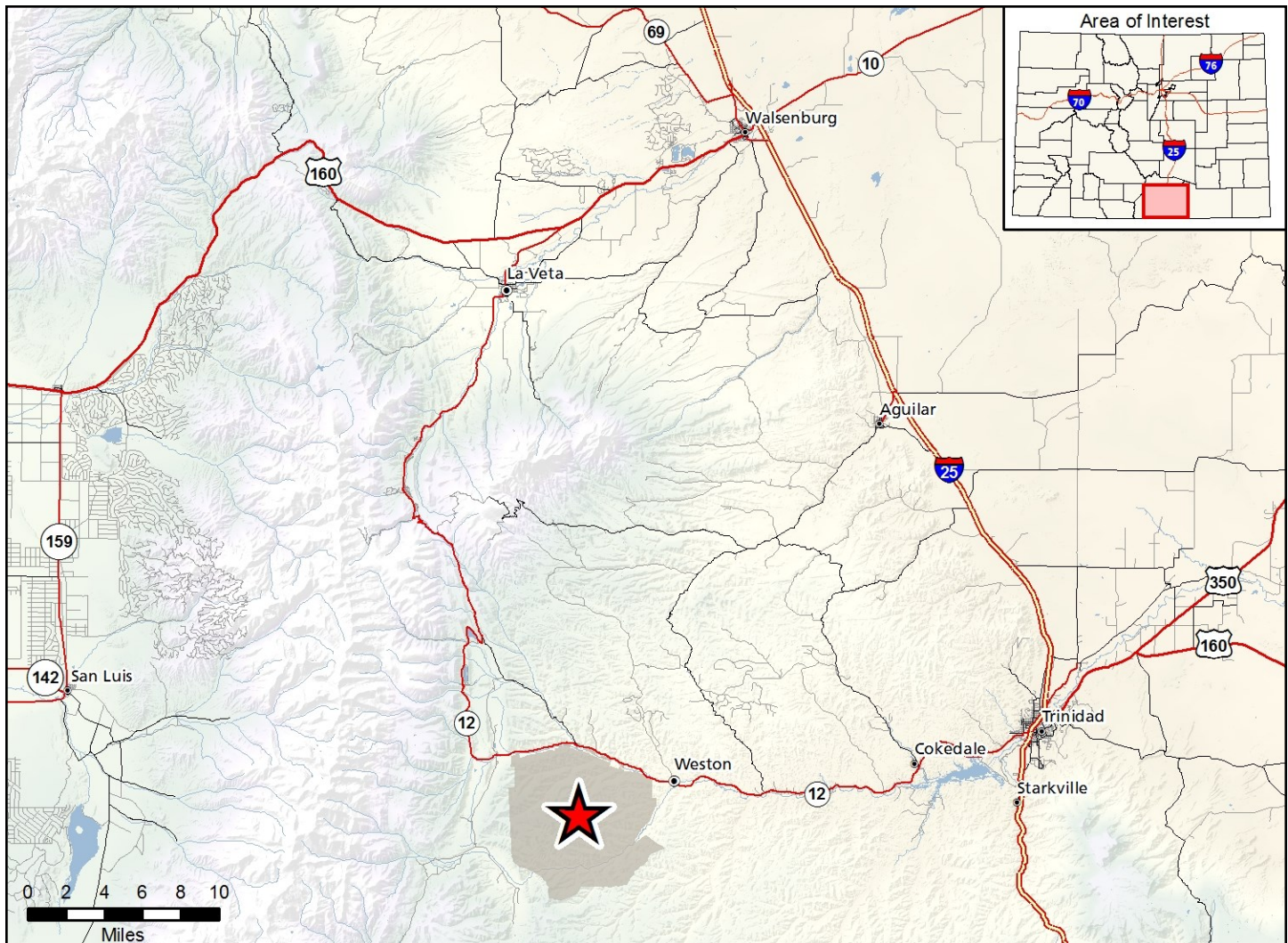
Map Updated: 9/25/2018



SWA Boundary	Info Source	Campground
BLM	Parking	Picnic Area
No Public Access	Restroom	Horse Corral
	Windmill	

0 2 4
Miles





Bosque Del Oso SWA - Las Animas County

From Trinidad, go 20 miles west on Highway 12 to Weston. Just before you enter town, look for the CPW signs on the south (left) side of the highway. Turn south on the access road that leads to six parking areas, including the Oso Malo (Bad Bear) camping area.

Wildlife Area Offers:

- Hunting: Deer, Elk, Bear, Turkey, Small Game, Mountain Lion
- Fishing: Coldwater stream

Regulations:

In addition to or in place of those restrictions listed in regulation #900 the below listed provisions or restrictions apply (see Ch. 9, <http://cpw.state.co.us/aboutus/Pages/Regulations.aspx>).

- A. Public access is prohibited from December 1 through April 30, except for properly licensed big game and spring turkey hunters and one non-hunting companion.
- B. Fishing is prohibited on the South Fork of the Purgatoire River within the boundaries of the Bosque del Oso State Wildlife Area from the first day after the Labor Day holiday weekend to the first day of the Memorial Day holiday.
- C. Parking and access is allowed from designated parking areas only.

- D. Discharge of firearms or bows is prohibited, except while hunting or bowfishing.
- E. Camping is allowed by licensed hunters during an established big game, spring turkey, and fall turkey season plus three (3) days before and three (3) days after each season.
- F. Fires are allowed within a containment structure in designated camping areas.
- G. Leaving any unattended food or trash is prohibited unless it is being stored in a bear resistant manner or container.

More Information:

CPW Office (Pueblo): (719) 561-5300

CPW Website: <http://cpw.state.co.us/>