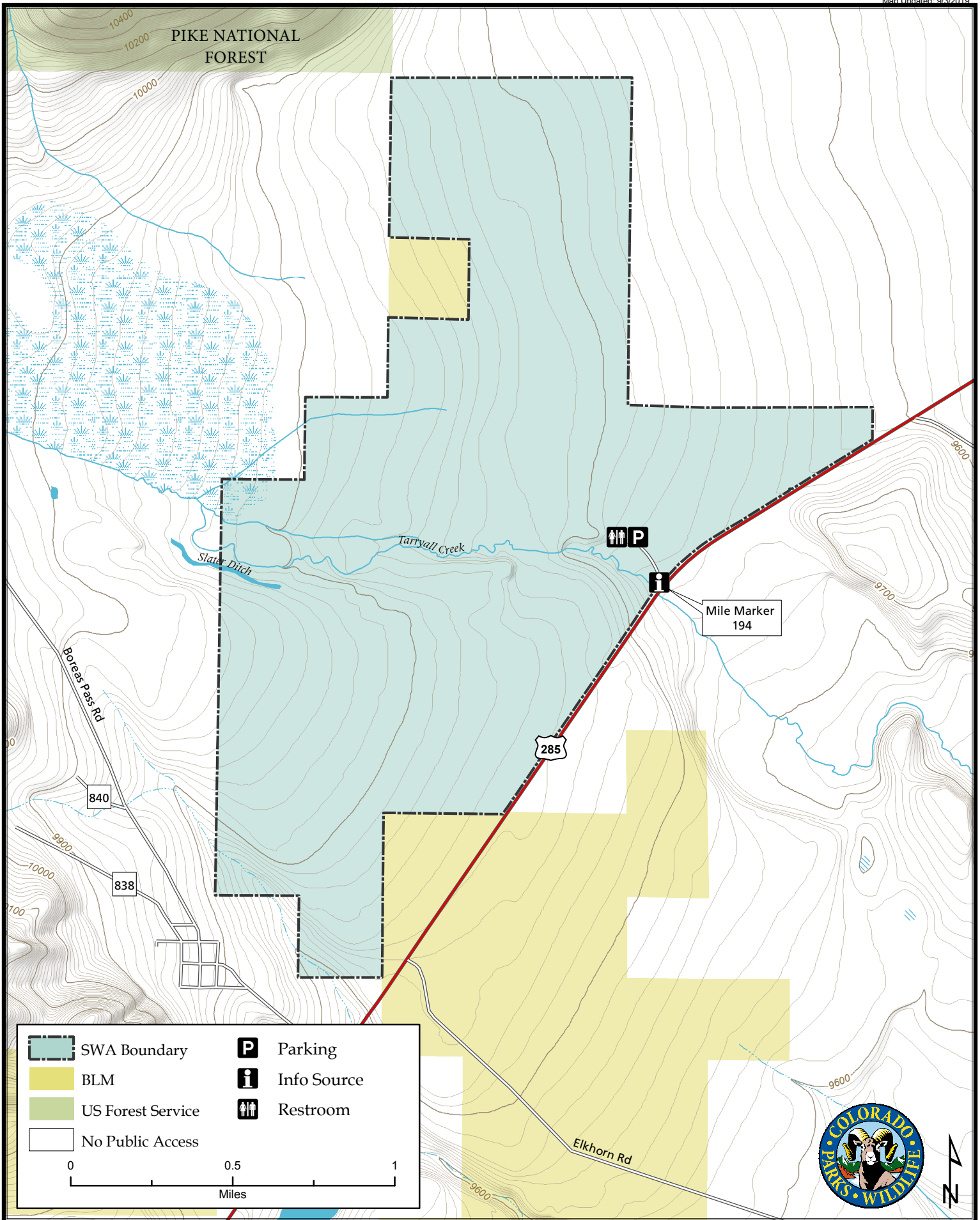
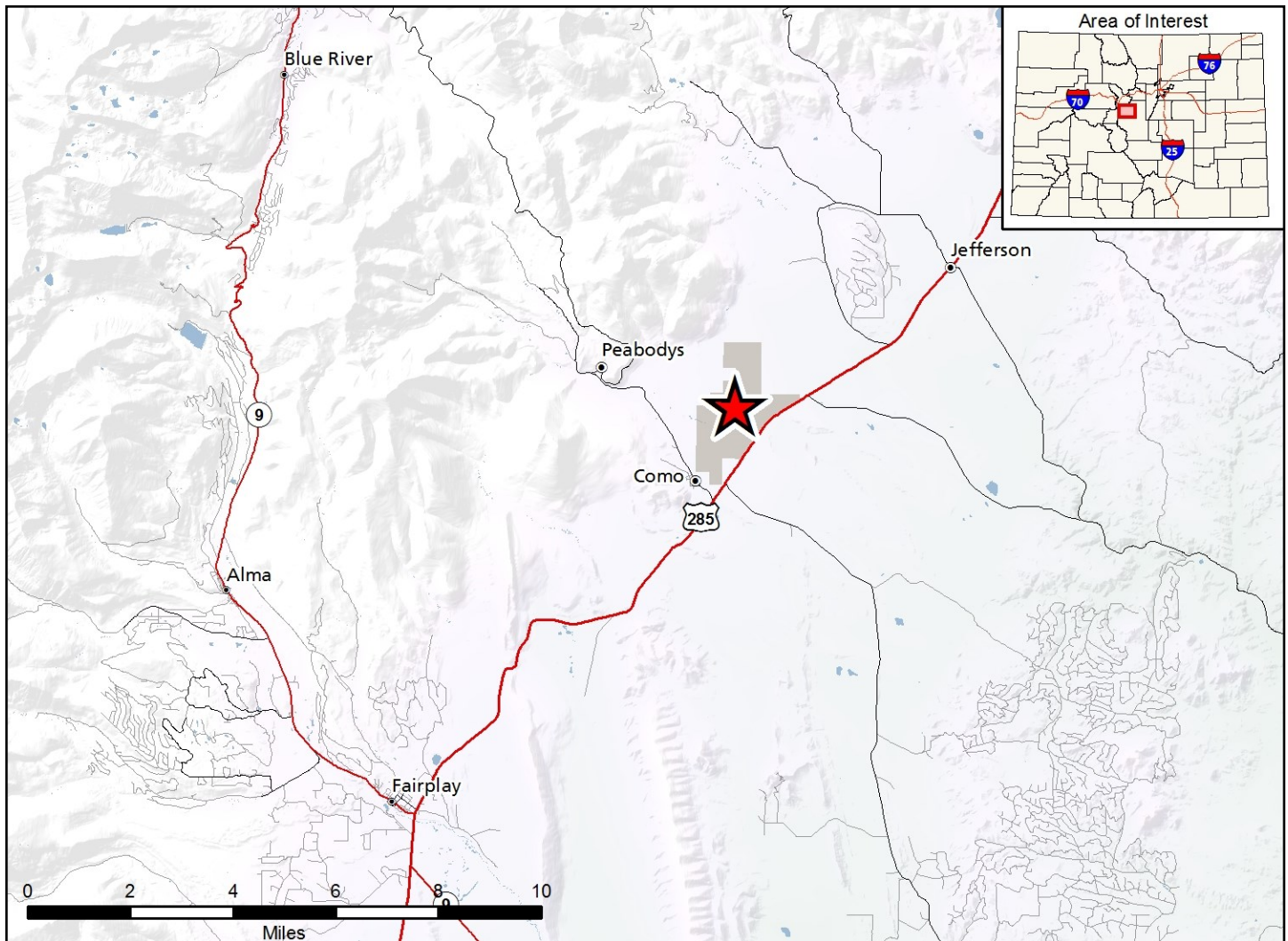


Cline Ranch State Wildlife Area

Map Updated: 9/3/2019





Cline Ranch SWA - Park County

From the town of Jefferson, go south on US 285 for 5 miles.

Wildlife Area Offers:

Fishing: Coldwater Stream
 Hunting: Waterfowl, Big Game, Small Game
 Recreation: Wildlife Viewing

Regulations:

In addition to or in place of those restrictions listed in regulation #900 the below listed provisions or restrictions apply (see Ch. 9, <http://cpw.state.co.us/aboutus/Pages/Regulations.aspx>).

- A. Public access is allowed in designated parking area only.
- B. Overnight parking is prohibited
- C. Fishing access is restricted to designated fishing areas (beats) only. Access to each fishing beat is restricted to occupants of the vehicle parked in the parking stall assigned to that beat (determined by corresponding number). No more than four anglers are allowed per vehicle, and only one vehicle is allowed per stall.

- D. Fishing is prohibited from October 1 through the end of February.
- E. Hunting access is limited to occupants of vehicles parked in designated parking stalls with a maximum of four hunters per vehicle.
- F. Discharge of firearms or bows is prohibited, except while hunting.
- G. Dog training and field trials are prohibited.

More Information:

CPW NE Regional Office (Denver): (303) 291- 7227
 Website: <https://cpw.state.co.us/>