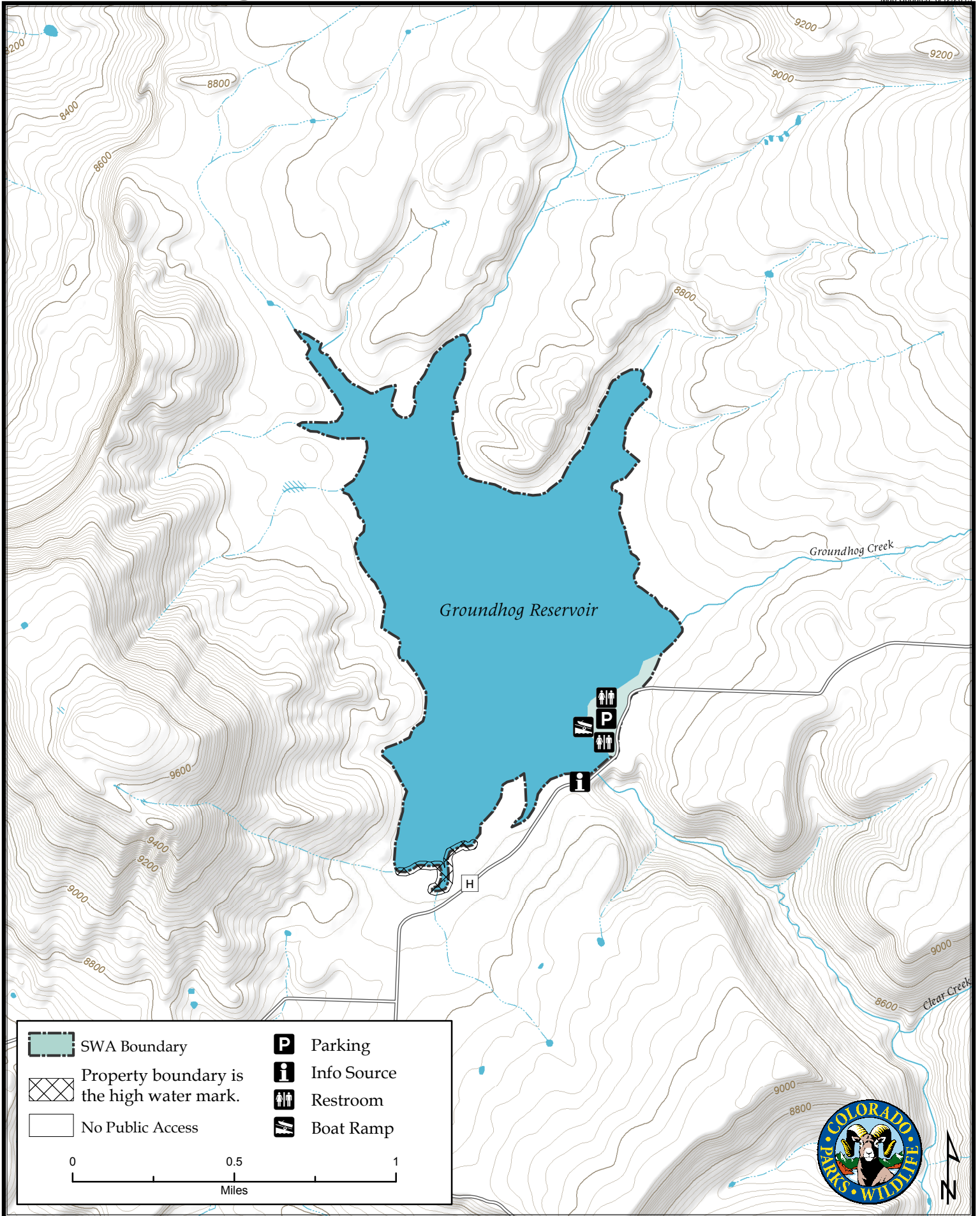




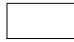


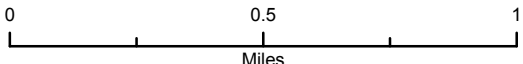


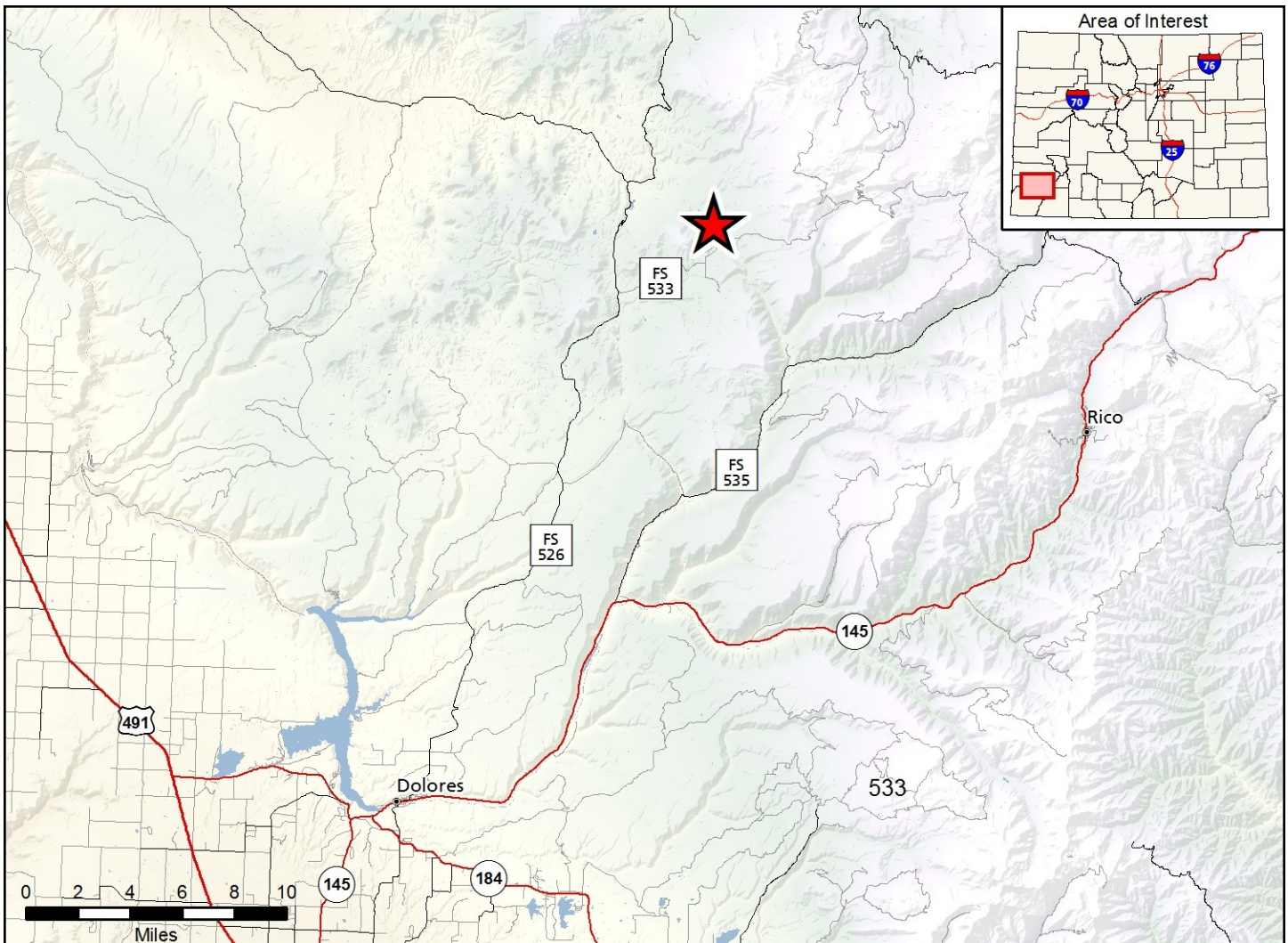
Groundhog Reservoir State Wildlife Area

Map Updated: 6/12/2019



- | | |
|--|---|
|  SWA Boundary |  Parking |
|  Property boundary is the high water mark. |  Info Source |
|  No Public Access |  Restroom |
| |  Boat Ramp |





Groundhog Reservoir SWA - Dolores County

From Dolores, go 25 miles north on Forest Service Road 526 to Forest Service Road 533 and then 5 miles east (right) to the reservoir.

Wildlife Area Offers:

Fishing: Coldwater lake

Recreation: Wildlife Viewing

Regulations:

In addition to or in place of those restrictions listed in regulation #900 the below listed provisions or restrictions apply (see Ch. 9, <http://cpw.state.co.us/aboutus/Pages/Regulations.aspx>).

- A. Launching and use of vessels may be allowed as posted. Contact the Durango CPW office for current information. When allowed, trailered vessels must be launched from CPW boat ramp. When allowed, operating a vessel in a manner that creates a whitewater wake is prohibited.

- B. Snowmobiles are allowed only as an aid in ice fishing.
- C. Dogs are allowed but must be kept under control on a physical leash by the handler at all times, except as authorized in #900(C)(15).
- D. Public access to Groundhog Reservoir State Wildlife Area is exempt from requirements set forth in section #900(C)1 of these regulations.

More Information:

CPW Office (Durango): (970) 247-0855

CPW Website: <http://cpw.state.co.us/>