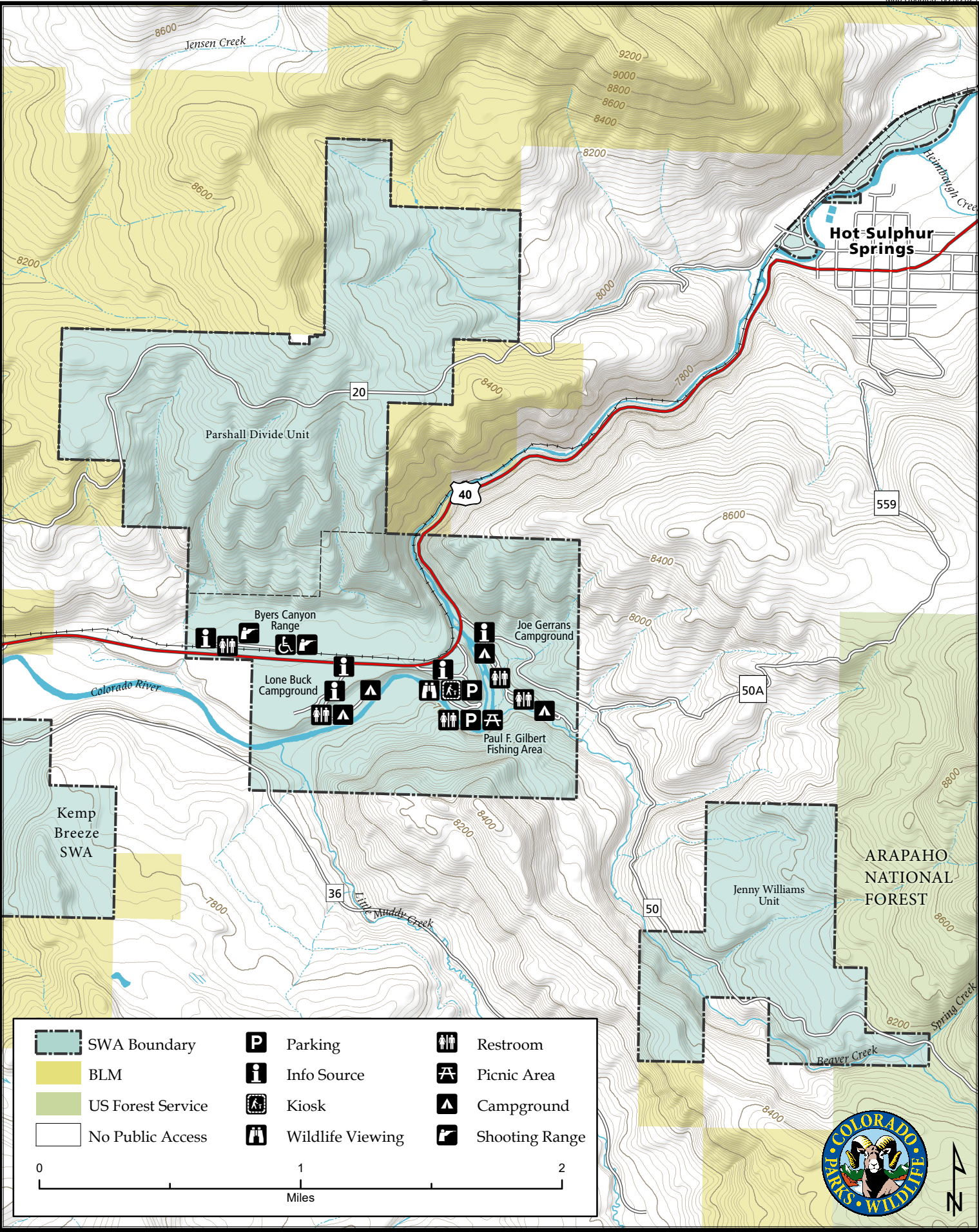
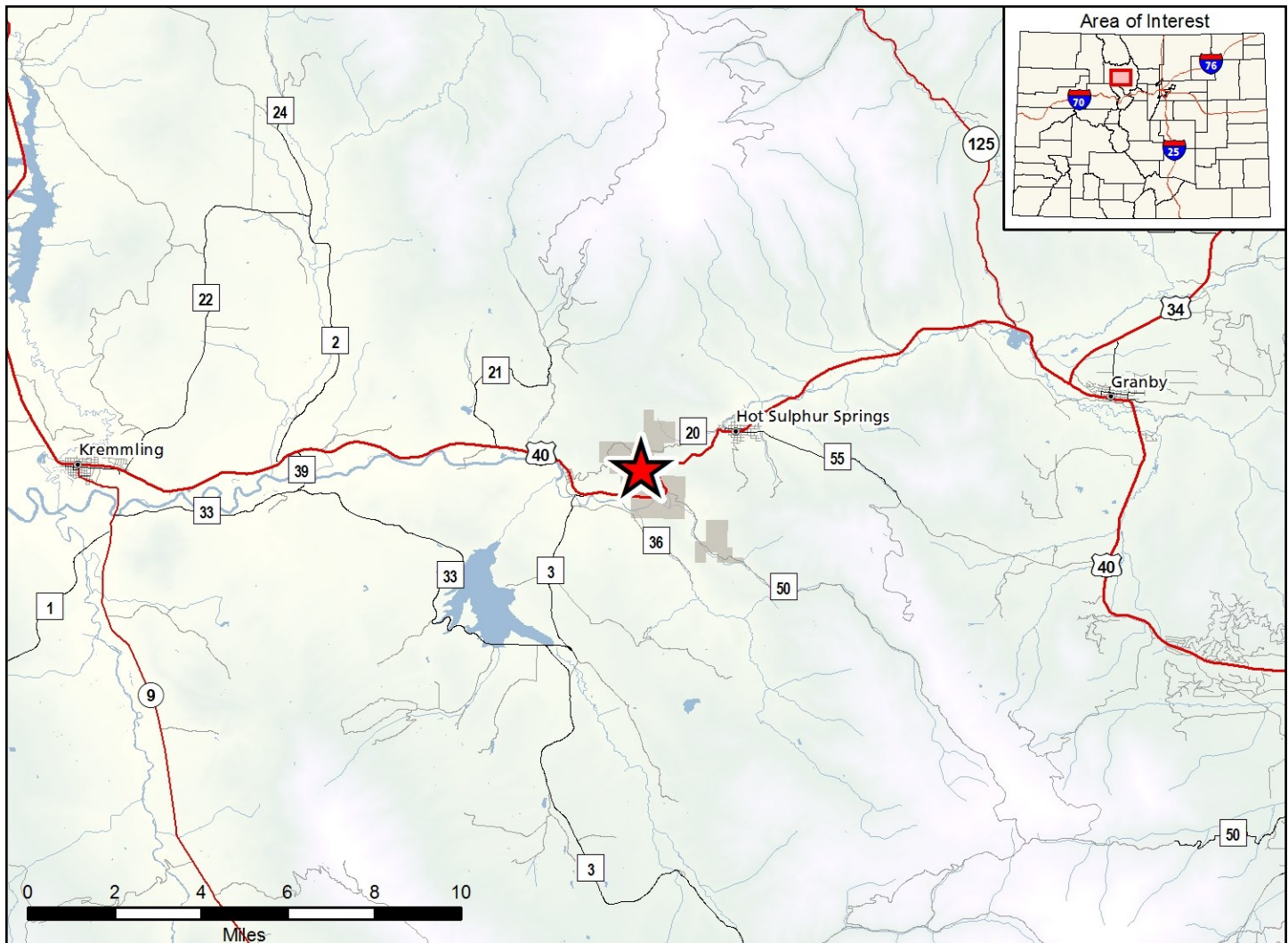


Hot Sulphur Springs State Wildlife Area

Map Updated: 8/23/2021





Hot Sulphur Springs SWA - Grand County

Jenny Williams Unit: From Hot Sulphur Springs, go 3 miles west on Hwy 40 to CR 50 (east end of Colorado River bridge); then 2 miles south; **Byers Canyon Rifle Range:** From Hot Sulphur Springs, go 4 miles west on Hwy 40 to range (north of highway); **Joe Gerrans Unit:** From Hot Sulphur Springs, go 3 miles west on Hwy 40 to Colorado River bridge; then south at east end of bridge; **Hot Sulphur Springs State Ranch:** From Hot Sulphur Springs, go 3 miles west on Hwy 40 to Colorado River bridge; then south at west end of bridge; **Paul F. Gilbert Fishing Area:** From Hot Sulphur Springs, go 3 miles West on Hwy 40 to west end of Colorado River bridge;

Wildlife Area Offers:

Hunting: Deer, Elk, Black Bear, Mountain Lion, Rabbit, Dusky Grouse, Waterfowl, Dove
Fishing: Coldwater Stream
Recreation: Camping, Hiking, Wildlife Viewing, Shooting Range

Regulations:

In addition to or in place of those restrictions listed in regulation #900 the below listed provisions or restrictions apply (see Ch. 9, <http://cpw.state.co.us/aboutus/Pages/Regulations.aspx>).

- A. Public access is prohibited on the Byers Canyon Rifle Range, except between sunrise and sunset.
- B. Public access on the Byers Canyon Rifle Range is prohibited from January 1 through April 30.

- C. Discharge of firearms or bows is prohibited, except while hunting or on the designated shooting range.
- D. Camping is allowed in designated campgrounds, in designated sites from May 15 through December 15.
- E. Fires are allowed within an established containment structure in designated areas.
- F. Dogs are allowed but must be kept under control on a physical leash by the handler at all times except as authorized in #900(C)(15).

More Information:

CPW Office (Sulphur Springs): (970) 725 - 6200
 CPW Website: <http://cpw.state.co.us/>