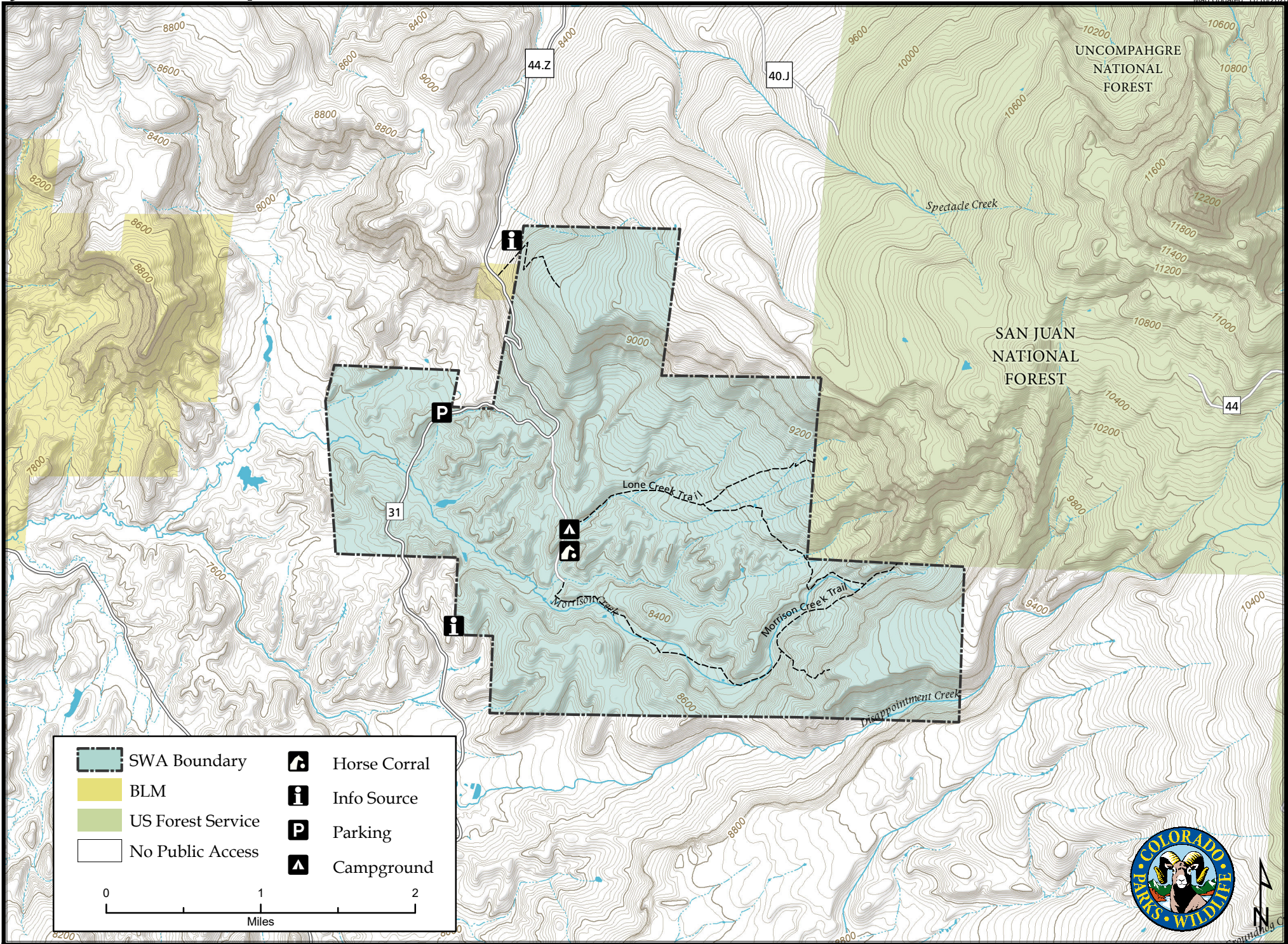










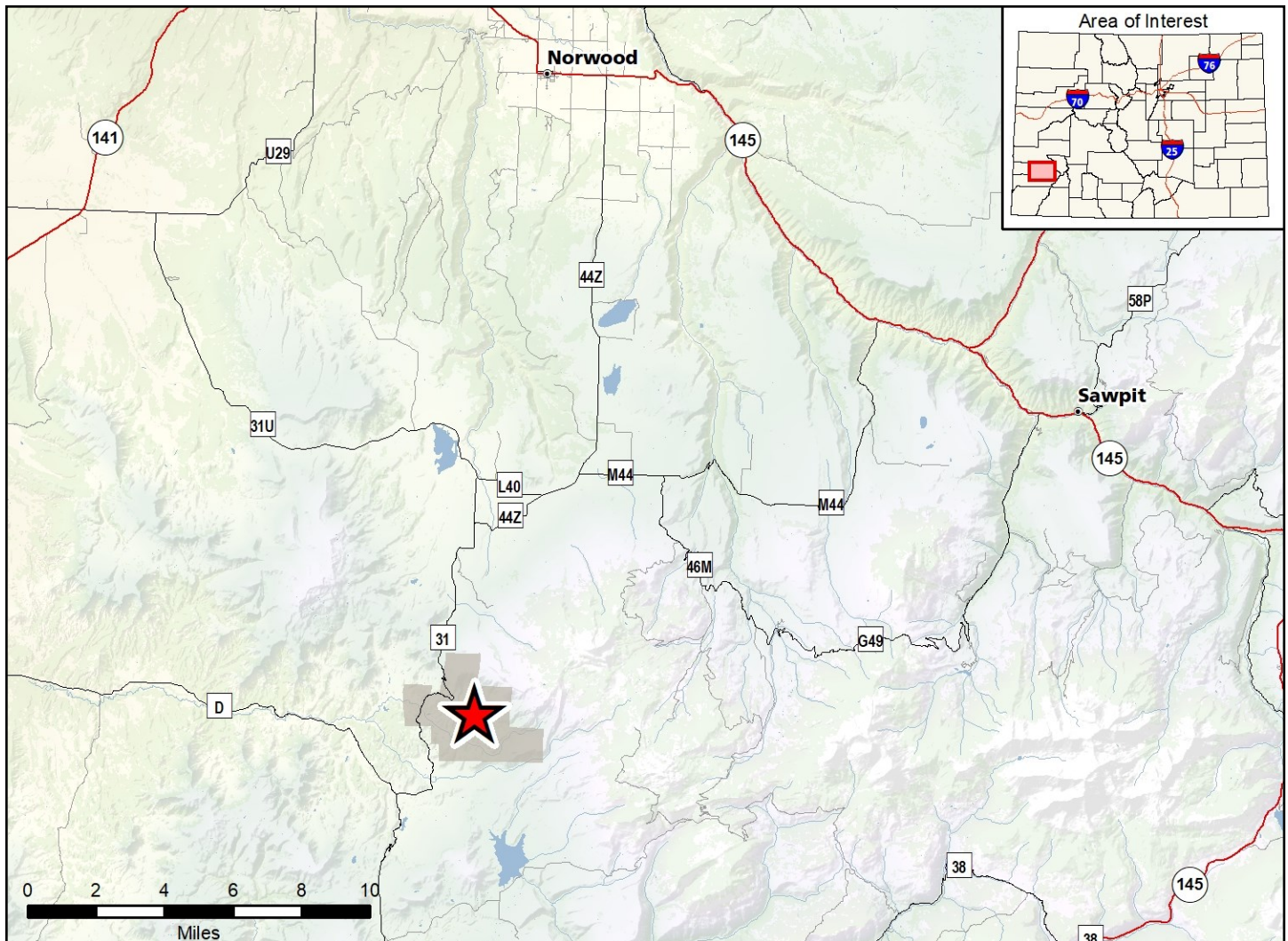
Jim Olterman / Lone Cone State Wildlife Area

Map Updated: 11/16/2020



- | | |
|---|--|
|  SWA Boundary |  Horse Corral |
|  BLM |  Info Source |
|  US Forest Service |  Parking |
|  No Public Access |  Campground |





Jim Olterman/Lone Cone SWA - Dolores County

From Norwood, go 1 1/2 miles east to Forest Road 610 (CR 44Z / Dolores-Norwood Road), then travel 22 miles south and west (right) following the primary road at all turns. Just past a high meadow with a radio tower, the road drops quickly and switches back to the west. The access road to the property is on the south (left) side of the switchback. There is a red metal gate at the entrance. Turn south (left) and follow the road down the hill to the parking area.

Wildlife Area Offers:

- Hunting: Deer, Elk, black bear, dusky (blue) grouse (GMU 70, 71)
 Fishing: Coldwater stream
 Recreation: Wildlife viewing, camping, picnicking

Regulations:

In addition to those restrictions listed in regulation #900 the below listed provisions or restrictions apply (see Chapter 9, <http://cpw.state.co.us/aboutus/Pages/Regulations.aspx>).

- A. Snowmobile use is prohibited.
- B. Camping is allowed in designated areas by licensed hunters during an established big game season or spring turkey season plus (3) days before and (3) days after each season.

More Information:

CPW Office (Montrose): (970) 252 - 6000
 CPW Website: <http://cpw.state.co.us>