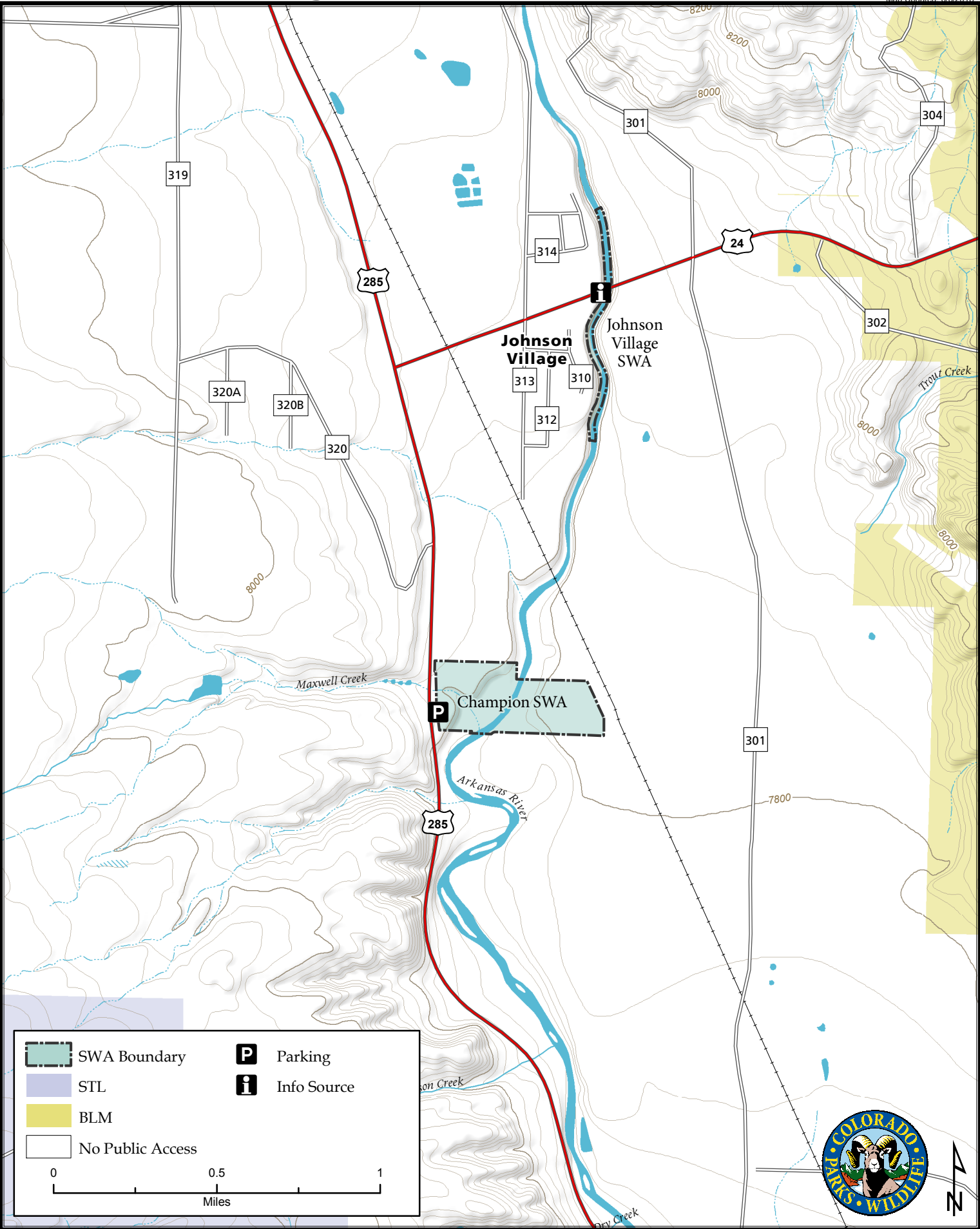
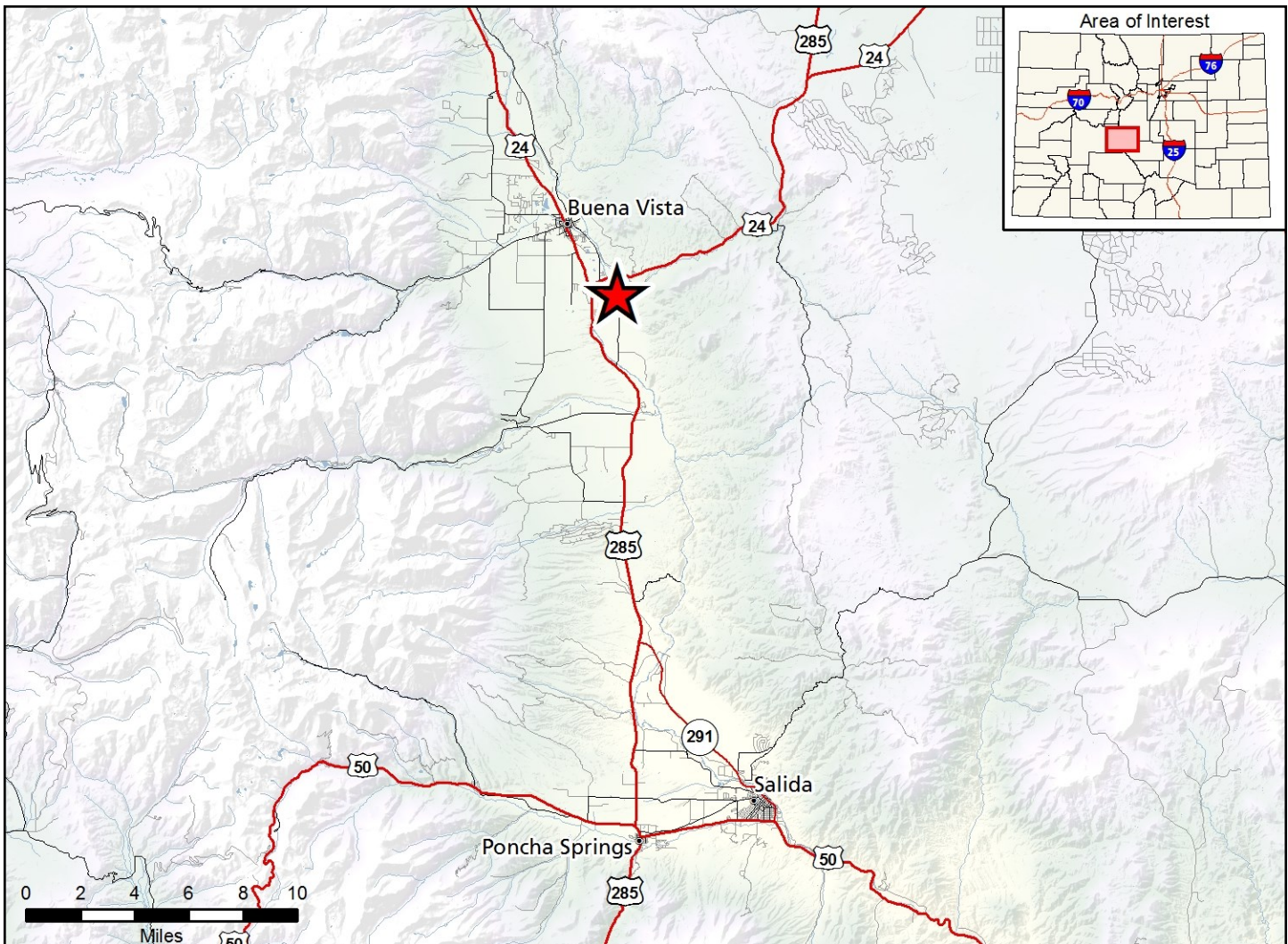


Johnson Village & Champion State Wildlife

Map Updated: 6/6/2016





Johnson Village SWA & Champion SWA - Chaffee County

Johnson Village SWA - From Highway 24 bridge over the Arkansas River, west half of river .25 mile upstream and .5 mile downstream. Fishing access only.

Champion SWA - From the junction of US 285 and 24, go 3/4 mile south to the fenced parking area on the east side of US 285. A trail from the parking area leads down to the river.

Wildlife Areas Offer:

Fishing: Coldwater Stream

Regulations:

In addition to those restrictions listed in regulation #900 the below listed provisions or restrictions apply (see Chapter 9, <http://cpw.state.co.us/aboutus/Pages/Regulations.aspx>).

Johnson Village SWA

This Division property has no specific regulations. **General provisions contained in regulation #900 apply.**

Champion SWA

- A. Public access is prohibited, except while fishing.
- B. Parking and access is allowed from designated parking areas only.

More Information:

CPW Office (Salida): (719) 530 - 5520

CPW Website: <http://cpw.state.co.us>