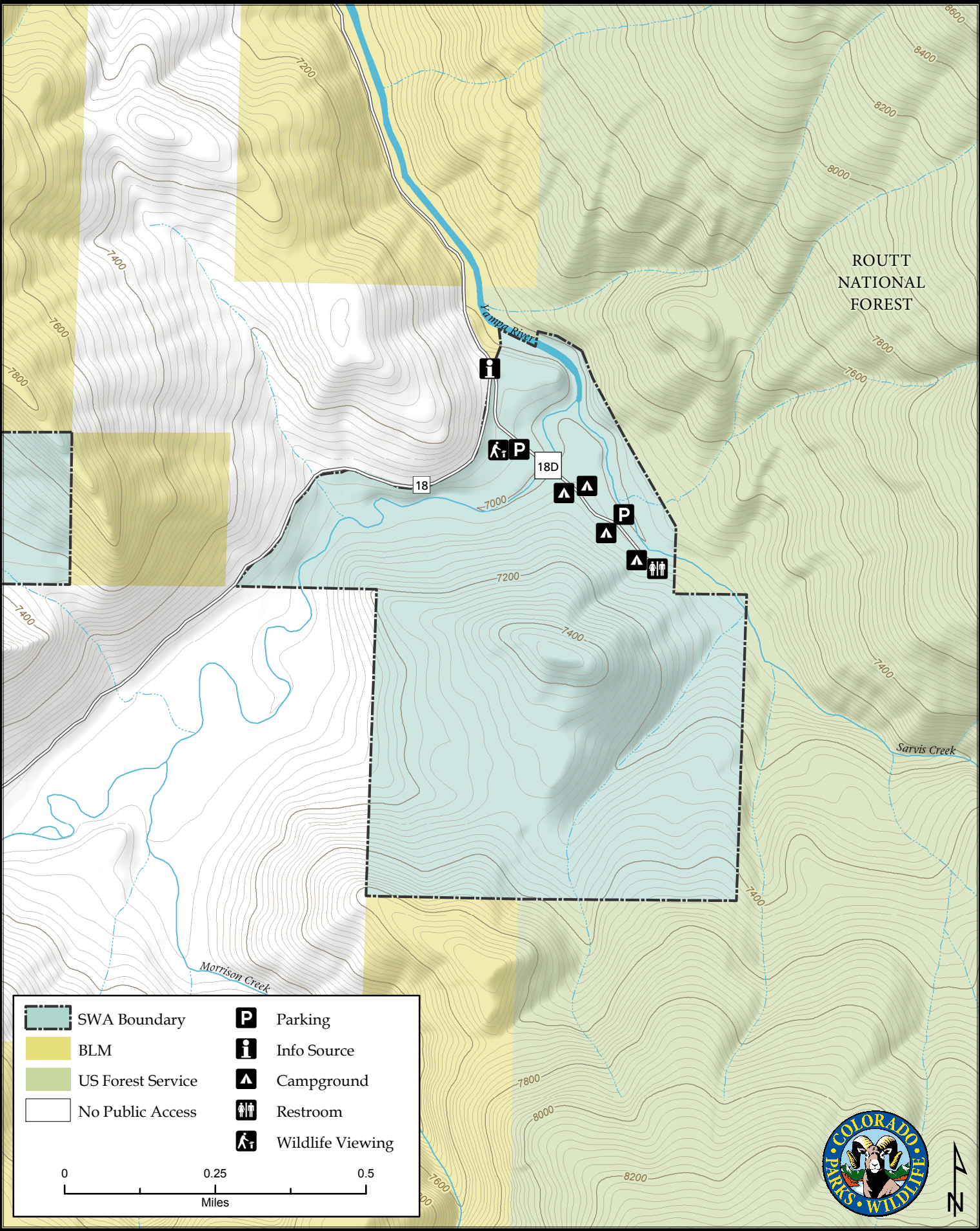
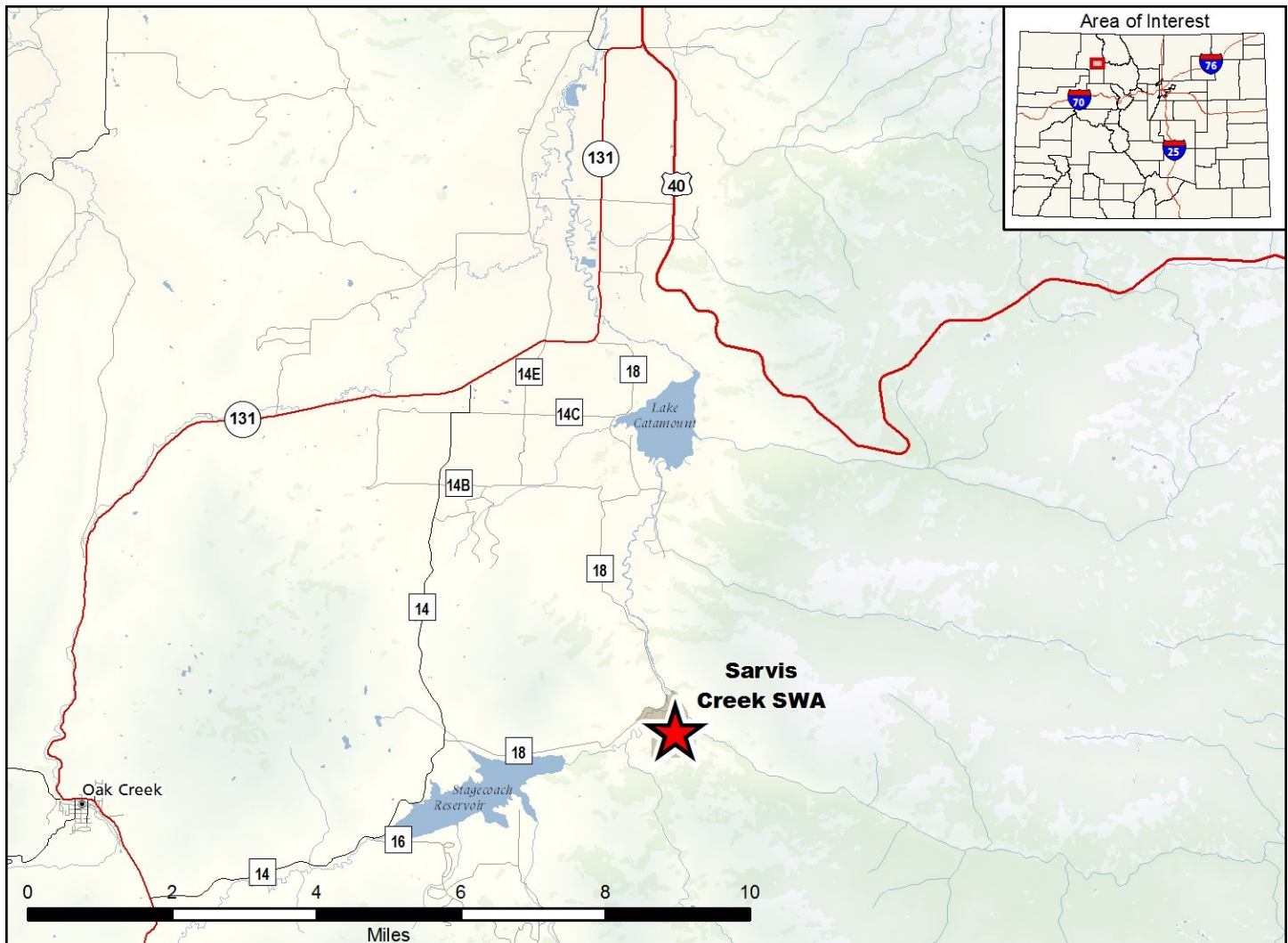


Sarvis Creek State Wildlife Area

Map Updated: 8/14/2015





Sarvis Creek SWA – Routt County

From Steamboat Springs, go 3 miles south on U.S. Highway 40 to Highway 131, then 3 1/2 miles west and south to County Road 18, and then 7 miles south (left) to the property.

Wildlife Area Offers:

Fishing: Coldwater Stream
 Hunting: Deer, Elk, Black Bear, Dusky (Blue) Grouse, Waterfowl
 Recreation: Hiking, Wildlife Viewing

Regulations:

In addition to or in place of those restrictions listed in regulation #900 the below listed provisions or restrictions apply (see Ch. 9, <http://cpw.state.co.us/aboutus/Pages/Regulations.aspx>).

- A. Discharge of firearms or bows is prohibited, except while hunting.
- B. Camping is allowed by licensed hunters during an established big game season plus three (3) days before and three (3) days after each season.
- C. Fires are allowed within a containment structure while camping.

More Information:

CPW Office (Steamboat): (970) 870-3333

CPW Website: <http://cpw.state.co.us/>