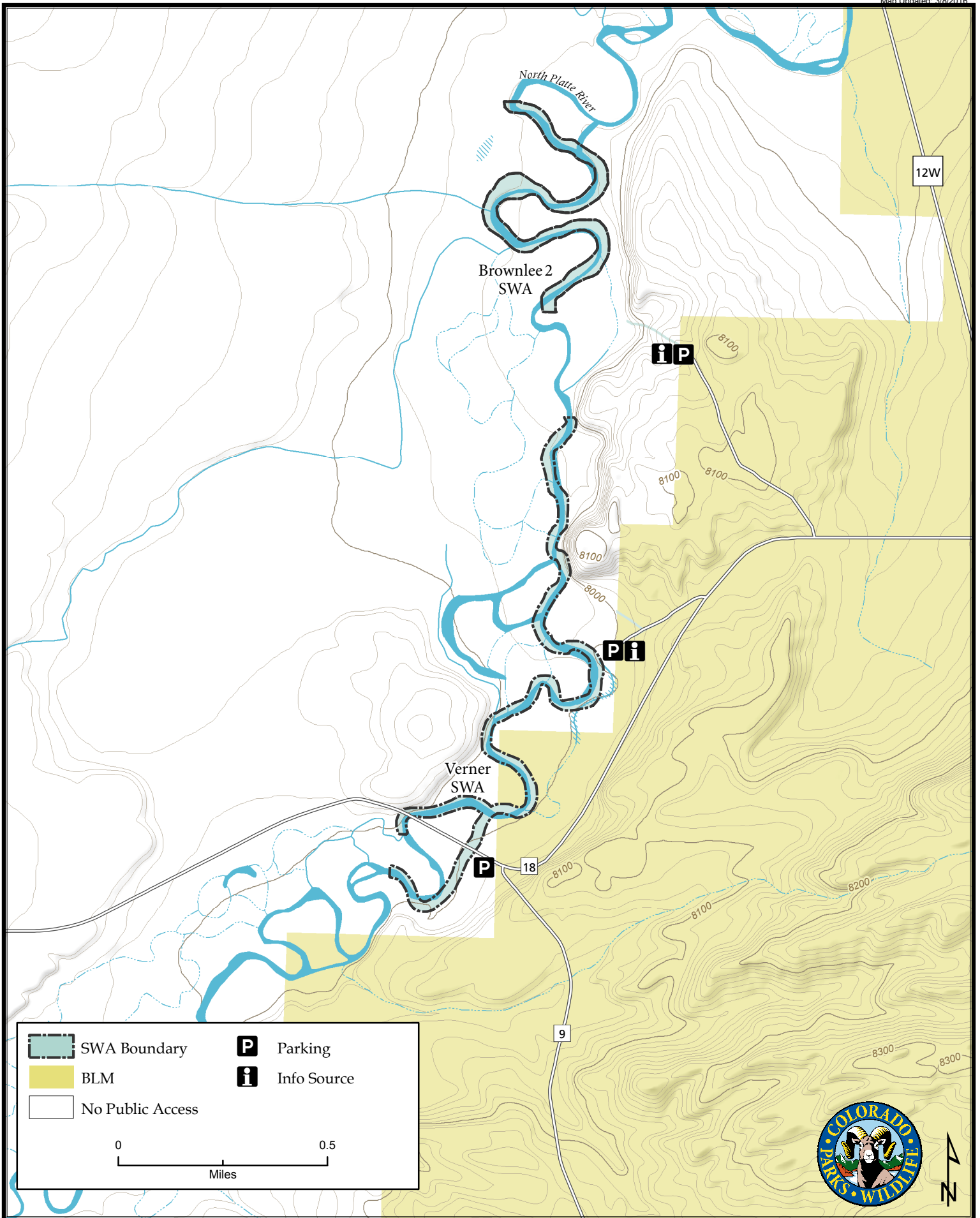
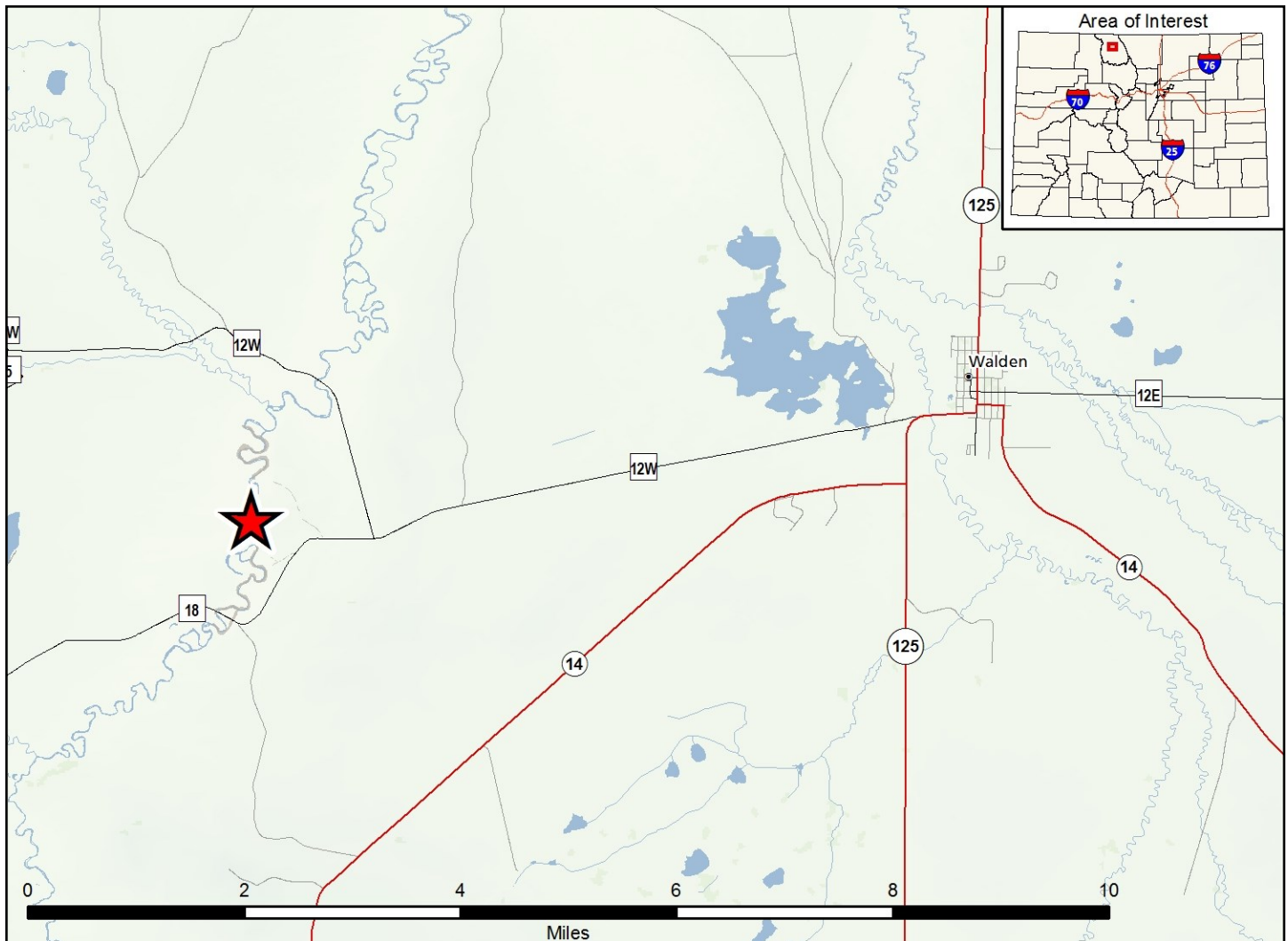


# Brownlee 2 & Verner State Wildlife Areas

Map Updated: 3/8/2016





### Brownlee 2 & Verner SWA - Jackson County

From Walden, go 0.5 of a mile W on Hwy. 14 to CR 12, then go 5.1 miles W to CR 18, then 0.5 of a mile W to access roads.

#### Wildlife Area Offers:

Fishing: Coldwater Stream

#### Regulations:

In addition to or in place of those restrictions listed in regulation #900 the below listed provisions or restrictions apply (see Ch. 9, <http://cpw.state.co.us/aboutus/Pages/Regulations.aspx>).

#### Brownlee 2 SWA

- A. Public access is prohibited, except while fishing.
- B. Discharge of firearms or bows is prohibited.

#### Verner SWA

- A. Public access is prohibited, except while fishing.
- B. Discharge of firearms or bows is prohibited.

#### More Information:

CPW Office (Steamboat): (970) 870-3333

CPW Website: <http://cpw.state.co.us/>