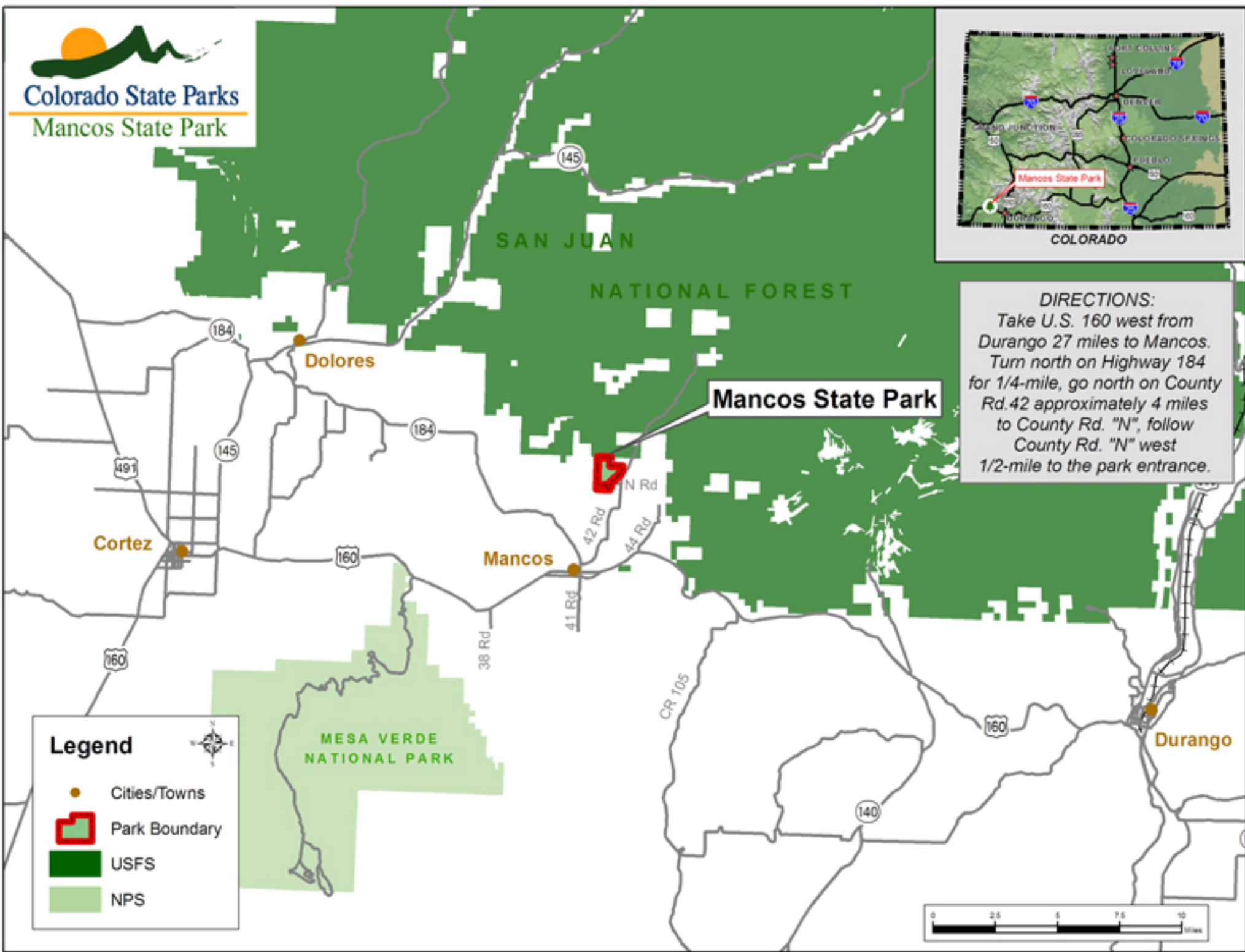




COLORADO

DIRECTIONS:
Take U.S. 160 west from Durango 27 miles to Mancos. Turn north on Highway 184 for 1/4-mile, go north on County Rd.42 approximately 4 miles to County Rd. "N", follow County Rd. "N" west 1/2-mile to the park entrance.



Legend

- Cities/Towns
- Park Boundary
- USFS
- NPS

