



North Sterling State Park

BINGO

Rating: Easy

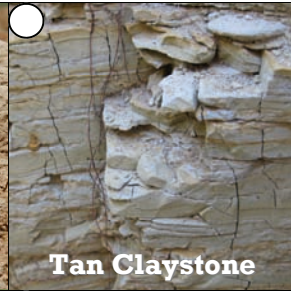
These animals, plants, and other park sights are common, simple to find, or frequently seen or heard on a daily basis - this board is designed for casual play or younger children.

To count for a square, you must **see, hear, find tracks or scat**, or other **evidence** of that species (i.e. a nest, burrow, feather, snake skin, etc.)

Remember, you can borrow free binoculars and field guides from the Visitor Center!



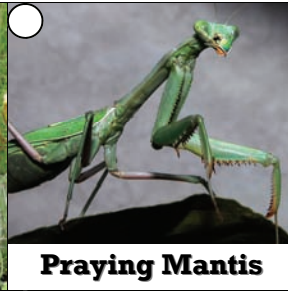
Great Plains Toad



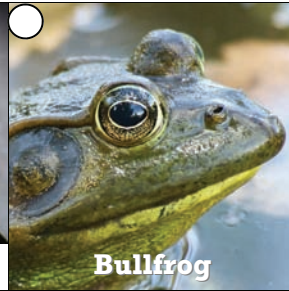
Tan Claystone



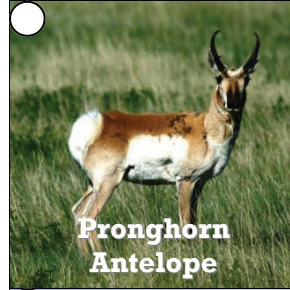
Prickly-Pear Cactus



Praying Mantis



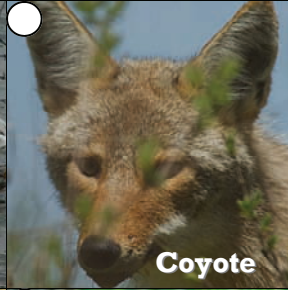
Bullfrog



Pronghorn Antelope



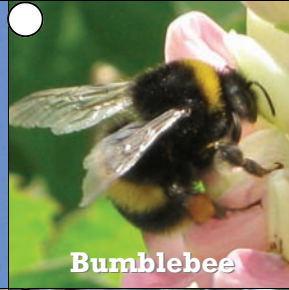
White Pelican



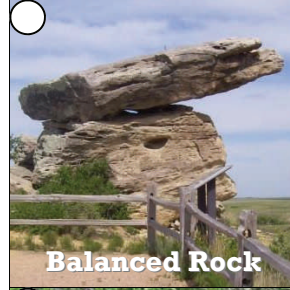
Coyote



Turkey Vulture



Bumblebee



Balanced Rock



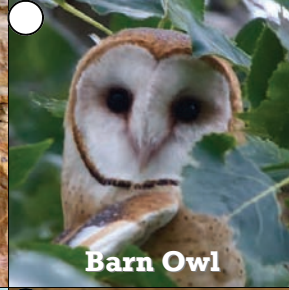
Mule Deer



Cottontail Rabbit



Pink Claystone



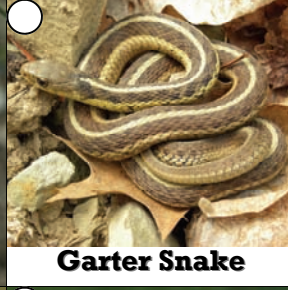
Barn Owl



Yucca Cactus



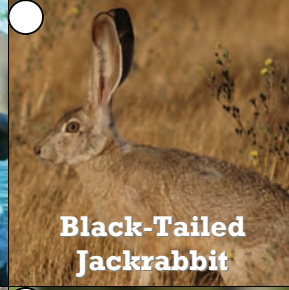
Raccoon



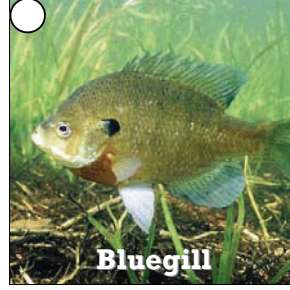
Garter Snake



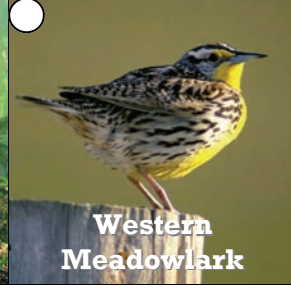
Wiper Bass



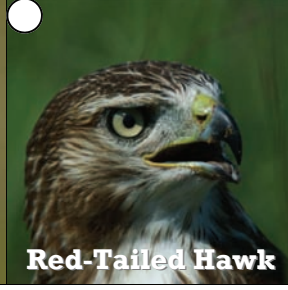
Black-Tailed Jackrabbit



Bluegill



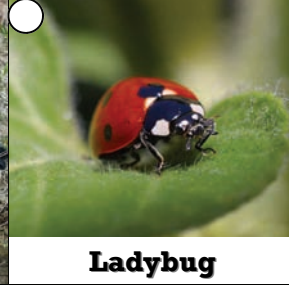
Western Meadowlark



Red-Tailed Hawk



Great Blue Heron



Ladybug