



# North Sterling State Park

## BINGO

### Rating: Moderate

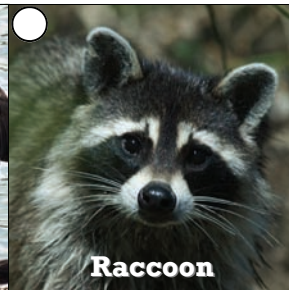
These animals, plants, and other park sights are common, but require more careful observation and maybe some know-how to find and identify. This board is designed for older children and adults.

To count for a square, you must **see, hear, find tracks or scat**, or other **evidence** of that species (i.e. a nest, burrow, feather, snake skin, etc.)

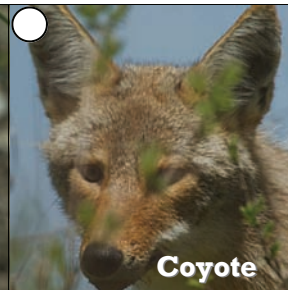
Remember, you can borrow free binoculars and field guides from the Visitor Center!



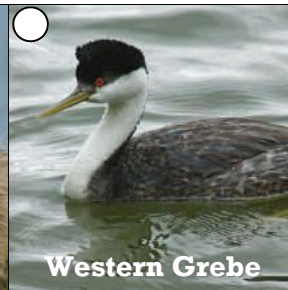
Double-Crested Cormorant



Raccoon



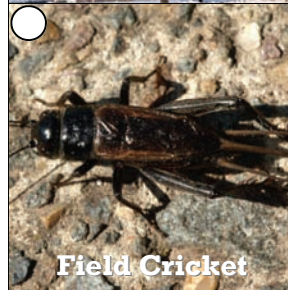
Coyote



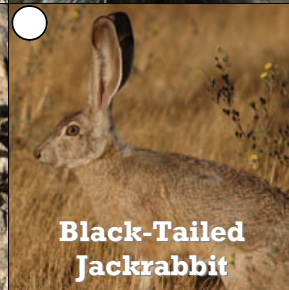
Western Grebe



Wiper Bass



Field Cricket



Black-Tailed Jackrabbit



Mule Deer



Bald Eagle



Banded Garden Spider



Nighthawk



Red-Winged Blackbird



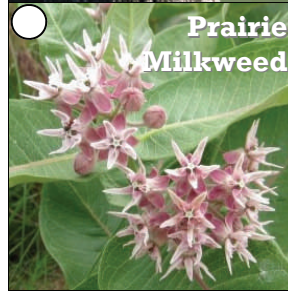
Northern Harrier



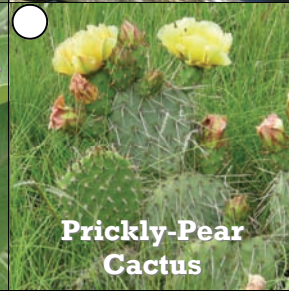
Snow Goose



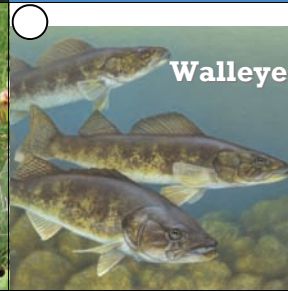
Ord's Kangaroo Rat



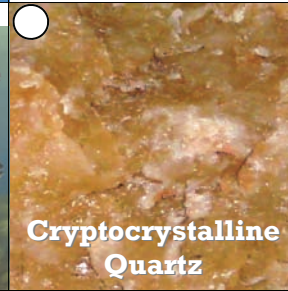
Prairie Milkweed



Prickly-Pear Cactus



Walleye



Cryptocrystalline Quartz



Bull Snake



Dragonfly



Northern Flicker



Great Blue Heron



Bindweed



Pronghorn Antelope