

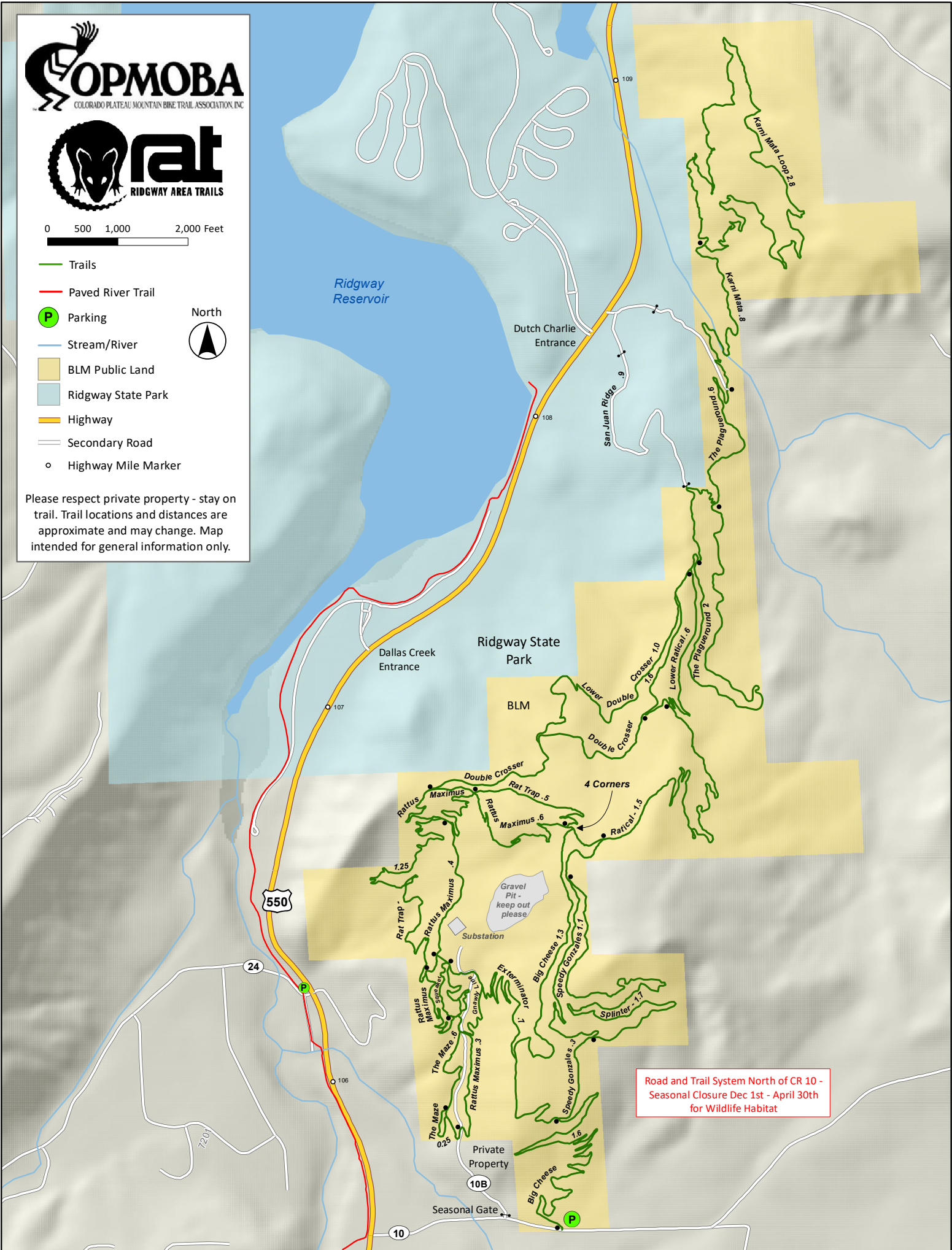


0 500 1,000 2,000 Feet

- Trails
- Paved River Trail
- P Parking
- Stream/River
- BLM Public Land
- Ridgway State Park
- Highway
- Secondary Road
- Highway Mile Marker



Please respect private property - stay on trail. Trail locations and distances are approximate and may change. Map intended for general information only.



Road and Trail System North of CR 10 -
Seasonal Closure Dec 1st - April 30th
for Wildlife Habitat