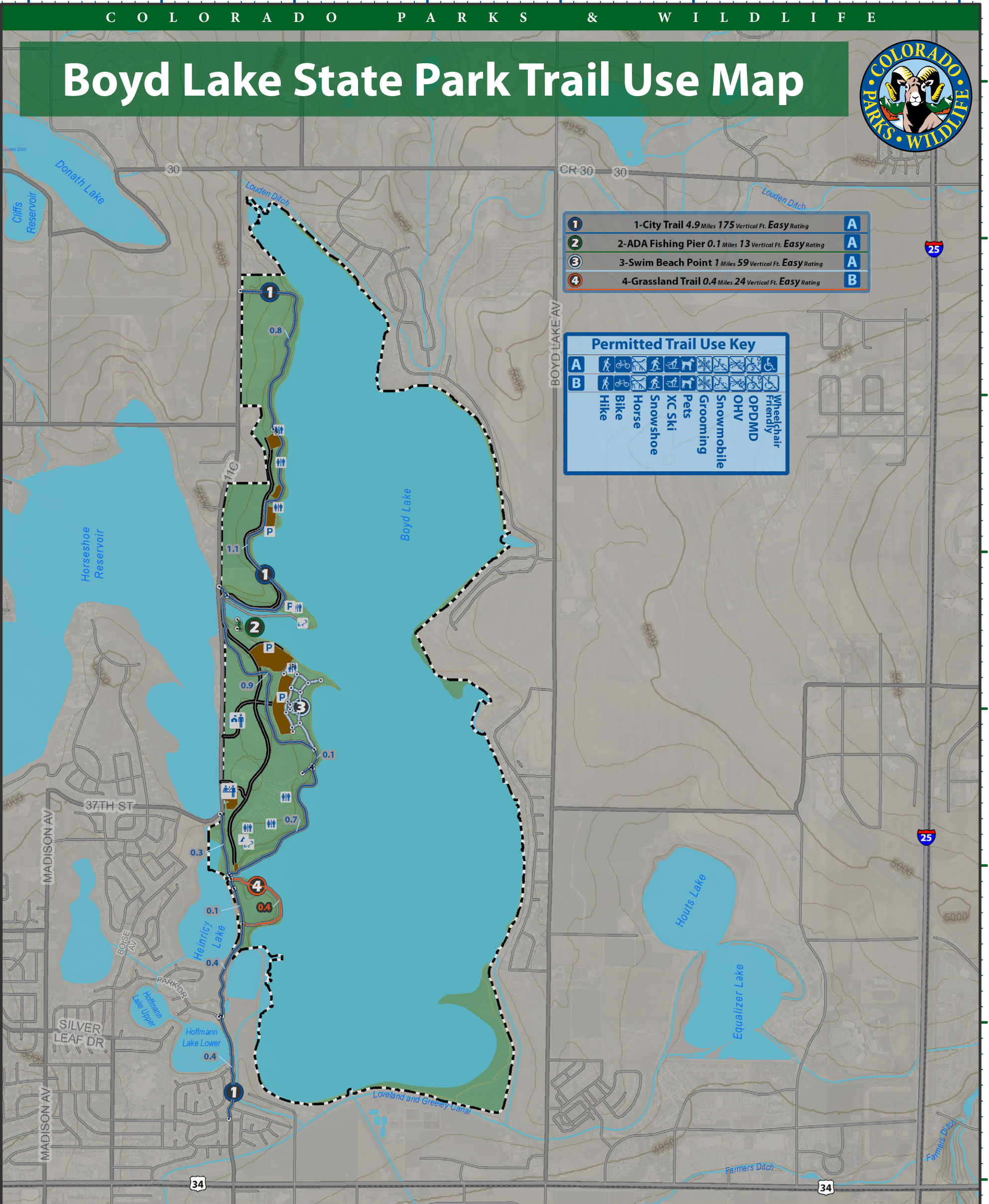




# Boyd Lake State Park Trail Use Map

1	1-City Trail 4.9 Miles 175 Vertical Ft. Easy Rating	A
2	2-ADA Fishing Pier 0.1 Miles 13 Vertical Ft. Easy Rating	A
3	3-Swim Beach Point 1 Miles 59 Vertical Ft. Easy Rating	A
4	4-Grassland Trail 0.4 Miles 24 Vertical Ft. Easy Rating	B

Permitted Trail Use Key	
A	Hike, Bike, Horse, Snowshoe, XC Ski, Pets, Grooming, Snowmobile, OHV, OPDMD, Wheelchair Friendly
B	Hike, Bike, Horse, Snowshoe, XC Ski, Pets, Grooming, Snowmobile, OHV, OPDMD, Wheelchair Friendly



### CPW PocketTrail Map # 16 of 60



Boyd Lake Trail Use Map: BYD\_1of1 showing trails within the Entire Park  
 Last Updated: 9/9/2013 12:40:52 PM  
 Created by the Colorado State Trails Program  
 Email revisions to: Eric.Drummond@state.co.us

### Infrastructure Legend

- Visitor Center (1)
- Entrance station (1)
- Fee Station (0)
- Restroom (8)
- Campground (1)
- Drinking Water (0)
- Historic Site (0)
- Playground (2)
- Parking (4)
- Scenic Overlook (0)
- Wildlife Watching (0)
- Trail Intersections
- CPW Public Roads
- CDOT Highways
- CDOT Major Roads
- CDOT Local Roads
- CPW Service Roads
- Rivers | Diversions
- CPW Parking Lots
- CPW Boundaries

### Cartographic Information

0 0.25 0.5 0.75 1  
 Miles  
 Scale: 1:24,000  
 Declination as of January 2013:  
 8.8214° changing by -0.1349° per year  
 Coordinate System: NAD 1983 UTM Zone 13N

Department of Natural Resources Disclaimer: The Colorado Department of Natural Resources ("DNR") is not responsible and shall not be liable to the user for damages of any kind arising out of the use of data or information provided by DNR, including the installation of the data or information, its use, or the results from its use. ANY DATA OR INFORMATION PROVIDED BY THE DNR IS PROVIDED "AS IS" WITHOUT WARRANTY OF ANY KIND, EITHER EXPRESS OR IMPLIED, INCLUDING, BUT NOT LIMITED TO, THE IMPLIED WARRANTIES OF MERCHANTABILITY AND FITNESS FOR A PARTICULAR PURPOSE. Data or information provided by DNR shall be used and relied upon only at the user's sole risk, and the user agrees to indemnify and hold harmless the DNR, its officials, officers and employees from any liability arising out of the use of the data/information provided.

Download Map as .pdf



[http://bit.ly/BYD\\_1of1](http://bit.ly/BYD_1of1)

Blue GPS Grid = decimal degrees (WGS84)

Green GPS Grid = meters UTM Zone 13 North (NAD 1983)