

# Prosono

We do zero-to-social-  
impact better and faster.

## Parks and Wildlife Commission

Colorado Parks and Wildlife

October 9, 2025



# Table of Contents.

- Strategic Planning Process Overview
- Aligning on Roles
- Methodology
- Summary of Key Themes
- Discussion
- Next Steps



# Strategic Planning Process Overview

# Prosono organizes the approach to strategy development in multi-step process.

There are five main questions that our process serves to answer:



# Aligning on Roles

# Strategic Plan Roles.

## CPW EMT

- Lead planning
- Set priorities and objectives
- Accountable for plan execution

## CPW Staff

- Operationalize the plan
- Execute the plan

## PWC

- Provide feedback on the plan's direction
- Receive updates on the plan's progress
- Plan review and approval

# Discovery Findings

Diagnosis builds alignment on current state to inform the strategic plan.

## Diagnosis Purpose

- Coalesce research and information
- Reflect what CPW has already said and heard
- Identify critical topics

## Moving from Diagnosis to Strategic Planning

- Build alignment on current state of the organization
- Gain clarity on future direction and priorities

# Methodology

# Discovery purpose and sources

## Goals:

- Identify patterns across different perspectives
- Surface themes supported across inputs
- Prioritize accuracy, fairness, and relevance

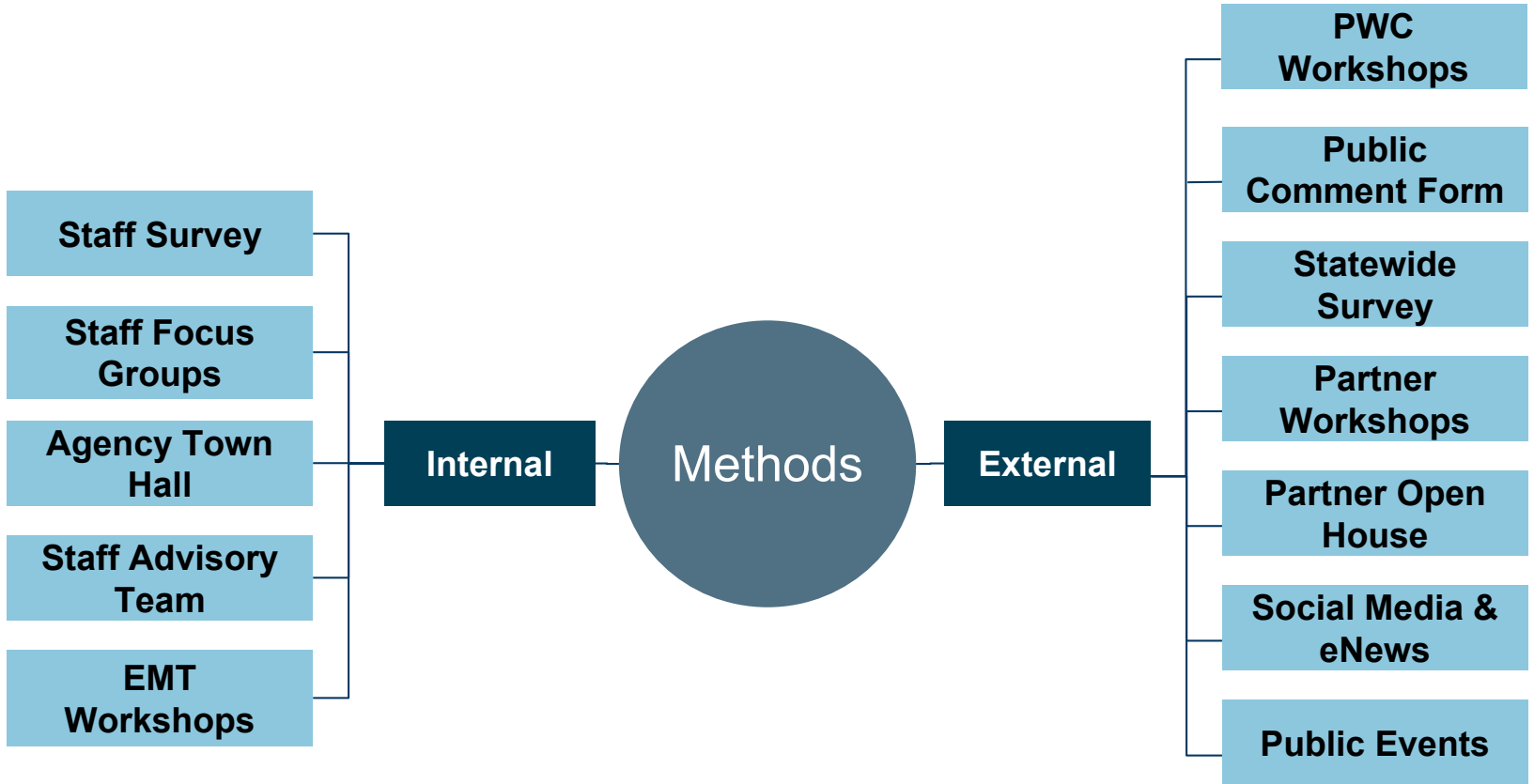
## Inputs:

**Document Review**

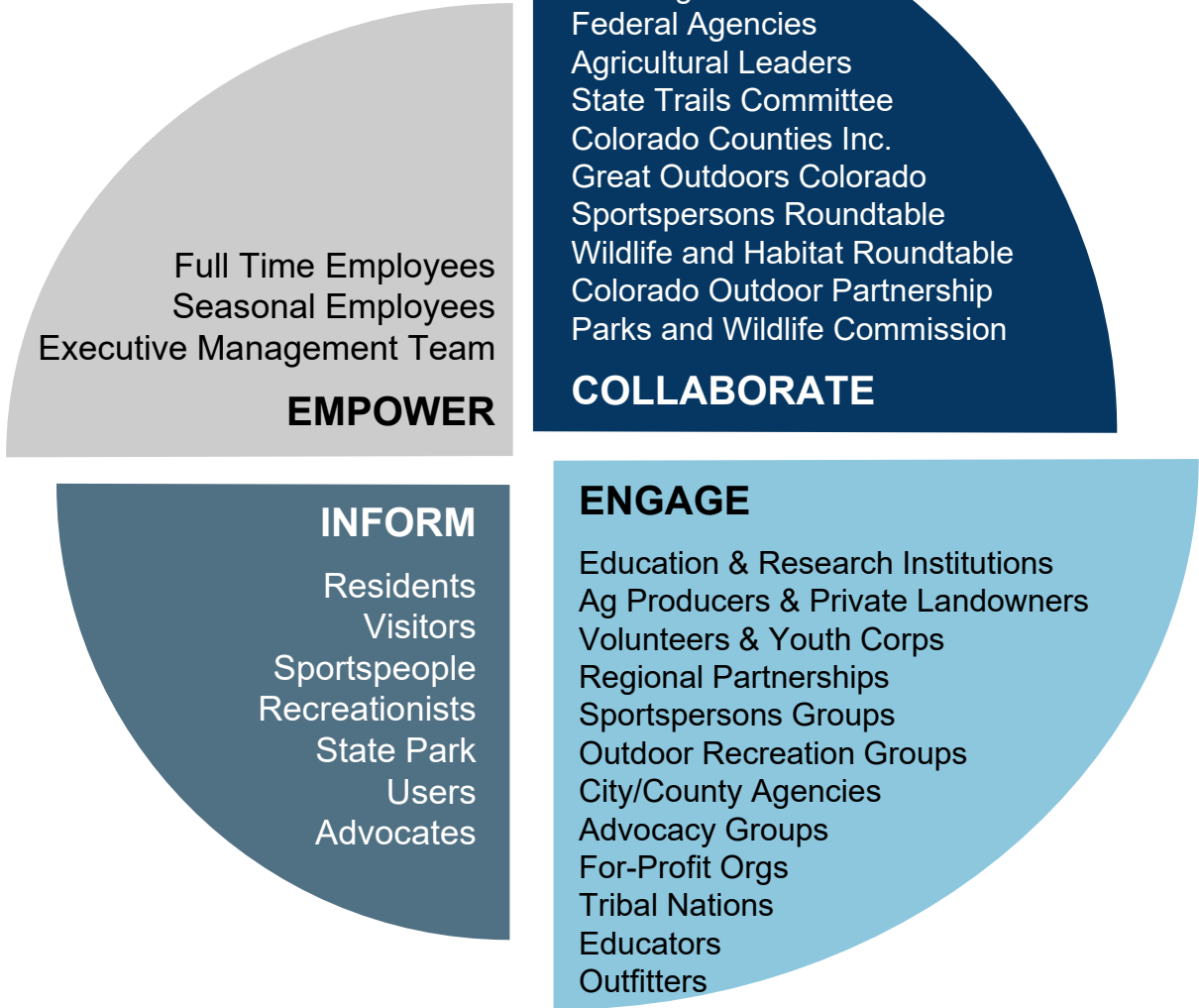
**External Engagement  
Findings**

**Internal Engagement  
Findings**

# Outreach & Engagement Methods



# Outreach & Engagement Audience





# Summary of Themes

# Diagnosis key themes.

Themes	
	Relevancy, Engagement, and Trust
	Living CPW's Mission and Values
	Aligning Conservation, Recreation, and Parks
	Wildlife and Habitat Conservation Leadership
	Decision-Making and Communication
	Strengthening Partnerships for Shared Impact
	Organizational & Workforce Health
	Financial Resilience and Transparency

# Discussion

# Next Steps

# Looking ahead.

