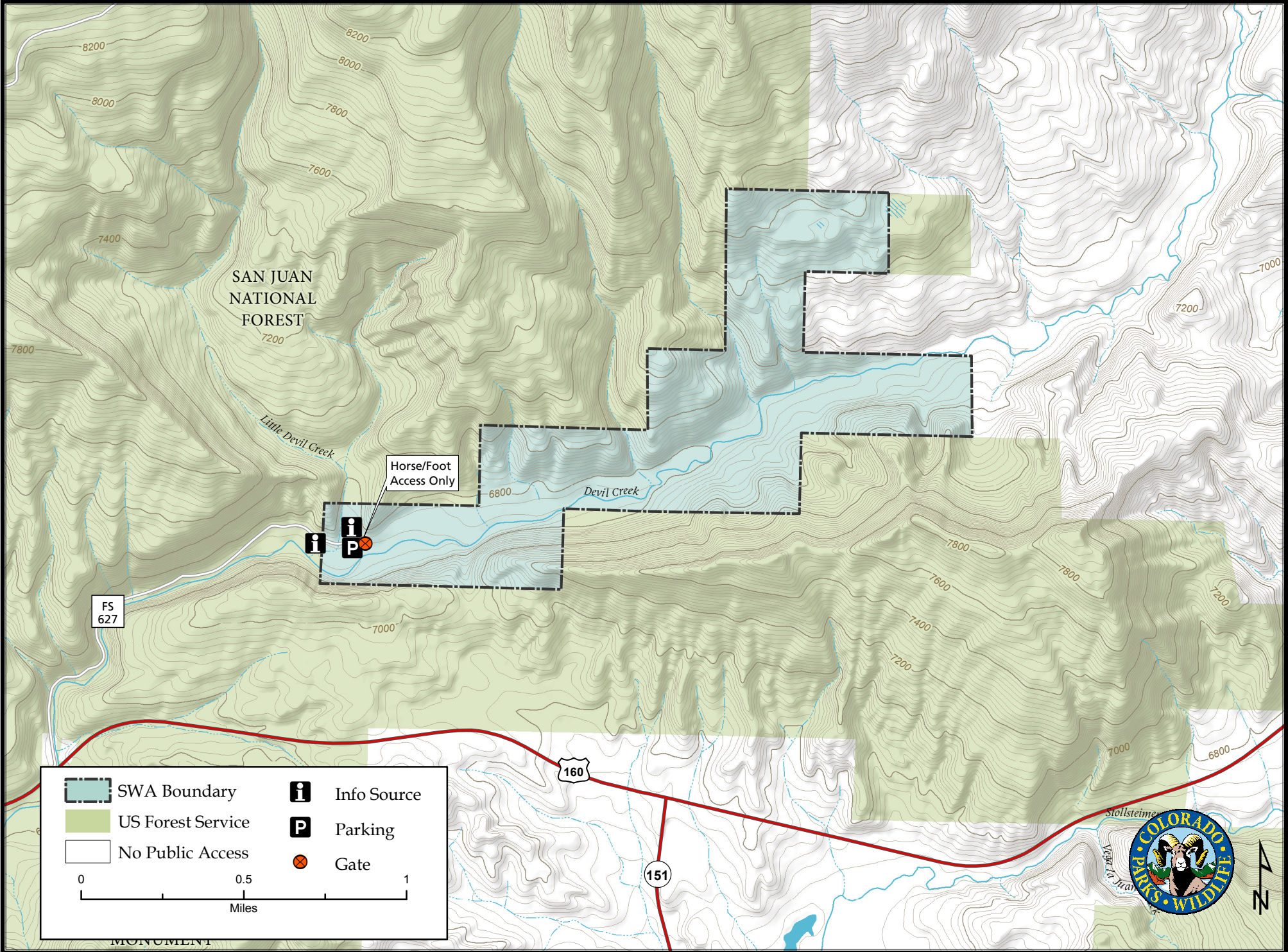
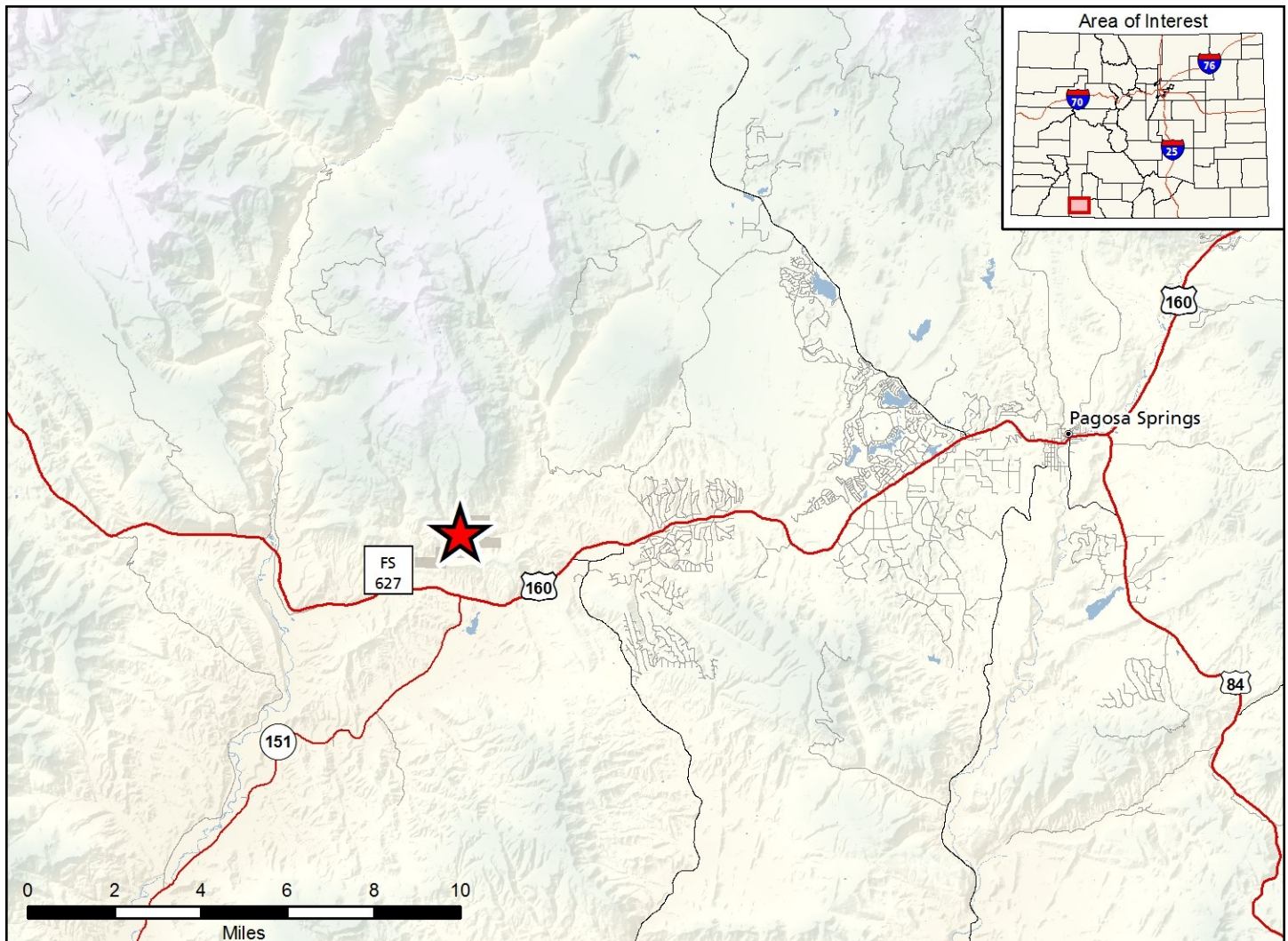


Devil Creek State Wildlife Area

Map Updated: 5/14/2019





Devil Creek SWA - Archuleta County

From Pagosa Springs, go 17 miles west on U.S. 160 to Forest Road 627, then about 1 1/2 miles north (right) to the property. There are no boundary signs or parking areas. Park at the earthen barricade and follow the creek upstream.

Wildlife Area Offers:

Hunting: Deer, elk, rabbit, squirrel, dusky (blue) grouse, turkey, dove

Recreation: Picnicking, Wildlife Viewing

Regulations:

In addition to or in place of those restrictions listed in regulation #900 the below listed provisions or restrictions apply (see Ch. 9, <http://cpw.state.co.us/aboutus/Pages/Regulations.aspx>).

- a. Snowmobile use is prohibited.
- b. Discharge of firearms or bows is prohibited, except while hunting.

More Information:

CPW Office (Durango): (970) 247-0855

CPW Website: <http://cpw.state.co.us/>