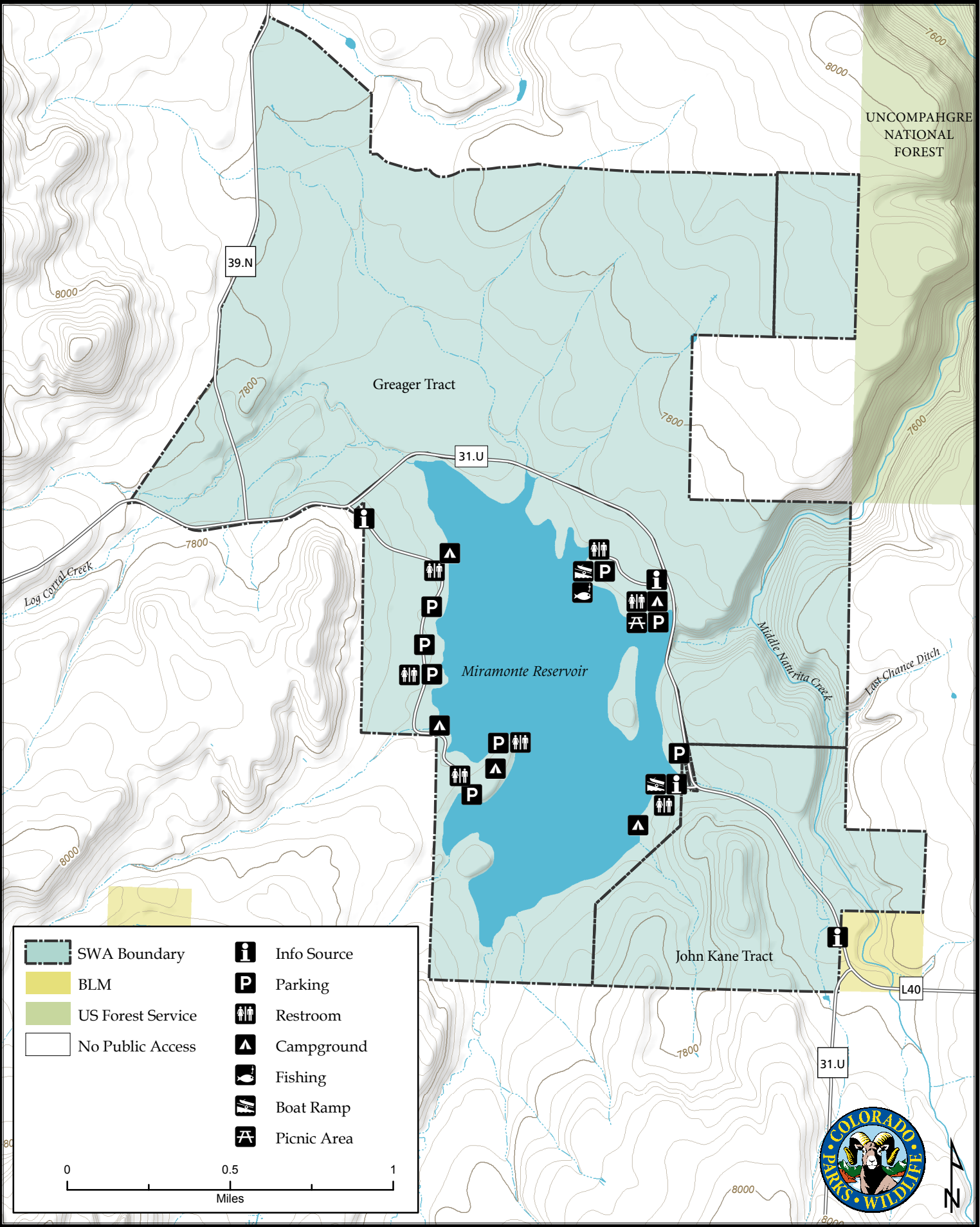
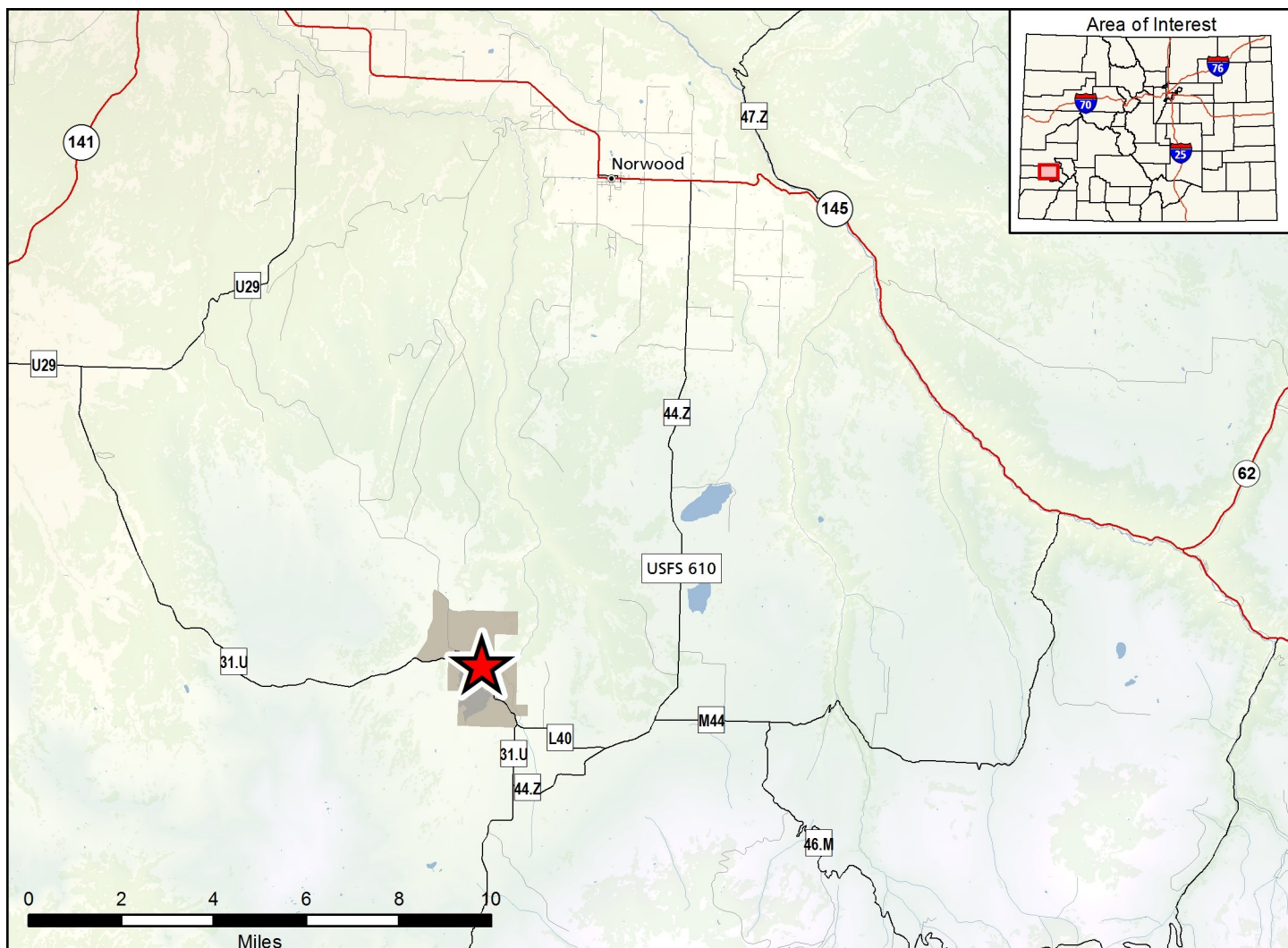


# Dan Noble State Wildlife Area

Map Updated: 7/8/2016





## Dan Noble SWA - San Miguel County

### Wildlife Area Offers:

Hunting: Waterfowl, deer and elk on Greager Tract (GMU 70)

Fishing: Coldwater lake

Recreation: Power Boating, Sail Surfing, Water-Skiing, Camping, Wildlife Viewing

Facilities: Restrooms, Boat Ramps, Shelters

### Regulations:

In addition to or in place of those restrictions listed in regulation #900 the below listed provisions or restrictions apply (see Ch. 9, <http://cpw.state.co.us/aboutus/Pages/Regulations.aspx>).

#### A. Miramonte Reservoir Tract

1. Camping is allowed in designated areas only.
2. Discharge of firearms or bows is prohibited, except while hunting.
3. Launching and use of all vessels is allowed. Trailered vessels must be launched from boat ramps.
4. Waterskiing and personal watercraft (PWC) are allowed in designated areas only on the western half of the reservoir. Waterskiing is allowed from 10:00 a.m. to sunset.

5. Dogs are allowed but must be kept under control on a physical leash by the handler at all times, except as authorized in #900(C)(15).

#### B. Greager Tract

1. Public access is prohibited from March 1 through May 15, except under permit issued by AWM/DWM for viewing purposes.
2. Public access is allowed by foot or horseback only.
3. Viewing site is limited to area selected by Division personnel.
4. Viewing parties will abide by all restrictions and conditions on the permit.
5. Snowmobile use is prohibited.

#### C. John Kane Tract

1. Public access is prohibited from March 1 through May 15.
2. Public access is allowed by foot or horseback only.
3. Snowmobile use is prohibited.

### More Information:

CPW Office (Montrose): (970) 252-6000

CPW Website: <http://cpw.state.co.us/>