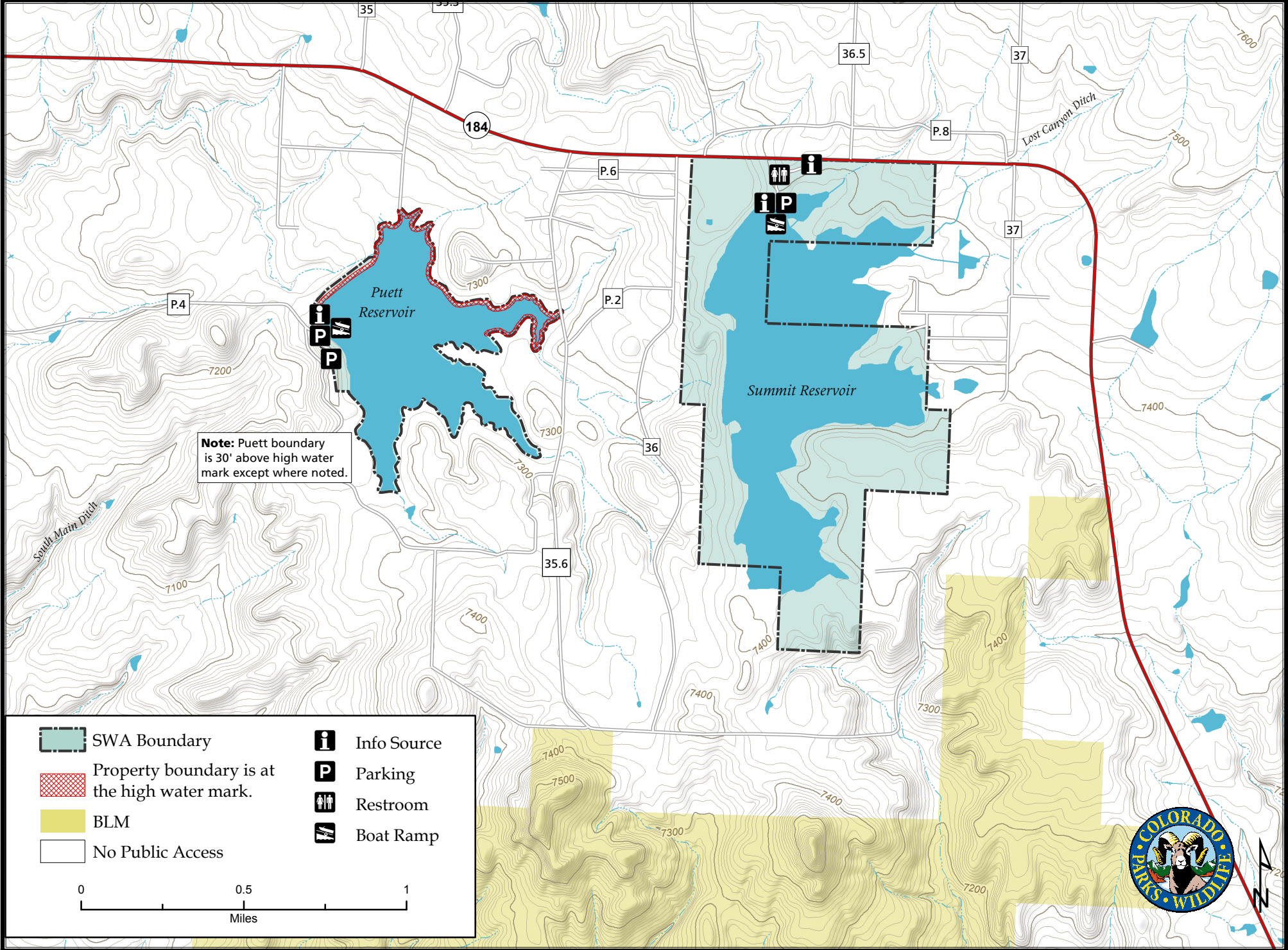










# Puett Reservoir & Summit Reservoir State Wildlife Areas

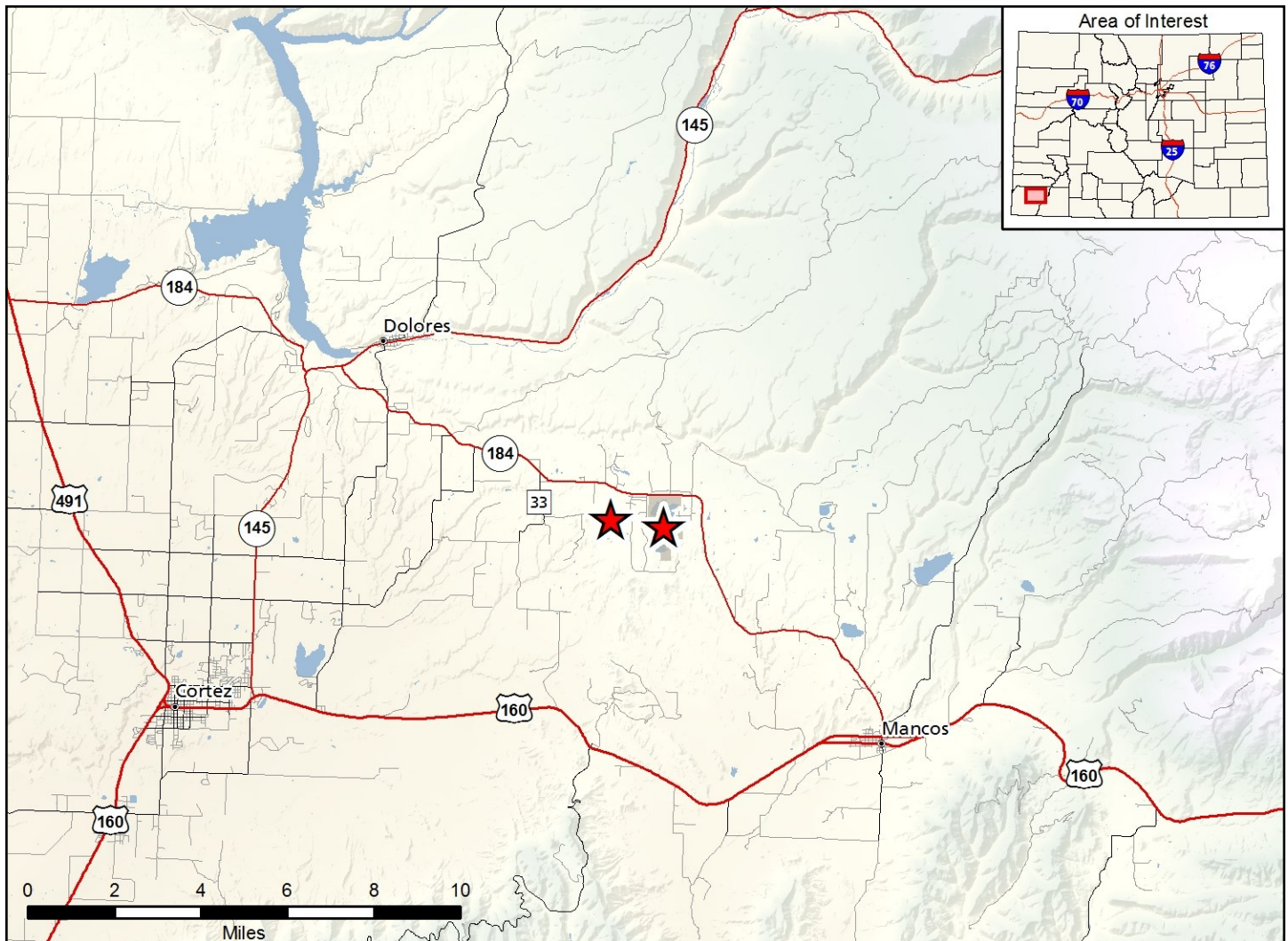
Map Updated: 6/5/2019



**Note:** Puett boundary is 30' above high water mark except where noted.

- |   |  |   |             |
|---|--|---|-------------|
|  | SWA Boundary                                 |  | Info Source |
|  | Property boundary is at the high water mark. |  | Parking     |
|  | BLM  |  | Restroom    |
|  | No Public Access                             |  | Boat Ramp   |





### Puett Reservoir SWA & Summit Reservoir - Montezuma County

**Puett Reservoir SWA:** From Mancos, go 11 miles north and west on Highway 184 to County Road 33, then 1 miles south (left) to road P.4, and then 1 1/2 miles east (left) to access the reservoir.

**Summit Reservoir SWA:** From Mancos, go 9 miles north and west on Highway 184 to the sign at the access road on the left, and then 1 1/4 miles south (left) to the parking area.

#### Wildlife Areas Offers:

Hunting: Waterfowl  
Fishing: Warm water

Recreation: Wildlife Viewing

#### Regulations:

*In addition to or in place of those restrictions listed in regulation #900 the below listed provisions or restrictions apply (see Ch. 9, <http://cpw.state.co.us/aboutus/Pages/Regulations.aspx>).*

#### Puett Reservoir SWA:

- a. Launching and use of vessels may be allowed as posted. Contact the Durango CPW office for current information. When allowed, operating a vessel in a manner that creates a whitewater wake is prohibited.

- b. Dogs are allowed but must be kept under control on a physical leash by the handler at all time, except as authorized in #900(C)(15).

#### Summit Reservoir SWA:

- a. Launching of vessels may be allowed as posted. Contact the Durango CPW office for current information. When allowed, operating a vessel in a manner that creates a whitewater wake is prohibited.
- b. Dogs are allowed but must be kept under control on a physical leash by the handler at all times, except as authorized in #900(C)(15).

#### More Information:

CPW Office (Durango): (970) 247-0855

CPW Website: <http://cpw.state.co.us/>