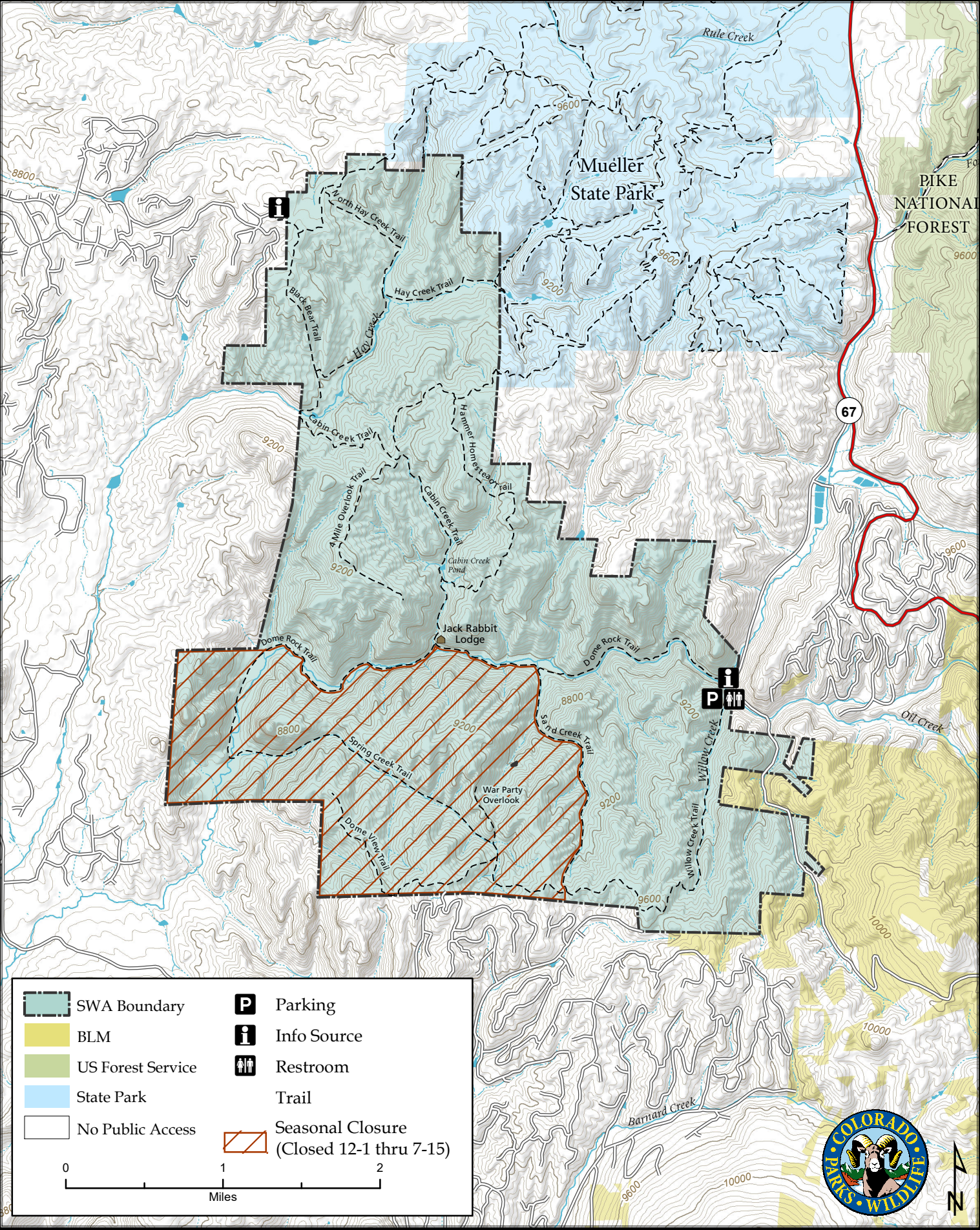
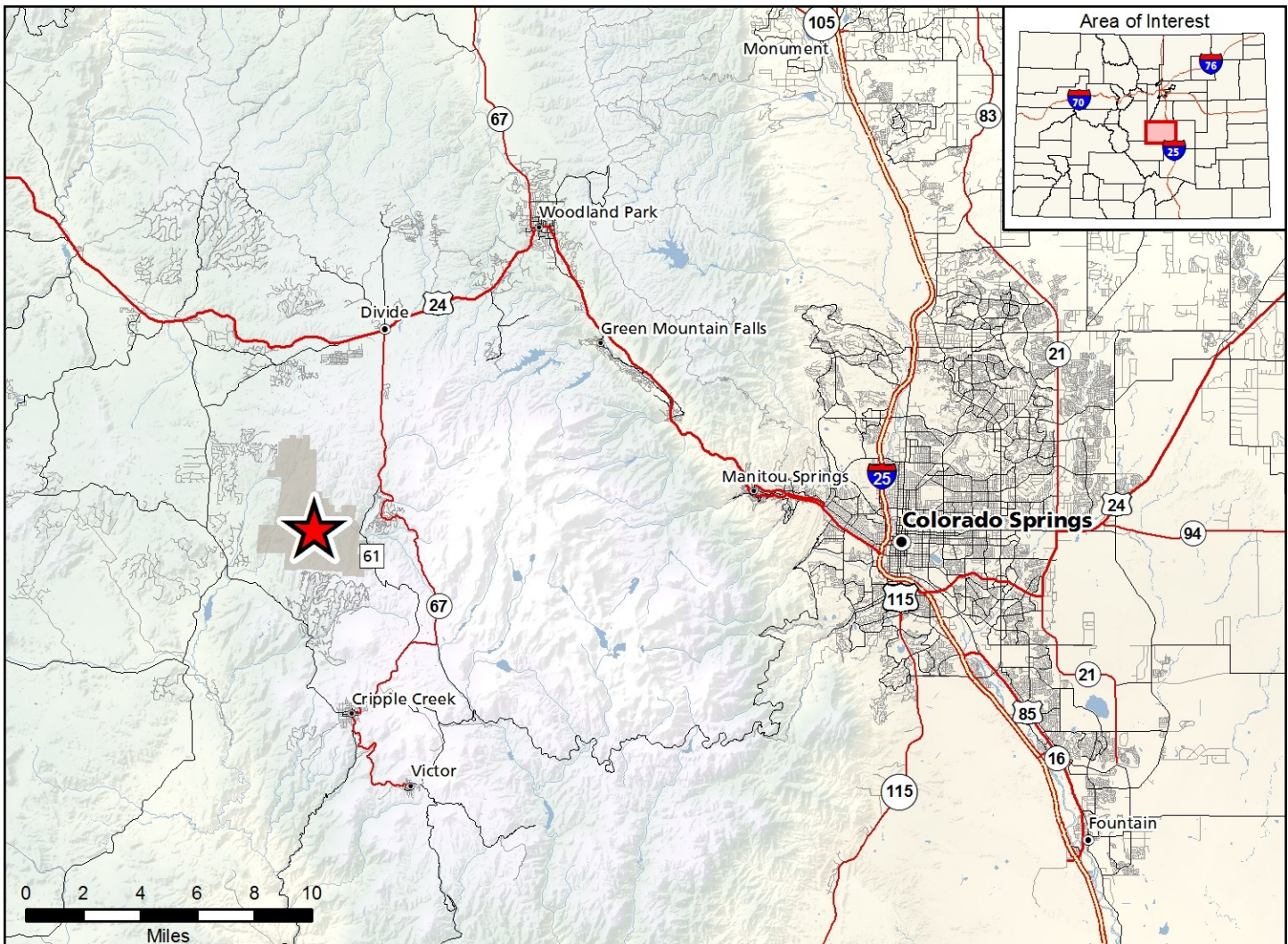


# Dome Rock State Wildlife Area

Map Updated: 7/13/2020







### Dome Rock SWA - Teller County

From Divide, go 5 miles south on Highway 67 to County Road 61 (Rainbow Valley Road), then 2 miles to the parking lot on the right.

#### Wildlife Area Offers:

Hunting: Deer, Elk, Rabbit, Dusky (blue) Grouse.

Fishing: Coldwater Stream

Recreation: Wildlife Viewing, Hiking

- B. Parking and public access is allowed from designated parking lots and connecting trails from Mueller State Park only.
- C. Horse and pack animal use is allowed on designated roads and trails only, except when used as an aid to big game hunting.
- D. Rock climbing is prohibited.
- E. Dogs are prohibited.

#### Regulations:

In addition to those restrictions listed in regulation #900 the below listed provisions or restrictions apply (see Chapter 9, <http://cpw.state.co.us/aboutus/Pages/Regulations.aspx>).

- A. Public access is prohibited from December 1 through July 15 in the area bounded on the east by the Sand Creek Trail, on the north by the Dome Rock Trail, and on the west and south by the property boundaries. The Dome Rock Trail west of the Jack Rabbit Lodge is closed from December 1 through July 15.

#### More Information:

CPW Office (Colorado Springs): (719) 227 - 5200

CPW Website: <http://cpw.state.co.us>