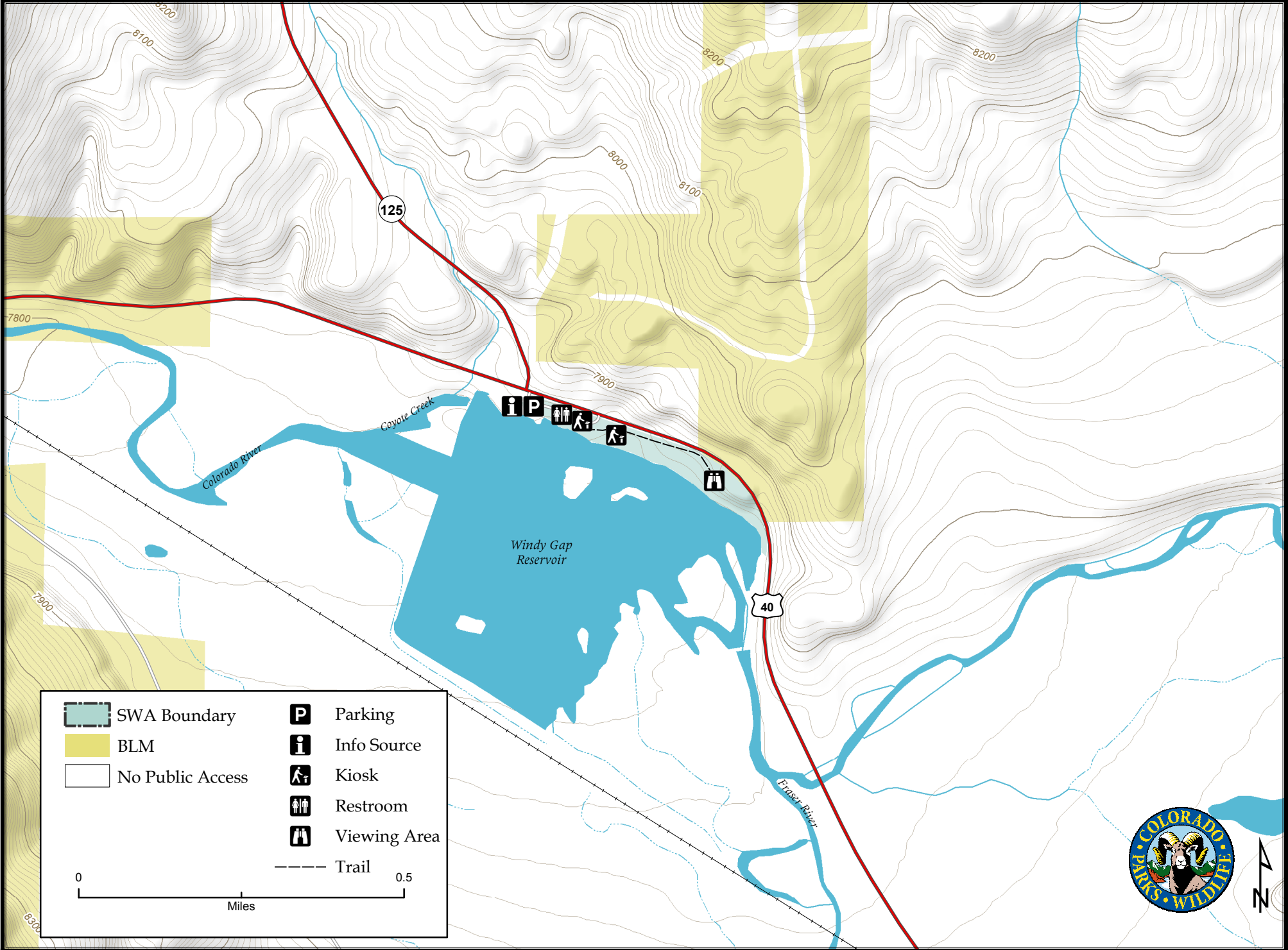


Windy Gap Watchable Wildlife Area

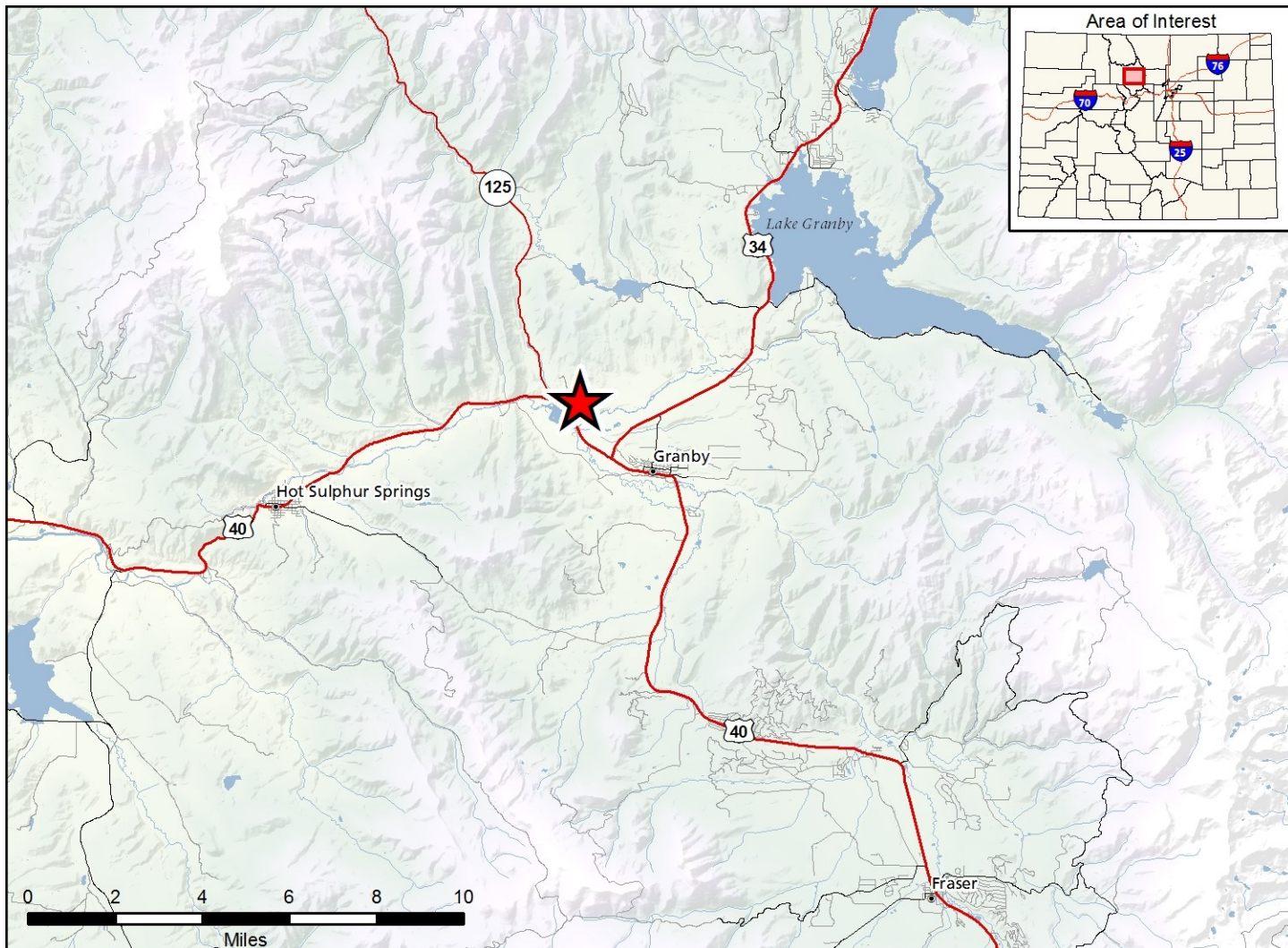
Map Updated: 9/24/2018



	SWA Boundary		Parking
	BLM		Info Source
	No Public Access		Kiosk
			Restroom
			Viewing Area
			Trail

0 0.5
Miles





Windy Gap WWA - Grand County

Area Offers:

Recreation: Picnic Tables, 1/4 mile Interpretive Trail, Toilets

Regulations:

In addition to or in place of those restrictions listed in regulation #900 the below listed provisions or restrictions apply (see Ch. 9, <http://cpw.state.co.us/aboutus/Pages/Regulations.aspx>).

- A. Public access is prohibited outside of the viewing area.
- B. Public access is prohibited from sunset to sunrise.
- C. Discharge of firearms or bows is prohibited.
- D. Hunting is prohibited.
- E. Fishing is prohibited.
- F. Dogs are allowed but must be kept under control on a physical leash by the handler at all times.
- G. Public access to Windy Gap Watchable Wildlife Area is exempt from requirements set forth in section #900(C)1 of these regulations.

More Information:

CPW Office (Sulphur Springs): (970) 725 - 6200

CPW Website: <http://cpw.state.co.us/>