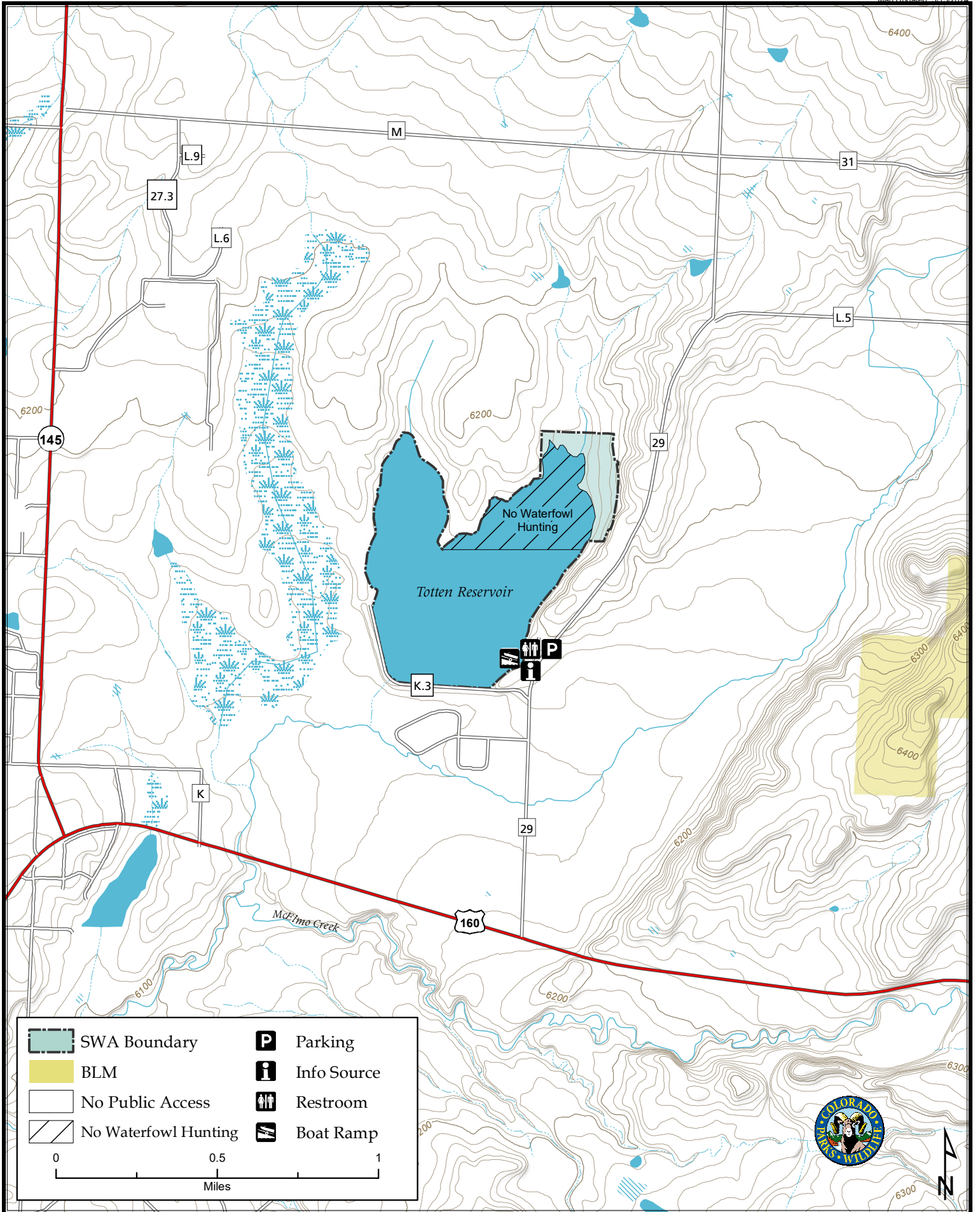


Totten Reservoir State Wildlife Area

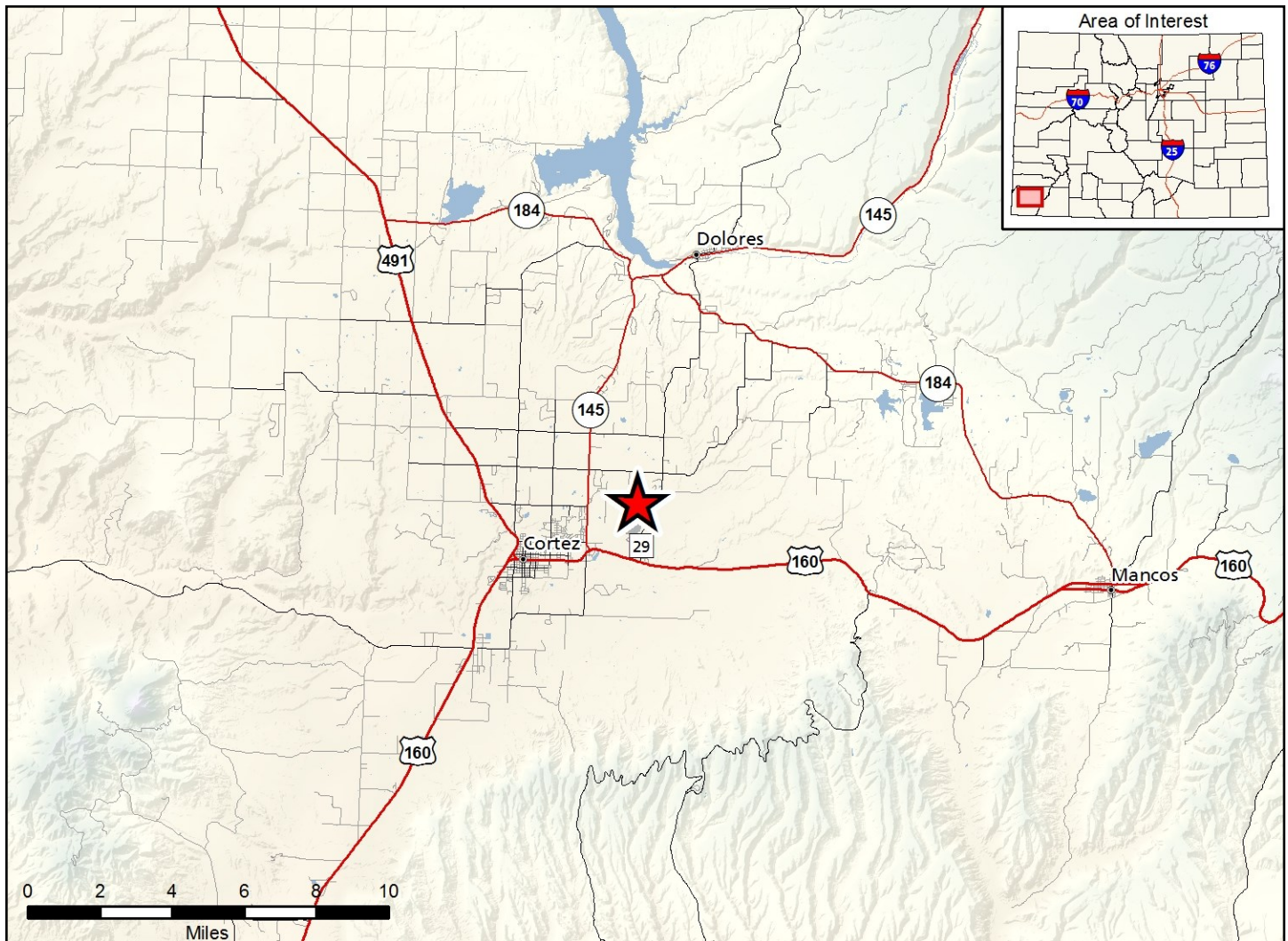
Map Updated: 5/13/2024



| | | | |
|--|----------------------|--|-------------|
| | SWA Boundary | | Parking |
| | BLM | | Info Source |
| | No Public Access | | Restroom |
| | No Waterfowl Hunting | | Boat Ramp |

0 0.5 1
Miles





Totten Reservoir SWA - Montezuma County

From Cortez, go 3 miles east on U.S. 160 to County Road 29, and then 1 mile north (left) to the reservoir.

Wildlife Area Offers:

Hunting: Waterfowl

Fishing: Waterwater lake

Recreation: Wildlife Viewing

mation. When allowed, operating a vessel in a manner that creates a whitewater wake is prohibited.

- f. Dogs are allowed but must be kept under control on a physical leash by the handler at all times, except as authorized in #900(C)(15).
- g. Public access to Totten Reservoir State Wildlife Area is exempt from requirements set forth in section #900(C) 1 of these regulations.

Regulations:

In addition to or in place of those restrictions listed in regulation #900 the below listed provisions or restrictions apply (see Ch. 9, <http://cpw.state.co.us/aboutus/Pages/Regulations.aspx>).

- a. Public access is prohibited along the north shore from March 1 through May 31, as posted
- b. Public access is prohibited from one (1) hour after sunset to one (1) hour before sunrise, except while fishing.
- c. Glass containers are prohibited.
- d. Hunting is prohibited in the inlet area as posted.
- e. Launching and use of vessels may be allowed as posted. Contact the Durango CPW office for current information.

Fishing (Special) Regulations:

- A. The minimum size for largemouth bass is 15 inches in length.

More Information:

CPW Office (Durango): (970) 247-0855

CPW Website: <http://cpw.state.co.us/>

This product is produced and distributed by: Colorado Parks and Wildlife - GIS Group, 317 W. Prospect, Fort Collins, CO 80526. Information depicted hereon is for reference purposes only and is compiled from best available sources. Mapped property boundaries may or may not reflect actual legal holdings. Please observe and respect all marked boundaries and signs on the property. Regulations are subject to change - posted regulations at the individual SWA take precedence over any regulations referred to here. For further information, please see regulations brochures available at CPW offices or cpw.state.co.us.