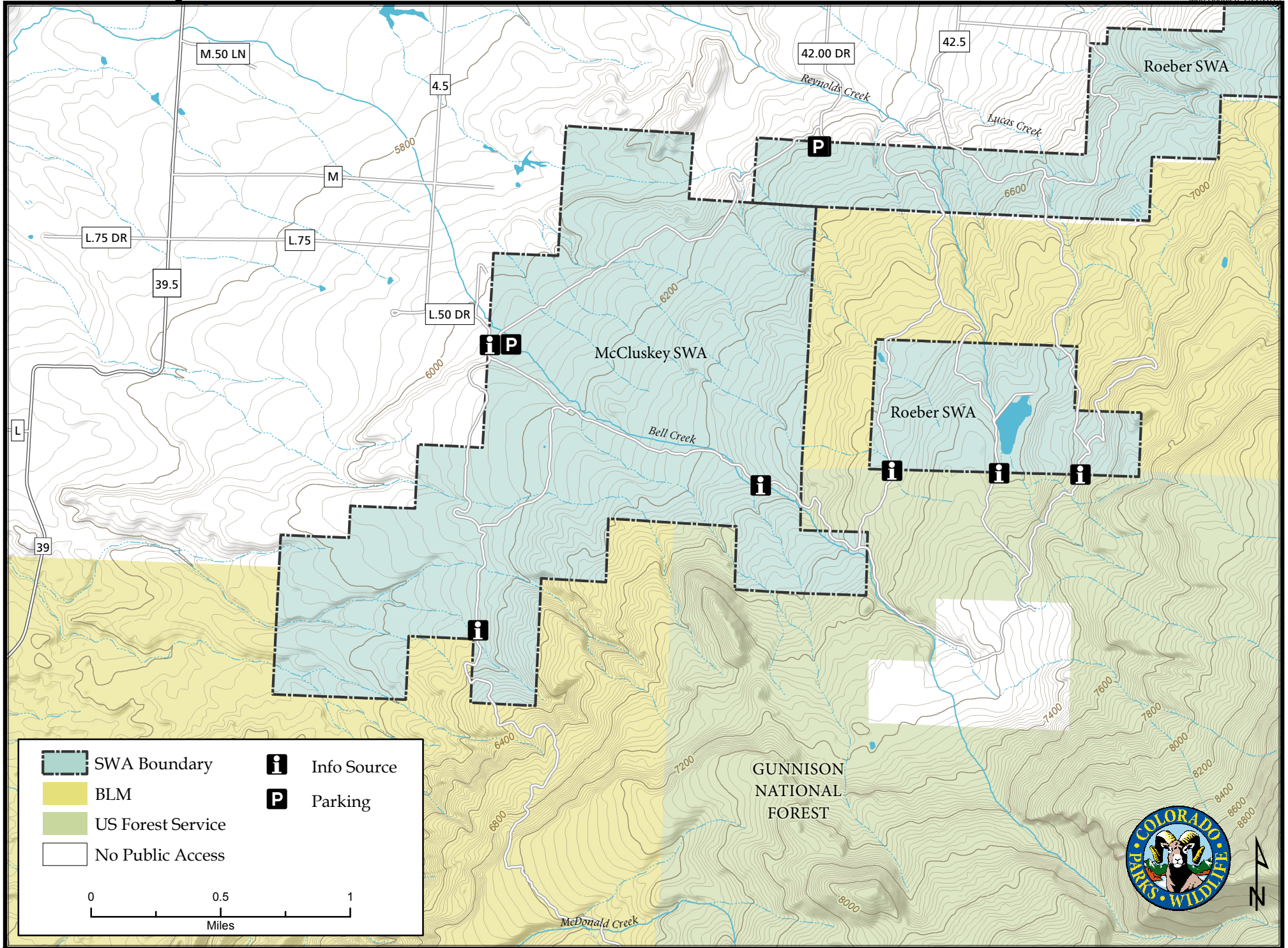
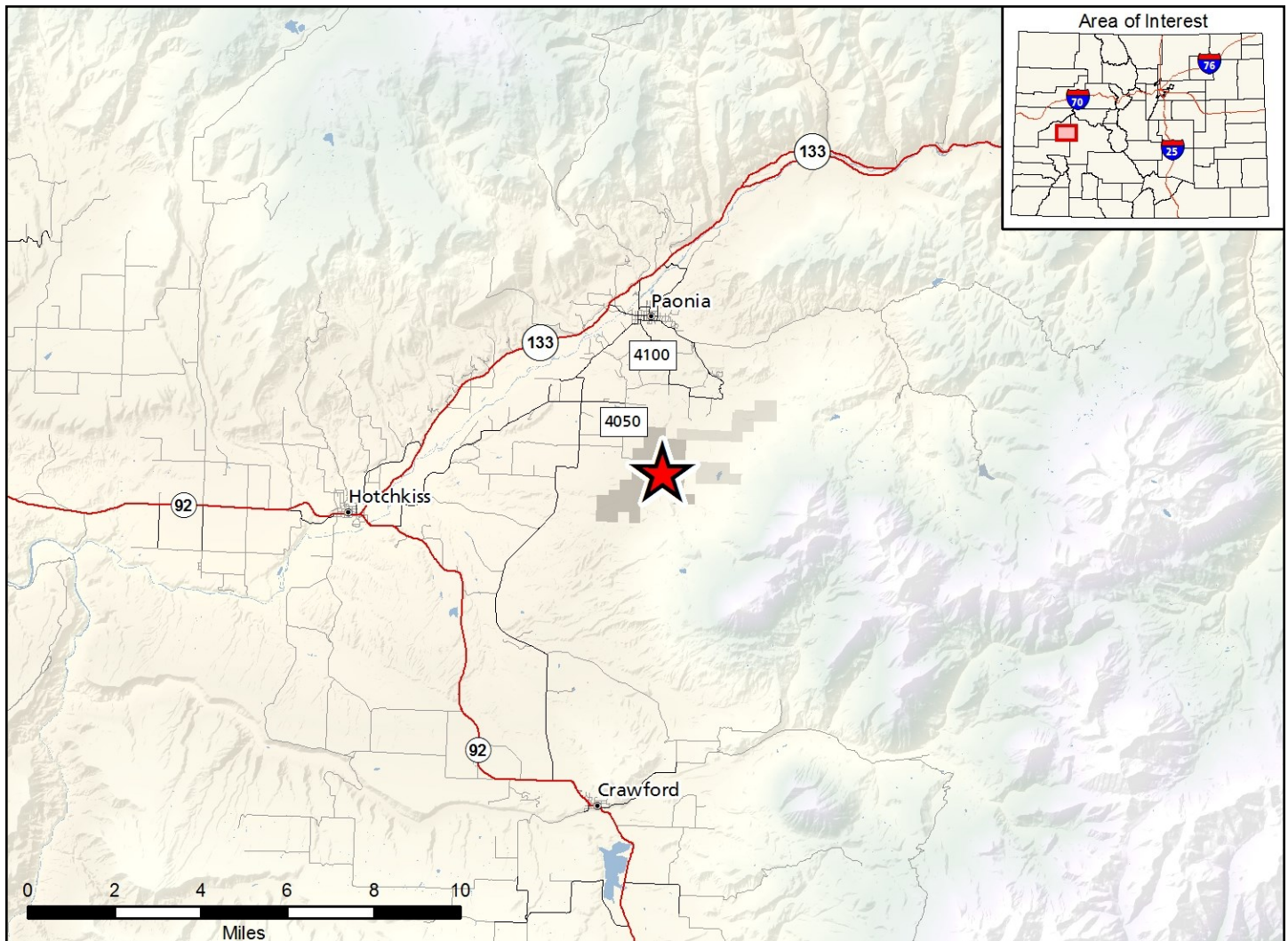


McCluskey State Wildlife Area

Map Updated: 2/22/2019





McCluskey SWA - Delta County

From Paonia's Ornaga Ave, go south on Lamborn Mesa Road (becomes 4100 Road). At stop sign, turn right on Stewart Mesa Road (turns south, becomes 4050 Road). At south end, it forks; turn left on L30 Road to the SWA parking lot.

Wildlife Area Offers:

Hunting: Deer, Elk, Dusky (blue) Grouse, Rabbit

Regulations:

In addition to those restrictions listed in regulation #900 the below listed provisions or restrictions apply (see Chapter 9, <http://cpw.state.co.us/aboutus/Pages/Regulations.aspx>).

- A. Public access is prohibited, except while hunting or trapping.
- B. Public access is prohibited from the day after the conclusion of the annual big game seasons through April 30.
- C. Dogs are prohibited.

More Information:

CPW Office (Gunnison): (970) 641-7060

CPW Website: <http://cpw.state.co.us>