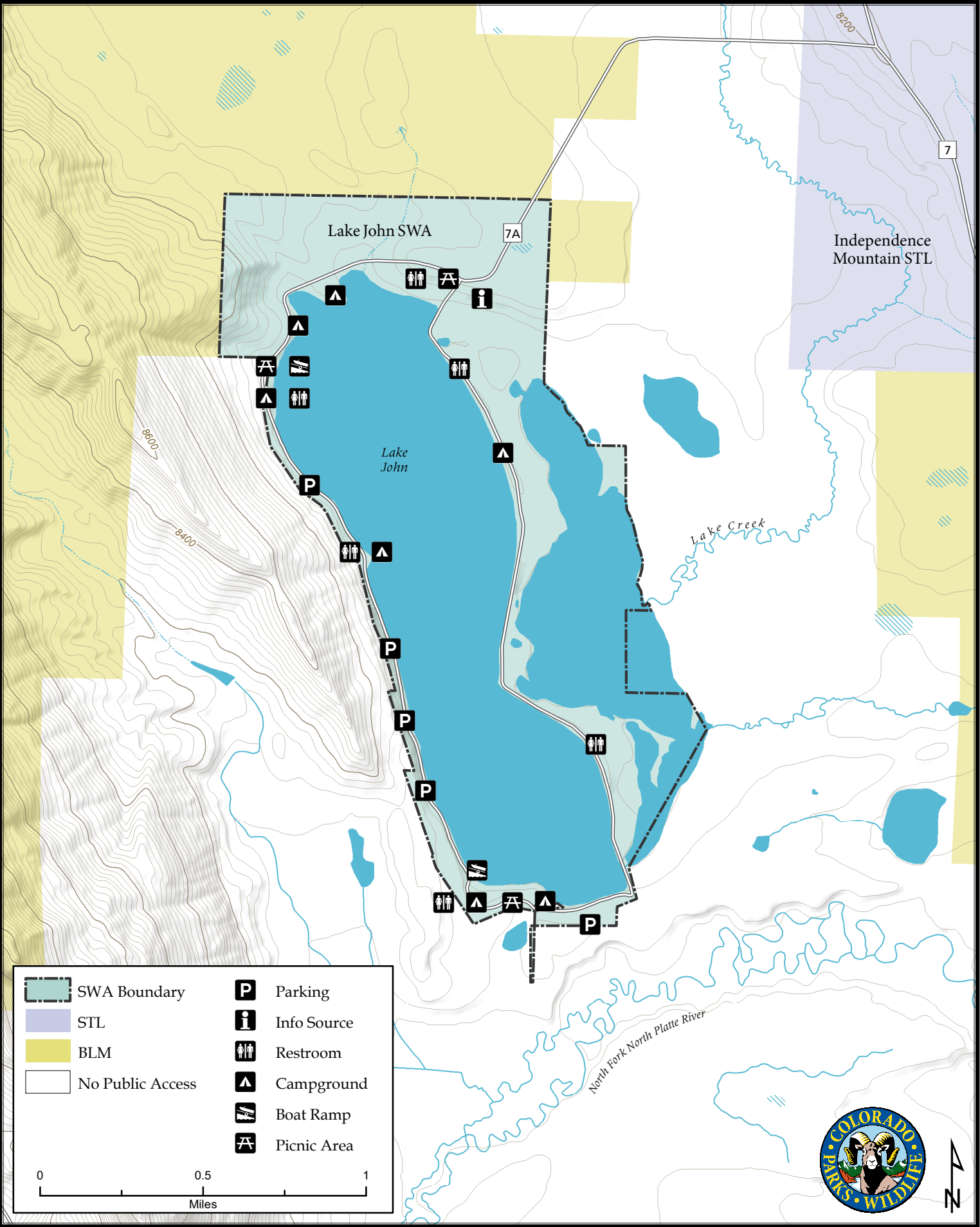
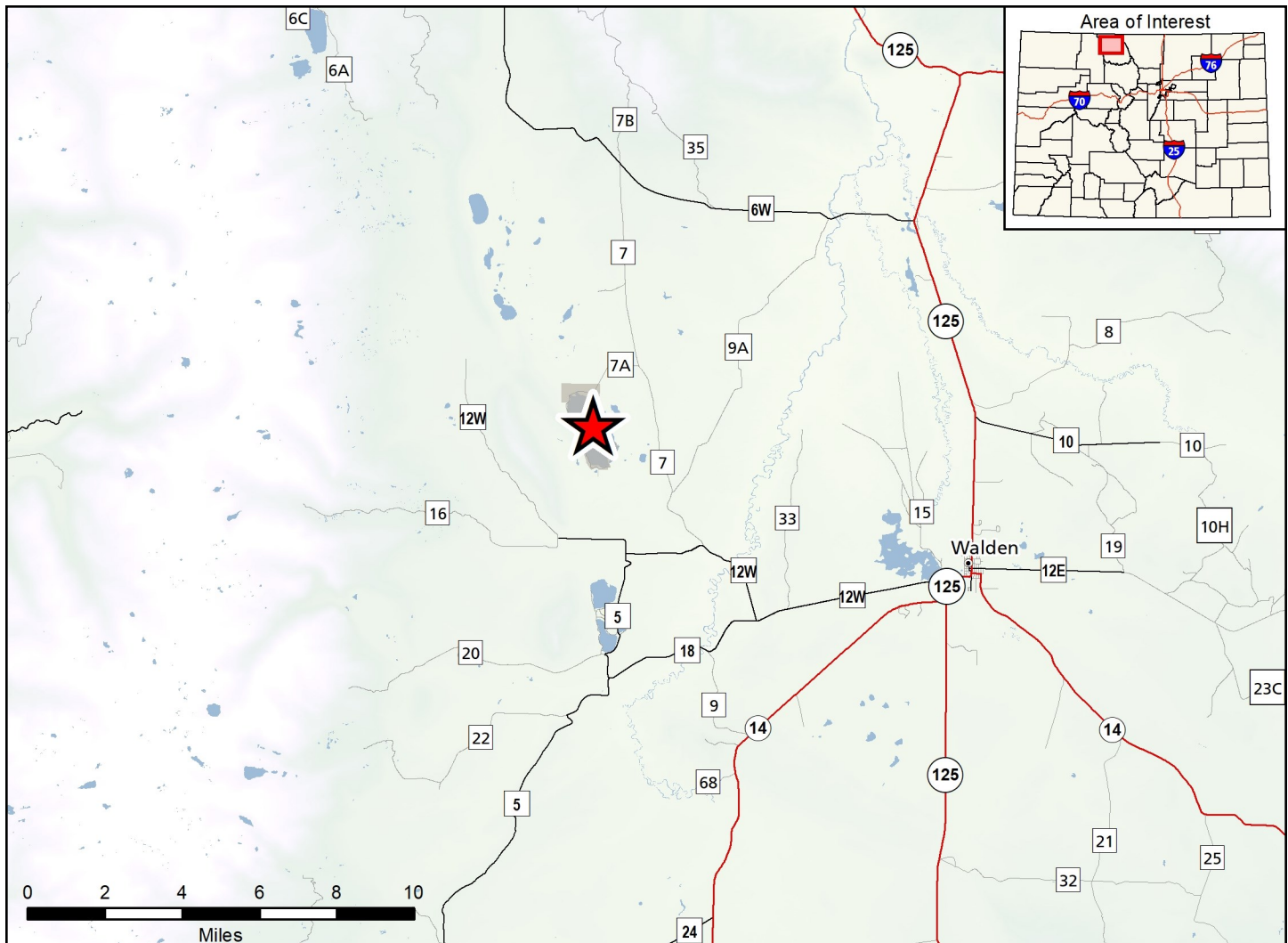


Lake John State Wildlife Areas

Map Updated: 7/8/2024





Lake John SWA - Jackson County

From Walden, go 1/2 mile west on Highway 14 to County Road 12W; then 8 miles west on County Road 12W to County Road 7 and then 7 miles north (right) to the access road, and 2 miles west (left) to the property.

Lake John Wildlife Area Offers:

Fishing:	Coldwater Lake
Hunting:	Big Game, Small Game, Waterfowl
Recreation:	Wildlife Viewing

Regulations:

In addition to or in place of those restrictions listed in regulation #900 the below listed provisions or restrictions apply (see Ch. 9, <http://cpw.state.co.us/aboutus/Pages/Regulations.aspx>).

- A. Discharge of firearms or bows is prohibited, except while hunting.
- B. Camping is allowed west of Lake John Dam.
- C. Fires are allowed within an established containment structure in designated areas.
- D. Dogs are allowed but must be kept under control on a physical leash by the handler at all time except as authorized in #900(C)(15).

More Information:

CPW Office (Steamboat Springs): (970) 870-3333

CPW Website: <http://cpw.state.co.us/>