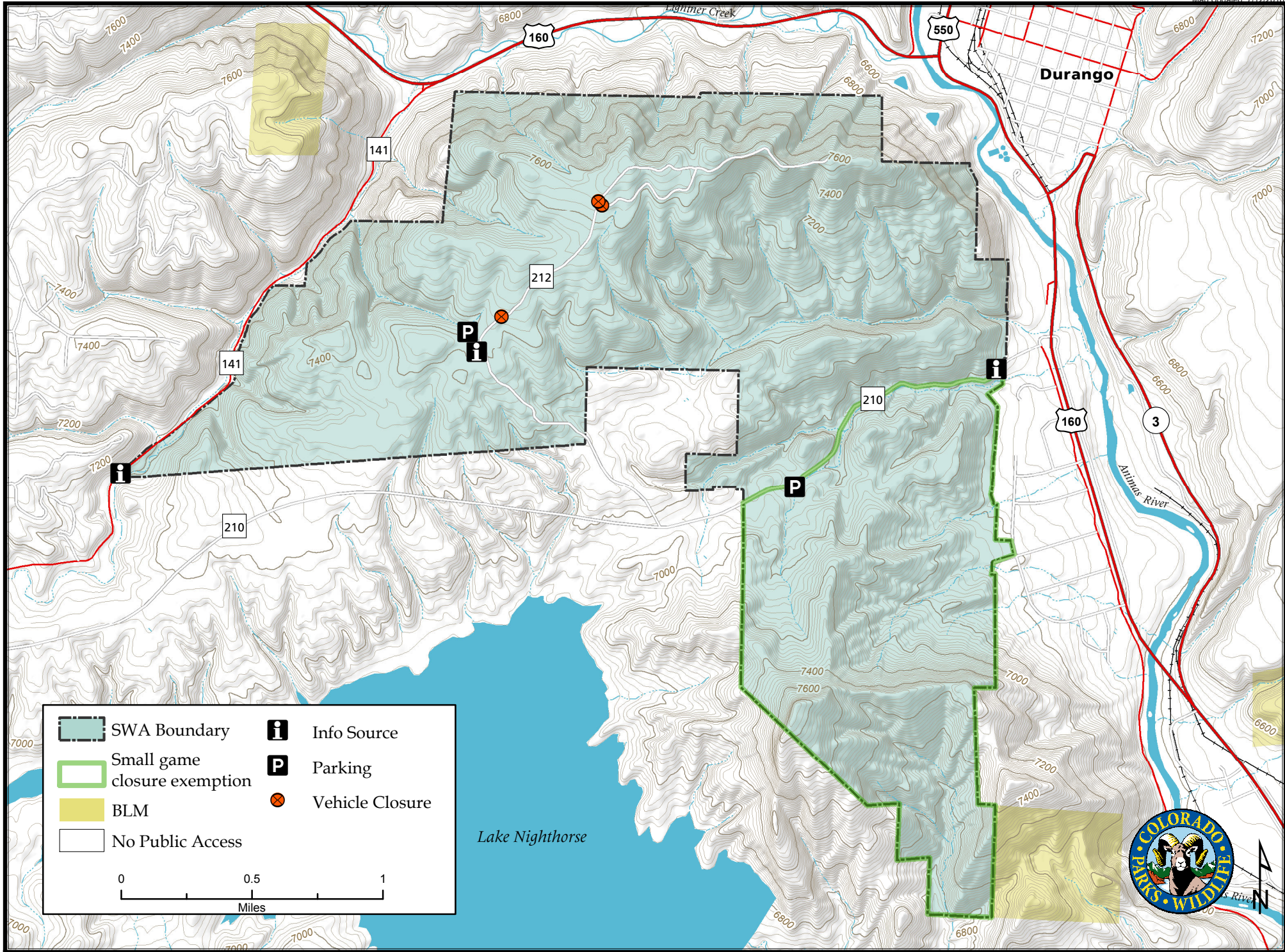
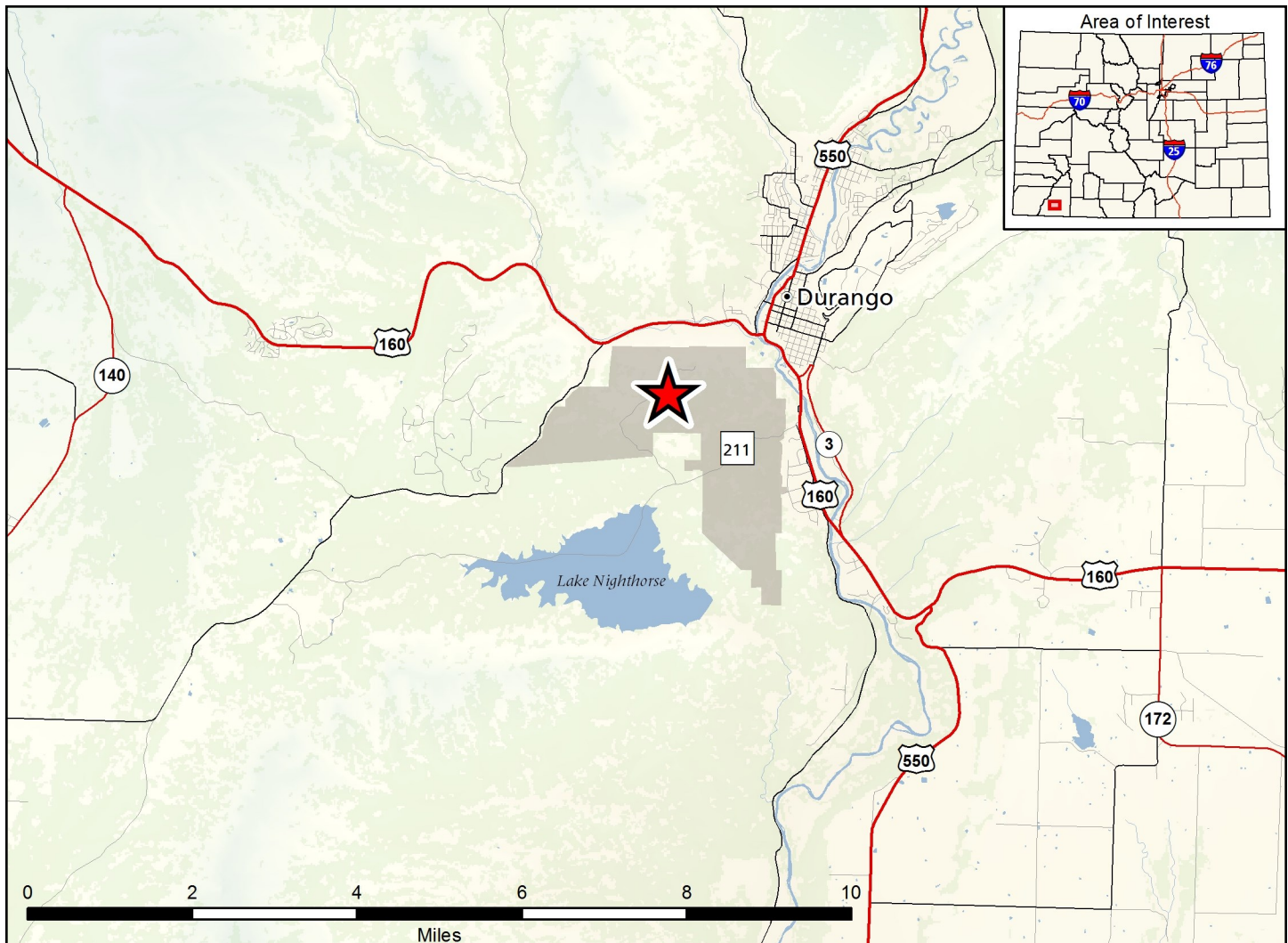


Bodo State Wildlife Area

Map Updated: 7/12/2016





Bodo SWA - La Plata County

From Durango, go 1 mile south on U.S. 160 to County Road 211, then 1/4 miles west (right) to the sign marking the eastern boundary of the SWA. County Road 211 runs west through the middle of the property.

Wildlife Area Offers:

Hunting: Deer, elk, rabbit, dusky (blue) grouse, (GMU 741) turkey, dove

Recreation: Picnicking, Hiking, Wildlife Viewing

Regulations:

In addition to or in place of those restrictions listed in regulation #900 the below listed provisions or restrictions apply (see Ch. 9, <http://cpw.state.co.us/aboutus/Pages/Regulations.aspx>).

- a. Public access is prohibited from December 1 through April 30, except that:
 1. Small game hunting is allowed south of CR 210.
 2. Public access to the Smelter Mountain Trail is allowed by foot only from 10:00 a.m. - 2:00 p.m.
- b. Discharge of firearms or bows is prohibited, except while hunting.
- c. Launching of paragliders is allowed from the Smelter Mountain Trail, subject to the restrictions listed in a.2 above.
- d. Dogs are allowed from May 1 through September 30 but must be kept under control on a physical leash by the handler at all times, except as authorized in #900(C)(15).
- e. Dogs are allowed pursuant to #900(C)(15) from October 1 through November 30.

More Information:

CPW Office (Durango): (970) 247-0855

CPW Website: <https://cpw.state.co.us/>